



ST JOHN'S & ST MARTIN'S

PARISH CHURCHES

*Church Magazine*  
*November 2024*

*You're warmly welcome  
to our churches.*



## Building & Renovation Company

Quality building and carpentry work

Bespoke joinery

Painting and Decorating

Capel: 01293 871008

Email: info@lyneandco.co.uk

View examples of our building and joinery work at:

[www.lyneandco.co.uk](http://www.lyneandco.co.uk)



## MJP Plumbing & Heating Ltd

Will do any job from a tap washer to refitting your bathroom.

Boiler repairs and servicing.

Gas safe registered.

Contact Mike on 07768 844276  
or [mike@mjpplumbing.com](mailto:mike@mjpplumbing.com)

I'm local  
No callout fee

### Mac or PC Problem?

- Computer repairs
- Virus removal
- Network & Broadband
- Performance improvement
- Affordable websites
- Purchase advice

All explained in plain English  
Drop off or I can come to you

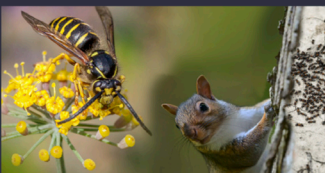
## Surrey Hills PC

T: 01306 400121 [www.surreyhillspc.co.uk](http://www.surreyhillspc.co.uk)  
M: 07771 665 863 [david@surreyhillspc.co.uk](mailto:david@surreyhillspc.co.uk)

## SOLVING PEST PROBLEMS OTHERS CAN'T - Since 2008

*From Gomshall*

ALL PESTS: Rats, mice, squirrels, wasps, woodworm, rabbits, deer fencing, loft insulation clearance



Surrey's highest rated pest control service on



- Ants 2 visits £172 +VAT
- Moles min 2 visits £60 +VAT per visit
- Rodents 3 visits £125 +VAT per visit
- Wasps £99 + Vat Guaranteed for the season

\*quote "Wondersh" for these prices

**For Homes & Businesses**

[www.pghbeegone.co.uk](http://www.pghbeegone.co.uk)

[sales@pghbeegone.co.uk](mailto:sales@pghbeegone.co.uk)

**01483 273 478**



**PGH**  
PEST PREVENTION

Hivegrove, Kings Court, Burrows Ln, Gomshall, GU5 9QE

PETER HIGGS

Visit our  
website



Proud members of  
**Checkatrade.com**  
Where reputation matters

**Beegone**  
LIVE BEE REMOVAL

Inclusion of an advertisement in this magazine does not imply that the Church endorses, or takes responsibility for, any product or service provided.



## November 2024

### Vicar's letter . . .

Dear Friends,

As we prepare to remember those who have fallen in war and conflict, we are alarmed that turmoil persists in various parts of the world. Humanity seems to long for power and control, seeking more for ourselves. We want security and comfort, so often without thinking of the cost to others. This cost we see on our television screens day by day. It looks as though the world is out of control.

One day, the disciples were talking with Jesus about worrying future times and the response that Jesus made was that “many will come in my name, claiming, ‘I am the Messiah’ and will deceive many. You will hear of wars and rumours of wars, but see to it that you are not alarmed. Such things must happen, but the end is still to come.”

This short passage reveals in whose hands we are held, the knowledge of future and the sovereignty of God who, through all, remains in control. Jesus is making clear that he is the true Messiah, that he will not deceive, that our times are in his hands and that ultimate control and timing is his. True freedom, and hope for a better tomorrow, is to give ourselves up to God, seeking God's will and God's purpose; and to spread God's love to each other.

This hope can be re-ignited this month as we remember (at our Memorial Service on 3<sup>rd</sup> November) those we have loved who have died. We remember especially those who have given the ultimate sacrifice as they laid down their lives for others during times of conflict (we have Remembrance Services at both Blackheath and Wonersh – see later for details).

As we read in John's Gospel, “Greater love has no one than this: to lay down one's life for one's friends.” The love of Jesus focussed entirely on service and drawing us into relationship. I pray that during this period of remembering, we may all do the same, placing others before ourselves.

With love,

*David*

# November Diary

for St John's Church, Wonersh

Sun 3		<b>23<sup>rd</sup> SUNDAY AFTER TRINITY</b>
	10am	All-Age Worship
	3pm	<b>Memorial Service</b> [ <i>see p.6</i> ]
Tues 5	9.30am	Morning Prayer
Thurs 7	10.30am	<b>Remembrance Service</b> with Wonersh & Shamley Green School
Sun 10		<b>REMEMBRANCE SUNDAY</b>
	8am	Holy Communion (BCP)
	10am	<b>Remembrance Service</b>
Tues 12	9.30am	Morning Prayer
Thurs 14	10.30am	Morning Worship
Sun 17		<b>2<sup>nd</sup> SUNDAY BEFORE ADVENT</b>
	10am	Holy Communion
Tues 19	9.30am	Morning Prayer
Thurs 21	10.30am	Holy Communion (CW)
Sun 24		<b>1<sup>st</sup> SUNDAY BEFORE ADVENT</b>
	8am	Holy Communion (CW)
	10am	Morning Worship
Tues 26	9.30am	Morning Prayer
Thurs 28	10.30am	Discovery Service
<b>December</b>		
Sun 1		<b>ADVENT SUNDAY</b>
	10am	All-Age Worship
Tues 3	9.30am	Morning Prayer
Thurs 5	10.30am	Holy Communion (BCP)
Sun 8		<b>2<sup>nd</sup> SUNDAY IN ADVENT</b>
	8am	Holy Communion (BCP)
	10am	Morning Worship
.....		
CW = Common Worship (2000)      BCP = Book of Common Prayer (Traditional 1662)		



## **Christmas Services**

### **St John's**

Sunday 15 December	3pm	CHRISTINGLE and FAMILY CAROLS
Sunday 22 December	6pm	CAROLS BY CANDLELIGHT
Tuesday 24 December	3pm	CRIB SERVICE
Wednesday 25 December	9am	HOLY COMMUNION
	10.30am	CHRISTMAS DAY FAMILY SERVICE

### **St Martin's**

Sunday 8 December	6pm	CAROLS BY CANDLELIGHT
Tuesday 24 December	11pm	MIDNIGHT COMMUNION
Wednesday 25 December	10am	CHRISTMAS COMMUNION with CAROLS



### **Midweek Service** Every Thursday at 10.30am



Thursday services take place in the church and are followed by coffee and a chat in the Selwyn Room. Transport is provided for those needing it, and many say that this quiet and reflective service is the highlight of their week.

**Everyone is welcome!**

## **Church Office**

The Church Office (in The Vicarage) is open as follows:

<b>Monday</b>	<b>9 am - 2 pm</b>
<b>Tuesday - Thursday</b>	<b>9 am - 1 pm</b>
<b>Friday</b>	<b>9 am - 2 pm</b>

The office number is **01483 890266** (if outside office hours you may leave a message), or email [office@wonershchurch.org.uk](mailto:office@wonershchurch.org.uk).

## **Copy Deadline for Dec.2024/Jan.2025**

Please submit articles for the December/January issue by **Tuesday 12<sup>th</sup> November**.

E-mail address for copy is [magazine@wonershchurch.org.uk](mailto:magazine@wonershchurch.org.uk).

For advertising, please contact John Gosden ([JohnGosden@aol.com](mailto:JohnGosden@aol.com) or tel.502076).

[www.wonershchurch.org.uk](http://www.wonershchurch.org.uk)

MUMS, BUMPS  
&  
BABIES  
(UP TO CRAWLING)

MONDAYS 10AM-MIDDAY

THE VICARAGE, ST JOHN'S CHURCH,  
THE STREET, WONERSH, GUS OPG

TEA, COFFEE, HOME BAKED CAKES  
CHAT AND FRIENDSHIP

FREE PROFESSIONAL POSTNATAL AND  
SLEEP SUPPORT AVAILABLE

Contact: [clare@wonershchurch.org.uk](mailto:clare@wonershchurch.org.uk)

CHATTERBOX  
PARENT & TODDLER GROUP

THURSDAY  
9.30-11.00AM

LAWNSMEAD HALL, WONERSH

TEA, COFFEE, CAKE  
SOFT PLAY, TOYS, STORY AND SONG TIME  
FRIENDLY CONVERSATION

[www.wonershchurch.org.uk](http://www.wonershchurch.org.uk)

Contact: [clare@wonershchurch.org.uk](mailto:clare@wonershchurch.org.uk)



Bible Stories  
Crafts & Activities  
Games  
Songs & Prayer  
Friendship

Come & Join us at  
The Vicarage,  
St John's Church, WonerSh  
Sundays, 10-11.15am

ALL AGE WORSHIP

1st Sunday of the month at 10.00am



ST JOHN'S  
WONERSH

# CHRISTMAS WREATH

## Workshops

Friday Dec 6th 7.30-9.30pm

Saturday Dec 7th 10am-12pm

at Lawnsmead Hall.

Plenty of help & encouragement  
offered and seasonal refreshments!

£15 Small Wreath (12 inches)

£20 Large Wreath (14 inches)



**Spaces limited! Please reserve your place  
by Dec 1st on 01483 890266 or email:-  
[community@wonershchurch.org.uk](mailto:community@wonershchurch.org.uk)**

WONERSH + BLACKHEATH

PARISH CHURCHES



ST JOHN'S

WONERSH

## Community Christingle Choir

**Sunday 15th December 3pm**

**(Rehearsals Saturday 7th, 14th Dec,  
9-9.45am)**

Register your interest with Clare:

[clare@wonershchurch.org.uk](mailto:clare@wonershchurch.org.uk)

## Community Carols Choir

(ability to read music helpful, but not essential)

**Sunday 22nd December 6pm**

**(Rehearsals Saturday 7th, 14th, 21st Dec,  
10.15-11.15am)**

Register your interest with Liz:

[hospitality@wonershchurch.org.uk](mailto:hospitality@wonershchurch.org.uk)



ST JOHN'S & ST MARTIN'S  
PARISH CHURCHES

# MEMORIAL SERVICE

AT ST. JOHN'S WONERSH

**A SERVICE FOR  
ANYONE TO  
REMEMBER, WITH  
THANKSGIVING,  
A LOVED ONE WHO  
HAS DIED.**

**Sunday 3rd November at  
3.00pm**

Each year, close to All Souls Day, the church at St John's holds a Memorial Service. This is a chance for those still living to remember a loved one with thanksgiving and in prayer.

Candles will be lit for those that have died over the last 12 months and, if you let us know as you arrive for the service, we will mention the person and light a candle in memory of those for whom you are attending.

The service will have space for reflection and personal prayer, as well as times of thanksgiving and celebration that the God who loves us came to meet us and bring us home.

All would be welcome to join us on **3<sup>rd</sup> November at 3pm** at St John's Church, Wonersh.



ST JOHN'S & ST MARTIN'S  
PARISH CHURCHES

## Men's Breakfast

**Come for a Fry Up!**

**Saturday 16th November 8.30am-10am**  
Lawnsmead Hall, Wonersh



Please contact: [vicar@wonershchurch.org.uk](mailto:vicar@wonershchurch.org.uk) to  
book your free place





ST JOHN'S & ST MARTIN'S  
PARISH CHURCHES

## A MEDITATION DURING ADVENT

**Everyone welcome!**  
**Monday 2nd December 7.30pm**  
**St Martin's Blackheath**

*Followed by refreshments and  
mince pies.*

Without repentance, our hearts will be so full of worldly things that there will be "no room at the inn" for Christ to be born again.



# Will 2025 be your year to move?

We specialise in selling the finest homes throughout the villages of Guildford and provide honest, professional and trustworthy advice, with our clients' best interests at heart.

Whether you're thinking of selling or letting now, or in 2025, we'd be delighted to help you start making preparations. Contact us today to arrange your valuation appointment, without obligation.



BRAMLEY



SHALFORD



CHILWORTH



SHALFORD



**Chanceries  
& Pewleys**

Cranleigh Sales  
01483 347888

Shalford Sales  
01483 304344

Lettings Office  
01483 405222

## WONERSH MEMORIAL HALL

Your village hall - very reasonable rates.  
Children's and family parties, classes, clubs  
and now skittles evenings!

Call Hilary Solt **07931 516910**  
or Louise Healy **01483 898539**

## R.A. ROBERTSON & SONS

High Street, Bramley.

Tel: Guildford 892207

[sales@robbo.co.uk](mailto:sales@robbo.co.uk)

TV - Domestic appliances - Sales & Service

## PROFESSIONAL GARDENER

46 years' experience

Pruning Maintenance (veg.) Hedges  
Fruit & Ornamental Trees Planting

**Mobile: 07340 525136**

## Tai Chi Class for Everyone on Monday evenings at Blackheath Village Hall

With Dr Luke Zhang who is Double  
Beijing Tai Chi Champion and retired  
medical doctor.

**Tel: 07507275522**

**Email: [luke@taichiguildford.co.uk](mailto:luke@taichiguildford.co.uk)**

**Website: [taichiguildford.co.uk](http://taichiguildford.co.uk)**

## MASON VOLLER LIMITED

**NICEIC registered**

Electrical Contractors - Domestic and  
Commercial - Installation & Repairs.

Builders Yard, Barton Road, Bramley, GU5 0EB

[info@masonvoller.co.uk](mailto:info@masonvoller.co.uk) **01483 572763**

## RICHARD LEE

**Painter & Decorator**

Experienced in all aspects of wall coverings,  
special effects, interior and exterior decorating.

**Over 30 years experience.**

**Tel: 01483 612055 / 07789685560 / 07717154392**

## Complete Clothing Care in Bramley Alterations, Repairs & More!

Fast affordable adjustment for the perfect fit.

Home service available.

**Call Maryna: 07867 073540**

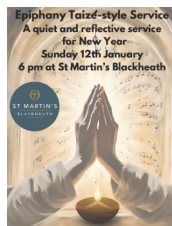
Let's make your wardrobe work for you!

# **Taizé-style Service**

## **Peace - Tranquillity - Reflection - Spirituality**

We were thrilled to welcome many individuals from various churches to St Martin's, Blackheath, for our Autumn Taizé-style service.

Taizé, a French liturgical tradition, invites everyone to come together to sing, pray and reflect on scripture. The service led us through readings ranging from Genesis to Revelation, along with poetry, all centred around the theme "For our Good Earth".



We enjoyed simple, repetitive songs in both English and Latin, led by a choir and accompanied by piano, flute and cello. The acoustics of St Martin's created a beautiful atmosphere for this reflective service.

Join us for our next gathering on **Sunday 12<sup>th</sup> January**, as we celebrate the Epiphany. It's a wonderful way to prepare for the week, and the year, ahead!

---

## **North Guildford Food Bank**

As I write, the Harvest Services have just taken place. Thank you to all those that brought donations (and to those who regularly drop off donations) which will boost our supplies over the winter period.



We now turn our thoughts to Christmas, when we like to give a few luxury items in addition to the basics. With that in mind, our requests this month are for the following:

**Sharing Sweets/Chocolates**

**Gift Toiletries**

**Boxes/Tins of Biscuits**

**Tinned Ham**

**Savoury Treats (crisps, etc.)**

Also, **strong carrier bags** are always useful.

Donated items can be left in the foyer of St John's church, or in the crate on Rosie Couzens' doorstep (**10 Little Orchard Way, Shalford, GU4 8JY**).

If you would rather make a financial donation, please refer to our website: [northguildfordfoodbank.co.uk](http://northguildfordfoodbank.co.uk) (if you are a taxpayer, Gift Aid can be claimed by the Food Bank on personal donations).

As always, thank you for your continued support.



---

## **Fundraising Milestone**

Phyllis Tuckwell's 'Your New Hospice Appeal' has hit a major £5 million fundraising milestone. A final £1 million now needs to be raised to reach the £6 million target to complete this vital project. The new Hospice will enable the local charity to deliver exceptional palliative care to thousands more local people, for generations to come.

To find out more, visit [pth.org.uk/newhospice](http://pth.org.uk/newhospice).



## Meet Liz Tilley

I was born and brought up on a farm in Sutton Green and have always had a close connection to the Guildford area, even if I spent much of my life many thousands of miles away in East Africa, in Kenya for almost 4 years and then in Tanzania for 25. I went following a strong sense of God's call, which I first

felt at the age of 13. The Christian faith has played an important part in my life for as long as I can remember, and has developed and grown stronger over the years.

My links with Wonerish began in the 1980s as my mother moved into a house in Barnett Close. When I was on leave from Tanzania I stayed with her. I remember vividly the warm welcome I was given at St John the Baptist Church when I arrived for the first time for a service, and was so encouraged by the interest in, and support for, our work of training church leaders in Tanzania. A visit from a former vicar, about a year before my return to this country, led me to join the team at Wonerish to develop a ministry amongst older people, and to consider ordination. Coming from a culture where I had seen the elderly valued, both within their families and the community, and cared for by them, I was pleased to have the opportunity to use my time and skills to support this section of society. I was ordained in July 2007 and after another 10 years of sharing in services and pastoral care, and organising activities for Seniors, I stepped back from that leadership role. However I continue to be involved, especially with Thursday morning services at St John's.

In November 2018, I took up the part-time post of Chaplain at Birtley House Nursing Home. I spend two afternoons each week at Birtley with most of my time given to visiting residents individually. That means I am able to get to know them and what is important to them as I sit with them, and we chat together. I lead a communion service once a month, a few other seasonal services, and occasionally a Songs of Praise when residents choose their favourite hymns.

A book that helped me greatly as I thought about being Chaplain at Birtley speaks of "the chaplain as a hopeful presence". I do see my role firstly as a presence – being available, to listen, share, encourage, talk about any subject of interest or concern, maybe a difficult issue or hard question about life or death, or just be there, alongside. I might read a poem, or a few verses from the Bible, play a hymn or pray, whatever might be helpful. It's a great privilege to be one of the staff there, sharing with residents and supporting them in any way I can in their later years and as they come to the end of their lives.

---

## Church Walking Group

The next Church walk will be on **Friday 15<sup>th</sup> November**, around the Chantries and Pewley Downs, followed by lunch in the Queen Victoria pub in Shalford. It will be about 5 miles with just one short hill and some gentle inclines.

If you would like to join us, or for more details, contact Catherine Keech: [catherine@keechonline.com](mailto:catherine@keechonline.com).

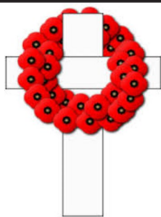
# Blackheath Focus

## November 2024



### Services at St Martin's

Sunday 3 <sup>rd</sup> November	Sung Holy Communion	10am
Sunday 10 <sup>th</sup> November	Remembrance Day Service at the War Memorial on the Heath [see below]	10.50am
Wednesday 13 <sup>th</sup> November	Morning Prayer	9.30am
Sunday 17 <sup>th</sup> November	Choral Evensong	6pm
Sunday 24 <sup>th</sup> November	'Be Still with God'	6pm
Wednesday 27 <sup>th</sup> November	Morning Prayer	9.30am
Sunday 1 <sup>st</sup> December	Sung Holy Communion	10am
Monday 2 <sup>nd</sup> December	Advent Meditation [see p.6]	7.30pm
Sunday 8 <sup>th</sup> December	Carol Service [see below]	6pm



### REMEMBRANCE SUNDAY BLACKHEATH

Do join us at the War Memorial on  
the Heath for the annual  
**Remembrance Day Service**  
starting at **10.50am** on  
**10<sup>th</sup> November**



**ST MARTIN'S**  
BLACKHEATH



JOIN US FOR CAROLS  
BY CANDLELIGHT  
ON DECEMBER 8TH AT 6PM





*Coffee morning,  
Monday 25th November  
10.30am-12.00pm  
Blackheath Village Hall*

## **Blackheath Care Team**

The Blackheath Care Team has a pool of volunteers for residents in Blackheath who need a lift to hospital appointments, or dentist or surgery appointments; the volunteers can also collect prescriptions, etc.

If you need assistance, please contact Penny Kirkwood on **07973 836987** (phone or text), or otherwise Alex Jones on **07810 486521**.

We are happy to help!

---

## **Study Morning: Michelangelo Saturday 23<sup>rd</sup> November, 10.30am - 12.20pm St Augustine's Abbey, Chilworth, GU4 8QR**

Members of the public, of all faiths and none, are invited to learn about **Michelangelo, the Artist**.

Fr John Seddon OSB, resident Benedictine monk at the monastery, will show Bishop Barron's video on Catholicism's Pivotal Players, and then lead the discussion about it afterwards. You need no prior knowledge, do not have to be Catholic and don't have to contribute anything to the discussion if you prefer.



Optional holy Roman Catholic Mass is at 9am in the Abbey Church. Then we meet in the Assisi Room at the rear of the monastery for the video and talk.

Refreshments will be freely available, and you're welcome to bring friends. To attend the Study morning, there is a charge of £10 per person for refreshments and room hire. There's a special offer of £25 for three people to attend.

For more information, and to book, visit [www.chilworthbenedictines.com](http://www.chilworthbenedictines.com).

# Village News

## Wonersh & District Garden Club

On **Wednesday 6<sup>th</sup> November** we welcome Geoff Peach entertaining us with his talk **‘Flower Shows can be fun’** - 7.15 for 7.30 pm start at the Memorial Hall. Visitors welcome for entry fee of £3.



Our club is thriving but new members are most welcome, especially if you have just moved to the area and would like to meet others with an interest in gardening.

Wonersh & District Garden Club meets on the 1<sup>st</sup> Wednesday of the month at 7.30pm in the Memorial Hall. The programme for next year promises some excellent speakers in a friendly atmosphere.

For more information, please contact Hilary Goodridge: **01483 535108** or [hilarygoodridge@ymail.com](mailto:hilarygoodridge@ymail.com).



## Wonersh United Reformed Church

Minister: Revd Graham Hoslett (tel: 07425 569807)

Facebook - Wonersh United Reformed Church

### November 2024 - News

Please see details below of our activities at Wonersh URC, including **Film Club** on **6<sup>th</sup> November** when we will be showing **‘One Life’**, a truly excellent film. And don’t forget **Tea@3** on Thursdays at 3pm; and the **Taizé Service** on **Wednesday 27<sup>th</sup> November**.

We will also be continuing with **HOPE EXPLORED**, which is exploring the Hope, Peace and Love available in Jesus - all welcome. Further information from me on **07425 569807**.

God bless.

*Revd Graham Hoslett*

DATES	DETAILS
Sunday, 3 <sup>rd</sup> Nov.	10.30am: Livestreamed Service
Wednesday, 6 <sup>th</sup> Nov.	7pm: Film Club - <b>‘One Life’</b>
Remembrance Sunday, 10 <sup>th</sup> November	<i>No Service - we are encouraged to join with others.</i>
Sunday, 17 <sup>th</sup> Nov.	10.30am: Livestreamed Service
Wednesday, 20 <sup>th</sup> Nov.	7pm: HOPE EXPLORED - Revd Graham Hoslett
Sunday, 24 <sup>th</sup> Nov.	10.30am: Morning Worship - Jane Briggs
Wednesday, 27 <sup>th</sup> Nov.	7pm: Taizé Service - Revd Graham Hoslett

# **Wonersh History Society**

## **Saturday 16<sup>th</sup> November, 2.30pm**

### **Wonersh Memorial Hall**



Have you wondered what Guildford was like in the war years? At Wonersh History Society's next meeting the ever-popular David Rose will present his take on the subject. Perhaps he'll cover George VI's visit to Stoughton Barracks in 1939. Or maybe discuss Dennis Brothers motor-works making munitions for the war effort. Or touch upon the local Home Guard, the Women's Land Army, air raids or those who were part of the civil defence. To find out join us on 16<sup>th</sup> November.

Guests are welcome for a fee of £3. To find out more about the Society, including how to become a member, see [www.wonershhistory.co.uk](http://www.wonershhistory.co.uk).

---

## **Speedwatch: Volunteers Needed**

Our local Community Speedwatch Groups, in Wonersh and Shamley Green, continue to operate at least weekly. But both groups need more volunteers if they are to continue these sessions, so that they can make an impact on speeding through our villages.

If you could help, please contact the Parish Clerk: [clerk@wonershparish.org](mailto:clerk@wonershparish.org).



---

## **Community Fund**



Are you **struggling**  
with **money problems**  
and need **help**?

We can **HELP** you!

WUC (Wonersh United Charities) offers small grants to those who face financial difficulties and need help paying for everyday items, e.g. a dishwasher or school uniform. We can also provide details of other charities and organisations which can offer support and advice.

All enquiries are treated with  
the utmost confidentiality and discretion.

Contact Kevin Garvey - **892030**

or email [wonershunitedcharities@gmail.com](mailto:wonershunitedcharities@gmail.com).

# U3A Wonersh & District

Your local U3A, covering Blackheath, Bramley, Chilworth,  
Shalford, Shamley Green and Wonersh



## What's on in November 2024 – join us for these activities

Fri 1	<b>French:</b> Godalming	Wed 20	<b>Table Tennis:</b> Arbuthnot Hall, Shamley Gn
Mon 4	<b>Pilates:</b> Lawnsmead Hall, Wonersh	Thurs 21	<b>Long Walk:</b> meet Puttenham Common, top car park
Tues 5	<b>Tai Chi Improver/Inter:</b> Lawnsmead Hall		<b>Latin Advanced:</b> Godalming
Wed 6	<b>Table Tennis:</b> Arbuthnot Hall, Shamley Gn		<b>Pottery:</b> Farley Green
Thurs 7	<b>Mah Jong:</b> Bramley Library Room		<b>Current Affairs:</b> Turner Room, Wonersh
	<b>Latin Advanced:</b> Godalming	Fri 22	<b>Art:</b> Bramley Village Hall
	<b>Pottery:</b> Farley Green	Mon 25	<b>Pilates:</b> Lawnsmead Hall, Wonersh
Mon 11	<b>Pilates:</b> Lawnsmead Hall, Wonersh	Tues 26	<b>Tai Chi Improver/Inter:</b> Lawnsmead Hall
	<b>Book Club:</b> Selwyn Room, Parish Church	Wed 27	<b>Coach Outing:</b> The Vyne (NT), Hants
Tues 12	<b>Tai Chi Improver/Inter:</b> Lawnsmead Hall		<b>Table Tennis:</b> Arbuthnot Hall, Shamley Gn
Wed 13	<b>Table Tennis:</b> Arbuthnot Hall, Shamley Gn	Thurs 28	<b>Latin Intermediate:</b> Godalming
	<b>Pub Lunch:</b> Drummond Arms, Albury		
Thurs 14	<b>Line Dancing:</b> Arbuthnot Hall, Shamley Green		
	<b>Latin Intermediate:</b> Godalming		
Fri 15	<b>French:</b> Godalming		
Mon 18	<b>Pilates:</b> Lawnsmead Hall, Wonersh		
Tues 19	<b>Tai Chi Improver/Inter:</b> Lawnsmead Hall		

*Join us for some very interesting talks, visits  
and activities. Newcomers are welcome.*

*For further details, please phone Deirdre  
on 07792 741749, or visit*

<https://u3asites.org.uk/wonersh>

## Wonersh Bowls Club Clubhouse Rebuild & New Community Hub



We turn **100** in 2025 and our Clubhouse is in a state of disrepair and in much need of disabled facilities. The rebuild will also include a **New Community Hub Facility**, offering different year-round activities for all.

This is a self-build project, saving the club a significant amount of costs. To achieve this, we have to be realistic, not relying on the funding applications we are currently in the process of submitting, as we may not be granted any!

Here are a few ways you could help support our community for the next 100 years:

- **‘Buy a Brick’** - become part of history and have your name featured on our Centenary Wall, with each brick slip costing £125.
- **Make a Donation**, from you or your business, of any amount you wish - small or large, all will be gratefully received!

Our CASC status (no. CH12604) enables us to secure an **additional 25%** in funds from individual donations made by UK taxpayers. Please note that any donations and their amounts will be **strictly confidential**.

If you can help, please email [funding-wbc@outlook.com](mailto:funding-wbc@outlook.com). Thank you!





## **‘Joy in Music’ Opens New Cranleigh Village Hall**

Cranleigh Village Hall has had a dramatic new facelift and was opened with its first production on 28<sup>th</sup> September. The auditorium has been tastefully decorated, having new curtains, lighting and a spectacular acoustic ceiling using the Albert Hall designs.

The special performance in September entitled ‘Joy in Music’ was presented by Cranleigh’s Memory Lane in-house musicians with further talented guest artists, Janet Beale from Adele and the U3A Ukulele Group. Their rousing raucous songs had everyone singing the songs they all remembered. It was such a bonanza of joy for those experiencing dementia recalling the old tunes. At times the hall came alive with singing, and of course clapping to Strauss’s Radetsky March No 5 played by Janet on the accordion. It was an excellent combination of music and poetry created by Liz Westaway, a trained opera singer, who leads music sessions each month at Memory Lane in the Cranleigh Arts Centre.



People came from Care and Dementia groups from Guildford to Horsham and villages between, along with others who were lonely and welcomed the support given. The hall was bursting at the seams as extra seating was added around the perimeter, which meant Memory Lane was delighted to be able to donate to the Alzheimer’s Society for their work in stabilising the disease.

*Memory Lane meets regularly at 2.15pm in the Cranleigh Arts Centre on the 1<sup>st</sup> & 3<sup>rd</sup> Monday each month. For further details, please contact Memory Lane: [mamwild@aol.com](mailto:mamwild@aol.com) or 01483 274398.*

---

## **Christmas Celebration Saturday 7<sup>th</sup> December, 7.30pm Guildford Cathedral, GU2 7UP**



Join us for a sensational concert featuring the celebrated composer, **Sir John Rutter**. Prepare to be swept away by an enchanting evening of carols and Christmas music, presented by the talented Guildford Cathedral Choir alongside brass, organ and the audience. This evening promises to be a delightful blend of traditional and contemporary pieces, creating a joyful and festive atmosphere.

For more information, and to book tickets, visit [guildford-cathedral.org](http://guildford-cathedral.org).

**Twinkle toes**  
 Mobile  
 foot care clinic

MEMBER OF  
  
 BPA  
 British Podiatric Association

**Kirsten Hall** MCFHP MAFHP  
 07592 853178  
 twinkletoesfeet@outlook.com

• All in the comfort of your home •

**LAWNSMEAD HALL**  
 A Victorian building, extensively  
 restored, with well-appointed and  
 comfortable facilities.  
 Located in the centre of Wonersh,  
 looking out over the cricket green.  
 To book either the Main Hall or the  
 smaller Turner Room, contact the Parish  
 Administrator on 01483 890266, or  
 email [office@wonershchurch.org.uk](mailto:office@wonershchurch.org.uk)

**MULLARD**  
 FUNERALS — GODALMING SINCE 1847

INDEPENDENT FUNERAL DIRECTORS  
 & MEMORIAL MASONS



- 24 Hour professional & personal service
- Pre paid & pre arranged funerals
- Private chapels of rest

01483 860279 • [www.mullards.uk](http://www.mullards.uk)  
 121-123 High Street, Godalming  
 Surrey, GU7 1AG

**FM**

**Feeling lonely? Fancy a tasty lunch  
 and a friendly chat?**

Then join the Villages Wednesday Club. We meet at Blunden  
 Court, Bramley every Wednesday 10am-2.30pm

For only £6 you get morning  
 coffee, a freshly prepared  
 lunch, entertainment and  
 afternoon tea  
 For older people living in  
 Shamley Green, Wonersh,  
 Bramley and the surrounding  
 villages it's a lovely day out  
 and a chance to meet old  
 friends and make new ones!



**The VILLAGES WEDNESDAY CLUB**  
 open to anyone living in Bramley,  
 Wonersh, Blackheath, Shamley  
 Green and surrounding villages



For more information  
 contact the manager  
 Nicola Mendelsohn  
 on 01403 470895 or email  
[manager@fourvillages.co.uk](mailto:manager@fourvillages.co.uk)  
 or just pop in any  
 Wednesday for a chat  
 Get in touch now either for  
 yourself or for a member of  
 your family.  
 We may be able to help with  
 transport - please ask  
 more details on  
[www.fourvillages.co.uk](http://www.fourvillages.co.uk)

**WINTERSHALL**  
 Experience the story

THE  
**NATIVITY JOURNEY**  
 A PLAY FOR ALL THE FAMILY

11 - 16 DECEMBER 2024

**BOOK NOW!**



**Come and enjoy the real  
 Christmas story at Wintershall**

Walk with Mary, Joseph and the donkey on the winding,  
 steep road to Bethlehem. Register for the census and  
 journey with other travellers, Roman soldiers and shepherds  
 as you enter the stable to watch the miracle unfold.  
 The Wintershall Nativity Journey is an unforgettable  
 experience, bringing the true meaning of Christmas to  
 life for the whole family.  
 Each performance lasts approximately 90 minutes.

*Please note that some scenes are performed outside and some  
 inside Holly Barn theatre, your visit includes a 10 minute walk up a  
 steep hill. Limited disabled parking is available for those who need it  
 most next to Holly Barn Theatre but this must be pre-booked by  
 emailing [admin@wintershall.org.uk](mailto:admin@wintershall.org.uk).*  
 Holly Barn, Bramley, Guildford GU5 0LR.



Book tickets now on  
 our website:  
[www.wintershall.org.uk](http://www.wintershall.org.uk)  
 or call 01483 892167

**S B I L E**  
 C I E

f x i



# News from our Village School

[wsg.surrey.sch.uk](http://wsg.surrey.sch.uk) | [@MediaWsg](https://twitter.com/MediaWsg)

It has been a delight to see the children back in classrooms showing curiosity and enthusiasm for learning. Our new Reception children are starting to learn the routines of school life. They have settled wonderfully well and are already making new friendships.

The school is running a joint project with Womersley Church to create a new Prayer Space. The children have been involved in transforming this area into a cosy, reflective space which will be accessible to all. A huge thank you to Clare from St John's Church for setting up this space.



The children have thoroughly enjoyed their return to the football season with matches against Longacre, Cranleigh Prep and Tillingbourne. We've also been busy playing netball and hockey; and with the start of a new after-school Rock Band Club!

The start of the Autumn term has been so much fun, with the Harvest Festival and an art exhibition supporting Christ Church in Shamley Green to raise money for [WaterAid](http://www.wateraid.org).



WaterAid's vision is of a world where everyone, everywhere, has safe and sustainable water, sanitation and hygiene.

In the past, we have helped to change the lives of **tens of millions** of people by working with them to bring clean water, decent toilets and hygiene to their communities. **Together with our partners – and with you – we will work towards the day when our work is no longer needed.**



Please visit [www.stcatherines.info](http://www.stcatherines.info) for more details.



## INFORMAL CONCERT

**Monday 18<sup>th</sup> November at 7pm**

Lower Atrium - no need to pre-book tickets.



## BABY CATS | LET'S GET CREATIVE

**Friday 15<sup>th</sup> November | For 2-4 yrs**

Let us stimulate your child's creative mind and join us for an arts and crafts session. Be prepared to get messy!

9.30-10.30am | St Cats Prep Gym

There is no charge but please book your place on [tinyurl.com/yc3scsesh](http://tinyurl.com/yc3scsesh).



## Appeal for Help

Local resident Glyn Powell-Evans urgently needs help towards the completion of his new 3D book about a child evacuee who came to Wonersh & Shamley Green in the Second World War. This is a really worthwhile project intended to raise money for the [Rural Life Museum](#) in Tilford.

- To get it published, he needs some support to cover the design costs, otherwise the project will have to be shelved. All that is needed is a few people to **pre-order copies of the book and make a small donation**, for which they will receive a credit in the book.
- Do you have any toys, magazines, etc. that would have been sent to a child evacuee as a present? Also, mementoes from WW2 such as ration books, bus tickets, etc. which might be suitable for scanning and including in the book. Glyn would need to borrow these for a few days for one of the final photographs in the book.
- Do you know anyone who was an evacuee and who lives locally in Surrey? Glyn would like to add dedications in the book to acknowledge their experiences.

For more information, see [powell-evans.com/operation-pied-piper-book](http://powell-evans.com/operation-pied-piper-book).

---

## Villagers Pub Update

The plan to reopen the Villagers Pub in Blackheath suffered a blow this year when the owner of the remainder of the building allocated for the local facility requested planning to change it into a residential unit again.

Initially this planning permission was granted by Waverley, under strong protest from the majority (80%) of the village. The pub committee confirmed with a legal team that the decision was flawed and have reason to believe that the current decision will be reversed.

We will now once again engage with the owner with the intent of purchasing the unit and returning it to use as a local Café/Pub.

---

## Christmas Party Show! Wednesday 11<sup>th</sup> December Wonersh Memorial Hall

**Rural Roars** invite you to our very special Christmas show with a top secret line-up (to be revealed) featuring TV comedians, international cabaret stars, etc. With a welcome glass of bubbly, plus a late bar and Christmas tunes after the show, you won't want to miss this!

Tickets £20, available soon via [ticketsource.co.uk/rural-roars](http://ticketsource.co.uk/rural-roars).



*Guildford Chamber Choir*  
Principal conductor: Max Barley

# MESSIAH

*George Frideric Handel*

*Saturday 2<sup>nd</sup> November 7pm*

*Holy Trinity Church Guildford GU1 3RR*

[www.guildfordchamberchoir.org.uk](http://www.guildfordchamberchoir.org.uk)



Banish the gloom and warm your soul with the power of music!

Handel's 'Messiah' is a much-loved staple of the choral repertoire, and includes well-known favourites such as the Hallelujah Chorus.

Doors open from 6.30pm. There will be a short interval, and refreshments will be available in the church after the performance.

Tickets available in advance for **£18** (students £5); or on the door for **£20**.

We are delighted to once again be supporting the [Cheryl King Trust](#). This local charity supports various music education projects for young people from disadvantaged backgrounds, enabling the gift of music.

Earlier in the year, the choir enjoyed a wonderful concert in tribute to our founder Richard Fox. Thanks to all our supporters, we were delighted to raise more than £1,300 for the Phyllis Tuckwell Hospice.

---

## **Ladywell: a Global Journey of Faith The Life and Mission of the Franciscan Sisters Saturday 23<sup>rd</sup> November, 10.15am - 12 noon The Franciscan Centre Ladywell, GU7 1ST**

Join us for an inspiring public talk by Sister Jane Bertelsen, Congregational Leader of the Franciscan Missionaries of the Divine Motherhood (FMDM).

Sister Jane will share the rich history and global mission of the FMDM. She will also delve into the profound spirituality of St Francis and St Clare of Assisi, which continues to shape and guide the sisters' work worldwide. Don't miss this opportunity to explore the heart of Franciscan life and mission.



The talk will be followed by coffee and delicious cake, provided by the Sisters of Ladywell, and a special tour of the chapel.

Tickets are £5 per person, or £12 for a group of three, with under-25s free of charge. Advance booking is recommended via [TicketSource](#) (search 'Ladywell'), with proceeds supporting both Ladywell Convent and the Guildford and District Knights of St Columba.

# **The One Act Plays**

## **14<sup>th</sup> - 16<sup>th</sup> November, 7.30pm**

### **Peaslake Memorial Hall, GU5 9RR**



Book your seats now for a fabulous evening of comedy and drama - two plays with very different moods, and both equally entertaining!

**Quake** tells the story of five women isolated by an earthquake in South America - under the strain, relationships are brought into question and tensions rise.

**Grass** is an abridged comedy about family morals, in which various themes and undercurrents are brought to the fore.

Our well-stocked bar will be open from 7pm, so do come early and enjoy a drink before the performance starts.

Box office open now at [peaslakeplayers.co.uk](http://peaslakeplayers.co.uk).

---

## **Guildford Cathedral**

### **Christmas Fair**

#### **Fri. 22<sup>nd</sup> / Sat. 23<sup>rd</sup> November,**

#### **10am - 4pm**



Guildford Cathedral's ever-popular two-day fair is back! Every year we welcome a wonderful range of artists, crafters and makers to the Cathedral. This unique shopping experience will have over 50 exhibitors selling an eclectic mix of bespoke Christmas gifts and decorations, spirits, jewellery, accessories and much more!

The Cathedral Shop will also be open, stocked with wonderful items for Christmas; whilst Seasons, our café/restaurant, will be selling drinks, snacks and lunches.

---

## **Light up a Life**

### **Sunday 8<sup>th</sup> December, 7.45pm**

### **Guildford Cathedral, GU2 7UP**

Phyllis Tuckwell is inviting anyone who would like to remember a loved one to come along to its **Light up a Life** service outside the Cathedral. We will join together for readings and carols, and the image of a Christmas tree will be projected onto the front of the Cathedral building. During the service, the lights on the tree will be 'switched on'.



If you would like to, you can make a dedication in memory of your loved one, and after the service their names will be projected onto the front of the Cathedral, where they will remain until 10pm.



For more information, and to make a dedication, visit [pth.org.uk/lual2024](http://pth.org.uk/lual2024).

<b>VICAR: Rev'd David Peters</b>	<b>07521 090179</b>	<a href="mailto:vicar@wonershchurch.org.uk">vicar@wonershchurch.org.uk</a>
<b>CHURCH OFFICE</b>	<b>01483 890266</b>	<a href="mailto:office@wonershchurch.org.uk">office@wonershchurch.org.uk</a>
<b>(for all other church contacts)</b>		

## Village Contact Points

**Wonersh & Shamley Green CE Primary School**

**892345**

Headteacher: Mr Tim Cheesman

**Police:** Emergency **999** or **112** Non-emergency **101**

Safer Neighbourhood Team

[waverley@surrey.police.uk](mailto:waverley@surrey.police.uk)

Inspector Rob Brian (ID 3048)

[Rob.Brian@surrey.police.uk](mailto:Rob.Brian@surrey.police.uk)

Sergeant Phil Bayman (ID 40264)

[Phil.Bayman@surrey.police.uk](mailto:Phil.Bayman@surrey.police.uk)

PC Gavin Greenaway (ID 40221)

[Gavin.Greenaway@surrey.police.uk](mailto:Gavin.Greenaway@surrey.police.uk)

PCSO Felicity Lock (ID 14267)

[Felicity.Lock@surrey.police.uk](mailto:Felicity.Lock@surrey.police.uk)

**Waverley Borough Councillor:** Michael Goodridge MBE

**535108**

[michael.goodridge@waverley.gov.uk](mailto:michael.goodridge@waverley.gov.uk)

**Lawnsmead Hall:** Church Office

**890266**

**Memorial Hall:** Hilary Solt

**07931 516910**

**WonCares** (Monday to Friday)

**894004**

**Wonersh Connections**

[www.wonershconnections.org](http://www.wonershconnections.org)

### 1st Wonersh Scout Group



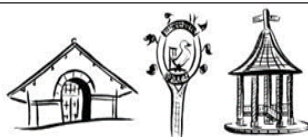
**Group Scout Leader:** Robin Beeson **07766 641777**

email: [1stwonershgsl@gmail.com](mailto:1stwonershgsl@gmail.com)

## Wonersh Parish Council

BLACKHEATH • SHAMLEY GREEN • WONERSH

[www.wonershparish.org](http://www.wonershparish.org)



### Your councillors:

Please telephone any of us if you have a local issue you would like to discuss.

The Parish Office, located at Wonersh Sports Pavilion, is open by appointment - call the Parish Clerk (Lisa Davison) on **892601** or email [clerk@wonershparish.org](mailto:clerk@wonershparish.org).

Email and telephone messages are monitored Monday to Thursday.

Anthony Shutes (Chair)	890831
Mike Band	892880
Max Gibbs	07766 994005
Chris Howard	894437
Ben Knight	07966 269182
Stephen Lavender	07966 533951
Rob Merriman	07711 654699
Kevin Sloan	898472
George Sobek	07354 809130



# Birtley House Nursing Home

*Exceptional care in an idyllic setting - since 1932*

Independent living, respite care, nursing care, long term care,  
and end of life care within a beautiful Surrey Hills landscape

[www.birtleyhouse.co.uk](http://www.birtleyhouse.co.uk) • Birtley Road, Bramley, GU5 0LB • 01483 892 055

**Bullimores**



ESTABLISHED  
1928

## Accountants for Life

- Tax
- Accounts
- Probate
- Inheritance Tax & Executorship

Bullimores LLP licensed to carry out the reserved legal activity of non-contentious probate in England & Wales by the ICAEW



For advice, call us on: **01306 880880** | Email: [partners@bullimores.co.uk](mailto:partners@bullimores.co.uk) | Web: [www.bullimores.co.uk](http://www.bullimores.co.uk)



## ABACUS



**Wonersh  
Pest Control**  
and



## Wonersh Wasp Control

**Pest Control you can count on**  
**Telephone: 01483 299307**

Inclusion of an advertisement in this magazine does not imply that the Church endorses, or takes responsibility for, any product or service provided.