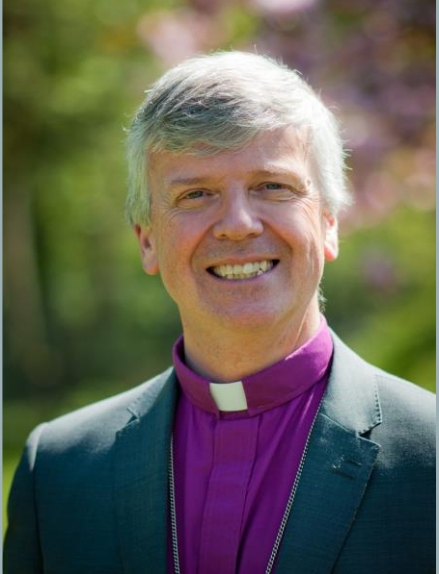




Tilford All Saints Church House for Duty Parish Profile

The Benefice of The Bourne and Tilford

INTRODUCTIONS



From Bishop Andrew

The Diocese of Guildford is a warm and friendly place to be, with a strong cohort of gifted and passionate laity and clergy, some excellent church schools, and plenty of beautiful countryside to enjoy on a day off!

Our vision as a diocese is to see lives and communities transformed through the love of Christ; and, to that end, we have recently refreshed our Diocesan Strategy Transforming Church, Transforming

Lives, with a particular focus on Growing Disciples, Growing Diversity and Growing Community. Although our congregations are generally rather larger than average, we are all too conscious that we are only reaching a tiny proportion of our Parish populations, and are particularly keen to become more effective in passing on the baton of faith to younger generations.

Our team of Mission Enablers are committed to working with every Parish in fleshing out that vision in an appropriate way, going with the grain of the church's history and tradition, whilst also suggesting new ways to 'proclaim the gospel afresh in each generation'. The pandemic, while presenting many challenges, has helped to forge new relationships between many of our churches, creating a spirit of 'us and us' more than 'them and us', and opening up new approaches to partnership and inter-church collaboration.

If you share our vision for transformation, and have a track record in growing disciples, growing diversity and growing community, we'd love to hear from you!

From the Archdeacon of Surrey, Paul Davies

It doesn't get more quintessentially English than Tilford. This is a stunning and highly desirable village to live, centring around the point at which the two branches of the River Wey meet, and the village green. Here, at the centre of the village, the vital organs of community life all face each other and interact - church, school, institute, pub and post office.

And yet it is not solely for its beauty that people wish to live here. The village community is welcoming, supportive, vibrant and fun. It's almost difficult to believe that such a small community (population c800) is capable of achieving so much in a year. And yet the Tilford Parish Magazine is evidence of the remarkable nature of this community and all that happens within it.

This post falls vacant on the retirement of the Revd Neil Fairlamb, the last resident priest. Whilst Neil only served 4 years, his short tenure has provided a strong platform on which his successor might build. As well as leading the church community through Covid, he also helped to put the building back together following an unexpected failure of plaster in the nave ceiling!

Watching the response to this major project, which cost over £100,000, gave me a real insight into Tilford: the massive commitment of the church community; the warm support of the village community; and the remarkable contribution of the Ahmadiyya Muslim Community whose worldwide headquarters are based in Tilford. They are great friends of church and community.

For the right person, this post is a gift. It is a delightful and do-able house for duty role, in a community where there are so many gifted and generous people around. In addition, the opportunity to be part of a bigger team at the Bourne prevents a feeling of isolation and there is always an invitation to pray with and plug into this team when opportunity and need arise.

If you do feel that you would like to know more about this post, please speak to the Revd Sandy Clarke, vicar of the Bourne and Tilford. Newly installed as incumbent, I'm very excited about her appointment too, and assure any interested candidate that they'd be working with a fabulous alongside extremely committed churchwardens and a delightful PCC.

With warmest wishes,

Paul





Revd Sandy Clarke

From Vicar of the Bourne and Tilford

'The Parish of Tilford is a place where community matters, where all the building blocks to create a thriving centre of worship are in place waiting for the leadership and vision that you may be called to bring for its flourishing.

While the congregation is small, it is loving and committed; the Church of England infants' school next door wants more involvement with the church; the volunteer children's worker is well connected with the school and is able to attract good sized congregations on All-Age Sunday; the Church Warden's, Treasurer, Safeguarding Officer and PCC in general are simply excellent; the green and pub are places of genuine community gathering, and we have a good relationship with the local mosque.'

The benefice ministry team based largely at St Thomas on the Bourne will be there to give you whatever support you need and will be keen to welcome you as a colleague if you are called to serve in this place. May I take this opportunity to wish you well in your discernment. If you would like to discuss this post, I would be delighted to speak with you.'



Tilford Village

- The Parish of Tilford serves a small and beautiful village community.
- All Saints' Church was opened in 1868 and is the only Christian place of worship in Tilford.
- The village of Tilford lies in the Green Belt part of Surrey approximately 3 miles south-east of Farnham, close to the border with Hampshire.
- The centre of the village is a Conservation Area and most of the surrounding area of farm, wood and heath land is designated as an Area of Outstanding Natural Beauty.
- The village has a shop and post office, a pub dating back to 1763, two Church of England Schools and a village green with an active cricket club.
- The Ahmaddiya Muslim Community have a significant presence with their mosque and housing compound located on the north side of the village and are involved in schools and village events.
- The Tilford Parish has approximately 800 generally prosperous residents mainly consisting of retired people and commuters in owner-occupied homes. In recent years significant numbers of younger families have moved into the village attracted by the rural but accessible location and good schools

All Saints Church

“Our vision is to be an inspirational, supportive Church where every member of our community is valued in a safe and caring environment at the heart of Tilford.”

- All Saints’ Church is set in the centre of the village.
- Our churchmanship is a happy balance of traditional with ‘middle of the road’ in which spirituality is varied and tolerant.
- There is a good blend of feeling, thinking and honest enquiry.
- The Church Building has had recent significant renovation works successfully carried out.
- We are linked with St Thomas-on-The Bourne in Farnham, but we organise ourselves as a traditional Parish church in seeking to be the natural home of Christians in this village.
- We offer a warm welcome to all on their journey of faith, not only for our Sunday worship but for the big occasions in life: baptisms, marriages, funerals and services of remembrance.





We are looking for a priest who...

loves God and can help us grow spiritually

- Is a strong and inspirational communicator, able to engage with people of all ages and cultures, to utilise our gifts and talents and to inspire others.
- has an inspirational and flexible approach, who embraces all forms of services: BCP, 10am traditional, and All Age Service with good solid support from each congregation.
- Is keen to work with our volunteer children's minister in continuing to make our church an attractive option for children and their families.
- to work alongside our local schools and enthusiastic about nurturing the links between church and school, willing to serve as a governor in All Saints Infants School
- Is eager to work within the village and have a leading role in our wider diverse community
- Can help us realise our vision to be an attractive, caring, growing church at the heart of our community
- To work individually here in All Saints Church, as well as being a team member in the wider United Benefice



Our Aims

- To provide weekly inspirational worship, teaching and prayer as worshipping God is at the heart of all we do
- To help encourage individuals and our church as a whole to grow in faith.
- To be a blessing to all in our community
- To grow in partnership with our school families, our wider community and the Ahmadiyya Community

Opportunities

- There has been an increasing influx of younger families attracted by the beautiful village setting, lifestyle and the highly rated OFSTED inspected schools.
- We have an energetic volunteer children's youth worker drawing in several families from the infant school next door.
- Since September 2022, every third Sunday we have been offering a very successfully attended 10am All Age Service that is well-supported by our village, All Saints School, and our own BCP and traditional congregations.

Our Challenges

- Through dedicated and inspirational fundraising, we are up to date in paying our monthly parish shares, but reserves are very low.
- Our most recent wish is to provide our volunteer children's minister with a salaried position in order to formalize her work with our church
- We are a small congregation with much potential and committed support and we are ready to grow.
- We may be at present 'vicar-less', but we are full of Hope and Perseverance!





Our Sunday Church Services

BCP with communion, 8am on 1st, 3rd and 5th

Parish Communion, 10am on 1st, 2nd and 4th.

All Age Praise, 10am on the 3rd Sunday

United Benefice Communion on the 5th Sunday.

All Saints' offers no regular weekday worship services. Special services are arranged for Holy Week, Ascension Day, and similar occasions. In a normal year we have around 5 weddings, 5 funerals and 5 baptisms.

A Lent programme is followed every year in conjunction with the Bourne. In 2018 this took the form of a number of small groups meeting across the benefice.

We have an average Sunday attendance of 30-35.



All Saints Church Crib Service Christmas 2022



Our Children

In our church Parish Room on a Tuesday on a bi-weekly basis you can find our toddler group, Little Saints, which is supported by a small but effective group of volunteers to help with coffee and snacks and leading of music.

Our children's choir, the Choir of Hope, sings in many of our All Age Services.

All Saints Juniors (ASJ), our Sunday School, restarted last September and runs weekly. We are currently growing our team.



Our Village Schools

All Saints Church of England Infants School

- Situated next to the vicarage
- Good relationship with church
- Lively groups of church volunteers present “Open the Book”, monthly.
- School visits church 4 times in school year with potential to grow



Waverley Abbey Church of England Junior School

- Situated north end of village
- Visits to the church three times in each school year
- The Bourne Parish currently lead assemblies there, but the school would love more Tilford involvement.



Ahmaddiya Community

There is an exchange of events that occur throughout the year with the Ahmadiyya community and All Saints' Church which include meetings of Interfaith Women's group and regular tours of the community.

Exhibition of Hope

- All Saints led a village wide exhibition in May 2022 which was an opportunity for all of us as a village to reflect together on 'the Covid Lockdown experience'. The Exhibition encompassed the village centre over two days and displays were in the Church Parish Room and grounds, on the Village Green and in the Tilford Institute. Centred around All Saints' Church, it gave the Tilford village a festival atmosphere filling us all with Hope for the future. Building on this event, we will run HopeFest in May of 2023.

Cafe Concerts

- Offered on the third Saturday of the month with a varied programme of readings and music, talented students from area schools, "Desert Island Discs", area choirs, local musicians and organ recitals. Coffee and biscuits are served before the concert, and a bread with soup lunch after.



Bishop Andrew and Organiser Mrs Rebecca Makemson EOH May 2022

An illustration of two hands, one from the top and one from the bottom, holding a large green heart. The hands are light brown with simple outlines. The heart is a solid green color. The background is white.

Parish Magazine and 100 Club

We have a popular monthly church magazine available largely online with the possibility of hard copies for those without internet access.

Our Parish magazine is well supported by our advertisers, is printed professionally, and can be subscribed to as a printed copy or to be read online.

<https://sites.google.com/view/all-saints-tilford/documents/parish-magazine?authuser=0>

The magazine raises over £1,000 pa for our funds.

We also run a 100 Club which raises over £2,000 pa.



Our Adult Choir

- We have a small and devoted choir who enjoy singing at the services although maintaining numbers is a challenge. The hymn books used for congregational singing are *Common Praise* supplemented with music taken from a variety of resources. Although there is a congregational preference for traditional hymns, a variety of worship songs are introduced at the All Age Family Services as well as in our regular services. The congregation accepts innovation without in any way discarding traditional practice.

Parish Website

- All Saints, Tilford has its own website where details of all church activities are recorded. The website includes a history of the parish, on-line parish records, church calendar, a gallery of past church events and on-line copies of past parish magazines. www.allsaintstilford.org.uk

Tilford Parish Team

A small, dedicated, flexible and enthusiastic village team

<https://sites.google.com/view/all-saints-tilford/about-us/our-team>

- Two Churchwardens: Sue Small and Jayne Sylvester
- Children's Minister (volunteer): Rebecca Makemson
- Treasurer: Charlotte Mathias
- Flowers, Cleaning, Locking Up, and Sunday Coffee staffed by dedicated volunteers.
- 10 or so lay people who read the lessons.
- ASJ (All Saints Juniors) has two volunteers
- Little Saints (weekday toddler group) volunteer team
- The PCC: Incumbent, the Resident Priest, one deanery synod representative, the two churchwardens and 9 elected members.
- The Electoral Roll as at the 2022 Annual Parish Meeting numbered 60.
- Clergy from The Bourne Parish cover the off-duty Sundays by arrangement





Ecumenical Links

- Tilford is a member of Churches Together in Farnham. As part of the Farnham Deanery, our representatives meet regularly in Deanery Synod, and the Deanery Chapter meets monthly for lunch and fellowship.

Parish Support (Administration)

- Administration for the parish is done by those who are concerned with various aspects of the church's work, e.g. Churchwardens and the Treasurer and is generally not the responsibility of the Resident Priest.
- Some assistance from The Bourne offices is at times required.
- On our website there is an inclusive church calendar to keep updated with church events and occasions.

<https://sites.google.com/view/all-saints-tilford/whats-on/calendar>

Our Building

- All Saints' Church is one of the largest village churches in the area, seating up to 250, and has been host to the Tilford Bach Festival in May for over 70 years, since 1952.
- The organ is a fine Edwardian instrument, built in 1909 by Alexander Young & Sons who were known for their quality of workmanship. It had major restoration work completed in 2013. Our organ is regularly maintained and gives a good sound.
- The Church has excellent acoustics with an attractive and pleasing sense of atmosphere adaptable for different kinds of worship.
- All Saints' church in normal times is open daily from mid-morning to late afternoon.
- We have a parish room which is normally used for All Saints Juniors during the 10am service and for coffee/tea gathering after our Sunday services.
- The church has Wi-Fi access allowing us to use relevant internet presentations, and we have a hearing loop for those who need it.
- Recently, we have acquired through a generous donation, a Rogers Studio Baby Grand Piano.





Historical development

- Our church was consecrated in 1867 and remained an independent Church with its own vicar until 1975 when there was a Suspension of Presentation, and a part-time priest licensed by the Bishop carried out ministry.
- In 1997 a new scheme was introduced in which the Parish kept a resident priest as 'House for Duty' and became part of the United Benefice The Bourne and Tilford.
- In 2006 we built a new Parish Room which is an attractive modern annex to the church with a meeting room, toilet and kitchen; it is available for Parish gatherings and hire by local clubs.
- Our church building underwent a major restoration following a serious plaster fall on October 31st, 2021. All the ceilings in the nave and south aisle were replaced and work was completed in August 2022. The church was closed for almost a year though worship continued by weekly Zoom sessions at 10am, and 8am services in the Parish Room.
- We also took the opportunity to repaint the whole church. It now looks as good as when first built. It has cost approximately £120,000 and ALL the money was raised ourselves and our local community.



All Saints Church Grounds

We have a large Burial Ground and a Garden of Remembrance for interment of ashes. The original records of these (and baptisms and weddings) are now deposited with the Surrey Archives for safe keeping but we do have scanned copies available on-line (through our Parish Website) for those wishing to trace family history.

We keep the main graveyard to have a natural meadow feel with one main cut a year; the Garden of Remembrance is attended to by regular strimming, all by volunteers. Churchyard maintenance is a challenge for us with limited resources and we are very grateful for those who support us with labour and donations. We have an ongoing Lives Remembered project to record the stories of those buried here. Churchyard maintenance is carried out on an ad hoc basis.

Finance And Fundraising

- We pay £35, 000 a year as our Parish share to the diocese with payments up to date.
- Tilford has a total annual income of around £44,000 and generates a very small surplus in most years, however the pandemic has had a significant impact in 2021.
- Approximately 60% of our income comes directly from donations of which about 75% is tax-efficient, the rest is a combination of fundraising and trading activities
- The largest cost is the Parish Share, which in 2021 accounted for 67% of total expenditure and 75% of total income.
- The vicarage belongs to the Diocesan Board of Finance.

Admittedly, we have seen a decline in regular giving in recent years both in terms of the numbers giving and the value as people do not regularly review their gifts in line with inflation. Fundraising remains a significant challenge despite the wealth of the local community, although significant amounts can be raised for an attractive cause as shown by the appeal to renovate the organ in 2012/3, and our most recent ceiling restoration appeal.

The parish pays the House for Duty water bills. Heating and electricity bills are paid by the priest.



A Mid-Summer's Day at our Annual Village Fete

The Vicarage (The House for Duty Residence)

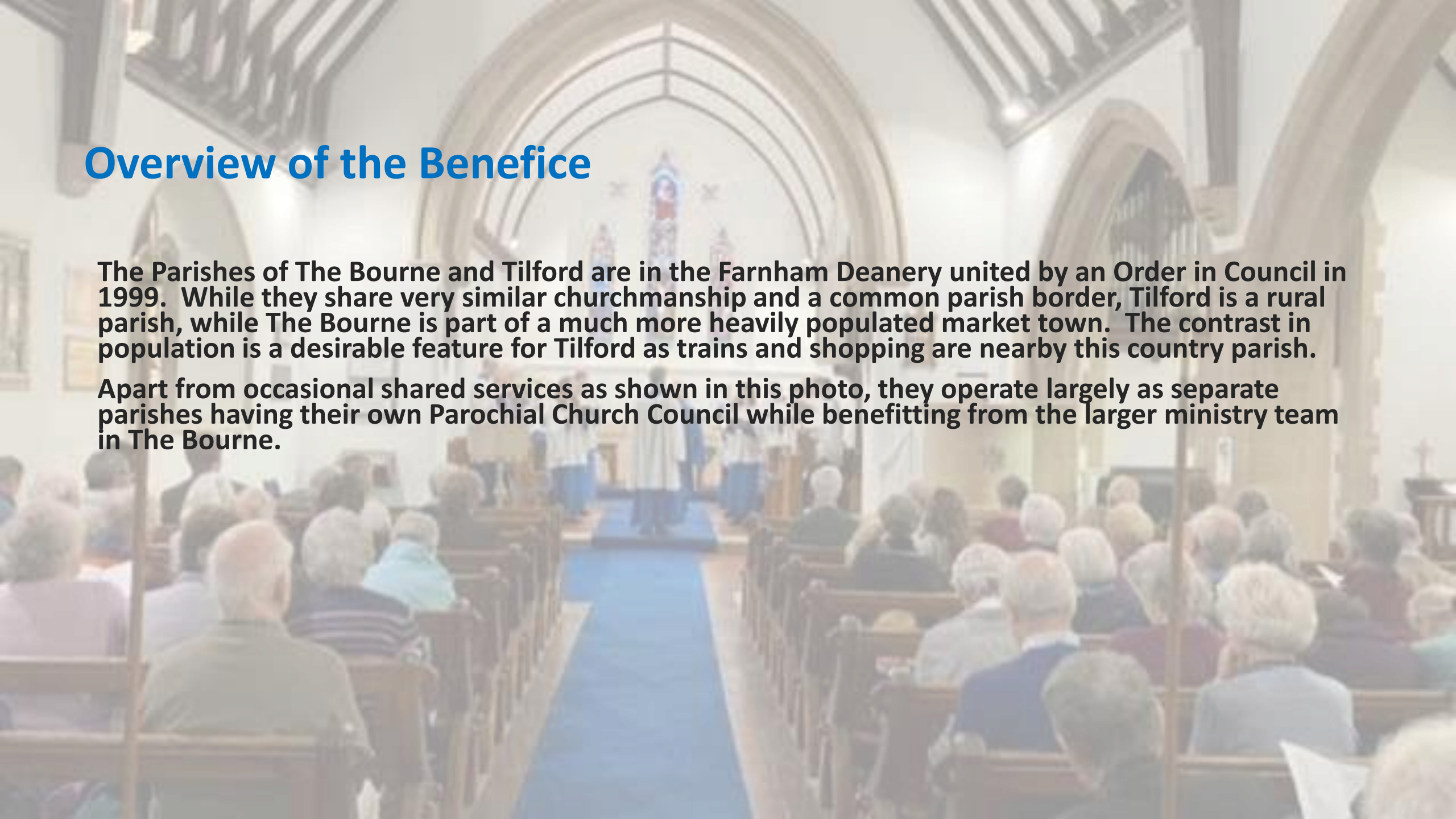
- The current vicarage was built in the 1960s and stands about 50 yards from the church and next to All Saints Infants School.
- The vicarage has a dining room, living room, kitchen, cloakroom and study on the ground floor. There are five bedrooms (one ensuite), and a family bathroom on the first floor. On the lower ground floor there is a utility room and double garage with a parking area outside. The cloakroom and study are separate from the main accommodation.
- The vicarage is kept in a clean state with a rolling programme of decoration, as necessary. New windows were installed in 2010. It should be noted that the vicarage is situated on the slope of a hill and has several steps up to the front door.
- As of January 2023, the interior of the vicarage will undergo an entire refurbishment completed by the diocese. Estimated finishing date April/May 2023.



Overview of the Benefice

The Parishes of The Bourne and Tilford are in the Farnham Deanery united by an Order in Council in 1999. While they share very similar churchmanship and a common parish border, Tilford is a rural parish, while The Bourne is part of a much more heavily populated market town. The contrast in population is a desirable feature for Tilford as trains and shopping are nearby this country parish.

Apart from occasional shared services as shown in this photo, they operate largely as separate parishes having their own Parochial Church Council while benefitting from the larger ministry team in The Bourne.



Benefice Links

- The Resident Priest is a member of the Benefice Ministry Team, which meets monthly for a formal Ministry Team meeting. Previous Resident Priests have chosen to join the Vicar to say Morning Prayer together occasionally. The Benefice Ministry Team consists of the Vicar, four retired priests, three Licensed Lay Ministers, two pastoral assistants and a hospital visitor. <https://www.thebourne.org.uk/life-and-worship/our-team/>
- All the clergy assist Tilford from time to time and there are opportunities for the Resident Priest in Tilford to lead worship in the other churches should they choose to do so.
- The Benefice meets together for the fifth Sunday of the month, our Lent course and events during Holy Week.



The Bourne Parish

- Churches and worship in the Parish
- The Bourne Parish comprises two churches, St Thomas-on-The Bourne and St Martin by the Green plus Brambleton Hall which also serves as a centre of worship within the parish.
-
- The Bourne Parish Vision
- “Radiating God’s love: transforming lives and communities” is our parish vision.. Underlying the vision is the belief in a God who loves, inspires, empowers and transforms us. In order to make a difference to the world around us, we each need to be, first and foremost, disciples of Christ.
-
- For further details about the Bourne parish and its ministry see their website:- www.thebourne.org.uk