

MAKING JESUS KNOWN

BEING PRESENT, WE WILL SHOW COMPASSION, SPEAK TRUTH AND OFFER HOPE



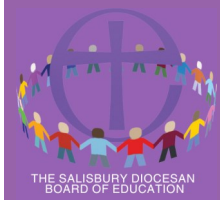
**THE SALISBURY DIOCESAN
BOARD OF EDUCATION**

Partnership Service Agreement

September 2024 to August 2025



Working Together with Your School or Trust



Working Together with your School

The SDBE are very pleased to warmly welcome you to our **Partnership Service Agreement (PSA)**, this document details our comprehensive offer to schools for 2024-25. We know how valuable schools find the provision of the PSA and this active and positive partnership has been identified through recent SIAMs inspections:

‘RE is enhanced and enriched through the school accessing much valued training provided by the diocese.’

‘Governors’ confidence in monitoring the school as a Church school is increasingly effective, and has been supported by the diocese.’

At the SDBE, we believe that our commitment to partnership working and our pledge to walk alongside you during in the everchanging educational landscape brings increased assurance and hope, enabling even greater flourishing in your church school. As well as the PSA, the SDBE have a parallel programme for schools in a multi academy trust family, this is the **Programme for Church School Flourishing (PCSF)** details of this programme can be found [here](#).

As we walk alongside you we continue to represent, guide, support and advise you beyond the PSA. We will:

- ◆ **Promote mental health and wellbeing** - Working to encourage good mental health enabling all to flourish and live well together
- ◆ **Extend Spiritual Leadership** - Enabling the development of spiritual leadership of school and academy leaders
- ◆ **Advocate for Children and Young People in parishes and schools**—working in creative and innovative ways
- ◆ **Represent you through strategic engagement** with the Education Office of the Church of England, Ofsted, DfE, RSC, LAs, Teaching School Alliances, **providing the Diocese of Salisbury Academy Trust (DSAT)** - a potential home for any church school
- ◆ **Offer advice about school estate and the formation of new schools** - we have much experience in this area
- ◆ **Champion Governance** - strategic advice and administration support related to the appointment of Foundation Governors, Trustees and Members
- ◆ **Support SIAMS** - provision of a SIAMS Manager and the development of support to help you prepare for inspection and fulfilment as a church school
- ◆ **Gift support for schools recruiting new headteachers** - support before and during the recruitment process and a visit to the new leader once in post (Head of School, Headteacher, CEO)
- ◆ **Guide you through MAT development / Academy conversion** - the provision of a mixed article MAT landscape enabling schools to join local MATs
- ◆ **Offer Model Admissions Arrangements** - provided as a basis for your own policy. There is a statutory requirement for schools to consult on their admissions policy at least once every seven years
- ◆ **Strategically support schools causing concern** - working with schools, MATs and education partners to better enable support for schools facing challenges
- ◆ **Guide and assist from our office-based Education Service Assistants**
- ◆ **Provide Critical Incident Support** - from a telephone conversation to pastoral support on site
- ◆ **Gift a Year 6 Leavers’ Service** - in partnership with Salisbury Cathedral
- ◆ **Enable access to the annual RE Conference**

The SDBE invites every church school to subscribe to the Partnership Service Agreement (PSA) at £575 +VAT



Please see separate documentation detailing all the SDBE led courses available in 2024-25. The list includes training included as part of the PSA Subscription and additional CPD offer.

In addition to the PSA the SDBE offers every church school a range of provision and tailored work, as priced below, bespoke to the needs and context of each school & academy. This provision is subsidised with a PSA subscription, as detailed below. The menu of support includes but is not limited to:

- ◆ A session for all stakeholders to establish or review their Christian 'Vision and Values', facilitated by a diocesan adviser
- ◆ A mid-cycle SIAMS health check, Deep Dives into RE and/or CW to support SIAMS evaluation, including written reports
- ◆ Working with a diocesan adviser to further develop strategies for progressive and effective RE
- ◆ Working with a diocesan adviser to develop the school's provision for collective worship
- ◆ Working with the school community to develop staff spiritual literacy, which enables children's spiritual encounter and development opportunities
- ◆ Working with your diocesan adviser to refine how your vision encourages good mental health and well being and the flourishing of all
- ◆ Support to ensure deeply Christian and effective Foundation Governance (e.g. reviews; mentoring)
- ◆ Preferential rate for academy conversion process

		Subsidised PSA/PCSF Cost	Unsubsidised Cost
Centrally provided in-person courses – listed in CPD overview	Twilight	£50+VAT	£100+VAT
	½ day course	£50+VAT	£100+VAT
	1 day course	£75+VAT	£150+VAT
Centrally provided virtual courses – listed in CPD overview	Twilight	£25+VAT	£50+VAT
	½ day course	£25+VAT	£50+VAT
	1 day course	£50+VAT	£100+VAT
Bespoke training – additionally requested training	Twilight (up to 2 hours)	£300 +VAT	£450+VAT
	½ day (up to 3 hours)	£375+VAT	£565+VAT
	1 day (up to 6 hours)	£675+VAT	£1025+VAT