

TWO TABLETS

# Loving God and your neighbour



What does it mean to love the Lord our God  
with all our heart, soul, mind and strength?

And what does it mean to love  
our neighbour as ourselves?

**Come and See this Lent.**

[oxford.anglican.org/come-and-see](http://oxford.anglican.org/come-and-see)

**COME  
AND  
SEE**

TWO TREES

# Bearing fruit in God's kingdom



What kind of fruit are you bearing at this  
stage of your life before God?

How are you responding to God's great love  
for you in Jesus Christ?

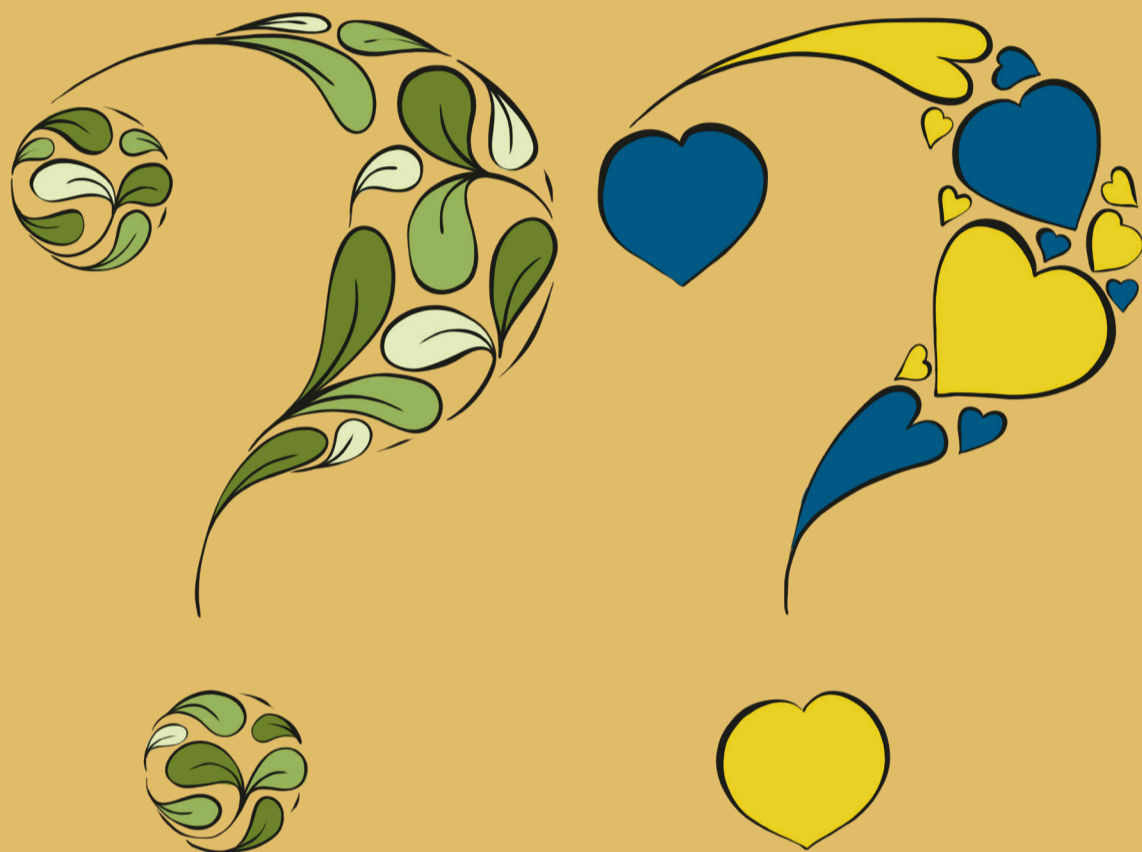
**Come and See this Lent.**

[oxford.anglican.org/come-and-see](http://oxford.anglican.org/come-and-see)

**COME  
AND  
SEE**

TWO QUESTIONS

# Go and do likewise



How are you called to love your neighbour?

How will you invest your talents  
and treasure across the whole span of  
your life to build God's kingdom?

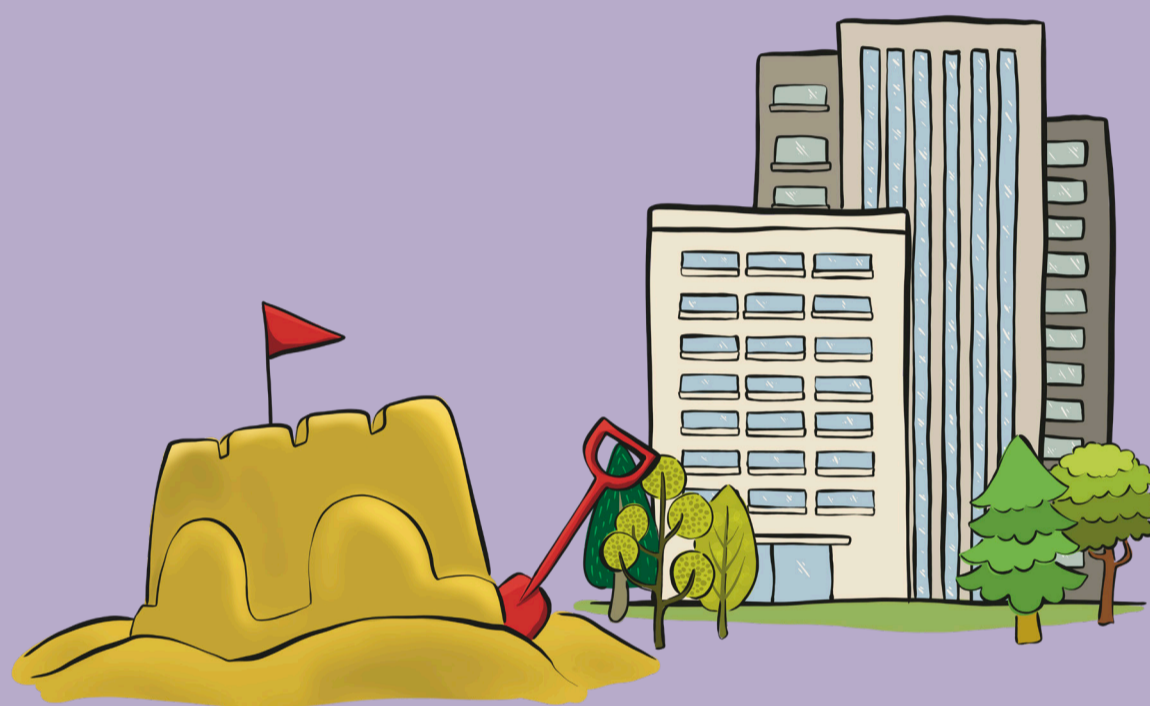
**Come and See this Lent.**

[oxford.anglican.org/come-and-see](https://oxford.anglican.org/come-and-see)

**COME  
AND  
SEE**

TWO HOUSES

# The foundation on which you build



Which kind of builder have you been in your life?

Which kind do you want to be in the future?

**Come and See this Lent.**

[oxford.anglican.org/come-and-see](http://oxford.anglican.org/come-and-see)

**COME  
AND  
SEE**

TWO TREASURES

# Found the treasure yet?



Jesus expects us to be full of joy when we do.

What is worth more than anything else?

**Come and See this Lent.**

[oxford.anglican.org/come-and-see](https://oxford.anglican.org/come-and-see)

COME  
AND  
SEE

TWO WAYS

# Where are you going?



We all face choices about the direction of our lives.

Are you choosing what's best?

**Come and See this Lent.**

[oxford.anglican.org/come-and-see](https://oxford.anglican.org/come-and-see)

**COME  
AND  
SEE**