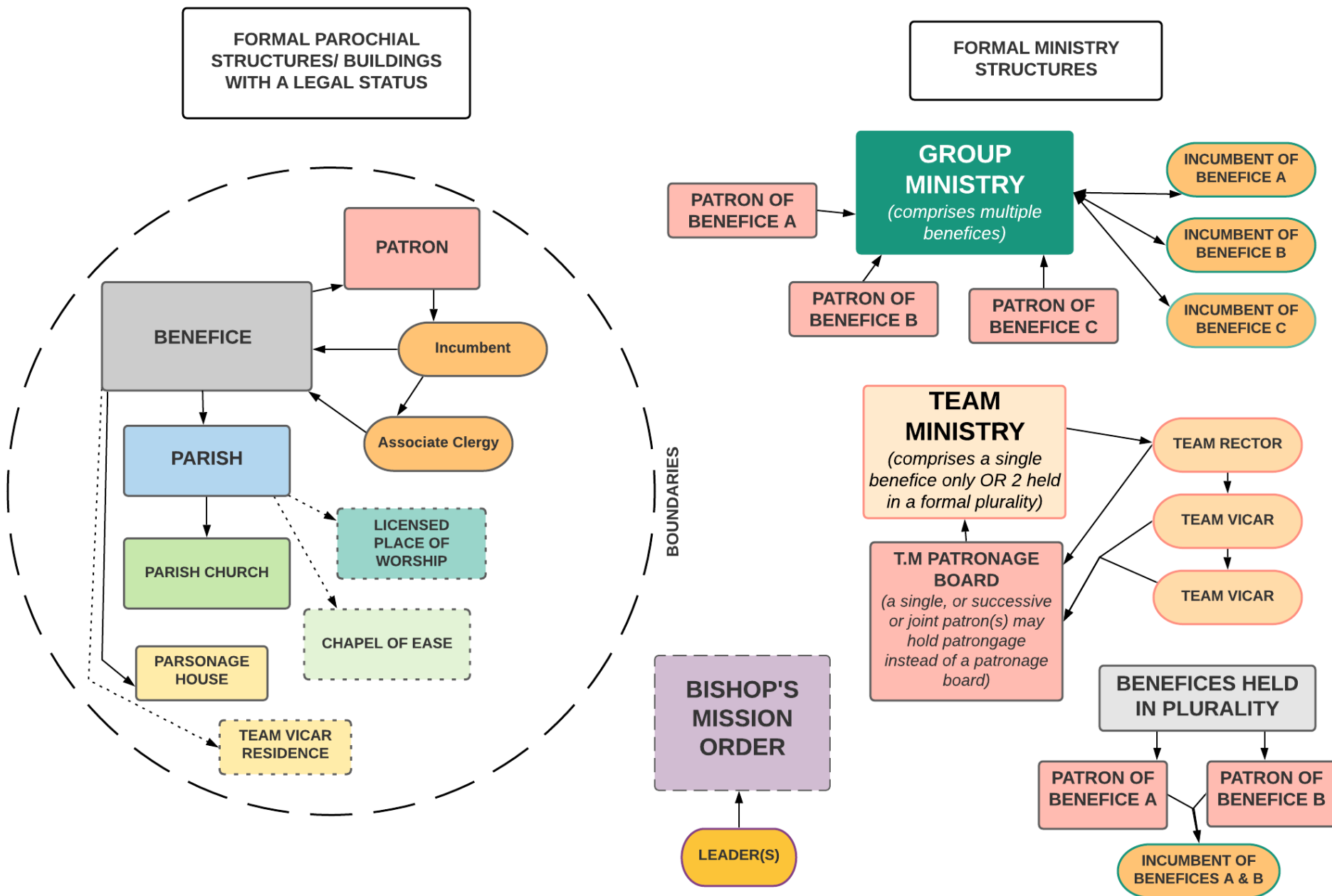


Visual Guide to Pastoral Reorganisation



All of these elements are enshrined in law as set out in the *Mission & Pastoral Measure 2011*. Formal changes to these elements must be made by following a legal process, either through a Pastoral [Church Buildings] Scheme; a shortened Pastoral Order; a Bishop's Pastoral Order (aka a BPO); or a Bishop's Mission Order (aka a BMO). Consultation with those most closely affected ('the Interested Parties') and with the Diocesan (Archdeaconry) Mission & Pastoral Committee is required as part of this process. N.B New ministry and collaborative working arrangements may be explored on an informal basis with the support of the Archdeacon and their Team.