

Diocesan SIAMS Leads Briefing

Dr Margaret James | National Director of SIAMS
David Tait | Deputy Director of SIAMS

Thursday 5 May 2022



THE CHURCH
OF ENGLAND
EDUCATION OFFICE

Welcome



THE CHURCH
OF ENGLAND
EDUCATION OFFICE

Meet the SIAMS team



Margaret James
National Director of SIAMS



David Tait
Deputy Head of SIAMS



Anna Blacknell
SIAMS Systems and Data Officer

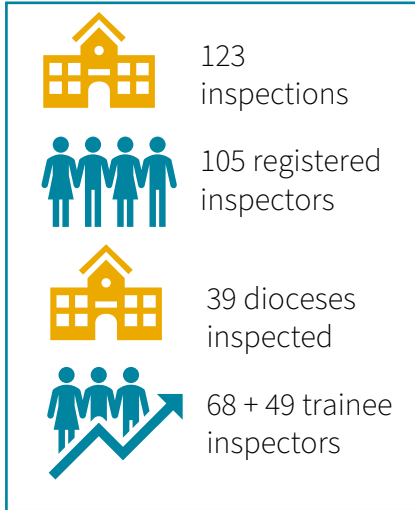


Natasha Skinner
SIAMS Admin Officer



Jan Chandler
SIAMS Management and
Training Officer

SIAMS Data – Updated April 2022

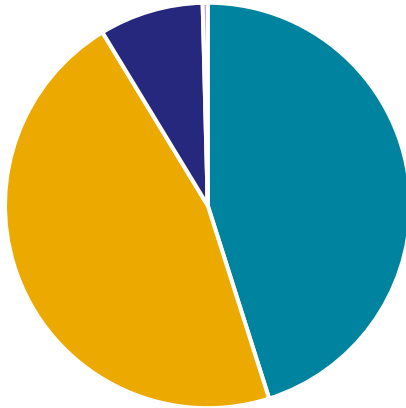


So far this year, SIAMS inspections have taken place in:

- 63 Church of England VC Primary schools
- 52 Church of England VA Primary schools
- 6 Church of England VA Secondary schools
- 1 Methodist Primary school
- 1 Joint Church of England/Methodist Primary school

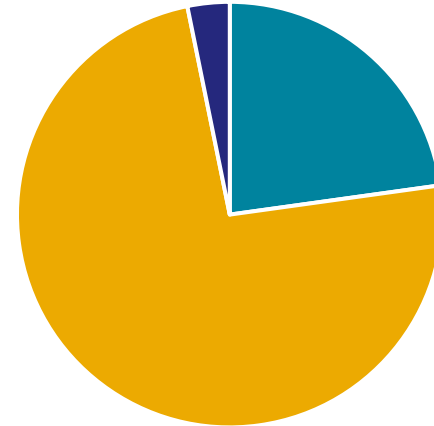
SIAMS overall grades pre and post national integration

Pre national integration



■ Excellent 45.1% ■ Good 46.2%
■ RI 8.3% ■ Ineffective 0.4%

Post national integration



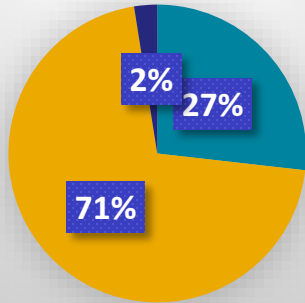
■ Excellent 22.8% ■ Good 74% ■ RI 3.2%

Commentary

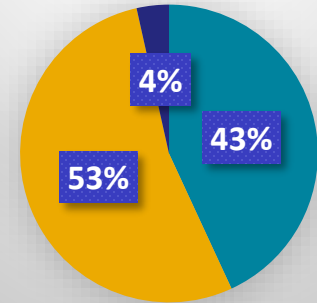
- Small sample size – treat with caution
- Excellent grades – halved since national integration
 - Clarification on Excellent?
 - Refresher training?
 - QA systems?
- Combined Excellent + Good – 5% higher
 - Positive impact of Christian vision?
 - Diocesan training?

SIAMS Grades 2021-2022

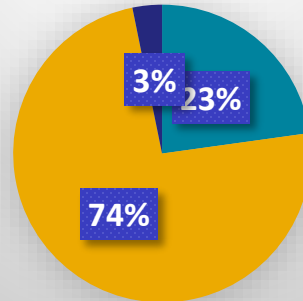
Collective Worship



RE VA only (58)



Overall grades

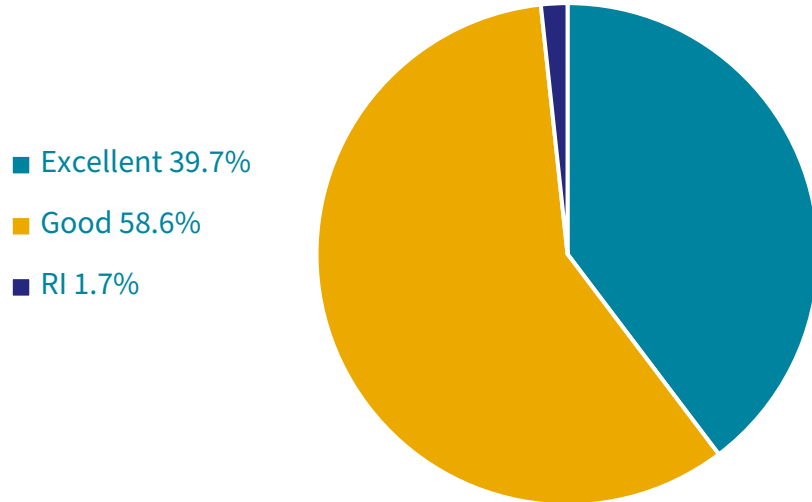


Commentary

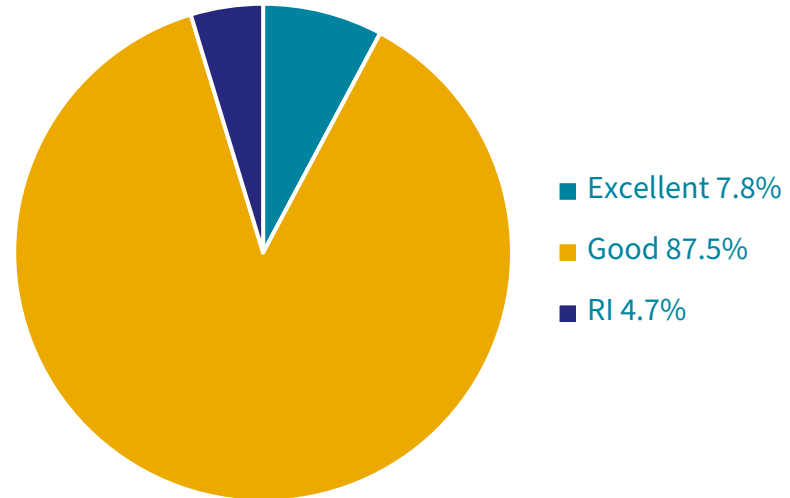
- Collective worship grades reasonably similar to overall but note the slightly lower number of Excellent grades for worship
- Combined Excellent and Good for worship is 1% higher than for Overall
- RE grades (VA only) for Excellent are 43% compared to 27% and 23% for cw and overall respectively
- Yet RE combined Excellent and Good are correspondingly 2% and 1% lower

VA and VC schools

VA Schools



VC Schools



Commentary

- Excellent VA – 39.7%; Excellent VC – 7.8% - striking disparity
- RI VA – 1.7%; RI VC – 4.7%

Website and Policy Updates

- Covid policy has been amended to reflect national policies/guidelines on testing.
- Website awaiting updates
- SEF – 2-page summary requested by inspectors before the inspection
- Notifications – bank holidays are treated as non-working days so schools will receive an extra day's notice if relevant.

Diocesan intelligence

- Invaluable – thank you
- Deferrals, illness, leadership etc
- New schools – please let us know if any new Church schools are opened.
- Academy conversions – as above.
- We will request updated data from all dioceses before September.

Appeals and Complaints

- Excellent – lack of shared understanding of what this grade means
- Inspector conduct and protocols
- Adjudication fee – charged to the school if an appeal/complaint is not upheld.
- Parent complaints – we acknowledge them but cannot get involved.

Deferrals

- Policy sets out criteria
- Impact of Covid
- ‘Soft’ intelligence means we can be proactive
- Not all requests can be granted

Data from September 2022

- Strand seven – VA only

As a result of the rich and engaging RE curriculum, which reflects and takes account of up-to-date thinking and developments in the subject, teaching and learning is consistently graded good through regular school monitoring (verified at inspection). **Based on the data available at the time of inspection and paying due regard to context, pupils make good progress against local expectations (KS1-3) and national averages for GCSE.** This includes pupils with SEND and the most able. As a priority, the school is enabling its vulnerable pupils, including those with learning difficulties, to flourish in their RE learning.

Data from September 2022

- Strand two

Based on national assessments available at the time of the inspection, progress information provided by the school and paying due regard to context, the school is at least in line with national averages in progress statistics. School leaders and teachers explain how the Christian vision underpins curriculum decisions and ways in which learning is fostered, and they illustrate the positive impact that these decisions have on children and young people's learning and development. This includes pupils with special educational needs and disability (SEND) and the most able. As a priority, the school is enabling its vulnerable pupils, including those with learning difficulties, and those who experience barriers when accessing remote learning, to flourish and make progress in their learning.

The List

- The 'List' – will be updated in the Summer/July and will include all schools that we expect to inspect in the academic year 2022-2023 ie September '22 – July '23.
- We will send it to DDEs and SIAMS Leads for an accuracy check before releasing it to schools/publicly.
- The List will continue to be published annually indefinitely.

Quality Assurance of Inspection Practice (QAI)

- All registered inspectors will be subject to QAI over the coming years.
- This information will be included in the notification call to the school when relevant.
- The QA inspector will not inspect the school; they will observe the practice of the inspector.
- No schools will be inspected by two inspectors.
- QAI will address the inspector competencies, including adherence to national protocols.

Joint CE/RC schools

- None have been inspected this year.
- A small number (approx. 2) are due in 2022-23.
- These will be done under the RC new national framework. I will contact DDEs for whom this is relevant and discuss the protocols.
- A joint framework/approach should be in place for September 2023.

Miscellaneous

- Reports will be published on the SIAMS website as soon as we have the facility to do so. In the meantime, they will NOT be uploaded to A Church Near You. Please publish them on your diocesan website and ask schools to publish on theirs.
- Newsletter – will be going out on Friday 6 May. Please contact Jan if you do not receive it by the start of next week and would like to be added to the circulation list.

Dates of Future Inspector Briefings

- Wednesday 15 June, 11am -12.30pm
 - Wednesday 15 June, 2pm – 3.30pm
- Via Zoom and details will follow nearer to the time.
 - Important developments to be outlined in June
 - Inspectors, trainee inspectors, DDEs, diocesan SIAMS Leads

Do you have any questions?



THE CHURCH
OF ENGLAND
EDUCATION OFFICE