



The Diocese of Rochester's

# COMMON FUND

*one mission, many places*

## What is the Common Fund?

The Common Fund is the common pot of money paid into by congregations across the Diocese.

It is used to provide and support ministers, and to further the work of the Church in every parish, across Medway, north and west Kent and the London Boroughs of Bromley and Bexley.

The Diocese is a wonderfully diverse and vibrant community of faith, with each parish facing different challenges and needs.

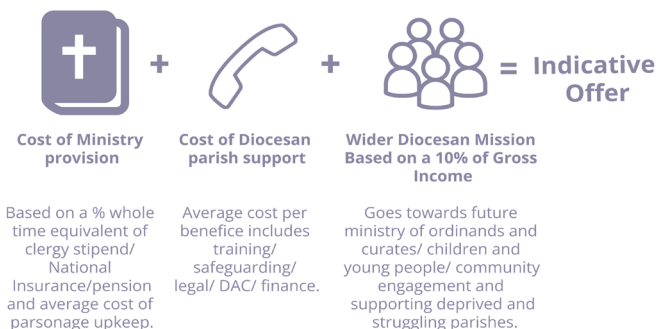
Our shared Called Together vision expresses our ambition to meet these challenges as a family of faith, supporting each other as we seek to grow disciples, enrich communities and resource our mission and ministry.

The Common Fund helps us realise this ambition. It means every contribution matters.

## How does it work?

In 2019, our Diocesan Synod - the decision-making body of the Diocese - agreed to introduce a system which uses a common formula to calculate a fair and reasonable amount a parish can contribute to the Common Fund.

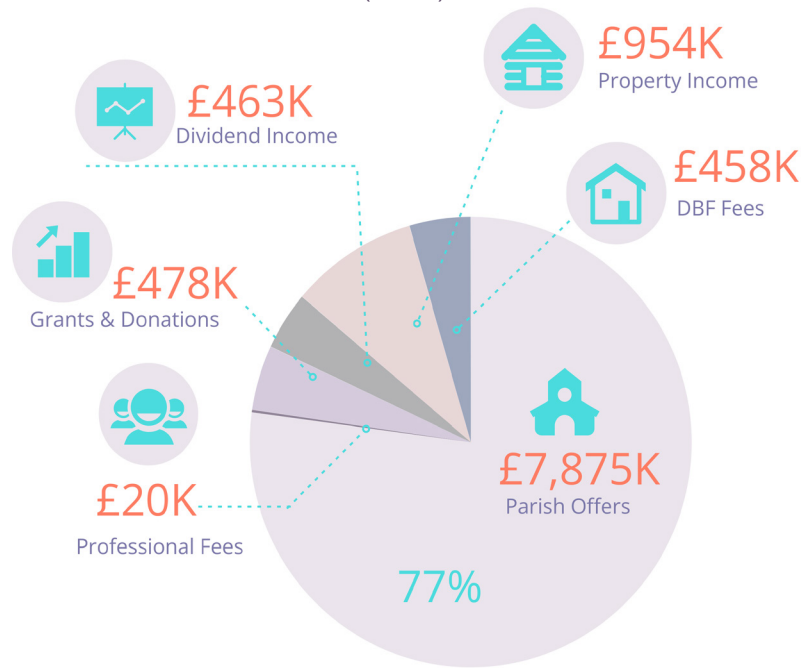
It is called the Indicative Offer. This is calculated to the formula below to enable each benefice to prayerfully make a fair and generous offer.



\* For 2022, the Ministry Cost for a housed full-time incumbent is £43,940 and the Diocesan Support Costs for a benefice is £12,148.

## What is our income?

Total income: £10.2M (2021)



## Why do we do this?

The Diocese does not receive any funding from the government and contributes to the National Church, so we must raise everything we spend ourselves.

By giving into the Common Fund, we are embodying biblical principles and the generosity at the heart of the first Christian communities.

This is not about paying-in to get back what you need but giving because of a shared sense of responsibility to everyone in our Church family, so that all can flourish.

*"All the believers were together and had everything in common. They sold property and possessions and gave to everyone in need."*

# The Diocese of Rochester's COMMON FUND

one mission, many places

Your generosity enables us to grow.

Thank you.

By giving in this way it means we can:

- have a stable platform from which to grow,
- support those parishes who are in need, and
- maintain a presence in every community.

It ensures that every parish, rich or poor, urban or rural, can live out one mission, in many places.

Below is a snapshot of the life of the Diocese, which would not be supported without the Common Fund.

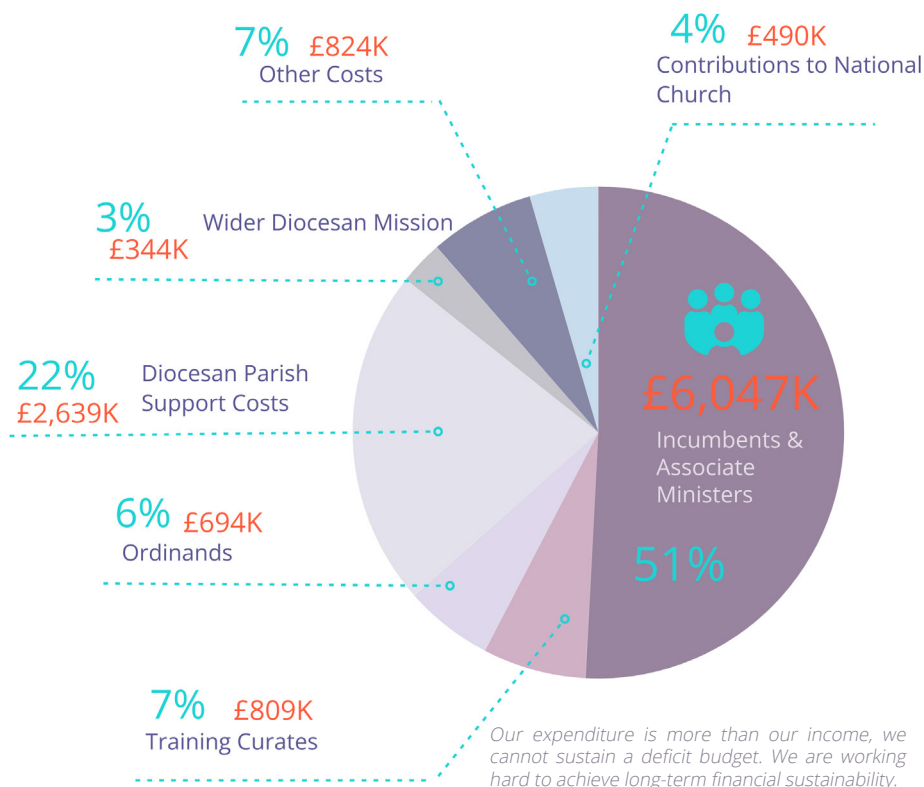


*'In the climate of a cost-of-living crisis, riding in on the back of a pandemic, communities such as ours have been hit terribly hard. We seek to serve as best we can... This is only possible because the Diocese has the bigger picture and because the Common Fund exists to support our mission and outreach.'*

The Rev Mandy Young,  
Priest-in-Charge to St Alban and St Edmund, Dartford

## How your money is spent

Total cost: £11.8M (2021)



## Contact:

For more detailed information about the Common Fund visit: [www.rochester.anglican.org/about-us/howwearefunded/](http://www.rochester.anglican.org/about-us/howwearefunded/)

You can contact the Finance Team on: [finance@rochester.anglican.org](mailto:finance@rochester.anglican.org)

## Prayer

Lord, you have entrusted us with the fullness of all that you have given and empowered us with the presence of your Holy Spirit: grant to us joy in our stewardship, generosity in our giving, trust in your promises, and confidence in Christ when our deeds are judged; through Jesus Christ, our Lord. Amen.

from Giving in Grace



Diocese of Rochester  
called together