

## Helpful Geography Websites

Here are a few websites which are useful to use when we are learning about geographical features, places and the wider world.

### Digimaps for school

I would say that this is probably aimed at Key Stage 2 pupils, but pupils in Key Stage 1 might enjoy looking for their house and school.

<https://digimapforschools.edina.ac.uk/>

We have signed up for this software recently so it is new to all of us so this will be a new piece of software for our pupils. It is an online mapping tool which can be used to find and compare locations around the world.

These are the login credential for our school

username: SY58JN

password: shiped3513

Once you are logged on you can put your postcode into the top left box and zoom in to see you house on an ordinance survey. To change the view to photographs you change this using the 'map selector' and the slider (on the left of the screen). There are some general instructions on the next page.

I have been assured (fingers crossed) that we cannot break it!

Other interesting places to visit on Digimaps are football stadiums, an airport (Heathrow is good one to view), historical places such as castles and palaces.

Use can measure both distance and area using the 'measurement tool' (there is an example on the next page)

Please have an explore of this software, hopefully we will use it a lot once we return to school.

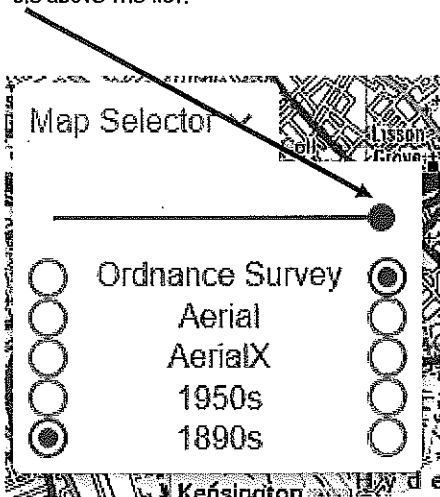
# Digimap for Schools

## The Interface

The image below presents the new Digimap for Schools interface. This interface is more accessible and contains more features than previous versions. Each section below is further explained in sequence as you progress through this document.

| No | Feature Name           |
|----|------------------------|
| 1  | Search                 |
| 2  | Locate my position     |
| 3  | Print                  |
| 4  | Aerial map information |
| 5  | Start Again            |
| 6  | Map Selector           |
| 7  | Additional Information |
| 8  | Zoom to Area           |
| 9  | Zoom Bar               |
| 10 | Zoom to Max Extent     |
| 11 | Expand Sidebar         |
| 12 | Collapse Sidebar       |
| 13 | Map Information        |
| 14 | Image Search           |
| 15 | Add your own data      |
| 16 | Measurement Tools      |
| 17 | Overlays               |
| 18 | Saved Maps             |
| 19 | Key                    |
| 20 | Drawing Tools          |

To change the type of map that you are looking at click on this. You can alternate between two maps by dragging the green circle above the list.



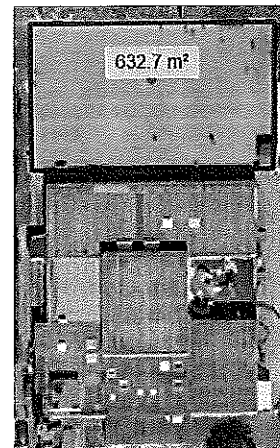
**Measurement Tools**

- Distance
- Area
- Delete measurements

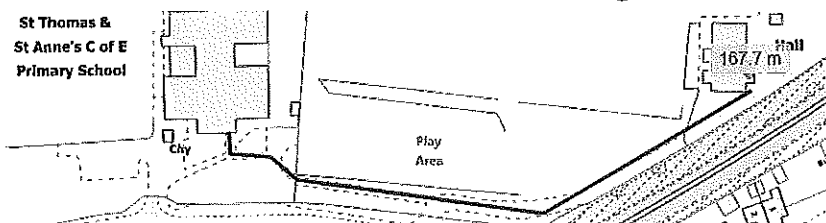
**Delete all**

**Measure distance/area:**

- Click to start measuring; shift click and hold to measure freehand.
- Use Ctrl-Z or ⌘-Z to undo the last point.
- Double-click to stop measuring; release mouse button to finish freehand measuring.



Measuring the area of the playground using the measuring tool.



Measuring distance using the same tool. What is the distance from your house to the school?

<https://digimapforschools.edina.ac.uk/files/DFSV2Guide.pdf>

This a link to more detailed guidance should you want to explore digimaps more.

## National Geographic for Kids

Provides lots of information about areas of the world.

<https://www.natgeokids.com/uk/category/discover/geography/>

## Oak National Academy

Geography lessons are added regularly (but not weekly). It would be worth having a look at the lessons that they are producing.

<https://www.thenational.academy/online-classroom/schedule/#schedule>

## BBC Bitesize

Daily geography lessons which cover a range of geography skills and knowledge

<https://www.bbc.co.uk/bitesize/subjects/z2f3cdm>

Have a look, have a play just explore!

Miss Garbett