

Welcome to The Cotteridge Church

Sunday 18th July Proper 11

"The calling of The Cotteridge Church is to respond to the Gospel of God's love in Christ and to live out its discipleship in worship and mission."

Generous God,
you give us gifts and make them grow:
though our faith is small as a mustard seed
make it grow to your glory
and the flourishing of your kingdom;
through Jesus Christ our Lord. Amen.

Services today

10.30 Morning Worship Evelyn Bhajan

2 Samuel 7:1-14a Psalm 89:20-37 • Jeremiah 23:1-6
Ephesians 2:11-22 • Mark 6:30-34, 53-56

Prayer Column

We pray for our pastoral links:

Doris Collins: with Carole Allen, Clive Babb, Helen Bentley, Jean Buttery, Sheila Coward, Jenny Fryer, Alison and Steve Miller, and Hazel Nash.

Jennifer Moore: with Lorna Babb, Gill Brettell, Myra Dean, Linda and Norman Mann, and Stephanie Rooker.

We pray for those who are housebound and those in long term need : Jackie Jones, Moira Jones, Joan Clayton, Gill and Len Salkeld and Rod Simkin, Myra Dean, Moira Jones, Chris Moore,

We pray for those who are ill or are in particular need of prayer: -Megan, Vinnie Holliday, Stephnie Kelly, Chris Pascal, Jennifer Moore, Mark Tigwell, Keith, Robin, Janet and family. Shirley, Jenny Fryer Irene Spooner

We remember those who have died:

Events this Week

Monday – Friday

8.30 – 1.00 Coffee Bar now open

Monday 19th 7.30 Ben's Drama Group

Tuesday 20th 7.30 Ben@s Drama Group

Wednesday 21st 7:30 Worship on Zoom

Services next SUNDAY

Sunday 25th July 2021 PROPER 12

10.00 Reflection you tube

10.30 **Holy Communion Barbara Calvert**

noon zoom coffee

Interim editor for the notice sheet is

revroger.collins@thecotteridgechurch.org.uk

GUIDANCE ON LEAVING THE CHURCH

Please remain seated at the end of the service until the steward directs you to leave. Thank you

Praying through Change

10.30am on July 27th August 10th, 24th

Traidcraft at COTTERIDGE



**Doublechocolate
Chunk, Stem
Ginger, Fruit &
Oat cookies
DRIED MANGO
NOW HALF
PRICE £1.50**

ORDERS PLEASE TO Jane 07800815074 or Roger on 07721 526854 Delivery service available.

60 60 60 VaccinAid challenge In the 60 days before her 60th birthday, Pam Waddell is running 6x 10km runs (hopefully each in less than 60 minutes) for UNICEF's VaccinAid appeal. If you would like to sponsor her, please do so online at <https://www.vaccinaid.org/60-60-60-challenge>. Every contribution will help UNICEF to deliver 2 billion Covid vaccines, as well as treatments, around the World this year.

On Thursday, August 19th at 2 pm I am going to Brave the Shave to raise money for Macmillan Nurses. If you would be able to sponsor me I would be very grateful. Every penny counts. The "event" will take place in the grounds of Beaumont Park. Thank you Rita Sutton

Church Administer David Pycoc is retiring at the end of July. If you would like to contribute towards a retirement gift please let us have it before the end of July.

Invitation to join the SPARK monthly discussion group

We are planning to run two small groups from September, meeting on the first Sunday evening of the month: one group at the church and one in members' homes (subject to the easing of restrictions). Both groups will follow a Bible study discussion course based on the film 'I Daniel Blake'. We hope to plan some joint meetings too. Come along to explore your beliefs and faith in action in an open and trusting environment and get to know your fellow church-goers! More information can be found in the July edition of Roundabout. If you are interested in joining one of the groups, please contact Jane Stephens (jane.stephens@thecotteridgechurch.org.uk or 07800 815074) or Pam Waddell (pam.waddell@thecotteridgechurch.org.uk) and let us know your preference for the home or church based group.

UPDATE 10th JULY



Bridget



Pam



Sharon Featherstone RD



Jill King Edward School

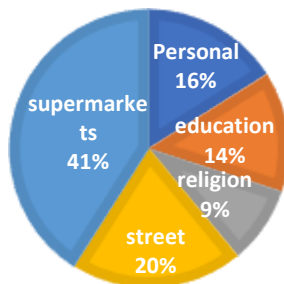
Jill retires from King Edward School having brought 878k of food to the foodbank through donations from school Last Week

We received in donations 1632k Thanks to Water Mill JI for their donation of 82k

We gave out 1766k , 1303k to 124 clients on 67 vouchers and 266k to other food banks or similar

DONATION LAST WEEK

Personal education religion street supermarkets



B30 Foodbank Warehouse has got some supplies of bread flour (mostly strong white flour), bread machine mixes and also a small amount of dried yeast. We cannot give it to clients, as many lack the utensils, etc to make it at home (and the oven fuel to cook it). If anyone would like to exchange flour/yeast for something on our urgent list, you would be most welcome.

Clients needing emergency food are referred to B30Foodbank by E-Voucher through a referral agent
OR call CITIZENS ADVICE 08082082138 Or call
BIRMINGHAM CITY COUNCIL on 0121 216
3030 Or call The Project on 0121 453 0606 Whats App

07974 106813

Distribution of food Clients or their representatives will need to collect the parcels from B30Foodbank, Quaker Friends Meeting House 23aWatford Road B30 1JB on Tuesday and Friday between 1.30 and 3.30pm.

Street donations from , Featherstone Rd Franklin Rd, Selly Park, Third Avd, **urgently needed**

Instant coffee (not decaffeinated), tinned fish (not tuna, sugar 500g (not larger), chocolate and snack bars, potato smash, gender neutral shampoo, roll-on deodorant, disposable razors, strong carrier bags.

Low in stock

Tinned meat (ham, corned beef, pork sandwich meat, pulled pork or chicken), ready-made custard (tinned or carton - not powder), packet/pot noodles, pasta sauces, tinned tomatoes, tinned rice pudding, jam/honey, long life fruit juice; tinned fruit in juice (not prunes or grapefruit), crisps, washing up liquid (not family sized bottles), laundry liquid/powder (not family sized), toilet rolls.

Well stocked

UHT milks, squash, instant hot chocolate (not cocoa powder), baked beans, pasta shapes, dry spaghetti, tinned macaroni cheese, tinned spaghetti, tinned/packet sou, rice, tinned potatoes, tinned vegetables, tinned tuna, teabags (40's or 80's), biscuits, nappies all sizes, porridge, cereal, pet food, baby food and baby care items, gender neutral shower gel, sanitary pads, liquid or bar soap, toothpaste, single or duo wrapped toothbrushes

Not needed at all

Decaffeinated drinks or fruit infusions, bottled water, large bottles of lemonade or coke, any foods or toiletries containing alcohol, cooking ingredients or sauces, fresh products including vegetables, meat, eggs and bread, non-dairy items, gluten-free items, coffee beans, loose tea, large boxes of teabags (120's or more), very large bags or boxes of cereal or porridge, cocoa powder, tampons, make-up, hair accessories, perfume or after-shave. B30 FOODBANK Cotteridge Church, 24 Pershore Road South info@b30foodbank.org.uk

07582 14397 information and clients 07985 629201 collection

foodbank Redemption Media and then open B30

Warehousing: Warehouse, is at 17 Castle Rd, Kings Norton Business Park, B30 3HZ. 2.00-4.00 on Tuesday and Friday. B30 Foodbank, The B30 Foodbank is part of the Trussell Trust's UK-wide foodbanks