

# Overview

## KS2 Attainment 2019 · Actual results

23 pupils

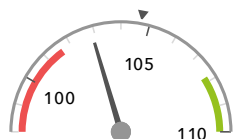
Average Scaled Score (Re, Ma)

% Expected standard+ (Re, Wr, Ma)

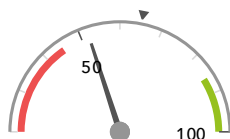
DFE

102.9

52%



In line with the national average (104.7) ◀



In line with the national average (65%) ◀

## KS2 Progress 2019 · Value Added

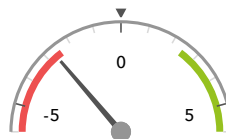
19 matched pupils

Average Scaled Score (Re, Ma)

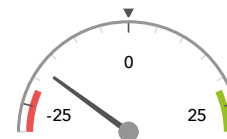
% Expected standard+ (Re, Wr, Ma)

-2.7

-18%



Significantly below the national average (0) ◀



In line with the national average (0%) ◀

## KS2 higher and lower performing pupil groups 2019

Minimum group size: 5

	Higher performing	Lower performing
<b>Overall achievement</b> pupil progress		Joined before Y5 (5) ⚠ SEN Support (6) Autumn Term (9)
<b>KS2 reading achievement</b> pupil progress	Joined in Y5 or Y6 (14) Summer Term (6) Middle attainers (11)	Joined before Y5 (5) Autumn Term (9) Higher attainers (8)
<b>KS2 writing achievement</b> pupil progress		Joined before Y5 (5) SEN Support (6) Summer Term (6)
<b>KS2 mathematics achievement</b> pupil progress		Joined before Y5 (5) ⚠ SEN Support (6) ⚠ Summer Term (6) ⚠
<b>KS2 grammar, punctuation &amp; spelling achievement</b> pupil progress		Joined before Y5 (5) SEN Support (6) Male (6)

### Census information

KS2's latest academic year uses the Spring 2019 DfE census. Earlier years use that year's Spring census – [learn more](#) · [See recent Aspire updates](#)