

Overview

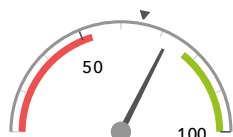
KS1 Attainment 2019 · Actual results

60 pupils

% Expected Standard + (Re, Wr, Ma)

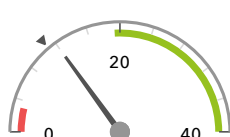
% Higher Standard (Re, Wr, Ma)

72%



In line with the national average (65%) ◀

12%



In line with the national average (11%) ◀

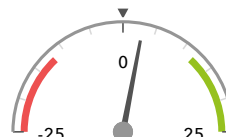
KS1 Progress 2019 · Value Added

60 matched pupils

% Expected Standard + (Re, Wr, Ma)

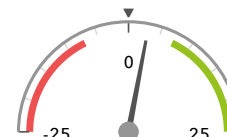
% Higher Standard (Re, Wr, Ma)

+3%



In line with the national average (0%) ◀

+3%



In line with the national average (0%) ◀

KS1 higher and lower performing pupil groups 2019

Minimum group size: 5

	Higher performing	Lower performing
Overall achievement pupil progress	First language not English (8) Higher attainers (20) FSM (7)	Middle attainers (25) Summer Term (22) SEN Support (13)
KS1 reading achievement pupil progress	First language not English (8) FSM (7) FSM (in last 6 years) (7)	Middle attainers (25) Summer Term (22) SEN Support (13)
KS1 writing achievement pupil progress	First language not English (8) Higher attainers (20) Autumn Term (17)	Middle attainers (25) SEN Support (13)
KS1 mathematics achievement pupil progress	First language not English (8) FSM (7) FSM (in last 6 years) (7)	Summer Term (22) Lower attainers (15) SEN Support (13)

Census information

KS1's latest academic year uses the Spring 2019 DfE census. Earlier years use that year's Spring census – [learn more](#) · [See recent Aspire updates](#)