

## Overview

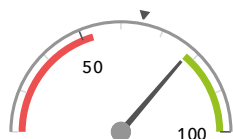
### KS1 Attainment 2018 · Actual results

58 pupils

% Expected Standard + (Re, Wr, Ma)

% Higher Standard (Re, Wr, Ma)

78%



In line with the national average (65%) ◀

17%



In line with the national average (12%) ◀

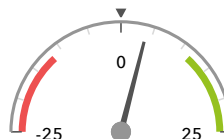
### KS1 Progress 2018 · Value Added

57 matched pupils

% Expected Standard + (Re, Wr, Ma)

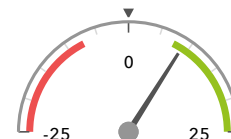
% Higher Standard (Re, Wr, Ma)

+4%



In line with the national average (0%) ◀

+9%+



Significantly above the national average (0%) ◀

### KS1 higher and lower performing pupil groups 2018

Minimum group size: 5

	Higher performing	Lower performing
<b>Overall achievement</b> pupil progress	First language not English (6) ↑ Lower attainers (9) Higher attainers (20) ⊕	Middle attainers (28)
<b>KS1 reading achievement</b> pupil progress	First language not English (6) Lower attainers (9) Higher attainers (20)	Middle attainers (28)
<b>KS1 writing achievement</b> pupil progress	First language not English (6) Higher attainers (20) Lower attainers (9)	
<b>KS1 mathematics achievement</b> pupil progress	First language not English (6) Higher attainers (20) Autumn Term (18)	Summer Term (19) Middle attainers (28)

### Census information

KS1's latest academic year uses the Spring 2019 DfE census. Earlier years use that year's Spring census – [learn more](#) · [See recent Aspire updates](#)