

Overview

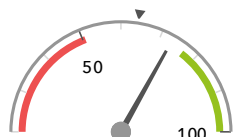
KS1 Attainment 2017 · Actual results

55 pupils

% Expected Standard + (Re, Wr, Ma)

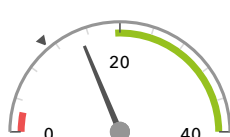
% Higher Standard (Re, Wr, Ma)

73%



In line with the national average (64%) ◀

15%



In line with the national average (11%) ◀

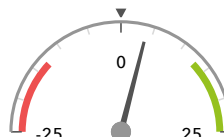
KS1 Progress 2017 · Value Added

50 matched pupils

% Expected Standard + (Re, Wr, Ma)

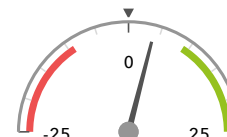
% Higher Standard (Re, Wr, Ma)

+4%



In line with the national average (0%) ◀

+4%



In line with the national average (0%) ◀

KS1 higher and lower performing pupil groups 2017

Minimum group size: 5

	Higher performing	Lower performing
Overall achievement pupil progress	Female (25) Autumn Term (20) Higher attainers (19)	Spring Term (17) Male (25) Lower attainers (9)
KS1 reading achievement pupil progress	Autumn Term (20) Female (25) First language not English (7)	Spring Term (17) Male (25) Lower attainers (9)
KS1 writing achievement pupil progress	Higher attainers (19) Female (25) Autumn Term (20)	Lower attainers (9) Male (25) Spring Term (17)
KS1 mathematics achievement pupil progress	Higher attainers (19) Female (25) Autumn Term (20)	Spring Term (17) Male (25) Middle attainers (22)

Census information

KS1's latest academic year uses the Spring 2019 DfE census. Earlier years use that year's Spring census – [learn more](#) · [See recent Aspire updates](#)