

The Sexton's Wheel Issue 218

The magazine for Long Stratton & Wacton



March 2022

Long Stratton Village Hall - Booking Information



The hall can be booked as follows:

Via our facebook page, search Long Stratton Village Hall

Via our website www.longstrattonvillagehall.org.uk

Email us at longstrattonvillagehall@outlook.com

Call Kirsty Dye on 07986942804 and leave a message

Hire rates from as little as £7.50 per hour.



Wacton Village Hall - Booking Information

Attractive and welcoming community space available for hire: hall or meeting room

Hire rates start at £6.00 per hour. To book go to wactonvillagehall.co.uk

Email: bookings@wactonvillagehall.co.uk, or Tel: **Angie Baldwin 01508 536639**

Church Contacts

St Mary's Chrissy Briggs - (01508) 536724

St Michael's Rosemary Bennett - (01508) 530296

All Saints' Angie Baldwin (01508) 536639

Congregational Church June Braddock (01508) 470701

Church Parish Office

Due to current restrictions the Parish Office is not open. The Parish Administrator, Marianne, can be contacted on LSTpilgrimteam@outlook.com

If you know of anyone who is unwell or would benefit from a visit from a member of our ministry team, please contact the team vicar: Revd. John Madinda on 01953 789240.

Long Stratton Town Council, The Pavilion, Manor Road, Long Stratton

Usual office hours are Monday, Tuesday and Thursday between 10am and 1pm and by appointment at other times.

Tel: Clerk Becky Buck 01508 530524 E-mail: clerk@longstrattoncouncil.info

The Editors reserve the right to edit or decline any material submitted for publication. While every effort is made to ensure that the contents of the magazine are accurate, no responsibility can be taken for errors and omissions. The material printed does not necessarily represent the views of the magazine committee and no recommendation of products or services is implied. While the committee take reasonable care when accepting advertisements for publication, it cannot accept responsibility for any unsatisfactory transactions. Errors and omissions excepted.



With spring round the corner and better weather to come (we hope) and restrictions lifting, let's all keep remaining safe.

The Sexton's Wheel Team

- | | |
|---|---|
| 2. Booking information Long Stratton & Wacton Village Halls.
Church Contacts.
LSTC opening hours. | 33. Tharston and District W.I.
Thursday Club. |
| 5. The Sceptical Environmentalist
Delivering Sexton's Wheel. | 35. Wacton Footcare.
Wacton Coffee Mornings. |
| 7. 1st Long Stratton Scouts | 36. Teachers Hutchinson.. |
| 9. Long Stratton Guides and Brownies. | 37. Prayer Shawl Ministry |
| 10. Long Stratton W.I.
LSHS Job Advert. | 39. Wacton church coffee morning.
Carleton Road Jubilee Hall |
| 11. Outline of our Village Past.
The Manor House | 40. Local Walk, Snowdrops and Castles. |
| 22. Wacton community Quilt Challenge. | 41. Long Stratton Library. |
| 23. Long Stratton Medical Partnership. | 42. Church Services.
From the Parish Register. |
| 24. Borderhoppa
Messy Church
Let's Chat. | 43. Contact details & information on
the Sexton's Wheel. |
| 25. Long Stratton Town Council.
Girls Night Out. | |
| 30. Early Childhood Family Service. | |

HOMEFRONT

*Handyman Maintenance
Services*

- Bathroom & Kitchen refurbishment
- Painting & Decorating
- Plaster Repairs
- Carpentry
- Plumbing
- Disabled Access work
- Garden Services

John Johnson

01508 531021 • 07958 606637
johnnyxj@yahoo.com

KENT SKIPS

WE COVER SOUTH NORFOLK & NORTH SUFFOLK

*** PROMPT & RELIABLE SERVICE**

*** NEXT DAY DELIVERY**

*** LARGE OR SMALL LOADS**



Yew Tree Farm, Pulham Market, Diss, Norfolk, IP21 4XN

info@kentskips.com
www.kentskips.com



**Richard
Walpole
Roofing**



- New Roofs
 - Re Roofs
 - Roof Repairs
 - Leadwork
 - Chimneys Repointed
 - Fascia, Soffit and Guttering
- FULLY INSURED**

Contact Richard on
07747 784742



*Beautifully
Balanced*

Your Health & Wellbeing starts
with taking care of you

Yoga can help with

- Strength, Flexibility and Mind-Body Awareness
- Physical Ailments, Recovery from Illness or Injury
- Weight Loss, Stress, Anxiety, Depression and Sleep Problems

Zoom Classes available for any age, any ability

Email hellen@beautifullybalanced.today or,
WhatsApp 07714700606

The sceptical environmentalist

Not long ago I read a book by Bjorn Lomborg with the title, “The Sceptical Environmentalist”. The title speaks for itself and I suppose there are many people like Bjorn who even today see the environmental crisis as a right wing invention of people seeking attention and therefore using a language of exaggeration and scaremongering. The book is taking into account the argument that most of the loud voices in addressing the environmental issues come from people who are neither scientists nor environmental experts, but rather publicity is being sought by entertainers and extreme activists. When scientists and experts spoke about it Bjorn still remains sceptical because as an observer who depends on coming to a conclusion by following what he observes and what appears to be plain, while scientific data appears being far fetched. He even challenges the statistics used as those seeming to be displayed to suit an agenda. So the sceptical environmentalist was sceptical towards statistics too, considering the fact that in order to prove a scientific fact you need scientific evidence, and so he was not convinced. Bjorn Lomborg therefore concluded in his book that by looking at his own statistics two things are happening simultaneously. [1] Air in the developed world is becoming less polluted and [2] People in the developing world are starving less. Therefore he named the introductory chapter regarding the state of the world as “Things are getting better”. With the book first published in 2001, Bjorn Lomborg’s scepticism could not have been better challenged and proved wrong as we see the state of the environment today. Today we are not only talking about metaphysics or microscopic science but even a lay observer can see that things are not getting better as stated in that book. In our own garden at the rectory in the last few years the small number of hedge sparrows I frequently enjoyed watching at the bird tables, the starlings on the roof and the occasional nuthatch have disappeared. In recent years we have seen rise to new proportions of temperatures and issues relating to extreme weathers, wild fires, floods, droughts and deforestation. With the last year alone dominated by COVID infections through an airborne virus and the environment summit raising an alert. Both the scientists and pressure groups have come to a point where the views have met and there is no excuse but to take action.

The responsibility is ours.

Rev. John Madinda

Delivering Sextons Wheel.

Do you have a couple of hours to spare each month? We are looking for volunteers to help deliver the Sexton’s Wheel at the end of each month. The magazines will be delivered to your door each month ready for you to deliver.

Interested? then please call Ian on **07557990169** for more information.



At The Mayfields Care Home, we believe in a healthy, active lifestyle – one in which our residents can feel like winners. That's why we personalise each day to meet the individual activity needs of our residents and their families.

And hearing their laughter is music to our ears.

www.castlemeadowcare.co.uk

The Mayfields

SWAN LANE, LONG STRATTON, NORFOLK, NR15 2UJ
CALL 01508 535 500 TO ARRANGE YOUR VISIT



castlemeadow
CARE

RESIDENTIAL CARE | DEMENTIA CARE | RESPITE CARE | SHORT BREAKS



ANTHONY JAMES BRICE

CHARTERED CERTIFIED ACCOUNTANT

♦Tax ♦Accounts ♦Audit

**Small and Medium Sized Businesses, Self
Employed Individuals, Clubs and Charities**

*No-obligation free initial consultations, fixed competitive fees
and personal service*

T: 01379 608558 M: 07592 146144

E: anthony@ajbriceaccountancy.co.uk

W: www.ajbriceaccountancy.co.uk

The Old Forge, The Street, Pulham St Mary, Diss,
IP21 4RD.

Contact Care

Personal Lifeline
Alarms



A Contact Care lifeline provides
you with help and reassurance at
the touch of a button

Installed by us throughout East
Anglia

Just £3.70 a week &
an installation fee of £40



0800 917 4680

Cubs Activity Day



Our Cubs had a great time last term on their Activity Day at Eaton Vale Activity Centre in Norwich. We had Cubs from

both our Tuesday & Friday Cub Packs join us for a day full of fun & adventure, to celebrate Cub Scouts being 105 years old!



After splitting into their groups, our Cubs set off to their first challenge. The Cubs had a session on the indoor climbing wall. To begin with, they tried climbing up the wall – and a few Cubs even managed to reach the top! Then they tried traverse climbing along the wall with some extra challenges thrown in too. After climbing, the Cubs set off to have a go on the pedal go-karts. This was lots of fun, especially with the adults joining in for some of the races round the track too!

Then it was time to stop for a big picnic lunch, meeting up with their friends from the other groups. Next, the Cubs had a 105th Birthday Challenge to create a natural collage in the woods

in teams based on the birthday theme. They worked really well together & came up with some brilliantly creative collages. The Cubs ended with a canoeing session on the river – which, for many, was their first time having a go at water activities. It was a lovely way to end our fun-filled day.



Four Week Challenge.

Could you take on our Four Week Challenge? ... We invite you to have a go at volunteering for four sessions to find out more about what we do in the Scout Group, to help out & see the difference you will make.

The challenge is totally flexible, can be started at any time and does not have to be completed on consecutive weeks. You don't need any experience, just a willingness to come give it a go.

We have a wide range of opportunities. This could be supporting our young people – we have various age groups from 6 upto 18 who meet on different evenings throughout the week. Or you could support behind the scenes with event planning or admin – done at a time to suit you.

Volunteering is good for you & good for the community... why not give it a try?

Interested? Please contact Peter (Group Scout Leader) to find out more on pta.thurston@tiscali.co.uk or via www.facebook.com/1stlongstrattonscoutgroup

You can also find out more at scouts.org.uk/volunteer and norfolkscouts.org.uk/join



- All makes and models
- Insurance approved
- Small dents to major repairs
- Tyres at competitive prices
- Vehicle sales
- Courtesy cars available

Where quality counts!

01508 535888

Unit 2 | Robert Harvey Way
Tharston | **NORWICH** | NR15 2FD
www.ymark.com | info@ymark.com



Family Run, Private Hire Taxi
Based in Long Stratton

Offering a friendly, reliable service
Short and Long Distances
Airports and Stations
Courier Service
6 and 8 seaters

It is highly recommended to
pre-book

Please call or message on
07464736667
Or visit www.kandjcars.co.uk

JIMMY BURT

PLASTERING SERVICES

Over 30 years experience
Accredited by Norfolk County
Council Homecall

All plastering work undertaken

- Internal & external
- plastering rendering
- reskimming over Artex,
- dot & dab plastering
- patch up work
- Insurance work undertaken

Free quote
Friendly service



01953 713855 - 07833 965606
jimmyburtplasteringservices@gmail.com

ARE YOU LOOKING FOR:

Dog Boarding

Dog Walking

Pet Sitting

**If so contact Jane on :
07561106701**

**Long Stratton, Norwich &
Surrounding areas**

Also offer house sitting and security while
people are away from home.
Police checked - Reference on request

Quite a lot of time has elapsed since we last updated you all.

The Guides returned after the holidays a little later than usual. However, since our return we have been busy.



The first night back we began looking at Leadership as a topic and had some fun making a square from 7 shapes (Tanagram puzzle). Once the square had been mastered the Guides made their own Tanagram and then made some animals. (Fox, bird, fish.)

Another meeting saw everyone have a go at making tin can pancakes. All the Guides made their own burner and used candles as the heat source. Pancake batter was made, pancakes cooked and a variety of pancakes consumed. Some were thin, some stodgy, others a bit brown, but everyone enjoyed eating them with the syrup and sugar supplied by Rosemary.



The week before half term is filled with more creative projects and then a trip to the ski slope at Trowse for Tubing after the short break.

We look forward to filling you in on our further adventures next month.

The Guide Leaders

2nd Long Stratton Brownies

During February we remembered our Founders – Lord and Lady Baden-Powell who both had their birthdays on 22nd February. In guiding this is called ‘Thinking Day’ when we think of all Girl Guiding members around the world.

In our badge work this month we have looked at some of the things Brownies used to do and traditional games they used to play. Perhaps you remember learning about the Union Flag, playing Hot Potato, Heads and Tails and how to pass on a Brownie Smile in games. One night, in their Six groups, the challenge was to build the tallest card tower – as you can see from the picture one group managed to get 5 cards high before they fell down (a little blu tac also helped)!

We also drew pictures with instructions through a ‘Chinese Whispers’ and thought about personality traits for our friends.



Brown Owl

LONG STRATTON & DISTRICT WI

Our members said how much they had enjoyed the informal members' night meeting to start the year in January. Three long standing members gave short insights into their lives and passed around relevant photos and memorabilia. Lorna had grown up in Ireland, Jill had had a life in farming and Rosemary had a long history of volunteering with the Girl Guide movement. Before the third talk we took a break for refreshments and it was a very sociable evening.

For our meeting on Wednesday 16th March our speaker will tell us about the origins of nursery rhymes. The meeting is open to women of any age and we would be pleased to meet you. Just come along to Long Stratton Village Hall (opposite the Parish Church) at 7.30pm on the 16th March. If you have any questions the contact is on **01508 531154**. Your first meeting is free and refreshments are provided.

Cover Supervisor

Salary – NJC 7 – 11 (£13,428.00 - £14,503.00) Actual Salary
28.75 hours per week, term time plus one week
Working hours 8.15 am to 3.00pm

Long Stratton High School is a small secondary school with well behaved, motivated and aspirational students. The school was rated Good by Ofsted in September 2012.

We are looking to appoint a new Cover Supervisor to supervise whole classes during short term absence of teachers and to allow teachers to carry out professional duties and training. Candidates must want to work with children as well as being flexible, approachable and pro-active in their approach. Candidates must have good admin, IT, organisational and teamworking skills.

Staff at Long Stratton High School are committed to providing a high-quality education to students alongside promoting the school's vision of Achievement for All.

For more information contact: **Mrs Reeve, cover manager, at creeve@lshs.org.uk**
Application forms can be downloaded from **www.lshs.org.uk**

Closing Date for applications is **Monday 7TH MARCH 2022 at 09.00 am**

Long Stratton High School is committed to safeguarding and promoting the welfare of children and young people. Successful applicants will be subject to an enhanced DBS (Disclosing and Barring Service) check and references.



Outline of our village Past

1900-1961

Stratton was a beautiful village at the beginning of the twentieth century. You could enter it on foot or by horse-drawn vehicle along the rough road from Pulham, passing splendid chestnut trees on you left, and some great houses - Sunnyside, The Limes, Briardale, The Deals, the Congregational Church and Manse and so on. Towards the centre of the village was the Manor House, an imposing Georgian mansion in acres of ground, of which only the Ice House now remains. A moat protected the Manor House from the frontage on the road, swelling out into a semi circular shape with the lawns beyond. Swans swam on the moat, and fishing was possible. Roads and transport were primitive. You have to imagine a Stratton without cars, radio or telephone; the large houses, pubs, small businesses and cottages strung up the hill; and a community which relied largely upon itself and was little affected by outside influence.

First World War.

The life and economy of the village centred much round the Francis family, tenants from Col. Burroughes of the Manor House, and providers of employment for any people of the village, in their home and on their estates. Their influence strongly coloured the life of the village, and at Christmas they would give three parties every year, one for their own maids and servants, one for tradesmen and workers of the village and one for the village children. The First World War and the improvement of the road system in the years following it, were the major things that changed Stratton in the first part of the twentieth century. Captain Francis's son was killed in the war, and the family left the Manor House to return to their origins in Scotland. The Manor House, then the property of Mr William Formby, was requisitioned as a hostel for German prisoners of war, but eventually it was sold and dismantled. People in Stratton could no longer look to the Manor House as the living centre of social influence in the village.

Shift from the Centre.

Gradually instead, the centre of peoples' attention began to shift towards Norwich. Three or four people became car owners. The road surfaces were improved. Travel became easier. There used to be a horse drawn carrier's cart three days a week, which took goods and passengers to and fro from Norwich on a journey that took two hours. An enterprising driver, Moore, bought a bus from London Transport to take passengers more quickly. It was an old bus with open staircase and top deck. Full of passengers it broke down on Dunston Hill. But the development of transport produced decade by decade a slow change in the whole character of Long Stratton. Once, it had been an agricultural community, completely self contained. Between and after the wars a slow transformation altered it to the present dormitory estate, more accessible to Norwich than it had been in the old days, but more dependant on it, too.

The Manor House

I am not certain when the Manor House was built. It is not mentioned in Bloomfield 1806 History of Norfolk. On an 1839 map of Long Stratton there is no Manor House building. In Whites directory of 1845 it is described as a handsome brick built mansion and the Burroughes family lived there. **Continued on page 13.**



Susan Whymark Funeral Service Ltd

Independent and Family Run



Susan Whymark Funeral Service

Independent, Family Run Funeral Service

*serving Eye, Harleston and the
surrounding areas Since 2004*

Contact Kelly Williams

Ley House, 11a London Road,
Harleston, Norfolk, IP20 9BH

Tel: 01379 851253 (24hr)

Email: Kelly@susanwhymark.co.uk



Contact Mandy Porter & Joanne Rowe at
Chestnut House, 12 Progress Way,
Eye, Suffolk, IP23 7HU

Tel: 01379 871168 (24hr)

Email: mandy@susanwhymark.co.uk or
joanne@susanwhymark.co.uk

See our customer reviews at

www.susanwhymark.co.uk Email: susan@susanwhymark.co.uk



From page 11

It had seven bedrooms, two dressing rooms, a day nursery and school room and five servant bedrooms. Downstairs was a large lounge hall, a dining room, boudoir, drawing room, conservatory and smoking room. Also a kitchen, scullery, larder, storeroom, Butlers pantry, laundry room and an underground wine cellar. It had a large lawn at the front with tennis courts, an ornamental lake and a stretch of water near the A140 known as the canal. In front of the canal which went from the lake as far as the plantation (where the ice houses used to stand) where Cornish granite posts with iron rails between them. The posts (there are still some near the A140, also incorporated in a wall). The canal was filled in with the soil from when the sewer pipes were laid under the road in the mid 1930's.

Sadly the ice house mentioned no longer remains as a symbol of the manor as it collapsed in 2010. The Burroughes family continued to live in the Manor House until 1888 when Col. Randall Robert Burroughes, the last of the family, died.

In 1896, Henry Kendall Bond lived in the house and farmed the land and managed the estate. There were lots of houses, farms and land as part of the estate. In 1896 a lot of the estate properties were sold. In 1901 Captain Harold Hugh Francis and his family lived in the house. In 1910 the rest of the estate's farms, land and properties were sold by auction including the Manor House and the Home farm which was bought by William Formby for £3,400. At this time, Captain Francis was renting the Manor at a cost of £115/year, his lease was to expire midsummer 1916. At the start of the 1914/18 war his son Basil Hugh was in 3rd Battalion Royal Scots and was killed in action in France on 4th February 1915 aged 19. The family left to return to Scotland after his death. After this the Manor House housed German POW's. William Formby only really wanted the land and shooting rights of the Manor Estate. My Dad used to go beating for the Formby's shoots after school. When my Dad was a little boy (about 1921) him and his friends used to climb up the ivy on the wall of the Manor House (obviously no-one lived there at the time) walk along behind the top facade and collect Jackdaw eggs for his collection. (little boys always had egg collections in those days, he always said his was one of the best). In 1930 Miles Robert Formby inherited the house from his uncle William. In Kelly's directory 1935 the house was said to be unoccupied. It was demolished in the late 1930's early 40's but lots of rubble remained until 1950/60.

After 1961 Stratton grew and grew. In 1961 the first fire station was built, then in 1963/4 Manor Park Gardens, 1965 the Police Station and three police houses, 1967 Bourne Close, Lime Tree Avenue and Willow Close, 1971 Stratton Chase (St Michaels estate), 1974 Telephone exchange and 1975 Flowerpot Lane and Chequers estate and so it goes on.

We are supposed to be getting another 1800 houses in the next few years and a by-pass.

This is the last of the articles which were first printed in the parish magazine in 1976. I don't know who wrote them so I can't thank them or give them credit. I hope you have enjoyed reading about the long history and development of our town.

Judith Baker



**For a limited time, join us now and
receive a £300 bonus!***

We're hiring

Harker House, Long Stratton

**We have a number of positions available at Harker House,
our Care Home in the heart of Long Stratton, Norfolk.**

- **Care Support Workers**

£9.60 - £10.15 + competitive enhancements

Benefits include:

- ✓ competitive rates of pay
- ✓ professional and in-house training
- ✓ clearly defined career development

Apply on our website today

norsecarecareers.co.uk

Contact us:

Recruitment Team

01603 894695

Harker House Team

01508 500980



*£100 will be payable at three months, a further £200 will be payable at six months. This is subject to successful performance, sickness reviews and completion of successful probation period. You will not be eligible for this bonus if you are currently an employee of the Norse Group.



Janette: a key part of the Howards team.

Janette, is well known in the town having worked for Howards for 25 years. Throughout lockdown Janette has continued to support her local clients and seen first-hand the benefits of being able to work flexibly from home.

"Now is exactly the time to be responding to our customer's needs," explains Janette. "For me this means not being tied to an office, but being out in the area meeting my clients when it suits them.

"I've been selling houses in this area for a quarter of a century and now I'm selling houses for my clients' children as well. I'm not going anywhere, so my reputation depends on me delivering an outstanding service at all times and that's exactly what I'm going to do!"

But don't just take our word for it; listen to what her existing customers have to say:

G ★★★★★

I have found Janette and Hayley to be both very professional, polite and kept me informed every step of the way. I have only dealt with Janette in person and she couldn't be more helpful, ten out of ten in my opinion. Keep up the good work. M. L., August 2021

G ★★★★★

I've rarely had such a kind, professional, caring and timely service from an estate agent's. I have felt treated as a valued client, not a potential fee. The difference that makes is huge, as looking for and selling your home is very emotional and kindness goes a very long way. They're stars and I want to publicly thank them for everything. C. C., August 2021

Call Janette Churchill
Partner & Long Stratton Property Expert
T 01508 532 244 E janette.churchill@howards.co.uk

HOWARDS
Estate Agents since 1926
LONG STRATTON



Aspire Homecare offers home based support to enable people to continue living independently in their own home. Our services include:

- Shopping
- Local transportation
- Meal preparation
- Housework
- Gardening
- Professional carpet cleaning
- Accessing the internet
- Days out of your choice

Or just need a friendly face for a cup of tea and a chat

Please give **Nicky** a call today. We can create an individual support package that will suit your needs.

M: 07917 735 415

E-M: info@aspirehomecare.co.uk

www.aspirehomecare.co.uk



R.F. CHIMNEY SWEEP SERVICES

- All Types Of Domestic Flues & Chimneys Swept
- Bird Nest Removal
- Certificate Issued
- Smoke Checks Conducted
- Power Sweeping Available
- Fully Certified & Insured

Call Rob Foreman on:

07584 433527 • 01508 535934

www.rfcss.co.uk • email. info@rfcss.co.uk



Why not use this space to advertise.

We offer:

1/4 page

1/2 page

whole page.

at competitive prices. Why not give us a call on **07557990169** to chat about it or email:

thesextonswheel@googlemail.com

PAUL LOVETT REPAIRS & SERVICING

**Home Appliances and
Garden Machinery**

07999 355267

E: lovett.repair@gmail.com



Covering South Norfolk
& North Suffolk
20+ years' experience



MKL SERVICES HANDYMAN NORWICH

Trying to find a Handy Fixing Service in Norwich? Get in touch with MKL Services, The Reliable Handyman. We offer a selection of services including Plumbing, Tiling, DIY, Carpentry, Kitchen Fitting, Bathroom Installations, Blind/Curtain fitting and more.



EMAIL US AT: MKLSERVICES@ICLOUD.COM
CALL US ON: 07946774775

All services provided will adhere to social distancing rules and government guidelines regarding Coronavirus (COVID-19).

ASSET Investment Management

wealth management specialists

FREE first meeting
Experienced, confidential financial advice
Retirement and pension help
Investment specialist
Need income or growth? – we can help

Beech House, Norwich Road
Long Stratton NR15 2PG

01508 536795

kevin@asset-im.co.uk
www.asset-im.co.uk

Authorised and regulated by the Financial Conduct Authority.





**BASED
LOCALLY
FOR YOUR
CONVENIENCE!**

- All makes and models of cars, vans and trucks serviced.
- MOT Preparation.
- Brakes, clutches, exhausts.
- Tyre supply and fitting service at competitive prices.
- Cam belts.
- Welding.
- 24hr Recovery.
- Courtesy car available.
- Friendly professional service.

Tel: 01508 489066
24hr Recovery: 0779 664 1881

Mark's Vehicle Services, Unit 1, Red House Farm,
High Road, Forncett St Mary, Norwich, NR16 1JR.

Open Monday-Friday 8 til 5:30. Saturday 8 til 1.

All major credit cards accepted 

ACE PLUMBING DAVID MILLWARD

Established 1980

NEW TO THE AREA

Reliable, honest, quality
workmanship.

Specialising in heating system
problem solving and all other
plumbing.

Walnut Tree Cottage - Silver Green
Hempnall - NR15 2NL

plumber1.dm@gmail.com

01508 498005/07763 359313

www.aceplumbingnorfolk.co.uk



GLS Garden Landscape Services Ltd

(Wacton)

*The **complete** landscaping service!*

-
- Fencing ● Mowing ● Paving ● Clearances
 - Decking ● Turfing ● Hedge cutting ● Pathways
 - Grounds maintenance ● Tree work ● Planting *and more!*
-

Contact us for free quotations and advice...

(01508) 807567 • 07749 130872

enquiries@glsonline.co.uk

f @GardenLandscapeServicesLtd

www.GLSOnline.co.uk

A TASTE OF HOPE

A service for all ages.

**Dates - Sunday March 20th, April 24th,
May 22nd, June 26th, July 24th at 3pm**

Long Stratton Methodist Church, Manor Road, NR15 2XS
Followed by tea and cakes.

Organised by Hope Community Church, Wymondham
(For details 01953 798505)

www.hopecommunitychurch.co.uk

hope
COMMUNITY
CHURCH
WYMONDHAM

PEMF - A different kind of therapy...

- Drug Free pain relief
- Better quality sleep
- Improves health and well-being
- Backed by extensive research



←Find out
more about
PEMF

Contact Dean (Long Stratton)

07733 237869

info@thequantumalchemist.co.uk

www.thequantumalchemist.co.uk

LONG STRATTON BOWLS CLUB

The Bowling Green is situated behind the new pavilion on the playing field. The club enjoys a full outdoor season from April to September with members involved in four local leagues, roll ups, in-house competitions and friendly matches.

If you would like to give bowls a try then please come along on our open day (date to be confirmed) tuition and bowls will be available. Everyone of all ages will be given a warm welcome.

The open day date will be in the April's sexton wheel.

For further details or enquiries we can be contacted at lsbcsec@yahoo.com or on 07900734413.

HARLESTON & DISTRICT U3A

Harleston & District u3a invites you to its monthly meeting on Wednesday 16 March, at 2.00 pm in St John's Church, Harleston. Wendy Keeble will give a talk about her travels round the Caribbean and the Americas on a 46ft yacht. "Turn Right when the Butter Melts" will feature life on board, as well as the experiences and adventures she and her husband had during their journey. Further information can be found on our website: u3asites.org.uk/harleston or by phoning Kim Poulton on 01986 788149.

4th
GENERATION

MICKY RYDER & SONS **LTD** **ROOFING** **SPECIALISTS** **BUILDING CONTRACTORS**

4th
GENERATION

Norwich 01603 458884 or 07850 597288
Norfolk 01508 532200 or 07825 908287

**Unit 16 Salamanca Road, Tharston Ind. Est,
Long Stratton, Norfolk, NR15 2PF**

www.mryderroofing.co.uk

mryderroofing@outlook.com



**BUILDING
& ROOFING
SPECIALISTS
LTD**

- **New Roofs**
- **Re-Roofing**
- **Roof Repairs**
- **Leadwork**
- **Flat Roofs**
- **Interior Renovations**
- **Exterior Building**
- **UPVC Windows**
- **Free Consultations**
- **Free Quotes**
- **10 Year Guarantee**
- **Established 75 Years**
- **4th Generation**
- **Quality Service**
- **Council Approved**
- **Constantly Recommended**

METRO PLUMB
THE NATION'S LOCAL PLUMBER
**OIL
BOILER
SERVICE**
£95 +VAT
0800 415 514

WACTON COMMUNITY PATCHWORK QUILT CHALLENGE

Members of Wacton Church are calling on the community to get creative by making quilt patches to create a large Community Patchwork Quilt to be displayed permanently in the church, and to be part of a Quilt exhibition to be held there later in the year.

Whether craft is something you do or not, whatever your age, whether you are male or female, have lived in or around Wacton for a long time or just arrived, part of a group or an individual, please put your creativity to work by making a 9 inch square (leaving a half inch border all round free of decoration for assembling) of knitting, crochet, quilting, applique, fabric painting, embroidery, stitching etc, which we will then assemble together.

The aim is for the quilt to be a snapshot of life in and around Wacton now or during lockdown, and in the year of the Queen's Platinum Jubilee; anything that tells a story or speaks to you of our village. It could be the village sign, the speed cameras, a footpath sign, clapping for the NHS, absolutely anything you can think of!

People have often sought to reuse treasured pieces of cloth (children's outgrown clothing etc) for recycling, patching and repurposing. What could be more environmentally friendly?

If you'd like to have a go please contact **Angie Baldwin on 07771438062** for further information and/or a group session to start you off. There's plenty of help available and we're not looking for masterpieces. Just give it a go.

LONG STRATTON MEDICAL PARTNERSHIP

Swan Lane Surgery, Swan Lane, Tharston, Norwich, Norfolk, NR15 2UY
Tel: 01508 530781

2022 races ahead, and as we head into March, I draw my breath remembering March 2020 when the covid -19 pandemic was declared by the WHO. The practice has faced immense challenges in the past 2 years and we have reflected and realised that there have been many positives which we hope to take forward. The practice needs your support as it expands its services to accommodate the increasing practice population that is expected with new housing. The question arises – how can our patients offer support and improve our service? One of the most effective methods is by joining our Patient Participation Group (PPG). Many of you are already aware of our PPG. We do need more members to ensure we have adequate representation of our practice population. Currently there are 11 members in our PPG. Our PPG would benefit from anyone aged 17 – 50 to make the group more representative of our practice population. The only membership requirement is that you are a registered patient at our practice.

What is a PPG?

A Patient Participation Group (PPG) is a group of patients, carers and GP practice staff who meet to discuss practice issues and patient experience to improve the service.

Purpose of a PPG:

- To give patients and practice staff the opportunity to meet and discuss topics of mutual interest.
- To provide a means for patients to become more involved and make suggestions about the healthcare services they receive.
- To explore issues from patient complaints and patient surveys, contribute to actions plans and help monitor improvements.
- To contribute feedback to the practice on National Patient Survey results and Friends and Family Test feedback to propose developments or change.
- To support health awareness and patient education

Our practice website gives more information: <https://www.longstrattonsurgery.nhs.uk/practice-information/long-stratton-newton-flotman-patient-participation-group/>

I do hope that this article will encourage you to join our PPG, especially patients in the 17 – 50 group. As we look forward beyond the pandemic, we want to ensure that the practice gets the best advice and support from an active PPG and thereby improve and expand services.

Stay safe

Mini Nelson.

The Borderhoppa 2022 outings leaflet is now available. We have many trips arranged throughout the year including pub lunches, garden centres, the coast, mystery tours, boat trips and many more. You can pick up a leaflet at your local library, information centre, GP surgery, from one of our drivers or by calling the office and we'll post one to you.



Borderhoppa outings for March 2022

- Monday 7th – Lunch at The White Horse, Stoke Ash – Fare £7.00
- Monday 14th – Norwich City Centre – Fare £15.00
- Monday 21st – Halesworth & Lunch at The Angel Inn – Fare £15.00
- Mon 28th – Beccles – Fare £10.00

Some outings do have limited space so please book early to avoid disappointment.

For more information or if you would like a copy of our 2022 outings leaflet, please contact us on

Come and join us for....

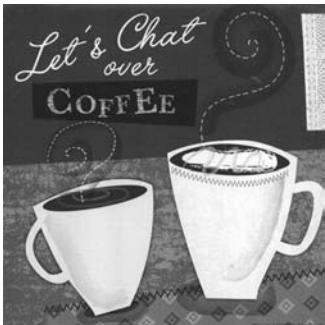
The next Messy Church is on **Saturday 26th March 9 - 10.45 am**
Starting with Breakfast at 9am, followed by a story, crafts, and activities for everyone, and finishing with a short time of worship.



For more information contact Megan on **07956 715383**

Just come along and join the fun!

Children must be accompanied by an adult.



LET'S CHAT STARTING AGAIN

Let's Chat will be starting up again on 22nd March at St Mary's Church. 10.00am - 12.00pm.

Janet and the team will be there to welcome you all back with tea, coffee and homemade cake. And as usual:

All are Welcome.

Long Stratton Town Council

Pavillion, Manor Road Playing Fields, Manor Road,

Long Stratton, NR15 2XR

Chairman: Mr Kevin Worsley Clerk: Mrs B Buck

June Celebrations!

We are in the process of planning an all day summer event to tie in with the Queen's Platinum Jubilee anniversary celebrations. It will be held on Saturday 4th June on the Manor Road playing fields. We would love to make this an event to remember!

In February we held a public community meeting to get ideas rolling for this occasion.

If you would like a stall or are a performer who would like a spot on stage please contact us on 01508 530524 or e-mail office@longstrattontowncouncil.gov.uk (As this is a free community event a small charge may apply for the stalls).

Play Equipment

In February we held a public consultation about ideas for the new play equipment, thank you for all who came. It is not too late to have your say, please look on the website or contact the office. We are excited to be updating our play area and we are looking forward to the kids enjoying the playground!

Community room for hire

The community room at the Pavilion is available to hire, please get in touch if you would like to book, we are happy to show you around at the facilities on offer.

New member of staff

I am pleased to welcome Emma to the Council Office. Emma is local to Long Stratton and will make a valuable addition to the team..

Girls Night Out

Come and join us for a fun evening and a short reflection. Next one is: Thursday 24th March at 33 Flowepot Lane. 7:30pm to 9:0pm

All are welcome

For more information call: **Helen on 01508 530716**

BARKER FAMILY FUNERAL SERVICES

We're all inclusive

*Family run with Family values
and Family at heart*

Provisions of all professional services, an obituary notice via social media, handling of all charitable donations, limousine, motorised hearse and bearers, 3ft coffin spray, includes all fees and choice of coffin.

Total
£3,875

The Simplistic Funeral

Total £1,590

The Street,
Long Stratton
NR15 2XJ

01508 536117

info@barkerfunerals.co.uk

www.barkerfunerals.co.uk



24 Hour Family Caring
Personal Service
Covering Norfolk & Suffolk



We will match any quote and
£50 cashback if you pay in full
before the date of the funeral



Specialists in the supply and install of new and replacement Pvc-u and Aluminium windows, doors, conservatories, secondary double glazing and roofline.
All available in a wide range of colours and styles.

Free surveys and estimates. Trade and DIY enquiries welcome.
For friendly advice and a competitive price.

E: info@moultonwindows.co.uk

W: www.moultonwindows.co.uk

01379 677730

Orchard Farm, Great Moulton, Norwich, NR15 2HA



Big enough to cope, small enough to care

mw
MOULTON
WINDOWS

CHRIS CLARKE OIL BOILER SERVICES

- Servicing
- Commissioning
- Breakdown Repairs

Servicing/Commissioning
07377 516660
Breakdowns
07912 146619



Registered

CARRY-ALL

Mel Rogers

Mob: 07850 402845

Tel: 01508 536182

e-m carry_all@btinternet.com

Suppliers of:

- Mixed hard and soft wood
- Shingle [Natural]
- Sand
- Hoggin
- Ballast
- Crushed Concrete
- Ornamental Granite Chippings
- Top Soil
- Cultivated rolled turf
- Bark Chippings
- Compost & Peat
- Plumb Slate

No VAT - Free delivery



Scan our QR Code to contact us today to book in your **FREE** sales or lettings market appraisal.



BARTON & CO
ESTATE & LETTING AGENTS

Contact us now and quote BARTONLS to receive a **£300.00** discount off our standard sale agency fee or a **Free Upgrade** to our Premium Marketing Package which includes*: -

- Professional Photography
- Glossy Brochure
- Premium Rightmove Listing

Long Stratton
01508 292090

This offer is not to be used in conjunction with any other Barton & Co promotion. Terms & Conditions apply.

Proudly Local and Independent

rightmove

Zoopla

onTheMarket

PrimeLocation.com

The Property Ombudsman



M SHEPHERD OPTOMETRIST LONG STRATTON

OPEN for Eye Exams, Contact Lens appointments and all your eyecare needs.

NOW OPEN 6 DAYS PER WEEK



OUR PROMISES TO YOU:

- WE LOOK AFTER LONG TERM EYE HEALTH
- WE OFFER REPEAT EXAMINATIONS WITH THE SAME OPTOMETRIST WHERE POSSIBLE
- WE USE ADVANCED TECHNOLOGY TO EXAMINE YOUR EYES
- WE PROVIDE OUR PATIENTS WITH THE TIME THEY NEED IN THE EXAMINATION CHAIR
- WE PROVIDE PROFESSIONAL PRESSURE FREE ADVICE

Mon-Fri 09.00-17.00

Sat 09.00-13.30

 01508 532 669

www.mshepherdoptometrist.com

Trusted Service at Your Convenience

Fully Licensed and Insured



www.BartramsServices.com 07402356519 Contact@bartramsservices.com

- | | | |
|----------------------|---------------------------|------------------------|
| • Garden Maintenance | • Tree Removal | • Hedge Cut + Disposal |
| • Gutter Cleaning | • Garden Redesign | • Grass Cut + Disposal |
| • Ivy Removal | • Patio and Decking Clean | • Lawn Treatment |

Activity Programme

April to September 2021

Free online activity programme for 0 to 5s in Norfolk



The Early Childhood & Family Service (ECFS) is still running, offering extra help to families who need it. Right now, due to Covid-19, we're providing a programme of online activities and groups that are available to families with children aged 0 to 5 years.



Early Childhood and Family Service

Live Online Groups

Baby Days Live Online

Six weeks of free online sessions for babies with their parents/carers. Each session will have a new learning activity to try out with your baby, plus an opportunity to meet other parents and talk to knowledgeable staff. Best suited to babies who are not yet walking.

Toddler Days Live Online

Six weeks of free online sessions for under 5s with their parents/carers. A chance to meet other parents, talk to knowledgeable staff and take part in fun, learning activities.

Baby Massage Live Online

A free five week course introducing massage strokes that can help with colic and support you and your baby to feel more relaxed, whilst strengthening your bond.

Register at

tinurl.com/ECFSevents

Sessions take place online via video call on Microsoft Teams. You only need an internet connection and a smartphone, tablet or computer to join.

If you would like to join but need help with technology, or you don't have a suitable device, please [contact us](#) on 0344 800 8020 to see how we can help.



Need extra help or someone to talk to?

We are here to help with things like:

- Becoming a first time parent
- Bonding with your child
- Parenting challenges
- Mental wellbeing
- Healthy relationships
- Learning through play
- Communication & language development

Please contact us and one of our team will be in touch.

Online form:

www.tinurl.com/ECFSHelp

Email:

ecfs-families@actionforchildren.org.uk



New videos or themed activity posts every day at [facebook.com/EarlyChildhoodFamilyService](https://www.facebook.com/EarlyChildhoodFamilyService)

Videos also on our [YouTube channel](#). First view on the day/time shown or catch up later



Musical Monday with Magic Acorns

A fun mini music session for you and your little one to join in with at home. Designed to help build little brains and bodies, while encouraging communication and confidence.

Let's Get Talking!

Ideas and activities to get your toddler talking, plus information on how the things you do with your baby, from birth, can help their future language and development.

Children's Wellbeing

Tips to help you understand and nurture your child's emotional development, including how to deal with difficult situations.

Fun and Learning

A variety of indoor and outdoor activities for you to enjoy with your baby or toddler.

Cookalong

Step-by-step videos for easy family recipes which are fun to make together and will save you money compared to ready prepared food. No experience necessary!



Monday

1.30pm

Tuesday

11.00am

Wednesday

1.30pm

Thursday

11.00am

Friday

1.30pm

Other activities for 0 to 5s and their families

Norfolk Libraries for Families

Weekly Online Bounce & Rhyme sessions, Story Week activities and Social groups via Zoom. Find out what's on from [Facebook](#) or www.norfolk.gov.uk/libraries



Norfolk Family Learning

Interactive 'Come and Try' taster sessions and online courses for families to enjoy together. For details and to book visit www.norfolk.gov.uk/familylearning



Norfolk Community Directory

Search for activities and services run by volunteers or other organisations in your local community. Visit communitydirectory.norfolk.gov.uk



0344 800 8020 | www.norfolk.gov.uk/earlychildhood | ecfs-families@actionforchildren.org.uk

Keep up to date with
the free
Action for Children
Services App



Courses offered by the Early Childhood and Family Service



Our courses are running online via Microsoft Teams, or in small face-to-face groups at our risk assessed bases. Extra hygiene measures are in place and we will ask you to wear a face covering, unless you are exempt.

Solihull Parenting Course

A 10 week course to help you learn more about your child's development and behaviour. What is their behaviour telling you?

Baby Massage

A 5 week course for introducing massage strokes. This can help with colic and support you and your baby to feel more relaxed, whilst strengthening your bond.

Freedom Course

A 10 week course for women who would like to look at healthy relationships and to have a safe environment to be able to discuss and understand previous and current relationships.

Triple P

An 8 week course that offers support, information and practical answers to everyday parenting concerns.

Circle of Security

An 8 week course based on supporting and strengthening the attachment between you and your child.

Our partners



Home-Start Norfolk and the community offer in your local area are also part of the Early Childhood and Family Service, and are available to support you and your family.

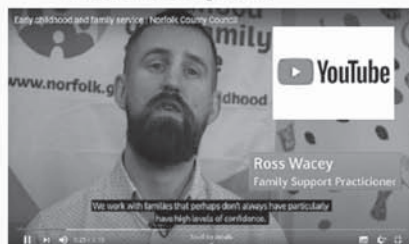
How to contact us

You can get more information on the service by visiting www.norfolk.gov.uk/earlychildhood

If you would like further information, help or support then please call us on 0344 800 8020 or email us at ECFS-Families@actionforchildren.org.uk



Any updates on services or groups can be found by visiting our Facebook pages. Search for Early Childhood and Family Service



See our video on YouTube to find out more


Useful contacts

Coronavirus Information	norfolk.gov.uk/coronavirus
Just One Norfolk (Health Visiting Team)	0300 300 0123
Leeway (Domestic Abuse Support)	0300 561 0077
Norfolk & Waveney Wellbeing Service (Mental health support)	0300 123 1503
Home Start Norfolk	01603 977040
Speech & Language Advice Line (ECCH)	01502 719830
Norfolk SEND Partnership	01603 704070
National Breastfeeding Helpline	0300 100 0212
Norfolk Police (non-emergency)	111
CGL (Alcohol & drug behaviour change service)	01603 514096
Citizens Advice Bureau	03444 111 444
Shelter (Help with housing & homelessness)	0808 800 4444
Job Centre	gov.uk/contact-jobcentre-plus
Mens Advice Line (for men in abusive relationships)	0808 801 0327

If you are worried a child is at risk please call Norfolk County Council Children's Services on


0344 800 8020
or 999 in an emergency

RECOMMENDED
GOOD
FUNERAL GUIDE



"Thank you Rosedale, your support and guidance made this difficult time a little more bearable."

— from a family we have cared for at Rosedale

 We are a family business and promise to provide exceptional care and a truly personal 24 hour service, when you need it most.

Victoria Rd, Diss **01379 640810**
www.rosedalefuneralhome.co.uk

JUMBO BAG DELIVERIES

SAND

TOPSOIL

MULCH



BALLAST

SLATE

PLAY BARK

STONE 6/10/20MM

MUSHROOM COMPOST

**CALL 01508 470674
FOR A PRICE TODAY**
Simons Landscaping Ltd

Electrician



Local, Friendly, Reliable
N.A.P.I.T. Registered that
works on all aspects
of Domestic and
Commercial Electrics
including storage heaters

Contact Ian or Caroline

@ ICD Electrics on
**0779 0273 689 or
0788 8740 473**

E-mail: icdelectrics@hotmail.co.uk
or www.icdelectrics.co.uk



Balliwick IT Ltd.

Having Computer Problems?

Windows and Apple Mac repairs, upgrades & troubleshooting

virus & malware removal, printer supply, data recovery ,

Microsoft 365 services, 4G Broadband solutions,

New & Factory refurbished machines, Security software,

Domain names, emails & hosting, Networking services.

Tel: 01953 718421 Mob: 07928 326008

Email: help@balliwickit.com Web: www.balliwickit.com



THARSTON & DISTRICT WI

The committee have been working hard to arrange events for this new year, hoping that we will be able to meet on a regular basis, possibly having to do some things in a slightly different way.

Our first event was a jigsaw race with tea and cake. Teams worked together to complete a jigsaw in the quickest time. Not easy when there is much chatter as there is always a lot of catching up to do. The winners, Suzanna Averill, Penny Deegan, Linda Jenkins, Margaret Wilde, Penny Sampson and Gabby O' Shea (pictured)



proudly displayed their finished jigsaw, to the groans of others who were almost finished. Plans are underway for many other activities during the spring and summer. As usual most events include food, but also opportunities to talk with friends whilst visiting different places or learning new skills.

We are planning our summer outing and have got several ideas which are now being researched. Maybe a trip on a bus, a boat or a train but certainly not by aeroplane! We generally travel by coach which gives all a chance to relax and chat with no worries about parking cars in a possibly busy place.

The marmalade making is underway and fortunately we can freeze some of the Seville Oranges to chop and cook later. The sale of the preserves helps to fund some of the events that we arrange, as well as the cost of transport for our summer outing. We sell the preserves at our meetings and also have a stall at local fetes when possible. It is always good to meet different people at these events as well as also benefit our members. Let's hope we have plenty of customers.

We meet at Wacton Village Hall on the 2nd Thursday each month at 7.30pm.

Heather Jeary

Thursday Club

We finished last year and started the New Year with a now familiar theme of our club FOOD. In January members met for lunch at the Sugabeat Eating House, good food, good conversation and plenty of laughter was the order of the day and we even had to draw the curtains against the sun !!!!

It was with great sadness that Carol informed the meeting that a very active past member of the Thursday club had sadly passed in February. Our thoughts are with her family.

February saw us back at the village hall.

Wow !!! Our speaker Jane Hoggar was certainly the tonic we all needed at this present time. Her life story, singing and dancing took us all down memory lane. Her travels transported us to warmer climates. Soon we were clapping and singing along.

Following our speaker, much needed refreshments were served. As Valentine's day is fast approaching our quiz topic was on love.

Our next meeting is Thursday March 10th. Our speaker is David Shaw with 'Tales of an Actor'. We meet at the village hall @2pm. Everyone will be welcome.

Happy Feet



Qualified Foot
Health Professional

Treatment of corns, calluses,
nail infections and much more.

To arrange a home visit please call
Wendy Latoy MCFHP, MAFHP on

01379 676872
or **079 2345 4646**

PHILIPPA GREEN WEB DESIGN

**Bespoke & Affordable Web Sites
Built For You**

**Mobile Device Friendly Screen
Width Responsive**

**Domains, Hosting, Email,
Shop, Self-Updating &
Standard Web Sites**

**Over 14 Years Experience
Promoting Small Businesses**

01508 532670

admin@philippagreenwebdesign.co.uk

www.philippagreenwebdesign.co.uk

NO VAT - Fully Insured & Qualified



**AUTOMATIC GARAGE DOOR AND
GATE SPECIALIST**

INSTALLERS OF ALL TYPE OF
GARAGE DOORS,

UP AND OVER, SECTIONAL, ROLLER AND
SIDE HUNG. AWNINGS.

SLIDING & SWING GATES, UNDERGROUND
OR OVERGROUND UNITS.

FAST SERVICE ON REPAIRS
25 YEARS EXPERIENCE

Tel: 01379 651959
www.chapeldoors.co.uk

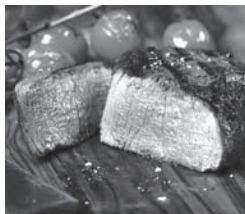
NETHERTON STEAKHOUSE

The Street, Long Stratton NR15 2XG www.nethertonsteakhouse.co.uk



**Great menu for all to
enjoy inside or
outside dining**

17th Century inside plus
heated pagoda and
garden outside



FULL FOOD MENU

Wed eve: 5pm-9pm

Thu, Fri & Sat:

12 noon-9pm

Sunday: 12 noon-5pm

including full roast option



See Facebook
or phone **01508 531500**

**TO BOOK EMAIL
enquiries@
nethertonhouse.co.uk**

WACTON FOOTCARE

The next session of WACTON FOOTCARE will take place on TUESDAY 1st March.

Should anyone be considering a 1st appointment for Footcare please feel free to call either of the numbers below for further information or to book an appointment.

The contact numbers are ---

Clare --- (Footcare Specialist) --- 07785 295358

Rita --- (for further information or to cancel an appointment) --- 01508 218407

WACTON COFFEE MORNINGS

We hope to hold our Coffee Mornings on 1st and 15th of March as usual and look forward to seeing you there. We meet on the first and third Tuesday morning of each month, so please come along and join us from 10.30 am until noon for a cup of 'real' coffee and delicious cake or biscuits. We are now meeting in the main hall of the Village Hall so there is plenty of room!

Rita and Caroline

Teachers Hutchinson

Mr and Mrs Hutchinson, the school teachers at Long Stratton, mentioned in the February edition of the Sextons Wheel, have connections with Wacton and I had already done some research on the family.

George Hutchinson was the son of John, a plumber, and his wife Sarah of Chelmsford. In 1871 they had four children, Emma, George, Mary Ann and William, although they were all still at school. George, aged 13, was a pupil teacher at his local school.

By 1881 George had obtained the position of school master at Long Stratton, assisted by his sister Mary Ann, aged 21 and the 18 year old May Augusta Bareham. Not the sort of staffing we normally consider for a school in the late 1800's!

In due course George married his young assistant in 1883, not in Stratton but in the Tendring district of Essex, probably Little Clacton where May came from. I don't know where they lived, the school in Stratton had no house attached, however George and May had six children, Frances May born in 1886, George who died shortly after his birth in 1887, then Margaret Hilda, Hubert John, Alice Mary and Dorothy Mabel at two year intervals.

The three teachers ran the school together, until December 1896 when George died at the age of 39. Presumably a new head master was appointed after George's death and May and Mary continued as assistant teachers until around 1903.

The Wacton Poem, published in 1987, mentions that Mrs Hutchinson was first recorded as School Mistress in 1904, however May and her son Hubert, known as Jack, were mentioned as running stalls at Wacton fete in 1903.

By 1911 May and Mary were living in Victoria Cottages, Wacton and on Census day of that year Frances, Alice, Margaret and Dorothy are listed as visitors. Two were teachers, Dorothy a governess and Margaret a Lady's maid, but again it is not known where they were normally resident although Frances gives her employment as with 'Norwich Education' and Alice as 'Norfolk Council'. Only Hubert was absent and he was a theological student, St Boniface College 6 Church Street Warminster.

Shortly after Hubert went as a missionary to Barbados, becoming ordained in 1916 and taking on the curacies of St Peter Barbados and St George Granada. In 1920 he became the Vicar of St Phillip Barbados until 1923 when he returned to the UK, taking the parish of Northam in Devon. After a couple of years he moved to East Anglia to become SPG secretary to the St Edmundsbury and Ipswich Diocese.

The Wacton Poem has a line saying "for a missionary went, her famous son Jack, they said he went, but he may never come back." in the notes to this is a statement "But he did – and villagers alive today remember hearing him come to preach", sadly now many of those that heard him are dead, or are they?

Whether it was due to the British weather or a further calling he left in 1928 to go to Malaysia becoming Chaplain to Malacca then South Perak but after a few years he returned to the West Indies to take the position of Vicar of St Martins Barbados. Later he was appointed Dean to Barbados and in 1950 Archdeacon of Barbados. It would be interesting to know about the rest of the life of this Stratton boy.

Meanwhile at home in Norfolk, May and Mary continued to live at Wacton until at least 1927, the last date for which I have transcribed the register of electors. May appears to have died in 1936, but I have no more information about the other children of George and May.

At this point I'm left wondering about the other teachers at the Stratton schools, (and Wacton) and wonder if anyone would like to look at their history and achievements. Most of the information is available online and for free, at least a reference and minimal details are, and in many cases all they need is collating. I'm willing to guide and help anyone thinking about looking at local history whether it be an individual, family, or property.

Robert Maidstone contact 01379677106 or robertwmaidstone@gmail.com 698w)



Prayer Shawl Ministry

In Wacton we are launching a 'Prayer Shawl Ministry'.

These are shawls that are hand knitted or crocheted but could also be woven, sewn, quilted, or machine knitted. There is no right or wrong way to create these gifts of love. They do not have to look alike or be the same colour. The patterns are simple and each shawl is one of a kind. Blessings are worked into every shawl as each one is started with prayers for the recipient and continued throughout the creation of the shawl. Each shawl is given a final blessing before it is given to someone to be enfolded in God's love and healing peace.

A shawl may be given to a person undergoing medical procedures, during an illness and recovery, as a comfort after a loss, during bereavement, for someone who feels lonely or depressed. The possibilities are endless!

How are the shawls made?

If you are a knitter or crochet fanatic, have a
little time and feel you'd like to help with this
ministry,
OR

if you know of anyone who would benefit from or appreciate a shawl please contact
Angie Baldwin email: angiekbaldwin@gmail.com or phone 07771438062

HOW TO CONTACT US

LONG STRATTON Safer Neighbourhood Team



Insp Richard FREEMAN
Local Policing Commander

The Local Policing Commander is responsible for a group of Safer Neighbourhoods teams. The Inspector also works with our partners and communities to reduce crime in your neighbourhood and focus efforts on the priorities that matter to you.



101 Ext: 2796



Richard.Freeman@norfolk.police.uk



PC Vicky BAILEY
Engagement Officer

Your Engagement Officer is here to provide communications and updates regarding your neighbourhood as well as co-ordinate volunteers, specials, community speedwatch and / or cadets.

Contact them for local enquiries that affect your neighbourhood.



101 Ext: 1113



Victoria.Bailey@norfolk.police.uk



PC Andy BARKWAY
Beat Manager

Your Beat Manager PC is here to engage with the local communities and work to solve local issues and priorities within your neighbourhood.

The Beat Manager's aim is to keep your neighbourhood as a safe place to live, work and visit.



101 Ext: 3885



[SNTLongStratton](mailto:SNTLongStratton@norfolk.pnn.police.uk)
[@norfolk.pnn.police.uk](https://twitter.com/norfolk.pnn.police.uk)



SNTLongStratton@norfolk.pnn.police.uk



[/SouthNorfolkPolice](https://www.facebook.com/SouthNorfolkPolice)



[@SouthNorfPolice](https://twitter.com/SouthNorfPolice)



NORFOLK
CONSTABULARY
Our Priority is You

WACTON CHURCH COFFEE MORNINGS

Wacton Church holds a coffee morning every month (the second Saturday of each month) at 10.30 am,

The next coffee morning will be on Saturday 12th March 2022!!



All are welcome

CARLETON RODE JUBILEE HALL

At Carleton Rode Jubilee Hall, we have recently resurfaced our disused tennis court into a fabulous new floodlit 3G Astro surface. We were also fortunate enough to secure some community grants to offer a suite of subsidised community activities. Our aim is to attract local families to try new activities, reconnect with each other and improve overall wellbeing amongst our communities, in an outdoor space and therefore covid-safe way. Please feel free to come along and try our new activities, free taster sessions!

Mondays 6-7pm Walking Football

Mondays 7.30 - 8.30pm Cardio Tennis (from Mon 7th Feb)

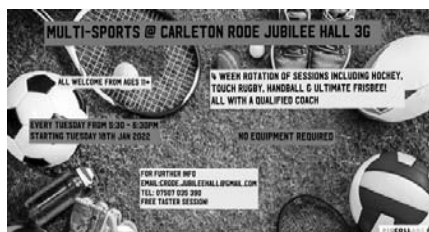
Tuesdays 5.30 - 6.30pm Multisports (from Tues 18th Jan)

Thursdays 8 - 9pm Adult Football Roll-up

ALL with qualified coaches.

For more info: **email: crode.jubileehall@gmail.com mobile: 07507 035390**

Court also available for private/group hire.



Snowdrops and castles

Our February walk fell on a glorious sunny day between two cold and rainy ones. What luck! We parked at the far end of the extensive common at New Buckenham and set off, not on the common itself but down a quiet lane beside it, soon turning left along a rather soggy grass path beside a rape field, then right beside a deep ditch, passing a field of sheep. We noticed tracks of deer and horses in the mud, while a flock of field fares wheeled overhead. Animal life got more domestic when we met an enthusiastic puppy who insisted on greeting everyone; as there were eight of us, that took some time. Coming to a minor road, we turned left with views back to New Buckenham. Only one vehicle passed us and that was a working tractor loaded with straw bales. When we came to a fork in the road, we kept left down Cuffer Lane. Again, absolutely no traffic and lovely vistas in all directions. A robin sang of spring from a catkin-laden hazel. We passed a lone cottage with a stall selling preserves: marvellous marmalade, brilliant blackcurrant to which one of our number succumbed. The tall church came in



sight and we thought we had reached the end of the walk but no, there was more to come: a visit to the eleventh century castle. Our leader, Liz, had obtained the key to the gate. We made our way down a long footpath which circled the castle mound. Three hares dashed across the field and two dear little Shetland ponies cropped the grass beyond the hedge. It was a bit squelchy after the easy road walking but we all managed to keep our balance as we circled beside the moat and crossed the moat bridge to the iron gates. Then disaster! No, nobody fell in the moat but alas, the key did not fit - the padlock had been changed and we had been given the old key. One by



one we peered through the bars like children outside a sweetshop; at a certain angle you could just glimpse the castle. But nothing to be done short of swimming the moat, so we carried on into the pretty village, where there were many lovely old buildings: St Mary's Chapel, the almshouses, the Wesleyan chapel. As we inspected the fascinating sixteenth century market cross, Liz rushed up with the correct key. Did we want to go back? Yes, we did – it would only put half a mile on the walk. And it was well worth the effort. The castle, at 20 feet, was only half its original height but the steeply wooded ramparts were over 40 feet high and, excitingly, you could walk all the way round on top, thanks to some steep steps cut at one side. Swathes of snowdrops flowered the slopes. It really was a picture. When we finally arrived back to the village for the second time, there was still the magnificent church. With time now at a premium, we could only give it a quick visit; it would certainly repay a second. Many thanks to Liz for a very interesting morning.



Bonnie

LONG STRATTON LIBRARY

We continue to restore services at Long Stratton Library. We currently have:

1. Tables and chairs, so you can sit comfortably again
2. PCs and public wi-fi, including printing and copying services
3. Just a Cuppa on Mondays from 11am
4. Bounce & Rhyme on Tuesdays at 2pm
5. Lego Club (age 8+) on Tuesdays at 3.45pm
6. Stitches & Knitters on Thursdays at 4.45pm
7. Coming soon we have a Lego Club for ages 2-7 - ask staff in-branch for further details

You can keep in touch with us on Facebook by searching for '**Diss, Harleston and Long Stratton Libraries**'. You can also call us on **01508 530797** with any questions.

Our opening hours are as follows - please note that Open Libraries is unavailable for the time being.

1. Monday 11am-7pm
2. Tuesday 1-7pm
3. Wednesday CLOSED
4. Thursday 1-7pm
5. Friday CLOSED
6. Saturday 11am-4pm
7. Sunday CLOSED

Ryan Watts, Library Manager - Diss, Harleston & Long Stratton Libraries
Norfolk County Council Library & Information Service



Norfolk
County Council

CHURCH SERVICES - March

Wednesday 1st March St Mary's 10am Ash Wednesday Service

Sunday 6th March St Mary's 11am All Age Worship
Wacton 9.30am Holy Communion

Sunday 13th March St Michael's 9am Holy Communion
St Mary's. 11am Holy Communion

Sunday 20th March St Mary's 11am Morning Worship
Wacton 9.30am Morning Prayer

Sunday 27th March. St Michael's 9am Holy Communion
St Mary's 11am Mothering Sunday Service

World Day of Prayer **Friday 4th March 2022 at 2pm**

United Service at Long Stratton Congregational Church. A service for everyone entitled - "I know the plans I have for you". Service prepared by the Christian women of England, Wales & Northern Ireland.



Congregational Church Services

Friday 4th March at 2:00pm - United Service - World day of Prayer.

Sunday 6th March at 10:45am - Family Service incl. Holy Communion - Rev Ian Jones

Sunday 13th March at 10:45am - Family Service - Pastor Malcolm Simpkin

Sunday 20th March at 10:45am - Family Service - Mr Colin Basham

Sunday 27th March at 9:45am - Monthly Prayer Meeting

From the Parish Registers

We offer our deepest sympathy to the family and friends of:

Jocelin Knight - 11th February - St Michael's

Patricia Symes - 25th February - Interment of ashes

Albert Bailey - 23rd February - St Mary's

THE SEXTON'S WHEEL

If you have something to tell us, an event coming up, an article of interest please contact us **email: thesextonswheel@googlemail.com**

tel: 07557 990169

or send to the **Parish Office** 8 Flowerpot Lane, Long Stratton, Norwich NR15 2TS using the form below.

If you would like to advertise any Community Events this is free and we can tell over 2200 households

Editorial: If possible all editorial to be sent by e-mail. This saves time putting the magazine together and more importantly this would ensure names of people etc are spelt correctly. **Deadline for editorial is the 11th of the month**

Images: Any pictures you may have to accompany editorial would be welcome. Please send these as jpgs not embedded in a word document.

Adverts: Advertising rates per issue: -

Quarter page(6cm x 9cm)	£19.20	Half page (13cm x 9cm)	£33.60
Full page (13cm x 18cm)	£60		

Market Place: Advertise items for sale or wanted for £5 per item per issue. maximum 30 words. This is not for commercial items but private adverts only. There is a maximum selling price of £500 for goods and the editorial team reserve the right to refuse any advert they feel unsuitable. The Sexton's Wheel will not be held responsible or enter into correspondence for any transactions between the buyer and seller. No logos or pictures

Deadline for adverts is the 5th of the month

Fixed charge of £10 for designing and re sizing any advert supplied - we will inform you when the advert is submitted if there is to be a cost incurred. No charge for change of wording if supplied as word document.

ADVERTS and DISTRIBUTION OF MAGAZINES - Ian Hetherington
07557 990169 thesextonswheel@googlemail.com

EVENT _____

DATE _____

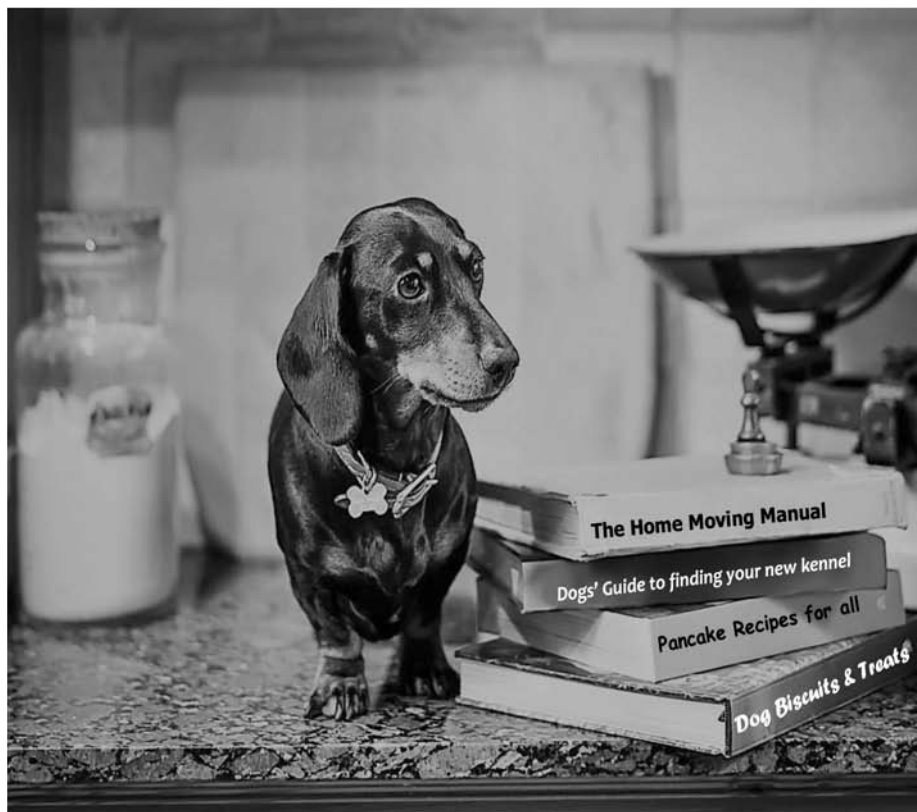
TIME _____

PLACE _____

BRIEF DETAILS _____

CONTACT _____

Weighing up your options?



Whittley Parish - The best recipe for a successful move

T 01508 531331
E long.stratton@whittleyparish.com
W www.whittleyparish.com
Beatrix Potter Cottage, The Street, Long Stratton, Norwich NR15 2XJ

