

The Sexton's Wheel

Issue 216

The magazine for Long Stratton & Wacton



January 2022

Long Stratton Village Hall - Booking Information



The hall can be booked as follows:

Via our facebook page, search Long Stratton Village Hall

Via our website www.longstrattonvillagehall.org.uk

Email us at longstrattonvillagehall@outlook.com

Call Kirsty Dye on 07986942804 and leave a message

Hire rates from as little as £7.50 per hour.



Wacton Village Hall - Booking information

The meeting room has seating for 22, suitable for small functions. The main hall has a semi-sprung floor with capacity for 80 seated or 120 standing. There is a fully equipped kitchen and a full complement of tables and chairs. All areas are accessible for wheelchairs, there is a baby changing station. Hourly rates are £6 and £10 respectively or £13 for the hire of the whole hall. **Angie Baldwin 01508536639 or wactonvh@outlook.com**

Church Contacts

St Mary's Chrissy Briggs - (01508) 536724

St Michael's TBC

All Saints' Angie Baldwin (01508) 536639

} or contact: **Parish Administrator Marianne**
} at **LSTeamAdmin@btconnect.com**

Congregational Church June Braddock (01508) 470701

Church Parish Office

Is open, Thursday 9.30 - 12.30pm. At other times email the Parish Administrator, Marianne
at LSTeamAdmin@btconnect.com

If you know of anyone who is unwell or would benefit from a visit from a member of our
ministry team please contact (to be confirmed)

Long Stratton Town Council, The Pavilion, Manor Road, Long Stratton

Usual office hours are Monday, Tuesday and Thursday between 10am and 1pm and
by appointment at other times.

Tel: Clerk Becky Buck 01508 530524 E-mail: clerk@longstrattoncouncil.info

The Editors reserve the right to edit or decline any material submitted for publication. While every effort is made to ensure that the contents of the magazine are accurate, no responsibility can be taken for errors and omissions. The material printed does not necessarily represent the views of the magazine committee and no recommendation of products or services is implied. While the committee take reasonable care when accepting advertisements for publication, it cannot accept responsibility for any unsatisfactory transactions. Errors and omissions excepted.



A Happy New Year to one and all. Time to make those New Year resolutions. Hopefully it will be a better year for all of us.

This month we have a slimmed down version with some of our usual contributors missing.

The Sexton's Wheel Team

- | | |
|---|--|
| 2. Booking information Long Stratton & Wacton Village Halls.
Church Contacts.
LSTC opening hours. | 34. The plight of the four Parish officials who sold Wacton's Poor Cottages. |
| 5. 2nd Long Stratton Brownies. | 35. Wacton Church Coffee Mornings. |
| 7. 1st Long Stratton Scouts. | 36. Local Walks. |
| 9. 1st Long Stratton Guides. | 37. Long Stratton Library. |
| 11. Long Stratton WI. | 38. Church Services.
From the Parish Register. |
| 14. New Year, New Beginings.
Thursday Club. | 39. Contact details & information on
the Sexton's Wheel. |
| 19. BorderHoppa. | |
| 20. Outline of our Village Past. | |
| 22. Harleston & District u3a | |
| 23. Schools. | |
| 28. Early Childhood Family Service. | |
| 31. Tharston & District WI.
Messy Church. | |
| 33. Wacton Footcare.
Wacton Coffee Mornings | |

HOMEFRONT

*Handyman Maintenance
Services*

- Bathroom & Kitchen refurbishment
- Painting & Decorating
- Plaster Repairs
- Carpentry
- Plumbing
- Disabled Access work
- Garden Services

John Johnson

01508 531021 • 07958 606637
johnnyxj@yahoo.com

KENT SKIPS

WE COVER SOUTH NORFOLK & NORTH SUFFOLK

*** PROMPT & RELIABLE SERVICE**

*** NEXT DAY DELIVERY**

*** LARGE OR SMALL LOADS**



Yew Tree Farm, Pulham Market, Diss, Norfolk, IP21 4XN

info@kentskips.com
www.kentskips.com



**Richard
Walpole
Roofing**



- New Roofs
 - Re Roofs
 - Roof Repairs
 - Leadwork
 - Chimneys Repointed
 - Fascia, Soffit and Guttering
- FULLY INSURED**

Contact Richard on
07747 784742



*Beautifully
Balanced*

Your Health & Wellbeing starts
with taking care of you

Yoga can help with

- Strength, Flexibility and Mind-Body Awareness
- Physical Ailments, Recovery from Illness or Injury
- Weight Loss, Stress, Anxiety, Depression and Sleep Problems

Zoom Classes available for any age, any ability

Email hellen@beautifullybalanced.today or,
WhatsApp 07714700606

2nd Long Stratton Brownies



During December the Brownies have been very busy making various crafts.

First they made Christmas cards for the residents of Harker House as unfortunately we were unable to visit them again this year.

They also made Snowmen Tree decorations to take home, edible Christmas puddings and Christmas trees.

All the Guiding groups, Rainbows, Brownies, Guides and Rangers, got together for a Christingle Service in the Congregational Church led by Pastor Malcolm Simpkin. No parents attended this year due to Covid restrictions but it was still a special time and all the girls held a lighted Christingle singing Away in a Manger.

A special well done to Amy who has gained her Gold theme award this term after re-making her promise, teaching the Brownies to make a finger-knitting friendship bracelet and chatting to Guides and Rainbows at our recent Christingle so learning about other sections. Amy completed all six theme awards and gained her Local history, Aviation, Grow your own, Baking, Jobs and Charities interest badges over the last three years. We wish Amy well as she moves up to 1st Long Stratton Guides in the New Year.

The Brownies and Guiders would like to wish all readers of the Sexton's Wheel a very Happy New Year.





At The Mayfields Care Home, we believe in a healthy, active lifestyle – one in which our residents can feel like winners. That's why we personalise each day to meet the individual activity needs of our residents and their families.

And hearing their laughter is music to our ears.

www.castlemeadowcare.co.uk

The Mayfields

SWAN LANE, LONG STRATTON, NORFOLK, NR15 2UJ
CALL 01508 535 500 TO ARRANGE YOUR VISIT



RESIDENTIAL CARE | DEMENTIA CARE | RESPITE CARE | SHORT BREAKS



ANTHONY JAMES BRICE
CHARTERED CERTIFIED ACCOUNTANT

◆Tax ◆Accounts ◆Audit

**Small and Medium Sized Businesses, Self
Employed Individuals, Clubs and Charities**

*No-obligation free initial consultations, fixed competitive fees
and personal service*

T: 01379 608558 M: 07592 146144

E: anthony@ajbriceaccountancy.co.uk

W: www.ajbriceaccountancy.co.uk

The Old Forge, The Street, Pulham St Mary, Diss,
IP21 4RD.

Contact Care

Personal Lifeline
Alarms



A Contact Care lifeline provides
you with help and reassurance at
the touch of a button

Installed by us throughout East
Anglia

Just £3.70 a week &
an installation fee of £40



0800 917 4680



Last term our Beavers completed a number of activities on the theme of autumn which gave us the opportunity to be outdoors as much as possible. This finished with them getting creative making decorations using the colours of autumn for our 'Autumn Christmas Tree' as part of the Long Stratton Community Christmas Tree Festival. Some of our Beavers used this theme as an opportunity to complete their Photography Badge at home too – with some brilliant results!

Our Tuesday Cubs worked on their Astronomy badge learning about the stars & planets, while our Friday Cubs took on the Naturalist badge. This saw them identifying types of tree from their leaves, types of British birds, creating bird feeders ready for the colder months, and photographing the changes in the environment as we went through the autumn months. Both our Cubs packs finished in December by making Christmas cakes which they made at Cubs, then cooked at home & finally decorated at Cubs the following week ready to share with their families over Christmas.



Scouts worked on their Model Maker over a few weeks last term using the Warhammer Packs that had been gifted to us via Warhammer who sponsor the Scout Badge. Our Scouts had to the opportunity to assemble & paint a couple of models, before we had a go at playing a simple version of the Warhammer game

using our models in patrols. We were very impressed with the effort the Scouts put into with this activity which was for many a new skill they had not tried before - well done!

Our Explorers had an opportunity to go Paddleboarding last term which was a new experience for many. It was a great session with the Explorers trying out various positions and challenges set for them – definitely an activity for our programme again in the future. The Explorers also planned their own evening hike around the local area which they then navigated successfully the following week. They also had a go at some international cooking with recipes from Brazil, Taiwan and Sweden.

Peter (Group Scout Leader)





- All makes and models
- Insurance approved
- Small dents to major repairs
- Tyres at competitive prices
- Vehicle sales
- Courtesy cars available

Where quality counts!

01508 535888

Unit 2 | Robert Harvey Way
Tharston | NORWICH | NR15 2FD
www.ymark.com | info@ymark.com



Family Run, Private Hire Taxi
Based in Long Stratton

Offering a friendly, reliable service
Short and Long Distances
Airports and Stations
Courier Service
6 and 8 seaters

It is highly recommended to
pre-book

Please call or message on
07464736667
Or visit www.kandjcars.co.uk

JIMMY BURT PLASTERING SERVICES

Over 30 years experience
Accredited by Norfolk County
Council Homecall

All plastering work undertaken

- Internal & external
- plastering rendering
- reskimming over Artex,
- dot & dab plastering
- patch up work
- Insurance work undertaken

Free quote
Friendly service



01953 713855 - 07833 965606
jimmyburtplasteringservices@gmail.com

ARE YOU LOOKING FOR:

Dog Boarding **Dog Walking**
Pet Sitting

If so contact Jane on :
07561106701

**Long Stratton, Norwich &
Surrounding areas**

Also offer house sitting and security while
people are away from home.
Police checked - Reference on request

At the time of writing the Guides were in their final week before the Christmas break. There was a continuation of our theme for our Christmas tree which formed part of the Christmas tree festival in St Mary's church in the run up to Christmas. Our tree was made from cardboard and the decorations made from recycled crisp packets and bottle tops. It was our attempt at an eco-friendly tree.



Additionally, the Guides all made their own wreaths. These were very good and a lot of fun was had making them. We're sure many of you will have seen the wreaths hanging on people's doors.

The last meeting before the Christingle service was a party night and the Guides played lots of games and enjoyed eating crisps and cake. It concluded with a celebration of badges earned by each Guide during the term. Special mention goes to Asha who was awarded the 'Girlguiding Hero Award' for her bravery and composure when forced to deal with a real life and death situation. The award was well deserved and congratulations were extended from all units to Asha.

We look forward to informing you of all our exploits and adventures in the New Year and hope all the community stays safe and warm.

The Guide Leaders



Susan Whymark Funeral Service Ltd

Independent and Family Run



Susan Whymark Funeral Service

Independent, Family Run Funeral Service

*serving Eye, Harleston and the
surrounding areas Since 2004*

Contact Kelly Williams

Ley House, 11a London Road,
Harleston, Norfolk, IP20 9BH

Tel: 01379 851253 (24hr)

Email: Kelly@susanwhymark.co.uk



Contact Mandy Porter & Joanne Rowe at
Chestnut House, 12 Progress Way,
Eye, Suffolk, IP23 7HU

Tel: 01379 871168 (24hr)

Email: mandy@susanwhymark.co.uk or
joanne@susanwhymark.co.uk

See our customer reviews at

www.susanwhymark.co.uk Email: susan@susanwhymark.co.uk



LONG STRATTON & DISTRICT WI

November and December were very busy months for our members. November was the month of our annual general meeting when the year's undertakings were tidied up and new members welcomed on to the Committee. The remainder of the time was a social evening ending with a Silent Auction of items donated by members.

We had a stall full of cakes, jams, marmalade (orange and lemon) and chutneys at the town's Christmas event on Friday 3rd December. Fortunately we were inside the Firestation and the weather was far less blowy than last year.

Thank you to everyone who supported us, members baking or visiting and customers young and older.



The next day the Christmas Tree Festival started in St. Mary's Church and we had decorated our tree with hearts and decorations made by our members. Many people think we all do crafts and cooking, but whilst some enjoy these activities there are lots of other opportunities in belonging to the Women's Institute.

In the year ahead we will have a speaker at most of our meetings on subjects as diverse as origins of nursery rhymes, travel, therapy animals and recycling, to name a few. There will be a garden party in the summer and a Christmas party in December and hopefully

an outing. Then there are events all Norfolk W.I.s can enjoy such as a watercolour painting course, Jig-Saw races, bridge and mahjong days. As this is going to print some members are looking forward to a day trip to Blenheim Palace to enjoy their festive decorations.



Locally, in Long Stratton, our ladies are a friendly group and very sociable. Please be assured you are very welcome to come along to one of our meetings and meet everyone. We meet in

Long Stratton Village Hall on the third Wednesday of the month at 7.30.pm. Further information can be obtained from the Secretary on 01508 531154. We look forward to seeing you.

HAPPY NEW YEAR

**For a limited time, join us now and
receive a £300 bonus!***

We're hiring

Harker House, Long Stratton

**We have a number of positions available at Harker House,
our Care Home in the heart of Long Stratton, Norfolk.**

- **Care Support Workers**

£9.60 - £10.15 + competitive enhancements

Benefits include:

- ✓ competitive rates of pay
- ✓ professional and in-house training
- ✓ clearly defined career development

Apply on our website today

norsecarecareers.co.uk

Contact us:

Recruitment Team

01603 894695

Harker House Team

01508 500980



*£100 will be payable at three months, a further £200 will be payable at six months. This is subject to successful performance, sickness reviews and completion of successful probation period. You will not be eligible for this bonus if you are currently an employee of the Norse Group.



Janette: a key part of the Howards team.

Janette, is well known in the town having worked for Howards for 25 years. Throughout lockdown Janette has continued to support her local clients and seen first-hand the benefits of being able to work flexibly from home.

"Now is exactly the time to be responding to our customer's needs," explains Janette. "For me this means not being tied to an office, but being out in the area meeting my clients when it suits them.

"I've been selling houses in this area for a quarter of a century and now I'm selling houses for my clients' children as well. I'm not going anywhere, so my reputation depends on me delivering an outstanding service at all times and that's exactly what I'm going to do!"

But don't just take our word for it; listen to what her existing customers have to say:

G ★ ★ ★ ★ ★

I have found Janette and Hayley to be both very professional, polite and kept me informed every step of the way. I have only dealt with Janette in person and she couldn't be more helpful, ten out of ten in my opinion. Keep up the good work. M. L., August 2021

G ★ ★ ★ ★ ★

I've rarely had such a kind, professional, caring and timely service from an estate agent's. I have felt treated as a valued client, not a potential fee. The difference that makes is huge, as looking for and selling your home is very emotional and kindness goes a very long way. They're stars and I want to publicly thank them for everything. C. C., August 2021

Call Janette Churchill
Partner & Long Stratton Property Expert
T 01508 532 244 E janette.churchill@howards.co.uk

HOWARDS
Estate Agents since 1926
LONG STRATTON

THURSDAY CLUB

Happy New Year

We had to make some last minute changes to our Christmas party held on Thursday December 9th. Even so an enjoyable afternoon was spent. We started with business closely followed with our take on pass the parcel. We certainly needed our refreshments kindly served by Val and Marianne. Our Christmas quiz provided by Carol was won by Liz, Annie and Shirley. Best Christmas jumper was won by Sylvia. The chairman gave out the 'secret Santa'. We finished the afternoon with an old tradition of the Thursday club singing the Twelves days of Christmas and We Wish You A Merry Christmas.



New year, new beginning

Christmas celebrations may be over, the decorations may be down, but in the church, it is still Christmas. Nativity scenes tend to include the wise men with their three gifts along with the Shepherds at the stable. But the wise men came after Christmas, and this is remembered on 6th January, at Epiphany, which means revealing, or showing. It's a reminder that Christmas isn't really over, because it is the start of something - the life and work of Jesus on earth. He grew up, and he had a mission to fulfil - to bring us closer to the God who is his Father. The start of a new year can be a time for reflection, and resolutions (if you make them). Perhaps this new year, after nearly two years of the Covid pandemic, might be a particularly good time to reflect on our lives and on what the future may hold for us. Could learning more about Jesus and why he came into our world be part of that?

May you have a happy, healthy and blessed 2022

Revd Elisabeth Spry



Aspire Homecare offers home based support to enable people to continue living independently in their own home. Our services include:

- Shopping
- Local transportation
- Meal preparation
- Housework
- Gardening
- Professional carpet cleaning
- Accessing the internet
- Days out of your choice

Or just need a friendly face for a cup of tea and a chat

Please give **Nicky** a call today. We can create an individual support package that will suit your needs.

M: 07917 735 415

E-M: info@aspirehomecare.co.uk

www.aspirehomecare.co.uk



R.F. CHIMNEY SWEEP SERVICES

- All Types Of Domestic Flues & Chimneys Swept
- Bird Nest Removal
- Certificate Issued
- Smoke Checks Conducted
- Power Sweeping Available
- Fully Certified & Insured

Call Rob Foreman on:

07584 433527 • 01508 535934

www.rfcss.co.uk • email: info@rfcss.co.uk



Why not use this space to advertise.

We offer:

1/4 page

1/2 page

whole page.

at competitive prices. Why not give us a call on **07557990169** to chat about it or email:

thesextonswheel@googlemail.com

PAUL LOVETT REPAIRS & SERVICING

**Home Appliances and
Garden Machinery**

07999 355267

E: lovett.repair@gmail.com



Covering South Norfolk
& North Suffolk
20+ years' experience



MKL SERVICES HANDYMAN NORWICH

Trying to find a Handy Fixing Service in Norwich? Get in touch with MKL Services, The Reliable Handyman. We offer a selection of services including Plumbing, Tiling, DIY, Carpentry, Kitchen Fitting, Bathroom Installations, Blind/Curtain fitting and more.



EMAIL US AT: MKLSERVICES@ICLOUD.COM
CALL US ON: 07946774775

All services provided will adhere to social distancing rules and government guidelines regarding Coronavirus (COVID-19).

ASSET Investment Management

wealth management specialists

FREE first meeting
Experienced, confidential financial advice
Retirement and pension help
Investment specialist
Need income or growth? – we can help

Beech House, Norwich Road
Long Stratton NR15 2PG

01508 536795

kevin@asset-im.co.uk
www.asset-im.co.uk

Authorised and regulated by the Financial Conduct Authority.





**BASED
LOCALLY
FOR YOUR
CONVENIENCE!**

- All makes and models of cars, vans and trucks serviced.
- MOT Preparation.
- Brakes, clutches, exhausts.
- Tyre supply and fitting service at competitive prices.
- Cam belts.
- Welding.
- 24hr Recovery.
- Courtesy car available.
- Friendly professional service.

Tel: 01508 489066
24hr Recovery: 0779 664 1881

Mark's Vehicle Services, Unit 1, Red House Farm,
High Road, Forncett St Mary, Norwich, NR16 1JR.

Open Monday-Friday 8 til 5:30. Saturday 8 til 1.

All major credit cards accepted 

ACE PLUMBING DAVID MILLWARD

Established 1980

NEW TO THE AREA

Reliable, honest, quality
workmanship.

Specialising in heating system
problem solving and all other
plumbing.

Walnut Tree Cottage - Silver Green
Hempnall - NR15 2NL

plumber1.dm@gmail.com

01508 498005/07763 359313

www.aceplumbingnorfolk.co.uk



Garden Landscape Services Ltd

(Wacton)

*The **complete** landscaping service!*

-
- Fencing ● Mowing ● Paving ● Clearances
 - Decking ● Turfing ● Hedge cutting ● Pathways
 - Grounds maintenance ● Tree work ● Planting *and more!*
-

Contact us for free quotations and advice...

(01508) 807567 • 07749 130872

enquiries@glsonline.co.uk

f @GardenLandscapeServicesLtd

www.GLSOnline.co.uk



A NEW SMALL FAMILY BUSINESS IN LONG STRATTON SPECIALISING IN QUALITY SWEETS & TREATS. WE HAVE A GREAT SELECTION ON OFFER INCLUDING..

- OVER 230 DIFFERENT SWEETS
- MOVIE NIGHT BUNDLES
- CHRISTMAS SWEETS & TREATS
- PICK & MIX SWEETS FROM £1
- CREATE YOUR OWN MIX
- FUDGE, CHOCOLATE, CRISPS & SNACKS
- 30 DIFFERENT SWEET MIXES
- DIETARY SWEETS
- SWEET POUCHES & JARS
- GIFT BOXES & DECADE BOXES
- NEW & VINTAGE GIFTS
- RETRO TUCKSHOP SWEETS & MUCH MORE..

AT MR HARES WE HAVE SOMETHING FOR EVERYONE.
SIGN UP TO OUR NEWSLETTER AND FOLLOW US TO DISCOVER EXCLUSIVE OFFERS,
DISCOUNTS & MORE

A WONDERLAND FULL OF TASTY DELIGHTS & FREE DELIVERY WITHIN A 5 MILE
RADIUS OF LONG STRATTON (£10 MINIMUM SPEND) OR NATIONWIDE DELIVERY TO
YOUR DOOR

WWW.MRHARESSWEETTREATS.COM

CHICKEN Planet
KEBAB - PIZZA - CHICKEN - BURGER
01508 536337

BARGAIN BOX
 6PCS CHICKEN
 6 SPICY WINGS
 6 NUGGETS
 3 CHIPS
 & COLESLAW
£18.00

**SPEND £20
 AND GET FREE
 DRINK**

**WE ARE
 HERE**

THE STREET A140
 SWAN LANE
 CO-OP
 CAR PARK

OPENING TIMES: Mon - Sat 2.30pm - 9.45pm - Sunday Closed
Kestrel House The Street Long Stratton NR15 2XJ
 (entrance located in Car Park in front of the CO-OP)



The Borderhoppa 2022 outings leaflet is now available. We have many trips arranged throughout the year including pub lunches, garden centres, the coast, mystery tours, boat trips and many more. You can pick up a leaflet at your local library, information centre, GP surgery, from one of our drivers or by calling the office.

Need help with transport? Borderhoppa buses are available to people of all ages who are unable to use ordinary bus services either because of mobility difficulties or because there isn't a bus service available for them to use.

Our door-to-door dial a ride service can take you shopping, to medical appointments (excluding hospitals), to visit a friend or relative or attend a local club.

If you would like to find out more about the great service we provide please call us on **01379 854800** or visit our website **www.borderhoppa.org**

The Outline of our Village Past

The Eighteenth and Nineteenth Centuries

Our village was born in the main because of its position on the Roman road from Colchester to Caister near Norwich. For the same reason it owes its existence as a thriving community to this day. However, in terms of local trade it probably saw its heyday during the eighteenth and nineteenth centuries, before the coming of the motor car.

Evidence of the importance of the village can be seen by looking at the number of services provided here. Saddlers, Wheelwright, Gunmaker, Clock and Watch makers, Surveyors, solicitors, Lawyers and so the list could go on until as many as forty or more services have been listed. Also should be remembered are the thriving stock and general markets. Needless to say, then the village had a large wealthy section of the population.

One aspect of this that affected the rest of the population is the large number of servants employed by the wealthier people. Being an agricultural area, we might expect large numbers employed on farms, and indeed there were, but as many were employed as servants.

Harsh

There were also many poor, and we catch a glimpse of the harshness of life for these people in the records. Reference to paupers is common. Infant mortality was extremely high, with as many as 25% of children dying before their first Birthday, and many before reaching adulthood. Epidemics of smallpox hit the village throughout the eighteenth and nineteenth centuries, as indeed they had done in centuries before. Sad little notes are written in the burial records of the times, by the rectors, telling how families were hit by the disease.

Before Hill House

The poor were given some help by the overseers, who decided weekly how much and to whom help should be given. There was a stock of parish linen which was used for the poor, say for sheets or clothing, which the poor would make for themselves. In 1797 a house was purchased at Wood Green for the reception of the poor, but in 1836 this was no longer required as the Depwade Guardians built the poor house (Workhouse) at Pulham crossroads, to which the Long Stratton poor were sent.

The children of the poor were 'farmed out', that is, they were taken from their parents and housed with other families who were paid a small sum to keep them. Many of us will have read of the corruption surrounding this practice and of the misfortune that befell some of these poor children.

Many changes were taking place in the village during the eighteenth and nineteenth centuries, and in the next part of the story we shall have a look at some of these.



The house bought on Wood Green was for the overseer of the poor and there were five cottages for the poor families. The Poor Law Amendment Act of 1834 changed the system whereby each parish was responsible for their own paupers. The provision of the purpose built workhouse meant the poor now had to go into the workhouse so the house and cottages in Wood Green were no longer used and were sold by Depwade Union in 1850.

The Depwade Poor Law Union was formed on 14th April 1886. The new brick built workhouse was built at Pulham Market at a cost of £8,240. It was designed by William Thurgold who designed other Norfolk workhouses. The workhouse was built to house five hundred people, but the average number of people housed in it was 170. It housed poor people from all the surrounding villages.

In 1844 the inmates tried to burn the workhouse down. When they arrived at the workhouse the families were split up and were housed in separate wings for men, women, boys and girls.

The Poor House Union had to provide three hours of education a day for the children. They were taught reading, writing, arithmetic and the principles of Christian Religion. Some of the boys were apprenticed to master tradesmen and became skilled workers.

Cont page 23

METRO PLUMB
THE NATION'S LOCAL PLUMBER

**OIL
BOILER
SERVICE**
£95 +VAT

0800 415 514

HARLESTON & DISTRICT U3A

Harleston and District u3a's first monthly meeting of 2022 will be held on Wednesday 19 January at 2.00 pm in St John's Church, Broad Street, Harleston IP20 9AZ. The talk, to be given by Steve Poulter, is entitled "Supernatural Norfolk - From Black Shuck to the Yow Yows" - a tour of places where 'strange occurrences' happened, according to local folklore.

For further details, and for information about Harleston & District u3a, please visit our website u3a.sites.org.uk/harleston, or phone **Kim Poulton on 01986 788149**.

From page 21

The quality of education was probably better than some other types of school. In 1847 the salaries for a school master was £25 per annum and a school mistress was £20 per annum. Both were given board and lodging in the workhouse.

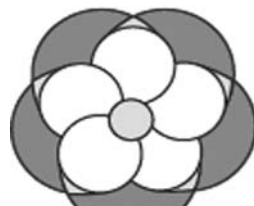
The workhouse became a Public Assistance Institution after 1930, it housed elderly chronically sick and single mothers. Later it became Hill House Hospital, then a Care Home, then SNDC offices, then a Hotel and is now flats.

Judith Baker

SCHOOLS

ST MARY'S CHURCH OF ENGLAND JUNIOR ACADEMY IN LONG STRATTON IS LOOKING FOR MOTIVATED AND DYNAMIC INDIVIDUALS TO JOIN THEIR TEAM IN THE FOLLOWING ROLES:

- Caretaker
- Academy Business Support
- Midday Supervisory Assistant



Please see <https://www.stbenets.org/working-for-a-st-benets-academy/vacancies/> or the school website for more information and how to apply.

We are committed to the safeguarding of all children, through its policies, practice and monitoring procedures. Any applicant wishing to work around children can expect to have an enhanced Disclosure and Barring Service (DBS) check.



Let's Chat has now finished for the winter months and will resume again in mid March in the usual venue of St Mary's Church. Janet and the team will be there to welcome you all back with tea, coffee and homemade cake. And as usual:

All are Welcome.

BARKER FAMILY FUNERAL SERVICES

We're all inclusive

*Family run with Family values
and Family at heart*

Provisions of all professional services, an obituary notice via social media, handling of all charitable donations, limousine, motorised hearse and bearers, 3ft coffin spray, includes all fees and choice of coffin.

Total
£3,875

The Simplistic Funeral

Total £1,590

The Street,
Long Stratton
NR15 2XJ

01508 536117

info@barkerfunerals.co.uk

www.barkerfunerals.co.uk



24 Hour Family Caring
Personal Service
Covering Norfolk & Suffolk



We will match any quote and
£50 cashback if you pay in full
before the date of the funeral



Specialists in the supply and install of new and replacement Pvc-u and Aluminium windows, doors, conservatories, secondary double glazing and roofline.
All available in a wide range of colours and styles.

Free surveys and estimates. Trade and DIY enquiries welcome.
For friendly advice and a competitive price.

E: info@moultonwindows.co.uk

W: www.moultonwindows.co.uk

01379 677730

Orchard Farm, Great Moulton, Norwich, NR15 2HA



Big enough to cope, small enough to care

mw
MOULTON
WINDOWS

CHRIS CLARKE OIL BOILER SERVICES

- Servicing
- Commissioning
- Breakdown Repairs

Servicing/Commissioning
07377 516660
Breakdowns
07912 146619



Registered

CARRY-ALL

Mel Rogers

Mob: 07850 402845

Tel: 01508 536182

e-m carry_all@btinternet.com

Suppliers of:

- Mixed hard and soft wood
- Shingle [Natural]
- Sand
- Hoggin
- Ballast
- Crushed Concrete
- Ornamental Granite Chippings
- Top Soil
- Cultivated rolled turf
- Bark Chippings
- Compost & Peat
- Plumb Slate

No VAT - Free delivery



Scan our QR Code to contact us today to book in your **FREE** sales or lettings market appraisal.



Contact us now and quote BARTONLS to receive a **£300.00** discount off our standard sale agency fee or a **Free Upgrade** to our Premium Marketing Package which includes*: -

- Professional Photography
- Glossy Brochure
- Premium Rightmove Listing

Long Stratton
01508 292090

This offer is not to be used in conjunction with any other Barton & Co promotion. Terms & Conditions apply.

Proudly Local and Independent

rightmove

Zoopla

onTheMarket

PrimeLocation.com

The Property Ombudsman

M SHEPHERD OPTOMETRIST LONG STRATTON

OPEN for Eye Exams, Contact Lens appointments and all your eyecare needs.

NOW OPEN 6 DAYS PER WEEK




OUR PROMISES TO YOU:

- WE LOOK AFTER LONG TERM EYE HEALTH
- WE OFFER REPEAT EXAMINATIONS WITH THE SAME OPTOMETRIST WHERE POSSIBLE
- WE USE ADVANCED TECHNOLOGY TO EXAMINE YOUR EYES
- WE PROVIDE OUR PATIENTS WITH THE TIME THEY NEED IN THE EXAMINATION CHAIR
- WE PROVIDE PROFESSIONAL PRESSURE FREE ADVICE

Mon-Fri 09.00-17.00

Sat 09.00-13.30

 **01508 532 669**

www.mshepherdoptometrist.com

Activity Programme

April to September 2021

Free online activity programme for 0 to 5s in Norfolk



The Early Childhood & Family Service (ECFS) is still running, offering extra help to families who need it. Right now, due to Covid-19, we're providing a programme of online activities and groups that are available to families with children aged 0 to 5 years.



Early Childhood and Family Service



Live Online Groups

Baby Days Live Online

Six weeks of free online sessions for babies with their parents/carers. Each session will have a new learning activity to try out with your baby, plus an opportunity to meet other parents and talk to knowledgeable staff. Best suited to babies who are not yet walking.

Toddler Days Live Online

Six weeks of free online sessions for under 5s with their parents/carers. A chance to meet other parents, talk to knowledgeable staff and take part in fun, learning activities.

Baby Massage Live Online

A free five week course introducing massage strokes that can help with colic and support you and your baby to feel more relaxed, whilst strengthening your bond.

Register at

tinyurl.com/ECFSevents

Sessions take place online via video call on Microsoft Teams. You only need an internet connection and a smartphone, tablet or computer to join.

If you would like to join but need help with technology, or you don't have a suitable device, please [contact us](#) on 0344 800 8020 to see how we can help.



Need extra help or someone to talk to?

We are here to help with things like:

- Becoming a first time parent
- Bonding with your child
- Parenting challenges
- Mental wellbeing
- Healthy relationships
- Learning through play
- Communication & language development



Please contact us and one of our team will be in touch.



Online form:

www.tinyurl.com/ECFSHelp

Email:

ecfs-families@actionforchildren.org.uk



New videos or themed activity posts every day at facebook.com/EarlyChildhoodFamilyService

Videos also on our [YouTube channel](#). First view on the day/time shown or catch up later



Musical Monday with Magic Acorns

A fun mini music session for you and your little one to join in with at home. Designed to help build little brains and bodies, while encouraging communication and confidence.



Monday

1.30pm

Let's Get Talking!

Ideas and activities to get your toddler talking, plus information on how the things you do with your baby, from birth, can help their future language and development.

Tuesday

11.00am

Children's Wellbeing

Tips to help you understand and nurture your child's emotional development, including how to deal with difficult situations.

Wednesday

1.30pm

Fun and Learning

A variety of indoor and outdoor activities for you to enjoy with your baby or toddler.



Thursday

11.00am

Cookalong

Step-by-step videos for easy family recipes which are fun to make together and will save you money compared to ready prepared food. No experience necessary!

Friday

1.30pm

Other activities for 0 to 5s and their families

Norfolk Libraries for Families

Weekly Online Bounce & Rhyme sessions, Story Week activities and Social groups via Zoom. Find out what's on from [Facebook](#) or www.norfolk.gov.uk/libraries



Norfolk Family Learning

Interactive 'Come and Try' taster sessions and online courses for families to enjoy together. For details and to book visit www.norfolk.gov.uk/familylearning



Norfolk Community Directory

Search for activities and services run by volunteers or other organisations in your local community. Visit communitydirectory.norfolk.gov.uk



0344 800 8020 | www.norfolk.gov.uk/earlychildhood | ecfs-families@actionforchildren.org.uk

Keep up to date with
the free
Action for Children
Services App



Courses offered by the Early Childhood and Family Service



Our courses are running online via Microsoft Teams, or in small face-to-face groups at our risk assessed bases. Extra hygiene measures are in place and we will ask you to wear a face covering, unless you are exempt.

Solihull Parenting Course

A 10 week course to help you learn more about your child's development and behaviour. What is their behaviour telling you?

Baby Massage

A 5 week course for introducing massage strokes. This can help with colic and support you and your baby to feel more relaxed, whilst strengthening your bond.

Freedom Course

A 10 week course for women who would like to look at healthy relationships and to have a safe environment to be able to discuss and understand previous and current relationships.

Triple P

An 8 week course that offers support, information and practical answers to everyday parenting concerns.

Circle of Security

An 8 week course based on supporting and strengthening the attachment between you and your child.

Our partners



Home-Start Norfolk and the community offer in your local area are also part of the Early Childhood and Family Service, and are available to support you and your family.

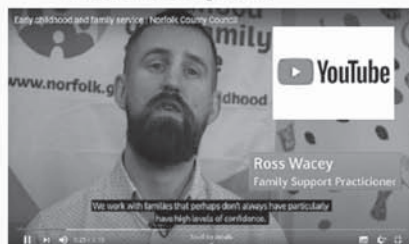
How to contact us

You can get more information on the service by visiting www.norfolk.gov.uk/earlychildhood

If you would like further information, help or support then please call us on 0344 800 8020 or email us at ECFS-Families@actionforchildren.org.uk



Any updates on services or groups can be found by visiting our Facebook pages. Search for Early Childhood and Family Service



See our video on YouTube to find out more

Useful contacts

Coronavirus Information	norfolk.gov.uk/coronavirus
Just One Norfolk (Health Visiting Team)	0300 300 0123
Leeway (Domestic Abuse Support)	0300 561 0077
Norfolk & Waveney Wellbeing Service (Mental health support)	0300 123 1503
Home Start Norfolk	01603 977040
Speech & Language Advice Line (ECCH)	01502 719830
Norfolk SEND Partnership	01603 704070
National Breastfeeding Helpline	0300 100 0212
Norfolk Police (non-emergency)	111
CGL (Alcohol & drug behaviour change service)	01603 514096
Citizens Advice Bureau	03444 111 444
Shelter (Help with housing & homelessness)	0808 800 4444
Job Centre	gov.uk/contact-jobcentre-plus
Mens Advice Line (for men in abusive relationships)	0808 801 0327

If you are worried a child is at risk please call Norfolk County Council Children's Services on

0344 800 8020
or 999 in an emergency



"Thank you Rosedale, your support and guidance made this difficult time a little more bearable."

– from a family we have cared for at Rosedale



Rosedale
FUNERAL HOME

Victoria Rd, Diss **01379 640810**
www.rosedalefuneralhome.co.uk

We are a family business and promise to provide exceptional care and a truly personal 24 hour service, when you need it most.

JUMBO BAG DELIVERIES

SAND

TOPSOIL

MULCH



BALLAST

SLATE

PLAY BARK

STONE 6/10/20MM

MUSHROOM COMPOST

**CALL 01508 470674
FOR A PRICE TODAY
Simons Landscaping Ltd**

Electrician



Local, Friendly, Reliable
N.A.P.I.T. Registered that
works on all aspects
of Domestic and
Commercial Electrics
including storage heaters

Contact Ian or Caroline

@ ICD Electrics on

**0779 0273 689 or
0788 8740 473**

E-mail: icdelectrics@hotmail.co.uk
or www.icdelectrics.co.uk

THARSTON & DISTRICT WI

We held our Annual Meeting in November and voted for a president for the next year, congratulations Gabby. We also decided on a new committee which has fewer members than usual, so I expect we will call on others to assist with various events. We do have a large number of members and I am sure that we will get many offers of help when needed. The first event of our year was a beetle drive in November, which caused a lot of laughter, and of course much noise! The only time it was quiet was when we enjoyed tea and a variety of cakes.

The festivities started early for us when we enjoyed a delicious Christmas meal at The Jolly Farmers. It was good that we had sole use of the dining room as again we were quite loud with much talking and laughter. It was good that we were able to hold a Christmas Party for our December meeting, in spite of all the worry about the new Covid variant. We took many precautions to keep our members safe and hope that we were successful. The format was quite different with no mingling and table service for food and drink. We enjoyed a quiz and several games with each table having their own 'pass the parcel'.

In January we have planned an afternoon for a Jigsaw Race accompanied by tea and cake. This is usually a quieter activity with much concentration in an often vain attempt to be the group that is first to complete the jigsaw.

Let us hope that the vaccinations that the majority of local people have had, will keep us all safe and allow us to enjoy our usual activities.

Heather Jeary

Come and join us for.....

The next **Messy Church** is on **Saturday 29th January**
Starting at 9am with breakfast from 9am until 10.45am



in St Mary's church



Long Stratton Messy Church

Just come along and join the fun - Everyone welcome!

Happy Feet



Qualified Foot
Health Professional

Treatment of corns, calluses,
nail infections and much more.

To arrange a home visit please call
Wendy Latoy MCFHP, MAFHP on

01379 676872
or **079 2345 4646**

PHILIPPA GREEN WEB DESIGN

**Bespoke & Affordable Web Sites
Built For You**

**Mobile Device Friendly Screen
Width Responsive**

**Domains, Hosting, Email,
Shop, Self-Updating &
Standard Web Sites**

**Over 14 Years Experience
Promoting Small Businesses**

01508 532670

admin@philippagreenwebdesign.co.uk

www.philippagreenwebdesign.co.uk

NO VAT - Fully Insured & Qualified

Funeral
Services

East of
England
COOP

Here for you
every hour
of every day

8 The Precinct,
Ipswich Road, Long Stratton
01508 448138

www.eastofengland.coop/funerals



Chapel Doors

LIMITED

**AUTOMATIC GARAGE DOOR AND
GATE SPECIALIST**

INSTALLERS OF ALL TYPE OF
GARAGE DOORS,

UP AND OVER, SECTIONAL, ROLLER AND
SIDE HUNG. AWNINGS.

SLIDING & SWING GATES, UNDERGROUND
OR OVERGROUND UNITS.

FAST SERVICE ON REPAIRS
25 YEARS EXPERIENCE

Tel: 01379 651959
www.chapeldoors.co.uk

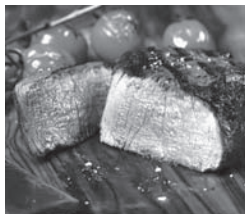
NETHERTON STEAKHOUSE

The Street, Long Stratton NR15 2XG www.nethertonsteakhouse.co.uk



**Great menu for all to
enjoy inside or
outside dining**

17th Century inside plus
heated pagoda and
garden outside



FULL FOOD MENU

Wed eve: 5pm-9pm

Thu, Fri & Sat:

12 noon-9pm

Sunday: 12 noon-5pm

including full roast option



See Facebook
or phone **01508 531500**

**TO BOOK EMAIL
enquiries@
nethertonhouse.co.uk**

WACTON FOOTCARE

The next session of Wacton Footcare will take place on Tuesday 18th January and, as before, anyone who already has an appointment will have this confirmed beforehand. Should anyone be considering a first appointment for Footcare please feel free to call either of the numbers below for further information and/or to book an appointment.

The contact numbers are ---

Clare --- (Footcare Specialist) --- 07785 295358

Rita --- (for further information or to cancel an appointment) --- 01508 218407

HAPPY NEW YEAR 2022 TO YOU ALL

WACTON COFFEE MORNINGS

Happy New Year to everyone! We hope that we will be able to continue with our Coffee Mornings on 4th and 18th of January but will, of course, have to be guided by any new covid regulations that may come into force. We look forward to getting together again then.

The plight of the four Parish officials who sold Wacton's Poor Cottages

by Robert Maidstone

In 1834 Parliament passed the Poor Law Amendment Act, this act transferred the responsibility of each parish to provide relief to its own poor to 'Unions of Parishes governed by a Board of Guardians who were to set up their own workhouse to house the local poor. The Act also abolished 'outside relief,' financial support given to the able-bodied, often during times of illness or injury or lack of seasonal work, to compel them to work.

The Depwade Union built a new workhouse on the A140 at Pulham, and Wacton's poor were to be transferred there from the Poor Houses, then standing on the north edge of the Green, the site of Victoria Cottages. The parishioners would still pay rates but to the Union, and the parish overseers of the poor and church wardens of Wacton had to sell the Poor Houses and give the money to the Union.

As it was the overseers and church wardens who had to move the poor they became a target for local frustration and there was much national unrest. Arson attacks, animal maiming and property destruction was perpetrated against those who appeared to be supporting the new Poor Law system.

Wacton's parish officials at the time were John Webster and Charles Harvey, the church wardens, and William Weston and John LeGrys, the overseers of the poor.

The first of these officials recorded as being the victim of some unrest was William Weston, a tenant farmer, living at Grange Farm who on the 25th August 1836 had someone enter his stables. The miscreant cut several harnesses into pieces and "barbarously wounded two valuable horses". The event was briefly reported in the Norfolk Chronicle a few days later.

The next recorded incident occurred at Hill Farm, occupied by Charles Harvey, on 31st December 1844. About nine o'clock in the evening Mr Harvey discovered one of his stacks on fire and trails of combustible material led to other stacks. Despite the farm's isolated position several neighbours turned up and the blaze was contained to the one stack. The event was again reported in the Norfolk Chronicle

That this event was not an isolated incident could be the reason that Charles eldest son, Henry, born in 1836, was not recorded in either the Census of 1841 or 1851 as living at Wacton. On the 2nd June 1844 Charles, aged 29, died of 'decline' and was buried not in Wacton where he lived, nor Pulham where he was born, but Norton in Suffolk the parish where his wife came from. His youngest daughter Alice, was baptised on the 30th June 1844.

The Harvey family suffered again in July 1851 when early in the morning the thatch of the farm house was discovered alight. This time the Stratton fire brigade were not fast enough in arriving to prevent the roof collapsing and destroying the house. This fire was assumed to be due to a spark from the chimney. Fortunately the house and contents were insured and the house was promptly rebuilt.

The third event that affected one of the officials related to John Webster, who had been the tenant of Church Farm in Wacton from his marriage in 1835 and until some time around 1846 when he moved from Wacton, and took on a lease of a farm in Pulham, not far from the Wacton Duke on the A140. The landlord was Rev E Burroughes who had let the sporting rights separate from the land.

On the morning of the 8th July 1849 John Webster left home but did not return and the next day was found hanging from a tree not far away. At the inquest on 10th July his employees stated that Mr Webster had been depressed by the extent of damage to his crops by ground game, hares and rabbits, and winged game. The damage was such that some fields had hardly been worth harvesting. Mr Webster had approached his land lord for redress, presumably a reduced rent but had been refused. The inquest's verdict was that he "hung himself in a fit of temporary insanity brought on by the losses he had received". Interestingly no reference to neighbouring farmers having similar problems is mentioned.

The fourth of the parish officials, John LeGrys, does not appear to have been subject to any disturbances, at least he reported nothing that made the papers. He was another farmer but owned his land. In a history of the LeGrys of Wacton written by the family it is suggested he drunk a bottle of whisky a day and his children tended to disperse once grown up and shows him likely to be someone who was unlikely to be intimidated.

Whether these events were linked is not known but so far I have not discovered any other similar events affecting others in Wacton.

WACTON CHURCH COFFEE MORNINGS

Wacton Church holds a coffee morning every month (the second Saturday of each month) at 10.30 am,

The next coffee morning will be on Saturday 8th January 2022!!



All are welcome

LOCAL WALKS

It was grey and overcast as we set out walking East from Morningthorpe church, but it was good to be in the fresh air out in our gentle countryside once again. The late autumn fungi were still visible on some of the trees as we came out of the churchyard and into the fields, heading in the direction of Fritton Common. The path went from the open field through an archway of trees, and on until we reached the road bordering



the common. We crossed the edge of the common and continued onto the water meadows along the stream running north south and there we turned left and followed the stream, which was surprisingly dry underfoot.

We negotiated a couple of wooden bridges and stiles, one of which was at the top of a very steep and slippery bank, but it didn't deter us intrepid walkers, and on we went turning west along the footpath back in the direction of Beech Farm.

We reached The Street, we turned left and walked for a short distance along the road until we met the drive that led us to Fritton Church. A lovely old church with some medieval



wall paintings, and then we continued through the churchyard on the footpath which took us left then left again to rejoin The Street and onto Fritton Common once again. This added a little extra onto the walk, but meant we didn't have to walk along the road.

At the point of the common we turned right onto the lane which led us back to Morningthorpe, usually a very quiet road, but we managed to find it's rush hour and were passed by 4 cars before we reached the left turn back to Morningthorpe Church and our transport.

Not a minute too soon, for as soon as we got in the car the rain and wind, promised by the forecasters, arrived and would have soaked us had we not timed to perfection our walk. So another refreshing morning and we look forward to the next one, in 2022. So Merry Christmas to you all and a very happy and healthy New Year.



The next walk will be on Monday 3rd January, meeting at 10.00am in the Co-op car park.

LONG STRATTON LIBRARY

We're working to restore our services at Long Stratton Library. Here's what we have up and running:

1. Browsing and borrowing, in both the adult and children's libraries, including reservations
2. Our table and chairs are back, so you can sit comfortably in the branch again
3. PCs for customer use, including printing and copying services
4. Just a Cuppa on Mondays from 11am - and we're recruiting for a regular volunteer, contact library for further info
5. Bounce & Rhyme on Tuesdays at 2pm
6. Stitches & Knitters on Thursdays at 4.45pm

We'll be working on other offers and activities through the autumn, including for children, and you can keep in touch with us on Facebook by searching for 'Diss, Harleston and Long Stratton Libraries'. You can also call us on 01508 530797 with any questions.

We've also restored our usual staffed opening hours - please note that Open Libraries is unavailable for the time being.

1. Monday 11am-7pm
2. Tuesday 1-7pm
3. Wednesday CLOSED
4. Thursday 1-7pm
5. Friday CLOSED
6. Saturday 11am-4pm
7. Sunday CLOSED

We hope to see you soon!



Norfolk
County Council

CHURCH SERVICES - JANUARY

2nd January - 9.30am - Holy Communion - Wacton
11.00am - All Age Worship - St Mary's

9th January - 11.00am - Holy Communion - St Mary's
3.00pm - Evening Prayer - St Michael's

16th January - 9.30am - Morning Prayer - Wacton
11.00am - Morning Worship - St Mary's

23rd January - 9.00am - Holy Communion - St Michael's
11.00am - All Age Holy Communion - St Mary's

30th January - 10.30am - United Celebration Service - Wacton

Congregational Church Services

Sunday 2nd January at 10:45am – Family Service incl. Holy Communion – Rev Ian Jones

Sunday 9th January at 10:45am – Family Service - Pastor Malcolm Simpkin

Sunday 16th January at 9:45am – Community Family Breakfast

Sunday 16th January at 10:45am – Family Service - Rev Ian Jones

Sunday 23rd January at 9:45am – Monthly Prayer Meeting

Sunday 23rd January at 10:45am – Family Service - Mr Colin Basham

Sunday 30th January at 10:45am – Family Service - Pastor Malcolm Simpkin

From the Parish Registers

We offer our deepest sympathy to the family and friends of:

Kenneth George Netting - 30th November, St Mary's

THE SEXTON'S WHEEL

If you have something to tell us, an event coming up, an article of interest please contact us **email: thesextonswheel@googlemail.com**

tel: 07557 990169

or send to the **Parish Office** 8 Flowerpot Lane, Long Stratton, Norwich NR15 2TS using the form below.

If you would like to advertise any Community Events this is free and we can tell over 2200 households

Editorial: If possible all editorial to be sent by e-mail. This saves time putting the magazine together and more importantly this would ensure names of people etc are spelt correctly. **Deadline for editorial is the 11th of the month**

Images: Any pictures you may have to accompany editorial would be welcome. Please send these as jpgs not embedded in a word document.

Adverts: Advertising rates per issue: -

Quarter page(6cm x 9cm)	£19.20	Half page (13cm x 9cm)	£33.60
Full page (13cm x 18cm)	£60		

Market Place: Advertise items for sale or wanted for £5 per item per issue. maximum 30 words. This is not for commercial items but private adverts only. There is a maximum selling price of £500 for goods and the editorial team reserve the right to refuse any advert they feel unsuitable. The Sexton's Wheel will not be held responsible or enter into correspondence for any transactions between the buyer and seller. No logos or pictures

Deadline for adverts is the 5th of the month

Fixed charge of £10 for designing and re sizing any advert supplied - we will inform you when the advert is submitted if there is to be a cost incurred. No charge for change of wording if supplied as word document.

ADVERTS and DISTRIBUTION OF MAGAZINES - Ian Hetherington
07557 990169 thesextonswheel@googlemail.com

EVENT _____

DATE _____

TIME _____

PLACE _____

BRIEF DETAILS _____

CONTACT _____

New home in 2022?



Rachel, Chloe, Lene and
Alex are here to deliver

Call us now on

T 01508 531331

Whittleby Parish
Your move all wrapped up

T 01508 531331
E long_stratton@whittlebyparish.com
W www.whittlebyparish.com
Beatrix Potter Cottage, The Street, Long Stratton, Norwich NR15 2XJ

