

The magazine for Long Stratton & Wacton



Long Stratton Town Council invite you to a summer event to celebrate the Queens Platinum Jubilee!

Saturday 4th June 2022

11am until late

Manor Road playing fields, Long Stratton

Food outlets • Live music • Free games to play

Magician • Bar • Stalls • Community games
(more info inside)

Tombola • Tug of war • Photo booth

June 2022

Long Stratton Village Hall - Booking Information



The hall can be booked as follows:

Via our facebook page, search Long Stratton Village Hall

Via our website www.longstrattonvillagehall.org.uk

Email us at longstrattonvillagehall@outlook.com

Call Kirsty Dye on 07986942804 and leave a message

Hire rates from as little as £7.50 per hour.



Wacton Village Hall - Booking Information

Attractive and welcoming community space available for hire: hall or meeting room

Hire rates start at £6.00 per hour. To book go to wactonvillagehall.co.uk

Email: bookings@wactonvillagehall.co.uk, or Tel: **Angie Baldwin 01508 536639**

Church Contacts

St Mary's Chrissy Briggs - (01508) 536724

St Michael's Rosemary Bennett - (01508) 530296

All Saints' Angie Baldwin (01508) 536639

Congregational Church June Braddock (01508) 470701

Church Parish Office

Due to current restrictions the Parish Office is not open. The Parish Administrator, Marianne, can be contacted on LSTpilgrimteam@outlook.com

If you know of anyone who is unwell or would benefit from a visit from a member of our ministry team, please contact the team vicar: Revd. John Madinda on 01953 789240.

Long Stratton Town Council, The Pavilion, Manor Road, Long Stratton

Usual office hours are Monday, Tuesday and Thursday between 10am and 1pm and
by appointment at other times.

Tel: Clerk Becky Buck 01508 530524 E-mail: clerk@longstrattoncouncil.info

The Editors reserve the right to edit or decline any material submitted for publication. While every effort is made to ensure that the contents of the magazine are accurate, no responsibility can be taken for errors and omissions. The material printed does not necessarily represent the views of the magazine committee and no recommendation of products or services is implied. While the committee take reasonable care when accepting advertisements for publication, it cannot accept responsibility for any unsatisfactory transactions. Errors and omissions excepted.



Congratulations to Her Majesty Queen Elizabeth II on her platinum celebration. Lets hope the weather is good so all the planned celebrations can go ahead.

The Sexton's Wheel Team

- | | |
|---|---|
| 2. Booking information Long Stratton & Wacton Village Halls.
Church Contacts.
LSTC opening hours. | 31. Wacton Footcare.
Wacton Coffee Mornings. |
| 5. Jubilee Celebrations. | 32. Catching up with the Cotmans. |
| 6. Thursday Club.
Quiz Evening. | 33. Wacton Events. |
| 7. Long Stratton Brownies.
Deliver Sexton's Wheel. | 35. Wacton church coffee morning.
Events in Wacton. |
| 9. St Mary's Church at Risk. | 36. Local Walk in May, |
| 19. Long Stratton WI. | 37. Long Stratton Library. |
| 20. Long Stratton Medical Partnership. | 38. Church Services.
From the Parish Register. |
| 21. Borderhoppa.
Messy Church.
u3a.
Let's Chat. | 39. Contact details & information on
the Sexton's Wheel. |
| 22. Long Stratton Town Council. | |
| 25. Community Update. | |
| 27/28. Early Childhood Family Service. | |

HOMEFRONT

*Handyman Maintenance
Services*

- Bathroom & Kitchen refurbishment
- Painting & Decorating
- Plaster Repairs
- Carpentry
- Plumbing
- Disabled Access work
- Garden Services

John Johnson

01508 531021 • 07958 606637
johnnyxj@yahoo.com

KENT SKIPS

WE COVER SOUTH NORFOLK & NORTH SUFFOLK

*** PROMPT & RELIABLE SERVICE**

*** NEXT DAY DELIVERY**

*** LARGE OR SMALL LOADS**



Yew Tree Farm, Pulham Market, Diss, Norfolk, IP21 4XN

info@kentskips.com
www.kentskips.com



**Richard
Walpole
Roofing**



- New Roofs
 - Re Roofs
 - Roof Repairs
 - Leadwork
 - Chimneys Repointed
 - Fascia, Soffit and Guttering
- FULLY INSURED**

Contact Richard on
07747 784742



*Beautifully
Balanced*

Your Health & Wellbeing starts
with taking care of you

Yoga can help with

- Strength, Flexibility and Mind-Body Awareness
- Physical Ailments, Recovery from Illness or Injury
- Weight Loss, Stress, Anxiety, Depression and Sleep Problems

Zoom Classes available for any age, any ability

Email hellen@beautifullybalanced.today or,
WhatsApp 07714700606

Jubilee Celebrations

Excitement has been building for this month when we have a unique celebration long weekend. The Queen's Platinum Jubilee will be the first and almost certainly the last time a monarch celebrates 70 years on the throne. Events are happening in Long Stratton and Wacton, along with others all over the country, and church bells will be rung to celebrate at various times over the weekend.

What an amazing 70 years it has been, with huge changes in our country and around the world, and in the monarchy itself as well. So much change, and many ups and downs, but the Queen has been steadfast through it all. Throughout the years of her reign she has fulfilled the vow she made when she was just 21 and the heir to the throne. " I declare before you all, that my whole life, whether it be long or short, shall be devoted to your service..."

How has she managed this so well? Good health, a supportive husband for over 70 years whom she described as "her strength and stay", and her own sense of service are three of the factors. In that vow as a 21 year old she went on to say that she needed the support of the people to help her to make good her vow, and the help of God. Her Christian faith is absolutely fundamental to her life and she has frequently spoken about it, in her Christmas broadcasts especially. The Bible, and the teaching and the loving sacrificial example of Jesus, are extremely important to her. She has no inflated idea of her own power, but recognises that God is supreme over all, and that she is accountable to him. At her coronation she was handed a copy of the Bible with the words "this is the Royal law" - a reminder that even those of the highest human status and influence are subject to God's rule, and his judgement.

On her Coronation Day the Queen asked the people to pray for God to give her wisdom and strength to carry out the promises she would be making. There will be many more prayers said for her over the celebration weekend, but prayers are also needed regularly for all who are in positions of power and influence in this country and around the world. And her example of faith and service is one we can all reflect on - what motivates us? What are the fundamental things in our lives? For me, my Christian faith is the foundation for my life. God's love is for all - and Jesus is the supreme example of that self-giving love in his sacrifice on the cross. His resurrection, which we celebrated at Easter, brings hope and the promise of transformation, and new and eternal life. Putting our trust in him and seeking to follow him as we live our lives, as the Queen herself has done throughout her long reign, helps us to live out that faith and share God's love with others.

Happy Jubilee weekend!

Elisabeth Spry.

THURSDAY CLUB

At our April meeting members had a presentation by Bunty about the Stately Home, Blickling Hall. Members found it all the more interesting because it was about the recorded lives of the servants and gardeners etc. relating in their own words their experiences in the 30s. Royalty, politicians and various aristocrats were among the many visitors mentioned.

Following this very entertaining and fascinating talk, we all enjoyed tea and hot cross buns followed by an Easter themed quiz.

Our Meetings are held on the second Thursday of each month. New members are always welcome

QUIZ NIGHT

St Mary's Church, Saturday 2nd July, 6:00pm for 6:30pm start.

Teams of up to a maximum of 6 people.

**Jacket Potatoes with various fillings served during the interval.
Bring your own glasses and drink of choice.**

£6.00/per person (includes food)

**To book ring Janet on 01508 530121 or email Marianne on
LSpilgrimteam@outlook.com**

**We would appreciate monies prior to the event please post through the
Parish Office door at 8 Flowerpot Lane by Wednesday 29th June.
(Cheques made payable to Stratton St Mary's PCC).**

2nd Long Stratton Brownies

In last month's May Issue, I hope you enjoyed reading about our Brownie Pack Holiday in Ipswich over the Easter school holidays. Perhaps some of you (mum's or grandma's) can remember in the past when you or your daughter stayed at Hallowtree Activity Centre as a Brownie. Brownie Pack Holiday gives girls the opportunity to develop their skills, have fun together and provides lots of lovely memories.



This term we celebrated the Queen's Birthday. We played Royal Bingo and decorated 70th Biscuits for the Platinum Jubilee. We also looked at the coins we use today, and older coins with George V and George VI and even one with Queen Victoria on it. The Brownies then received their official "The Queen's Platinum Jubilee 2022" Badge ready to add to their uniform for the Platinum Jubilee.

Another week the Brownies were able to use a soft archery kit outside which was a new activity for many and was thoroughly enjoyed. The Brownies did great and most of them managed to hit the target! During May some of the Brownies, joined by some of the Rainbows, enjoyed a visit to see the Attleborough Players production of "Jack and the Beanstalk." We all had a great afternoon with lots of laughter.

... Brown Owl

Delivering Sextons Wheel.

Do you have an hour to spare each month? We are looking for a volunteer to deliver 17 copies of the Sexton's Wheel at the end of each month in Wacton . The magazines will be delivered to your door each month ready for you to deliver. guidance will be given.

If you can help please call Ian on **07557990169** for more information.



At The Mayfields Care Home, we believe in a healthy, active lifestyle – one in which our residents can feel like winners. That's why we personalise each day to meet the individual activity needs of our residents and their families.

And hearing their laughter is music to our ears.

www.castlemeadowcare.co.uk

The Mayfields

SWAN LANE, LONG STRATTON, NORFOLK, NR15 2UJ
CALL 01508 535 500 TO ARRANGE YOUR VISIT



castlemeadow
CARE

RESIDENTIAL CARE | DEMENTIA CARE | RESPITE CARE | SHORT BREAKS



ANTHONY JAMES BRICE
CHARTERED CERTIFIED ACCOUNTANT

◆Tax ◆Accounts ◆Audit

**Small and Medium Sized Businesses, Self
Employed Individuals, Clubs and Charities**

*No-obligation free initial consultations, fixed competitive fees
and personal service*

T: 01379 309790 M: 07592 146144

E: anthony@ajbraceaccountancy.co.uk

W: www.ajbraceaccountancy.co.uk

10 The Thoroughfare, Harleston, Norfolk,
IP20 9AX.

Contact Care

Personal Lifeline
Alarms



A Contact Care lifeline provides
you with help and reassurance at
the touch of a button

Installed by us throughout East
Anglia

Just £3.70 a week &
an installation fee of £40



0800 917 4680

St. Mary's Church is at Risk!

St. Mary's church is over 700 years old and is a prominent historic feature of Long Stratton as well as the spiritual home of a Christian community. Many of you living in Long Stratton will have connections with the church. Some of you or your families may have been baptised or married there. Others will have loved ones buried in the churchyard. Children from our local schools often visit the church for lessons – you may even have done that yourself. You may just love old buildings. But the future of St. Mary's church is at risk and it has been placed on the Historic England "At Risk" register with the description "Priority: A - Immediate risk of further rapid deterioration or loss of fabric".

Age is taking its toll and the church is now in need of significant and expensive repairs. An architect's report has identified that repairs estimated at approximately £500,000 are required within 12 months. The roof on the north side needs completely stripping and re-laying, many of the windows need major repairs, the spire is split and some of the walls are damp and decaying. Thieves also stole lead from the roof of the extension last year which will cost several thousand pounds to replace. The church website includes more details and photos of the repairs required (<https://www.longstrattonandpilgrimteam.co.uk>).

St. Mary's is also very expensive to keep open. Each parish is allocated a sum of money it needs to pay to contribute towards the cost of clergy salaries, pensions and housing etc. This is about £2,100 per month, and the latest electricity bill was almost £1,500 (mostly heating costs). The congregation struggles to meet the running costs alone and there are no funds in reserve.

The Parochial Church Council (PCC) is working hard to obtain grants to fund the repairs. Often it takes many months to receive a decision from a grant application. Phase 1 aims to get the building watertight to prevent further damage and deterioration and to replace the extension roof. Following some successful grant applications, work will start soon to replace the stolen lead with a material less attractive to thieves.

Some grant providers require evidence of the amount of money raised locally before they will support us financially. Therefore, we need the help of the people of Long Stratton to restore the church to a good state of repair. Please will you give a donation, large or small, to help? If you are a taxpayer, you can Gift Aid your donation which enables St. Mary's to claim 25p for every £1 donated from HMRC at no extra cost to you. Donations can be made at: <https://www.stewardship.org.uk/partners/20038065>

We will update you periodically to show progress with achieving our funding targets and news about repairs.

Also, we are very conscious that the churchyard is not looking its best at present. The person that maintains the churchyard has sustained an injury and we are trying to find a way to get the churchyard maintained again as soon as possible.

Thank you

Chrissy Briggs and Steve Dugdale (Churchwardens)



- All makes and models
- Insurance approved
- Small dents to major repairs
- Tyres at competitive prices
- Vehicle sales
- Courtesy cars available

Where quality counts!

01508 535888

Unit 2 | Robert Harvey Way
Tharston | NORWICH | NR15 2FD
www.ymark.com | info@ymark.com



Family Run, Private Hire Taxi
Based in Long Stratton

Offering a friendly, reliable service
Short and Long Distances
Airports and Stations
Courier Service
6 and 8 seaters

It is highly recommended to
pre-book

Please call or message on
07464736667

Or visit www.kandjcars.co.uk

PAUL LOVETT

Repairs & Servicing

Home Appliances

07999 355267

E: lovett.repair@gmail.com



Covering South
Norfolk and North
Suffolk

20+ years experience

ARE YOU LOOKING FOR:

Dog Boarding

Dog Walking

Pet Sitting

If so contact Jane on :

07561106701

**Long Stratton, Norwich &
Surrounding areas**

Also offer house sitting and security while
people are away from home.

Police checked - Reference on request



Susan Whymark Funeral Service Ltd

Independent and Family Run

Serving Eye, Harleston and the surrounding areas Since 2004

We offer a range of services to suit your individual needs

- Funerals tailored to your needs and budget
- Full estimates given at time of arrangement
- Pre-arranged funeral plans arranged in accordance with FCA Regulations
- Direct Cremations
- Support Groups
- Memorials



We provide an efficient but friendly service through our professionally qualified staff

Chestnut House, 12 Progress Way,
Eye, Suffolk, IP23 7HU

Ley House, 11a London Road,
Harleston, Norfolk, IP20 9BH

Tel: 01379 871168 (24hr) Tel: 01379 851253 (24hr)

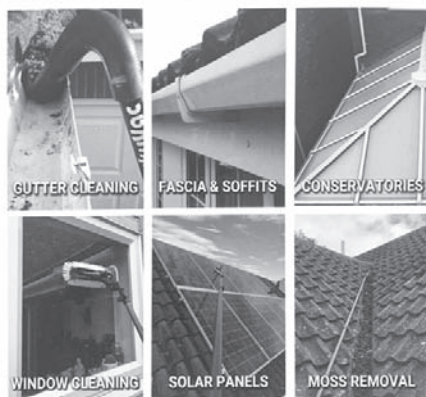
See our customer reviews at

www.susanwhymark.co.uk Email: susan@susanwhymark.co.uk



☎ 01508 471 994 ☎ 07796 503 096

www.tasvalleyexteriorcleaningservices.co.uk
info@tasvalleyexteriorcleaningservices.co.uk



☎ 01508 471 994 ☎ 07796 503 096

www.tasvalleyexteriorcleaningservices.co.uk
info@tasvalleyexteriorcleaningservices.co.uk



Janette: a key part of the Howards team.

Janette, is well known in the town having worked for Howards for 25 years. Throughout lockdown Janette has continued to support her local clients and seen first-hand the benefits of being able to work flexibly from home.

"Now is exactly the time to be responding to our customer's needs," explains Janette. "For me this means not being tied to an office, but being out in the area meeting my clients when it suits them.

"I've been selling houses in this area for a quarter of a century and now I'm selling houses for my clients' children as well. I'm not going anywhere, so my reputation depends on me delivering an outstanding service at all times and that's exactly what I'm going to do!"

But don't just take our word for it; listen to what her existing customers have to say:

G ★★★★★

I have found Janette and Hayley to be both very professional, polite and kept me informed every step of the way. I have only dealt with Janette in person and she couldn't be more helpful, ten out of ten in my opinion. Keep up the good work. M. L., August 2021

G ★★★★★

I've rarely had such a kind, professional, caring and timely service from an estate agent's. I have felt treated as a valued client, not a potential fee. The difference that makes is huge, as looking for and selling your home is very emotional and kindness goes a very long way. They're stars and I want to publicly thank them for everything. C. C., August 2021

Call Janette Churchill
Partner & Long Stratton Property Expert
T 01508 532 244 E janette.churchill@howards.co.uk

HOWARDS
Estate Agents since 1926
LONG STRATTON



Aspire Homecare offers home based support to enable people to continue living independently in their own home. Our services include:

- Shopping
- Local transportation
- Meal preparation
- Housework
- Gardening
- Professional carpet cleaning
- Accessing the internet
- Days out of your choice

Or just need a friendly face for a cup of tea and a chat

Please give **Nicky** a call today. We can create an individual support package that will suit your needs.

M: 07917 735 415

E-M: info@aspirehomecare.co.uk

www.aspirehomecare.co.uk



New to volunteering, or looking to gain more skills?

JOIN THE NORFOLK VOLUNTEER PASSPORT SCHEME

Volunteering is a great way to meet new people, build confidence and find a sense of purpose.

The volunteer passport provides you with free training to allow you to move between voluntary organisations, filling urgent, short-term roles.

For more information:

volunteercentre@voluntarynorfolk.org.uk

Tel: 07918286124.



**VOLUNTARY
NORFOLK**

Registered Charity
No. 11122017

FRENCH TUTOR



A Level

GCSE

Beginners

Currently achieving Top Grades!

One-to-One Tuition

Face to Face or Online

Group Study & Revision

French Club (Conversation)

Call 07808 209 534

Maths Tuition

**Looking for 1:1 teaching,
from upper primary to A-Level?**

www.greggbontly.wixsite.com/maths

I tutor mathematics to help students develop confidence, excel in exams, and achieve their goals.

Call **Gregg Bontly**, B.Sc (Hons), MBA

on **07905 916 685**

greggbontly@hotmail.com

MKL SERVICES HANDYMAN NORWICH

Trying to find a Handy Fixing Service in Norwich? Get in touch with MKL Services, The Reliable Handyman. We offer a selection of services including Plumbing, Tiling, DIY, Carpentry, Kitchen Fitting, Bathroom Installations, Blind/Curtain fitting and more.

EMAIL US AT: MKLSERVICES@ICLOUD.COM

CALL US ON: 07946774775



All services provided will adhere to social distancing rules and government guidelines regarding Coronavirus (COVID-19).



**BASED
LOCALLY
FOR YOUR
CONVENIENCE!**

- All makes and models of cars, vans and trucks serviced.
- MOT Preparation.
- Brakes, clutches, exhausts.
- Tyre supply and fitting service at competitive prices.
- Cam belts.
- Welding.
- 24hr Recovery.
- Courtesy car available.
- Friendly professional service.

Tel: 01508 489066
24hr Recovery: 0779 664 1881

Mark's Vehicle Services, Unit 1, Red House Farm,
High Road, Forncett St Mary, Norwich, NR16 1JR.

Open Monday-Friday 8 til 5:30. Saturday 8 til 1.

All major credit cards accepted 

ACE PLUMBING DAVID MILLWARD

Established 1980

NEW TO THE AREA

Reliable, honest, quality
workmanship.

Specialising in heating system
problem solving and all other
plumbing.

Walnut Tree Cottage - Silver Green
Hempnall - NR15 2NL

plumber1.dm@gmail.com

01508 498005/07763 359313

www.aceplumbingnorfolk.co.uk



Garden Landscape Services Ltd

(Wacton)

*The **complete** landscaping service!*

-
- Fencing ● Mowing ● Paving ● Clearances
 - Decking ● Turfing ● Hedge cutting ● Pathways
 - Grounds maintenance ● Tree work ● Planting *and more!*
-

Contact us for free quotations and advice...

(01508) 807567 • 07749 130872

enquiries@glsonline.co.uk

f @GardenLandscapeServicesLtd

www.GLSOnline.co.uk

PEMF - A different kind of therapy...

- Drug Free pain relief
- Better quality sleep
- Improves health and well-being
- Backed by extensive research



<--Find out
more about
PEMF

Contact Dean (Long Stratton)

07733 237869

info@thequantumalchemist.co.uk

www.thequantumalchemist.co.uk

METRO PLUMB
THE NATION'S LOCAL PLUMBER

**OIL
BOILER
SERVICE**

£95 +VAT

0800 415 514

4th
GENERATION

MICKY RYDER & SONS

LTD
ROOFING
SPECIALISTS
BUILDING CONTRACTORS

4th
GENERATION

Norwich 01603 458884 or 07850 597288
Norfolk 01508 532200 or 07825 908287

**Unit 16 Salamanca Road, Tharston Ind. Est,
Long Stratton, Norfolk, NR15 2PF**

www.mryderroofing.co.uk

mryderroofing@outlook.com



BUILDING
& ROOFING
SPECIALISTS
LTD

- **New Roofs**
- **Re-Roofing**
- **Roof Repairs**
- **Leadwork**
- **Flat Roofs**
- **Interior Renovations**
- **Exterior Building**
- **UPVC Windows**
- **Free Consultations**
- **Free Quotes**
- **10 Year Guarantee**
- **Established 75 Years**
- **4th Generation**
- **Quality Service**
- **Council Approved**
- **Constantly Recommended**

LONG STRATTON & DISTRICT WI

What a pleasure it was to welcome Lacey, a beautiful golden retriever, to our May meeting. She works as a therapy dog and visits hospitals, retirement homes, prisons, schools and other places where her calming presence will benefit people. The speakers from Pets as Therapy gave us a very interesting talk and presentation about their work and Lacey was very popular receiving lots of patting from our members.



The end of April is when women's institutes throughout the country go on a sponsored walk to raise funds for an organisation called Associated Countrywomen of the World. In the past supported projects have been about education of women or clean water, for example. This year money raised will be spent on sustainable agriculture, training and development to coincide with the United Nations' decade of family farming. Recent schemes have been in Malawi, southern India and Uganda. In Uganda the project is called "Goats for Empowerment." The aim is to help women in underdeveloped countries improve living conditions and provide for their families.

Here in Long Stratton our member, Bonnie, has sent us this report of the walk she organised and led for our members.

"You do not have to go far from Long Stratton to find a beautiful walk. A small group of us set off from Morningthorpe Church, crossing the churchyard with its host of daffodils now fading, and took a field path to Fritton Common, then down to the peaceful water meadows where we turned left following a grassy path. There were three stiles - but only one that you had to climb over, one you could walk round and the third stood alone, with no fence in sight! It was great to walk and talk in the open air, the pairings seamlessly changing as we strolled along, enjoying friendship with nothing but birdsong to distract us. After a mile or so we turned up a path between fields to reach the Fritton road and the dear little church of St. Catherine with its mediaeval wall painting of St. George with his rather aggrieved looking dragon. The path then twisted and turned beside hedges before crossing a field (which we nearly missed as the crop had begun to grow over it) and back to Morningthorpe where there was just time for a quick peek in St. John's before returning home refreshed."

Members who were unable to go on the walk donated at our April meeting and a cheque has been forwarded to ACWW via the Federation Office.

During the month some members met up for a knit and natter at Sue's and she also took the photos of the walk. Others enjoyed an excellent lunch at Netherton House in the village.

On 4th June we will be serving refreshments in the Pavilion at the town council's event for the Queen's Platinum Jubilee. Do come and have a chat.



Our next meeting at 7.30pm in Long Stratton Village Hall will be on Wednesday 15th June when we will hear about life and ministry on the waterways.

LONG STRATTON MEDICAL PARTNERSHIP

Swan Lane Surgery, Swan Lane, Tharston, Norwich, Norfolk, NR15 2UY
Tel: 01508 530781

Some good news from the practice. We have a new salaried GP, Dr Thomas Watchman joining us from the 12th of May. The team welcome him with warm and open arms and we know this will work out to be a wonderful working relationship. I asked Tom to write something about himself as a way of introduction to our community and he was very modest and I had to prod him to add some more. This is what he has to say:

Hi, I am Thomas Watchman, the new GP at Long Stratton. People generally call me Tom. Here is a bit about me. I grew up in London, then moved to Manchester to study medicine. I stayed in Manchester for more than a decade, where I continued working as a doctor after graduating. I went on to complete my specialist training to qualify as a GP. Over the past few years, the time has felt right to move closer to family, especially with a baby on the way. We searched all over the south and east, viewing houses as far away as Crawley, and finally decided on Norfolk and Norwich as the perfect place to settle and grow our family. I am very excited about starting as a GP in Long Stratton and meeting members of the community.

While looking for a practice to work at, Long Stratton became very appealing, as everyone seemed very friendly, and I got a real sense that the team were striving to provide the best care possible. My previous experience has been working in a large city, and I am looking forward to learning and helping in a new setting. I have a special interest in teaching and hope to contribute to training and mentoring the next generation of doctors to ensure the future of healthcare, particularly general practice, is bright and hopeful. Part of this interest involves writing study books and creating online content for medical students. Students seem to find these resources helpful, and they also help keep my medical knowledge up to date. I enjoy spending time with family, getting out in nature, exercising, and drinking coffee in my spare time.

Warm welcome Tom to our Team LSMP!

Stay Safe

Mini Nelson

- Door to door dial-a-ride service
- Weekly members outings throughout the year
- Group hires for not-for-profit organisations



Borderhoppa Outings for June 2022

Monday 6th – Great Yarmouth – Fare £15.00

Thursday 16th – Lunch at The Black Horse, Thorndon – Fare £7.00

Monday 20th – Southern Comfort Paddle Steamer, Horning – Fare & boat trip combined £25.00

Monday 27th – Cherry Lane & Goodies Farm Shop – Fare £7.00

Come and join us for....

The next Messy Church is on **Saturday 25th June, 9 - 10.45 am at St Mary's Church**. Starting with Breakfast at 9am, followed by a story, crafts, and activities for everyone, and finishing with a short time of worship.

For more information contact Megan on **07956 715383**



Just come along and join the fun!

Children must be accompanied by an adult.

HARLESTON & DISTRICT U3A

Harleston & District u3a invites you to join us on Wednesday 15 June at 2.00 pm in St John's Church, Harleston for a talk by Geoffrey Robinson on The Jubilee Feast Painting for George III, which adorns a wall in Worlingworth Church, Suffolk. Through this painting, and as we celebrate this our Platinum Jubilee year, we will learn about the Golden Jubilee of George III in 1809. For further information please phone **Kim Poulton on 01986 788149** or go to our website **u3asites.org.uk/harleston**



LET'S CHAT

Why not come along for a good old chat at St Mary's Church every Tuesday, 10.00am - 12.00pm.

Janet and the team will be there to welcome you all with tea, coffee and homemade cake. And as usual:

All are Welcome.

Long Stratton Town Council

**Pavilion, Manor Road Playing Fields, Manor Road,
Long Stratton, NR15 2XR**

**Chairman: Mr Kevin Worsley Clerk: Mrs B Buck
Tel: 01508 530524 clerk@longstrattoncouncil.info**

Long Stratton's Queens Platinum Jubilee Celebrations

You are invited to Long Stratton's Platinum Jubilee Celebrations on Saturday 4th June on the Manor Road playing fields from 11am until late. We are making it an event to remember to bring the whole community together. Long Stratton Football Club are kicking the event off with a youth tournament. There will be live singers, a magician and sporting demonstrations throughout the day and into the evening. There will be outdoor community games including Tug of War and good old egg and spoon races! A full list of games will be available via social media and our website and sign-up sheets will be at the councils tombola stand on the day. Also, there will be a bar, lots of stalls, plenty of fun for the whole family. There will be food and drink vendors, or you could bring your own picnic.

This event is being made as cost neutral as possible, so as you can appreciate there is a cost to the Town Council. There will be many free games to join in with but if you feel you are able there will be donation buckets around and any profit after the event will go towards our next event for the community. The day will be predominantly cash only but we will have a card machine at the bar. There will be a roundup of the day on our next newsletter.

Really looking forward to seeing you there!

Community room for hire

The community room at the Pavilion is available to hire, please get in touch if you would like to book, we are happy to show you around at the facilities on offer.

Vacancy

Have you wondered what the Council do? Do you have time to give back to the community? We currently have a vacancy for a Council member. If you would like to know more information, then please contact the Council Office on **01508 530524** or email **office@longstrattontowncouncil.gov.uk**

BARKER FAMILY FUNERAL SERVICES

We're all inclusive

*Family run with Family values
and Family at heart*

Provisions of all professional services, an obituary notice via social media, handling of all charitable donations, limousine, motorised hearse and bearers, 3ft coffin spray, includes all fees and choice of coffin.

Total
£3,875

The Simplistic Funeral

Total £1,590

The Street,
Long Stratton
NR15 2XJ

01508 536117

info@barkerfunerals.co.uk

www.barkerfunerals.co.uk



24 Hour Family Caring
Personal Service
Covering Norfolk & Suffolk



We will match any quote and
£50 cashback if you pay in full
before the date of the funeral



Specialists in the supply and install of new and replacement Pvc-u and Aluminium windows, doors, conservatories, secondary double glazing and roofline.
All available in a wide range of colours and styles.

Free surveys and estimates. Trade and DIY enquiries welcome.
For friendly advice and a competitive price.

E: info@moultonwindows.co.uk
W: www.moultonwindows.co.uk

01379 677730

Orchard Farm, Great Moulton, Norwich, NR15 2HA



Big enough to cope, small enough to care

mw
MOULTON
WINDOWS

CHRIS CLARKE OIL BOILER SERVICES

- Servicing
- Commissioning
- Breakdown Repairs

Servicing/Commissioning
07377 516660
Breakdowns
07912 146619



Registered

CARRY-ALL

Mel Rogers
Mob: 07850 402845
Tel: 01508 536182
e-m_carry_all@btinternet.com

Suppliers of:

- Mixed hard and soft wood
- Shingle [Natural]
- Sand
- Hoggin
- Ballast
- Crushed Concrete
- Ornamental Granite Chippings
- Top Soil
- Cultivated rolled turf
- Bark Chippings
- Compost & Peat
- Plumb Slate

No VAT - Free delivery

COMMUNITY UPDATE

LONG STRATTON NEIGHBOURHOOD TEAM

LONG STRATTON, HEMPSTALL & FORNCETT WARD



www.norfolk.police.uk

APRIL 2022



WE ARE YOUR SAFER NEIGHBOURHOOD TEAM – WANT TO GET IN TOUCH?

YOUR LOCAL BEAT MANAGER

CONTACT US – E: SNLONGSTRATTON@NORFOLK.PNN.POLICE.UK

TEL: 101

FOLLOW US ON SOCIAL MEDIA

FACEBOOK: South Norfolk Police

TWITTER: @SouthNorfPolice



PC 1279 Andrew Barkway

UPDATE FROM YOUR ENGAGEMENT OFFICER

NEIGHBOURHOOD WATCH WHAT ARE WE ALL ABOUT?

WHAT DO WE DO?

We support our members to create well-connected communities who support those who are vulnerable and isolated and thereby increase community health and wellbeing. All our schemes are run by local volunteers who want to make a difference. By joining up with your neighbours you can help to reduce crime and the fear of crime together.



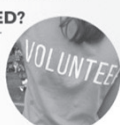
WHAT DO PEOPLE SAY ABOUT US?

COMMUNITY FOCUSED
NEIGHBOURLY
SUPPORTIVE
PROACTIVE

HOW CAN YOU GET INVOLVED?

You can join us as a member and join your local scheme or if there isn't one, why not consider starting a scheme of your own with your neighbours.

If you are interested in volunteering, we have a number of both local and national volunteering opportunities



Joining Neighbourhood Watch is simple. Scan QR code to get started.



To find out more about Neighbourhood Watch and how you can get involved visit our website:

WWW.OURWATCH.ORG.UK

WHAT'S HAPPENING IN YOUR AREA?

Over the past 3 months the team has continued to look at road safety, carrying out speeding checks, contravention of road sign enforcement, ASB visibility patrols along with engagement in the schools and presentations around internet safety and knife crime. With summer time coming up we are ready to meet everyone out and about having fun.

Thursday 31st March your Local Policing Neighbourhood Team held a virtual Priority Setting Meeting via Microsoft Teams, for Long Stratton and surrounding parishes.

Members of the community were given options to vote for their top policing priority – these votes were discussed at the meeting and the following Priorities have been agreed:

- Road Safety (including speeding)
- Anti-Social Behaviour
- Concerns around drug dealing & use

The Local Policing Neighbourhood Team would like to say 'thank you' to the community for your vote and voicing your local concerns. We will concentrate on these 3 priorities over the next 3 months.

If you have any information or concerns, please contact me.

Regards Andy

CURRENT NEIGHBOURHOOD PRIORITIES

- Road Safety (including speeding)
- Anti-Social Behaviour
- Concerns around drug dealing & use

DATES FOR YOUR DIARY

- Local Community Meeting - Wednesday 29th June
6.30pm via online Microsoft Teams

For local Engagement Surgeries see South Norfolk Police social media pages



CONTACT US THROUGH OUR
SOCIAL MEDIA CHANNELS



CALL US ON 101 OR 999 IN
AN EMERGENCY



TALK TO YOUR LOCAL
BEAT MANAGER



M SHEPHERD OPTOMETRIST LONG STRATTON

OPEN for Eye Exams, Contact Lens appointments and all your eyecare needs.

NOW OPEN 6 DAYS PER WEEK



OUR PROMISES TO YOU:

- WE LOOK AFTER LONG TERM EYE HEALTH
- WE OFFER REPEAT EXAMINATIONS WITH THE SAME OPTOMETRIST WHERE POSSIBLE
- WE USE ADVANCED TECHNOLOGY TO EXAMINE YOUR EYES
- WE PROVIDE OUR PATIENTS WITH THE TIME THEY NEED IN THE EXAMINATION CHAIR
- WE PROVIDE PROFESSIONAL PRESSURE FREE ADVICE

Mon-Fri 09.00-17.00

Sat 09.00-13.30

 01508 532 669

www.mshepherdoptometrist.com

Trusted Service at Your Convenience

Fully Licensed and Insured



www.BartramsServices.com 07402356519 Contact@bartramsservices.com

- | | | |
|----------------------|---------------------------|------------------------|
| • Garden Maintenance | • Tree Removal | • Hedge Cut + Disposal |
| • Gutter Cleaning | • Garden Redesign | • Grass Cut + Disposal |
| • Ivy Removal | • Patio and Decking Clean | • Lawn Treatment |

Activity Programme

April to September 2021

Free online activity programme for 0 to 5s in Norfolk



The Early Childhood & Family Service (ECFS) is still running, offering extra help to families who need it. Right now, due to Covid-19, we're providing a programme of online activities and groups that are available to families with children aged 0 to 5 years.



Early Childhood and Family Service



Live Online Groups

Baby Days Live Online

Six weeks of free online sessions for babies with their parents/carers. Each session will have a new learning activity to try out with your baby, plus an opportunity to meet other parents and talk to knowledgeable staff. Best suited to babies who are not yet walking.

Toddler Days Live Online

Six weeks of free online sessions for under 5s with their parents/carers. A chance to meet other parents, talk to knowledgeable staff and take part in fun, learning activities.

Baby Massage Live Online

A free five week course introducing massage strokes that can help with colic and support you and your baby to feel more relaxed, whilst strengthening your bond.

Register at

tinurl.com/ECFSevents

Sessions take place online via video call on Microsoft Teams. You only need an internet connection and a smartphone, tablet or computer to join.

If you would like to join but need help with technology, or you don't have a suitable device, please [contact us](#) on 0344 800 8020 to see how we can help.



Need extra help or someone to talk to?

We are here to help with things like:

- Becoming a first time parent
- Bonding with your child
- Parenting challenges
- Mental wellbeing
- Healthy relationships
- Learning through play
- Communication & language development



Please contact us and one of our team will be in touch.



Online form:

www.tinurl.com/ECFSHelp

Email:

ecfs-families@actionforchildren.org.uk



New videos or themed activity posts every day at [facebook.com/EarlyChildhoodFamilyService](https://www.facebook.com/EarlyChildhoodFamilyService)

Videos also on our [YouTube channel](#). First view on the day/time shown or catch up later



Musical Monday with Magic Acorns

A fun mini music session for you and your little one to join in with at home. Designed to help build little brains and bodies, while encouraging communication and confidence.



Monday

1.30pm

Let's Get Talking!

Ideas and activities to get your toddler talking, plus information on how the things you do with your baby, from birth, can help their future language and development.

Tuesday

11.00am

Children's Wellbeing

Tips to help you understand and nurture your child's emotional development, including how to deal with difficult situations.

Wednesday

1.30pm

Fun and Learning

A variety of indoor and outdoor activities for you to enjoy with your baby or toddler.



Thursday

11.00am

Cookalong

Step-by-step videos for easy family recipes which are fun to make together and will save you money compared to ready prepared food. No experience necessary!

Friday

1.30pm

Other activities for 0 to 5s and their families

Norfolk Libraries for Families

Weekly Online Bounce & Rhyme sessions, Story Week activities and Social groups via Zoom. Find out what's on from [Facebook](#) or www.norfolk.gov.uk/libraries



Norfolk Family Learning

Interactive 'Come and Try' taster sessions and online courses for families to enjoy together. For details and to book visit www.norfolk.gov.uk/familylearning



Norfolk Community Directory

Search for activities and services run by volunteers or other organisations in your local community. Visit communitydirectory.norfolk.gov.uk



0344 800 8020 | www.norfolk.gov.uk/earlychildhood | ecfs-families@actionforchildren.org.uk

Keep up to date with the free Action for Children Services App



Courses offered by the Early Childhood and Family Service



Our courses are running online via Microsoft Teams, or in small face-to-face groups at our risk assessed bases. Extra hygiene measures are in place and we will ask you to wear a face covering, unless you are exempt.

Solihull Parenting Course

A 10 week course to help you learn more about your child's development and behaviour. What is their behaviour telling you?

Baby Massage

A 5 week course for introducing massage strokes. This can help with colic and support you and your baby to feel more relaxed, whilst strengthening your bond.

Freedom Course

A 10 week course for women who would like to look at healthy relationships and to have a safe environment to be able to discuss and understand previous and current relationships.

Triple P

An 8 week course that offers support, information and practical answers to everyday parenting concerns.

Circle of Security

An 8 week course based on supporting and strengthening the attachment between you and your child.

Our partners



Home-Start Norfolk and the community offer in your local area are also part of the Early Childhood and Family Service, and are available to support you and your family.

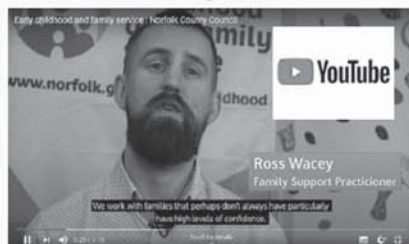
How to contact us

You can get more information on the service by visiting www.norfolk.gov.uk/earlychildhood

If you would like further information, help or support then please call us on 0344 800 8020 or email us at ECFS-Families@actionforchildren.org.uk



Any updates on services or groups can be found by visiting our Facebook pages. Search for Early Childhood and Family Service



See our video on YouTube to find out more


Useful contacts

Coronavirus Information	norfolk.gov.uk/coronavirus
Just One Norfolk (Health Visiting Team)	0300 300 0123
Leeway (Domestic Abuse Support)	0300 561 0077
Norfolk & Waveney Wellbeing Service (Mental health support)	0300 123 1503
Home Start Norfolk	01603 977040
Speech & Language Advice Line (ECCH)	01502 719830
Norfolk SEND Partnership	01603 704070
National Breastfeeding Helpline	0300 100 0212
Norfolk Police (non-emergency)	111
CGL (Alcohol & drug behaviour change service)	01603 514096
Citizens Advice Bureau	03444 111 444
Shelter (Help with housing & homelessness)	0808 800 4444
Job Centre	gov.uk/contact-jobcentre-plus
Mens Advice Line (for men in abusive relationships)	0808 801 0327

If you are worried a child is at risk please call Norfolk County Council Children's Services on


0344 800 8020 or 999 in an emergency

RECOMMENDED
GOOD
FUNERAL GUIDE



"Thank you Rosedale, your support and guidance made this difficult time a little more bearable."

— from a family we have cared for at Rosedale

 We are a family business and promise to provide exceptional care and a truly personal 24 hour service, when you need it most.

Victoria Rd, Diss **01379 640810**
www.rosedalefuneralhome.co.uk

JUMBO BAG DELIVERIES

SAND

TOPSOIL

MULCH



BALLAST

SLATE

PLAY BARK

STONE 6/10/20MM

MUSHROOM COMPOST

**CALL 01508 470674
FOR A PRICE TODAY**
Simons Landscaping Ltd

Electrician



Local, Friendly, Reliable
N.A.P.I.T. Registered that
works on all aspects
of Domestic and
Commercial Electrics
including storage heaters

Contact Ian or Caroline

@ ICD Electrics on

**0779 0273 689 or
0788 8740 473**

E-mail: icdelectrics@hotmail.co.uk
or www.icdelectrics.co.uk



Balliwick IT Ltd.

Having Computer Problems?

Windows and Apple Mac repairs, upgrades & troubleshooting

virus & malware removal, printer supply, data recovery ,

Microsoft 365 services, 4G Broadband solutions,

New & Factory refurbished machines, Security software,

Domain names, emails & hosting, Networking services.

Tel: 01953 718421 Mob: 07928 326008

Email: help@balliwickit.com Web: www.balliwickit.com



Happy Feet



Qualified Foot
Health Professional

Treatment of corns, calluses,
nail infections and much more.

To arrange a home visit please call
Wendy Latoy MCFHP, MAFHP on

01379 676872
or **079 2345 4646**

PHILIPPA GREEN WEB DESIGN

**Bespoke & Affordable Web Sites
Built For You**

**Mobile Device Friendly Screen
Width Responsive**

**Domains, Hosting, Email,
Shop, Self-Updating &
Standard Web Sites**

**Over 14 Years Experience
Promoting Small Businesses**

01508 532670

admin@philippagreenwebdesign.co.uk

www.philippagreenwebdesign.co.uk

NO VAT - Fully Insured & Qualified



Chris Rumbelow

Sandblasting & Welding

Matchbox Farm
Aslacton

Call 07787 821 457

Engine parts
Brake Discs
Brake Callipers
Wheel Rims
Rusty Parts

Chapel Doors LIMITED

**AUTOMATIC GARAGE DOOR AND
GATE SPECIALIST**

INSTALLERS OF ALL TYPE OF
GARAGE DOORS,

UP AND OVER, SECTIONAL, ROLLER AND
SIDE HUNG. AWNINGS.

SLIDING & SWING GATES, UNDERGROUND
OR OVERGROUND UNITS.

FAST SERVICE ON REPAIRS
25 YEARS EXPERIENCE

Tel: 01379 651959
www.chapeldoors.co.uk

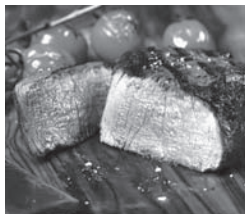
NETHERTON STEAKHOUSE

The Street, Long Stratton NR15 2XG www.nethertonsteakhouse.co.uk



**Great menu for all to
enjoy inside or
outside dining**

17th Century inside plus
heated pagoda and
garden outside



FULL FOOD MENU

Wed eve: 5pm-9pm

Thu, Fri & Sat:

12 noon-9pm

Sunday: 12 noon-5pm

including full roast option



See Facebook
or phone **01508 531500**

**TO BOOK EMAIL
enquiries@
nethertonhouse.co.uk**

WACTON FOOTCARE

The next session of Footcare will take place on Tuesday 12th July. If anyone is considering a 1st appointment for Footcare please call either of the numbers below for further information or to book an appointment.

The contact numbers are ---

Clare --- (Footcare Specialist) --- 07785 295358

Rita --- (for further information or to cancel an appointment) --- 01508 218407

WACTON COFFEE MORNINGS

The dates for our next Coffee Mornings are Tuesday 7th and Tuesday 21st June. We meet in the Village Hall on the first and the third Tuesday of every month from 10.30 through to 12 noon.

Caroline and Rita look forward to welcoming you for coffee, tea and cake as usual and of course lots of chats We are also pleased to invite anyone living locally from any of the local villages and can assure you of a warm welcome. So, if you are passing and see our "Kettles On" board displayed outside Wacton Village Hall do pop in we'd love to meet you.

Caroline and Rita

Catching up with the Cotman's

Although the Cotman's never lived in Wacton they give an insight into the absentee landlords who owned property in Wacton. One branch of this family ended up marrying into the Dawson and Turner families, bankers of Great Yarmouth.

In 1711 Elizabeth Bayspoole, wife of Edward Bayspoole, Gent of Ormesby, left the moiety and share in a property at Wacton to her kinswoman Elizabeth Cotman, wife of John Cotman merchant of Great Yarmouth. John Cotman, the only son of Joseph, died in 1717 aged 39 leaving three children.

Meanwhile John's father, Joseph Cotman, former mayor and solicitor of Great Yarmouth had amassed several properties in Great Yarmouth, Topcroft, Wacton and Hempnall. The majority of these he left to his eldest grandson Joseph, then still a minor, in his will of 1724

Joseph junior had entered Gonville and Caius College in 1721 and graduated with a LLB in 1726. In 1727 his first wife Mary died, he soon remarried to Amata. They had two children that died in infancy, Amata died in 1731 and Joseph remarried for a third time to Sarah Carter. They too had two children Sarah and John.

Joseph like his grandfather, served several terms as Mayor, and added to the family estate with properties in Pulham St Mary, Pulham Market, Long Stratton, Burgh St Peter and All Saints Elmham. Sarah died in 1751 and Joseph again married this time to Elizabeth Justice. By the time Joseph makes his will in 1762 he has acquired several houses in the Rows and leases a coach house built by him beside the town walls at Great Yarmouth and holds property left in the will of Richard Carter at St Margaret's Elmham in addition to his other properties. All this property is left to his son John, together with the moiety or share given to his mother Elizabeth in 1711.

John who started college in 1760 aged 17 takes six years before he gets his BA, probably because he is thrown into managing the family estates. He is ordained a deacon in 1766 and prior to his marriage in 1767 to Elizabeth Dove makes a marriage settlement whereby his properties in Pulham St Mary the Virgin, Starston, Needham, Wacton, Stratton St Mary, Stratton St Michael, Tharston, Moulton and Hempnall are held in trust to give the couple an income and then left to any children they have. Further land in Brome will be given to him and his wife on their marriage. The other property he retains as his personal property.

Rev John Cotman who lived at Brome got his MA in 1769 and is ordained a priest in 1770. Between 1768 and 1775 three children Elizabeth, Joseph and John are baptised at Brome. In 1776 he becomes Rector of Langham St Mary and Rector of Stanton in 1779, but does not live there. His wife Elizabeth dies in 1784.

He marries Georgiana Augusta Marcell in July 1785 and shortly after sells a house at Great Yarmouth, the Brome estate and lets Langham Parsonage and moves back to his father's house in Great Yarmouth. They have two children, one dies in infancy the other dies in 1815 on Gibraltar aged 28. Rev John put his father's house up for sale in 1791 and moves to Bury St Edmunds.

Between 1804 and 1819, John senior transfers the Pulham property to his son John junior and sells part of the Wacton farm (North End Farm). John senior dies in 1822 at Bury St Edmunds. In addition to the settled estate he leaves two houses in Bury and a farm at Newton Flotman to his son John. From the settled estate he leaves part of the Wacton farm (Hill House Farm) in trust for the children of his son Joseph.

From the documents I have seen I am unsure if the remainder of the Wacton farm (LeGrys farm) was sold just before John senior's death or remained in the settled estate.

John junior it appears is living in Lincoln's Inn in London then retires to Dover living on the incomes from his inherited estates.

Joseph is ordained in 1793 and becomes Rector of Sharnford Leicestershire in 1799, and takes on Sharnford Rectory which he complained needed £750 of repairs before he could move in. He marries a widow, Mrs Barrett, in 1802, then Jane Grey in 1817 with whom he has one son John Carter Davidson Dove Cotman born in 1821.

John C. D. D. Cotman starts working life as a frame smith then takes on a wine and spirits business in Hinckley. In 1846 he joins the Masons and in 1860 enlists in the Leicestershire Rifle Volunteers, the later lasts until 1862 when he marries Sarah Jane Hollier and takes on the post office in Hinckley. Like the rest of the family John buys property adding a farm in Burbage and property in Brewood Staffordshire to Hill House Farm Wacton he inherited. John and Sarah have no children so when Sarah dies in 1885 John gets help in the house and Post Office in the form a servant, Mary Edden, and a boarder, Anne Hughes.

When John dies in 1899 he leaves his three properties to Anne Hughes. Anne keeps the Hill House Farm until 1923 when she sells it to Owen Frank Snelling of the Wilderness Wacton.

Robert Maidstone



Just ask

If you don't know where to turn in an unfamiliar world, we are open, available and here for you. Whatever's on your mind, just ask.

MD WEALTH MANAGEMENT LIMITED

Associate Partner Practice of St. James's Place Wealth Management

01379 415511 | LONG STRATTON
michael.duale@sjpp.co.uk
www.md-wealthmanagement.co.uk



The Partner Practice is an Appointed Representative of and represents only St. James's Place Wealth Management plc (which is authorised and regulated by the Financial Conduct Authority) for the purpose of advising solely on the group's wealth management products and services, more details of which are set out on the group's website www.sjpp.co.uk/products. The 'St. James's Place Partnership' and the titles 'Partner' and 'Partner Practice' are marketing terms used to describe St. James's Place representatives.

SJP1202 V1 (04/20)

WACTON CHURCH COFFEE MORNINGS

Wacton Church holds a coffee morning every month (the second Saturday of each month) at 10.30 am,

The next coffee morning will be on Saturday 11th June 2022!!

All are welcome



WACTON ALL SAINTS CHURCH JUNE EVENTS

**SATURDAY COFFEE MORNING
ON 11th JUNE**

Come along and join us in the church for coffee, cakes and friendly chat from 10.30am onwards

ECO GARDEN PARTY

ON 25th JUNE

At Yew Tree House, Church Road, Wacton NR15 2UG

From 3pm.

Local craft stalls and refreshments.

Entrance £1

To book a stall (£5) Phone 01508 530111.

Proceeds to the restoration fund

Please note that for the week commencing June 13th the church will be closed to the public because of investigative work into the major problems with the fabric of the church walls and roof.

MAY WALK

Showery, Flowery, Bowery goes the old rhyme for April, May and June. Our May walk certainly lived up to its designation as seven of us set off through Norfolk Wildlife Trust's Ashwellthorpe Lower Wood: lady's smock, yellow archangel, violets, wood anemones and many more, not least the orchids and bluebells we had particularly come to see. There were swathes of them. A very special place. Liz led us along the winding paths to emerge at the far end of the wood onto a footpath that passed three ponds, across a little bridge, and beside a field before turning right down a gravelly lane. We peered through the hedge into a garden with elaborate sculptures including a beautifully carved lifelike wooden eagle. At the end of the lane, we turned right into a quiet road that led into Wreningham. The village sign explained its name with the legend of a local witch who turned herself into a wren to avoid capture. We were glad that the mediaeval practice of hunting the wren on St Stephen's day had long ceased! A disused telephone box had become a library but it was the unexpectedly beautiful floor that took our attention. It was a mosaic of a brown wren within a circular pattern of green and red tiles. Further into the village was the "fairy tree", a tree stump elaborately carved with little doors and windows, commemorating a tragic little daughter. Donations could be made for a cancer charity. At the end of the village we turned right again through the stables of Poplar Farm where there were not only some splendid horses but the first swallows we had seen this Spring. A grassy path ran beside a barley field and then, as we turned left for Ashwellthorpe church, we were treated to the breath-taking sight of four immense birds circling in the same thermal: two of them were definitely red kites with their forked tails and we thought the other two were buzzards. As they faded into the distance we continued down to the church and paid a visit. The church was quite plain inside but held two very fine marble effigies and, of course, a replica of the famous Ashwellthorpe triptych. The original is in the Castle Museum but you can also view it on-line. 10 minutes of road walking brought us back to the small car park. Thanks to Liz for a most rewarding walk.

Bonnie



LONG STRATTON LIBRARY

We continue to restore services at Long Stratton Library. We currently have:

1. Tables and chairs, so you can sit comfortably again
2. PCs and public wi-fi, including printing and copying services
3. Just a Cuppa on Mondays from 11am
4. Bounce & Rhyme on Tuesdays at 2pm
5. Lego Club (age 8+) on Tuesdays at 3.45pm
6. Stitches & Knitters on Thursdays at 4.45pm
7. Coming soon we have a Lego Club for ages 2-7 - ask staff in-branch for further details

You can keep in touch with us on Facebook by searching for '**Diss, Harleston and Long Stratton Libraries**'. You can also call us on **01508 530797** with any questions.

Our opening hours are as follows - please note that Open Libraries is unavailable for the time being.

1. Monday 11am-7pm
2. Tuesday 1-7pm
3. Wednesday CLOSED
4. Thursday 1-7pm
5. Friday CLOSED
6. Saturday 11am-4pm
7. Sunday CLOSED

Ryan Watts, Library Manager - Diss, Harleston & Long Stratton Libraries

Norfolk County Council
Library & Information
Service



Norfolk
County Council

CHURCH SERVICES - June

5th June - 11:00am - All Age Worship - St Mary's
09:30am - Holy Communion - Wacton

12th June - 11:00am - Holy Communion - St Mary's
09:00am - Holy Communion - St Michael's

19th June - 11:00am - Morning Worship - St Mary's
09:30am - Morning Prayer - Wacton

26th June - 09:00am - Holy Communion - St Michael's
11:00am - All Age Holy Communion - St Mary's

Congregational Church Services

Sunday 5th June at 10:45am – Family Service incl. Infant Christening & Holy Communion
Pastor Malcolm Simpkin

Sunday 12th June at 10:45am – Family Service - Pastor Malcolm Simpkin

Sunday 19th June at 9:45am - Community Family Breakfast
- 10:45am – Family Service - Mr. Pat Mottram

Sunday 26th June at 9:45am – Monthly Prayer Meeting

Sunday 26th June at 10:45am – Family Service - Rev Ian Jones

From the Parish Registers

Funerals

We offer our deepest sympathy to relatives and friends of:

Maureen Machie. Funeral is 27th May 1100 at St Michael's

Weddings

We offer our congratulations to Daniel and Katherine.

4th July - St Mary's - Marriage between Daniel Channell and Katherine Palmer.

THE SEXTON'S WHEEL

If you have something to tell us, an event coming up, an article of interest please contact us **email: thesextonswheel@googlemail.com**

tel: 07557 990169

or send to the **Parish Office** 8 Flowerpot Lane, Long Stratton, Norwich NR15 2TS using the form below.

If you would like to advertise any Community Events this is free and we can tell over 2200 households

Editorial: If possible all editorial to be sent by e-mail. This saves time putting the magazine together and more importantly this would ensure names of people etc are spelt correctly. **Deadline for editorial is the 11th of the month**

Images: Any pictures you may have to accompany editorial would be welcome. Please send these as jpgs not embedded in a word document.

Adverts: Advertising rates per issue: -

Quarter page(6cm x 9cm)	£19.20	Half page (13cm x 9cm)	£33.60
Full page (13cm x 18cm)	£60		

Market Place: Advertise items for sale or wanted for £5 per item per issue. maximum 30 words. This is not for commercial items but private adverts only. There is a maximum selling price of £500 for goods and the editorial team reserve the right to refuse any advert they feel unsuitable. The Sexton's Wheel will not be held responsible or enter into correspondence for any transactions between the buyer and seller. No logos or pictures

Deadline for adverts is the 5th of the month

Fixed charge of £10 for designing and re sizing any advert supplied - we will inform you when the advert is submitted if there is to be a cost incurred. No charge for change of wording if supplied as word document.

ADVERTS and DISTRIBUTION OF MAGAZINES - Ian Hetherington
07557 990169 thesextonswheel@googlemail.com

EVENT _____

DATE _____

TIME _____

PLACE _____

BRIEF DETAILS _____

CONTACT _____

**Whittley
Parish**

serving your community since 1994



**VALUING PEOPLE AS
WELL AS PROPERTIES**

It's our team that
make the difference

Our service unpacked

"I've used Whittley Parish Estate Agents for letting, buying and selling property and they have always provided an outstanding service – very professional and super friendly. If only all Estate Agent were like this." Mr J C

Google
Reviews ★★★★★

"We are thoroughly impressed with the team at Whittley Parish, Long Stratton. Their professionalism, courteous and friendly attitude has made the sale of our house and the purchase of our new home a pleasant part of our experience. We are sure we would not have received this genuine service from any other Estate Agent." Mrs P McG

"Rachel and her team were excellent, made our house sale so easy and quick. Thank you Rachel and girls for making this transition so easy and painless a process." Ms J J

"Although we didn't end up buying a property through Whittley Parish, we wished we had! They are the most approachable team. Hands down the best Estate Agency that we have dealt with during our property search."

Ms N W

Your local independent Estate Agent since 1994

T 01508 531331

E long_stratton@whitleyparish.com

W www.whitleyparish.com

Beatrix Potter Cottage, The Street, Long Stratton NR15 2XJ

