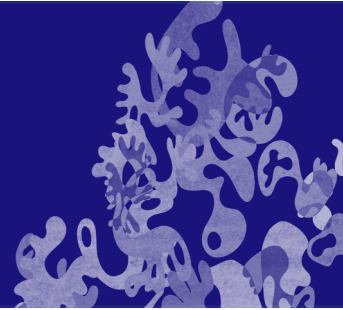


Engage project

Helping women in Harlow to build a personal pathway to employment, training and volunteering



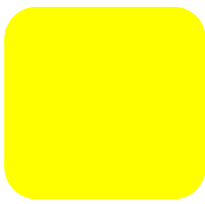
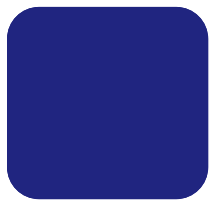
"It's been a steep learning curve but I have learnt a lot!"



The Engage project is funded by the European Social Fund

**Volunteering...Employment...Training...Apprenticeships...
Self Development...Health and Wellbeing...**

Contact Kate on 07598 530305
or email: kate@rainbowservices.org.uk

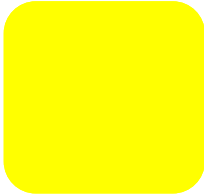
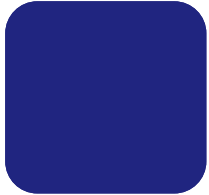


What we offer



The Engage project is aimed at women who are unemployed or economically inactive and would like to move in to employment, education or training. To participate you must have the right to live and work in the UK.

This project will help you build a personal pathway to help you get to where you want to be.



Get Involved!

To find out more and to express your interest in getting involved please contact Kate on 07598 530 305 or kate@rainbowservices.org.uk or make a referral via Harlow Frontline www.harlowfrontline.org.uk

"I feel so comfortable and connected within this community"

Registered Office: Rainbow Services, 2 Wych Elm,

Harlow, Essex CM20 1QP

Charity Registration No. 1077228

Company Limited by Guarantee No. 3826440

www.rainbowservices.org.uk


Rainbow
services