



P.E.

Daily challenge

Complete the Joe Wicks daily fitness videos.

Day 1

<https://www.youtube.com/watch?v=d3LPrhI0v-w>



Poetry

Read the Sloth poem found below and answer the questions.

Challenge- Have a go at writing your own, this might be about another rainforest animal.



Science

Compare the rainfall in the Amazon Rainforest to where you live.

We have been learning about sound in science, can you record a video using household objects or design an instrument to create sounds inspired by the rainforest.

Rainforest

BRAIN BUILDING PROJECT



Art

Take inspiration from Kandinsky- Looking at patterns and shapes found in nature to design a final piece.



Writing

Write a story about visiting a Rainforest and all the amazing animals you see.

**Deep in the rainforest where nobody goes,
there lives a sloth with three pointy toes.
He is very slow moving so climbing take a while,
going any quicker just isn't his style.
His lazy smile you have come to expect,
but maybe not what happened next...
Although he is one of the tree's slowest movers,
put him in water and his moves are much smoother!**

**An agile swimmer he turns out to be,
but the tops of the trees is what he would rather
see.
He visits the forest floor once a week for a poo,
but down there walking is tricky for him to do.
In the trees his large curved claws are a useful tool,
but what does this creature need for his fuel?**



**He eats leaves, shoots and fruit as his favourite
meal, and juicy plants give him water as part of
the deal.**

**The algae coat that grows all over his
tummy,
makes him look green and a little bit funny.
He is awake in the daytime ready to play,
unlike his two toed sloth friends who have called
it a day.**

**For thirty years he might shuffle in the trees,
with his short tail and upside down fur he can
stay cool with ease.**

**Sleeping has always been a favourite
task,
fifteen to twenty hours a day isn't much to ask?
He can turn his head two hundred and
seventy degrees,
that must affect how much he sees!
Now say goodbye to our slow moving
friend,
let's hope his tree top adventures never have
to end.**

Set A

1. What was your favourite part?
2. What was the message it was trying to give you?
3. Which words did you learn that you didn't know before?
4. Would you like to meet a sloth?
5. Can you see any rhyming words?
6. What does agile swimmer mean?
7. Do you think being a sloth would be easy or difficult?



Set B

1. Is this free verse poetry? Give an example to evidence your answer.
2. How do you feel about this animal after reading this poem? Are they portrayed positively or negatively? Give an example from the poem.
3. If you met a sloth in a Rainforest what would you like to ask him? How do you think he would answer?
4. Which phrase did you find that told you something about a sloth you didn't know?

Set C

1. What is the message the poet is trying to give you about the sloth? Should you like them? Why/why not?
2. Would you recommend this poem to a friend? Why/why not?
3. Can you find examples of noun phrases used to give us more information about the sloth?
4. How does the poet subtly allude to deforestation?

Topic Work

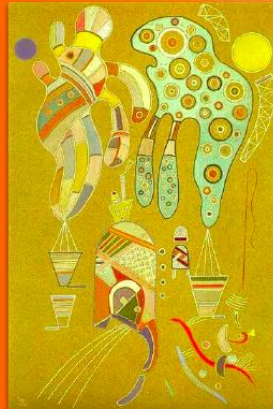
Art- We have been looking at Kandinsky- linking art, shape and sound.

WALT create a final design inspired by the artist Kandinsky and shapes in the rainforest.

Kandinsky's ideas about colour and shape:

Yellow is associated with warmth, the land and the earth.

Yellow surfaces appear to move towards us.



Untitled, 1941.

Orange is warm, and associated with movement.

What can you see?
Do you associate these colours with the same ideas, or different ones?

Kandinsky's ideas about colour and shape:

Blue is a celestial colour (associated with the sky, outer space and heaven).

Red and purple are warm, lively, agitated and forceful.



Dark Freshness, 1927.



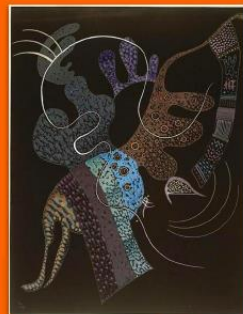
Twilight, 1943.

What can you see?
Do you associate these colours with the same ideas, or different ones?

Kandinsky's ideas about colour and shape:

White shows clarity. It is deep, silent and full of possibility.

Black shows nothingness. It has no possibility. It is silent, without hope and associated with death.



White Line, 1936.

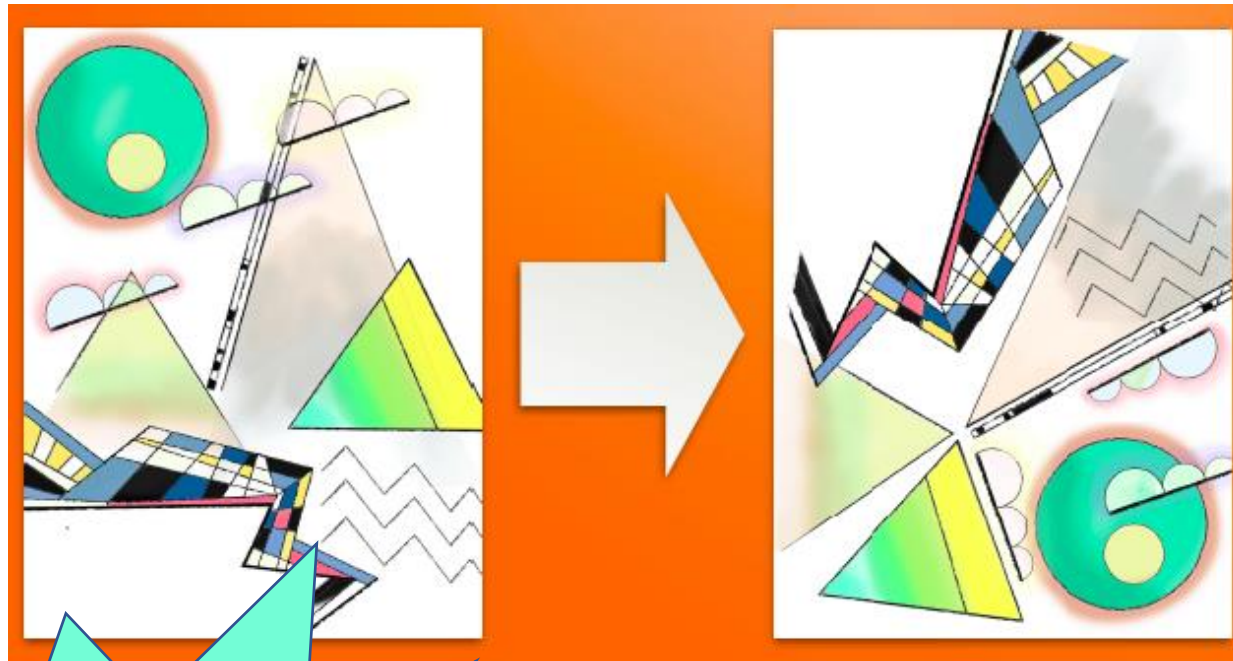


Dominant Curve, 1936.

What can you see?
Do you associate these colours with the same ideas, or different ones?

Topic Work

Today, you'll make your own Kandinsky-inspired, abstract works of art based on your previous sketches and ideas.



You can use any media you would like to present your ideas. You may want to use paint, collage or computer programmes to help develop your final piece.

