

Holy Trinity⁺⁺⁺

SE 20

Holy Trinity is a family where **everyone** is welcome, accepted and encouraged to use their gifts within the body of Christ. We try to put Christ at the centre of everything we do. We care about the world around us and are passionate about social justice.

Our vision is to be:

‘A heart for the community: worshipping and serving God’

Our mission aims

- To continue to grow as a vibrant community of faith
- To share the love of Christ in the wider community
- To provide a heart for the community inspired by God's love

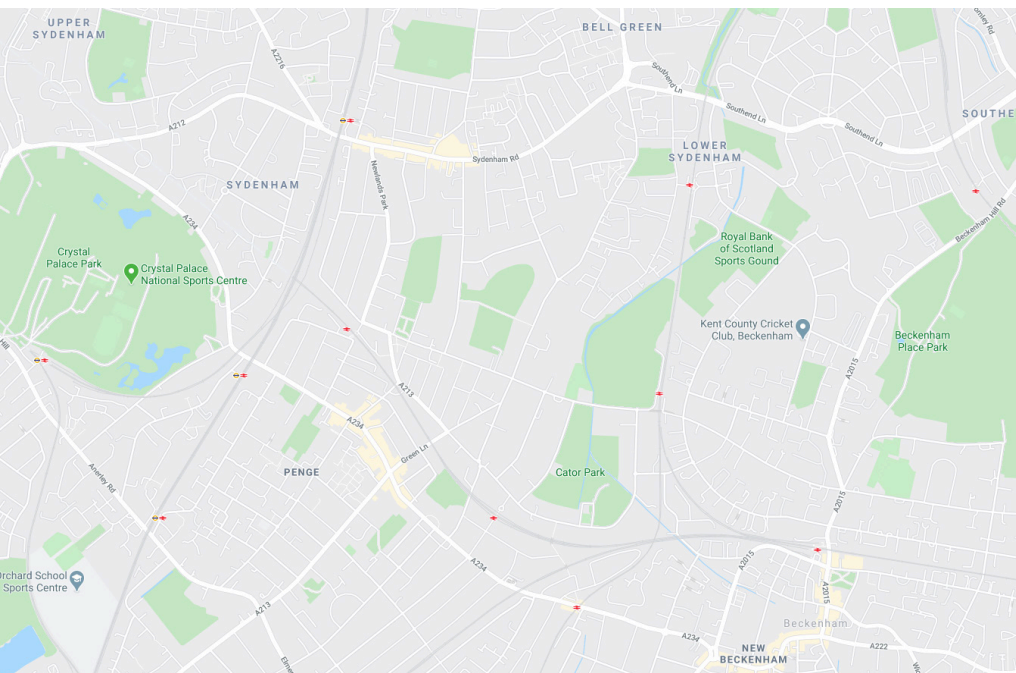
Our objectives

- To celebrate and proclaim the good news of the kingdom of God as shown by Jesus
- To teach and nurture both new Christians and all our church members
- To respond to human need by loving service in the community
- To be aware of and to try to transform the unjust structures of society
- To strive to safeguard the integrity of God's creation and to sustain and renew the life of the earth



Parish background

Holy Trinity parish is in south-east London and sits between Penge, Sydenham and Beckenham. The parish contains approximately 2,200 households with a population of around 5000.



There is a real diversity in the parish in terms of income levels and ethnic backgrounds, which reflects the varied housing. There are many large detached and semi-detached houses, terraced houses and cottages built during the Victorian era. In addition, there are a number of modern blocks of flats – the majority being managed by housing associations – and a significant number of the large Victorian houses have been divided into flats and bedsits, as well as being used as day nurseries and sheltered housing for the elderly. There are four care homes and sheltered houses for those with mental health issues.

There are excellent rail links to the City and West End of London as well as many local bus routes. This has contributed to a radically changing demographic within the parish, as more young professionals and young families move into the parish.

The parish mixes dense housing with green spaces and recreation grounds. There are a number of clusters of local shops, and both Penge and Sydenham high streets are within easy walking distance from the church. Bromley town centre is only a 15-minute car journey away and has a large shopping complex.

The parish also includes a small commercial site, three local authority schools and three other places of Christian worship.

Many parishioners commute daily to London and there are a large number of young couples with both partners going to work. There are quite a number of families with young children in the area.

A significant percentage of the population are on low incomes, pensions or are unemployed.

Our congregation reflects some of the diversity in the parish, but could be more representative of the changing demographics. Approximately 60% of our congregation comes from outside the parish.



Where are we now?

Over the last five years we have been working through a five year plan to build Holy Trinity as a heart for the community in Penge where everyone, whoever they are, can come and experience God's love.



Holy Trinity is a place where people can meet, learn and grow through their encounters with God and with each other. Hundreds of people come through our doors each week, and there are lots of opportunities for people to connect with each other and the church.

We aim to provide something for everyone - with a range of activities taking place throughout the week to appeal to individuals of all ages and backgrounds. This may be in the form of practical, physical or spiritual support - or simply in offering the chance to have a bit of fun.

We passionately believe that everyone is important and valued in God's church - whether they are young or old, whatever their background, line of work or personal situation. We have developed our work to reflect this - offering groups and activities to appeal to children and families, older people, busy professionals, and vulnerable individuals.



We support people in the parish at important times in their lives, with baptisms, weddings and funerals. And for those who do not come to church, we go to them with prayer visiting, services outside the church, prayer on Penge High Street and through our participation in the annual Carols in the Park.

Living Well, a registered charity, which supports some of the most vulnerable in our community, has grown out of Holy Trinity. It provides a regular hot meal, a foodbank, support with addiction and mental health as well as a range of other services provided by professionals and volunteers. Since it started, we have supported thousands of people through our foodbank and many more have benefited from the friendship and practical help they have found at Living Well.

Where are we headed?

As we reach the end of our current five year plan - and look forwards to our future alongside St John's, Penge - we believe it is a truly exciting time, as we seek to do God's will in our community. The new incumbent will play a key role in helping us to shape this future.

- Continuing to grow as a vibrant community of faith
- Looking outwards to share the love of Christ with our local community
- Putting prayer at the centre of everything we do.
- Making sure Holy Trinity is a friendly community - where everyone feels welcome
- Develop our existing ministries amongst vulnerable people within our local community - building on the successes of Living Well and similar projects at St John's
- Building on our work with children and families
- Supporting and training church members - so they in turn can help others to grow in the love of Christ

We have recently received pledges of a significant amount of funding towards a Families and Youth Worker to help guide and support our work with children and young people. This will be a central part of our work in the coming years as we seek to realise the opportunities that are presented as we join together with St John's.

Sunday Worship

We seek to apply the principle that worship is an act that is carried out through the week – with Sunday worship helping to complement and inform this.



Currently we run two main Sunday services – 8am (said communion) and 10.30am (where we have a mixture of music and service styles, with communion most Sundays). We also run regular prayer, healing and “Prayer and Praise” services on Sunday afternoons and evenings, as well as a mid-week Holy Communion.

We run children’s activities for five different age groups – ranging from creche to older youth. These use a variety of teaching materials and resources – mainly sourced from Scripture Union and Urban Saints. Once a month we run a separate “Pizza and Games” event after the 10.30am service.

At major festivals we follow the lectionary, but at other times of the year we aim to provide sound biblical teaching which can be applied to everyday life – either following a particular theme or systematically working through a book of the Bible.

Monthly Community celebrations bring together the whole church family for an act of all-age worship.

Typical Sunday attendance is around 90, including 20 children and young people.



We try to encourage all members of the church family to play an active role in our Sunday worship – whether through leading prayers, doing the Bible reading, leading services, playing music, preaching, leading children’s groups or welcoming. And we make a conscious effort to ensure that the leadership of our services reflects the diversity of our church community.

Our congregation brings a wide range of skills, expertise and talents, which they contribute to our Sunday worship. These include Licensed Lay Ministers and Readers, worship leaders, theologians, children’s and youth leaders, warm welcomers, passionate

prayers and those with technical expertise – all of whom help to create our Sunday worship experience.

In addition our church building offers a flexible space, which is well-equipped with a good quality sound system and video screens that are used to enhance our worship experience. Since COVID-19 lockdown we have been streaming and sharing our service content online.

Discipleship and pastoral care

Pastoral care at Holy Trinity is overseen by the Staff Team, with members from across the church supporting each other in a variety of ways:

- Community groups run throughout the week, and provide a space where church members can study, pray, worship and share their faith. The study material follows the Sunday sermon themes.
- Courses are run to allow people to explore specific aspects of their faith
- Two diocesan courses – ‘Hearing God’s Word’ & ‘Speaking God’s Word’ – are used to train and equip our group leaders and train new preachers
- Members of the church are encouraged to get involved in all aspects of the church’s ministry – helping to explore their gifts and grow in faith
- As well as providing a platform for evangelism, Alpha courses are used to help encourage growth and sharing of faith
- We offer training and pastoral guidance to support members of the community who come to the church for weddings, baptisms and funerals

The Network Team (composed of group leaders, representing the different aspects of the church’s ministry) meets regularly to ensure that as far as possible no one is being overlooked.

Getting involved

At Holy Trinity, we have made a conscious effort to involve a broad range of people from across the congregation in every aspect of the church.

Members of the church volunteer in a wide range of activities (as part of Sunday worship and throughout the week), and we seek to be a nurturing community that encourages members in their gifts. This active discipleship is something we regard as important in helping members grow in faith.

The **staff team** works closely with the vicar and is responsible for overseeing church worship, teaching

and pastoral care at Holy Trinity. It includes the vicar, two licensed lay ministers, the church administrator, and representatives of children’s and youth work.

The **network team** is made up of leaders from across the range of church activities. It gives a chance for the different groups to share ideas and communicate about current activities and requirements.

In recent times we have seen Holy Trinity act as a springboard to ordained ministry for a number of our members.



Having fun together

The Church in the community

Schools work

Holy Trinity has strong links with the three schools in our parish (an infant, junior and secondary).

Working in partnership with TLG (Transforming Lives for Good), we are able to support struggling students at Alexandra Junior School through early intervention coaching. Members of our congregation also provide support with reading.

Our work together with the local schools also includes activities like assemblies, concerts, fairs and carol services.



Over 50s

Open door and **Meeting Point** are key parts of our outreach to those aged 50 and over. Weekly meetings provide opportunities for attendees to build relationships and support one another over cake and a cup of tea. In addition, we offer craft activities, games and entertainment, as well as opportunities for people to explore faith and worship together.

The aim is to meet people's needs; providing a break from the feeling of isolation, alongside physical and intellectual activities, whilst seeking to meet spiritual needs and offering opportunities for prayer.

The success of these groups, which have around 40 regular attendees, have led to the introduction of similarly popular holiday clubs for the over 50s, high teas and special lunches.



Our "messy" church

Through our links with local schools and families, we're able to put on hugely popular pancake and light zone parties. This is an area of ministry that we are keen to grow – providing ongoing links and pathways into church for these children and families.

Pre-school

Holy Trinity pre-school has been running since 1968 – providing childcare five days a week for up to 25 children from the local community. There are currently four members of staff, and church members play an active role in the leadership – as members of the trustee board.

Throughout the year we run a number of services, fairs and activities, which aim to bring together the pre-school and wider church family.



Ignite Youth Group

Teenagers connected with Holy Trinity meet at Ignite, our youth group, every Friday evening (during COVID lockdown, this has continued online). They participate in a range of activities and faith-based sessions. We also offer Sunday morning Bible studies and a monthly "Pizza and Games" event.

Through these activities we aim to see young people coming to faith, develop them as leaders and integrate into the wider church.

Bromley Mindcare

The church has a longstanding relationship with Bromley Mindcare – supporting their work with people living with dementia. Throughout the year, we visit their centre in Beckenham and lead acts of worship.

Sutherland Court

A small group from Holy Trinity runs monthly acts of worship at this local care home. Each team member takes turns speaking, leading the services, leading prayers, Bible readings and providing music.

Scouts

Four scout groups currently use the church facilities. The current vicar is an honorary scout leader and visits them on their annual camps.

In recent years social action and outreach have become increasingly central to the ministry of Holy Trinity. Amongst our church family there is a real passion for seeing our faith in action – in our local community and further afield. This is reflected in the range of organisations that we actively support – financially and practically.

Living Well

Inspired by Isaiah 61 (and specifically Jesus' reading of it in the synagogue), Living Well Bromley is a registered charity, which has grown out of the ministry of Holy Trinity and continues to be an integral part of our life and ministry.

The Spirit of the Sovereign Lord is on me, because the Lord has anointed me to proclaim good news to the poor. He has sent me to bind up the brokenhearted, to proclaim freedom for the captives and release from darkness for the prisoners...

The team of over 80 volunteers (from Holy Trinity, other local churches and elsewhere) provide services and resources to support vulnerable people with a variety of needs: such as addictions, mental health issues, debt problems, homelessness and social isolation. They aim to meet the needs of the whole person (physical, emotional and spiritual) in an integrated way; sharing God's love and enabling people to fulfil their potential in the community.

Living Well has become a missional hub for the local area – seeing church members getting involved in mission work, and as a result growing in faith and commitment. It has been really encouraging to see the way the local community has caught the Living Well vision – offering practical and financial support, and ultimately becoming a part of the Holy Trinity family.

The work of Living Well is highly respected across the Borough of Bromley and further afield. Throughout the COVID-19 crisis the church has remained open as Living Well provides a critical frontline service including foodbank provision, take-away hot meals, food deliveries to vulnerable people, a listening ear and counselling, as well as an advocacy service which provides support with benefits and housing.



“Living Well provides vital support to some of the most vulnerable people in society – from people who are homeless or have mental health or addiction problems, to those that have to make the awful choice between eating and heating or have had their benefits sanctioned. The service that Living Well provides, and the commitment of the volunteers, is really inspiring. I want to see a society where no one has to turn to food banks for help, but until then Living Well is a charity that I am proud to support.”

Ellie Reeves, MP, Lewisham West and Penge

Living Well partners

- Other local churches
- Police
- Bromley Drug and Alcohol Service
- Mental health teams
- NHS health check
- Bromley Council
- Citizens Advice Bureau
- Christians Against Poverty
- Social workers
- Thames Reach/ Street Link
- Probation officers
- Local schools
- Local stores and businesses

Living Well awards

- Safer Bromley partnership
- Love Britain and Ireland award

Evangelistic Outreach

Our church family is passionate about seeing people in our local area turning to Christ.

Alpha courses are run regularly and have been well attended. Through them we have seen a number of individuals coming to faith, returning to faith and becoming members of the church.

We have also regularly worked closely with other local churches on a variety of evangelistic activities including Summer Holiday Clubs in Crystal Palace Park, Soul in the City, YWAM Megacities, The Turning and regular "Healing on the Street".

Throughout the year, the church building is used for numerous community events, with a footfall of several thousand people – giving a tremendous opportunity to share Christ's love more widely.

The church has really benefited from a number of YWAM teams joining us from Brazil and the USA for periods of up to six weeks. In particular, they have been involved in street evangelism, prayer walking and outreach to young people.



St Christopher's

Holy Trinity has been supporting St Christopher's hospice both practically and financially for a number of years.

Children's Society

Financial and prayer support.

Christian Aid

Holy Trinity has actively promoted the work of Christian Aid for a number of years.

Esuubi

Founded by members of the Holy Trinity congregation, Esuubi aims to provide some of Uganda's neediest children with the love of a mother, the support of a family and the hope of a future.

Over the last twelve years, we have been supporting Esuubi in a number of ways:

- Financially – as a church and individual members of the congregation
- Helping to raise awareness of Esuubi's work
- Through prayer
- A number of members of the congregation have visited Uganda and provided practical support



CAP

Working closely with Christians Against Poverty in the local area.

Release

Financial, prayer and awareness support

Penge Churches Housing Association

PCHA is a community-based housing association that is passionate about enhancing the lives of residents. Members of the Holy Trinity family provide practical support in a number of ways.

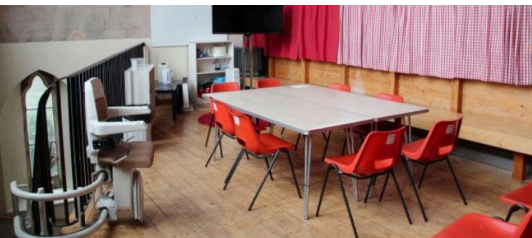
The church building



Since its original consecration in 1877-78 the Holy Trinity building has changed dramatically, leading to the creation of a versatile, well-equipped centre for worship and community activities.

The building was gutted by arson in 1993, giving the opportunity to create the current interior, which beautifully blends the historic exterior with a more contemporary interior. The building is divided into zones, which are used independently throughout the week – accommodating a wide variety of activities.

The light-airy worship area is fully equipped with screens, sound system, recording and streaming facilities. It is separated from the hall by sliding doors, which can be fully opened to increase capacity when required.



The vestry, office and balcony area provides smaller spaces that are used for meetings, the youth group, advocacy and support sessions.

The church lounge provides a comfortable space for homegroups, our over 50s groups, and community and children's activities.



The pre-school area is also used for children's groups on Sundays, as well as for workshops and meetings during the week.

The grounds are well maintained with a community Garden which was created and is looked after by the Living Well Team. There is also a sacred prayer garden, which is available for private prayer and reflection.



The Vicarage

The five bedroom vicarage is set back from the road, adjacent to the church. It was purpose built around 1960 and stands in its own grounds.

It is a lovely family home, and an ideal environment for children of all ages. Mowing the lawn is good exercise – if that's your cup of tea!

Whilst Holy Trinity cannot claim to be incredibly well-resourced financially, we have sought to maintain a balanced budget which focuses our financial resources on ensuring we “pay our way”, whilst using any excess to enhance our ministry.

Our main source of income is giving from the church congregation, however, we also generate significant income from church centre lettings, fundraising events – such as fairs and auctions, and the licence fee from a mobile phone mast in the church tower.

Our major outgoing is the Parish Pledged Offer, but we also seek to make significant contributions to our chosen charity partners. Other notable areas of expense include church maintenance and repairs, utilities, and the employment of a part-time administrator and a part-time cleaner.

Following our most recent quinquennial inspection a few small items needed to be addressed, however, as a result of works over the last 15 years the building is generally in a good state of repair.

As with many churches, the recent COVID-19 crisis has had an adverse impact on our finances. At the time of writing the exact impact is unknown, but we are working hard to minimise the effect on our ministry, and are confident we will be able to cover the shortfall without breaching our reserves policies.

It is expected that the proposed merge with St John's will free some funds which can be reallocated into our ministry.

