



Worle Wide Express

April 2017
Price 25p



THE PARISH OF WORLE

www.worlewide.org.uk

St. Martin's, Church Road **St. Lawrence**, Wick St. Lawrence **St. Mark's**, Queensway
Mead Vale Community Hall, Redwing Drive.
Worle Parish Office, St. Mark's Church Centre, St. Mark's Road,
Worle BS22 7PW.....515922

Mission Statement:

a community centred on the living Jesus, growing serving
and reaching out in His name.

STAFF TEAM

Acting Team Rector

Revd. Anne Farmer

21 Westmarch Way, Worle BS22 7JY515610

Revd. Emma Amyes.....

15 Woodpecker Drive, Worle BS22 8SR.....521765

Revd. Chris Elms

Church Cottage, 2a St Mark's Road, Worle, BS22 7PW....515438

Revd. Dr. Gilly Bunce (Associate Priest).....01275 810610

Parish Administrator - Mrs Liz Winter

Parish Office.....515922

Safeguarding Co-ordinators

St Marks Eileen Billing.....643025

Mead Vale Geoff Amyes.....521765

Wick St Lawrence Kath Kidd.....520273

St Martins Michelle Jennings.....07850027575

Readers

Mr. Robert Taylor

9 Ramsey Close, Worle.....512139

Mrs. Penny Devereux

34 Sunningdale Road, Worle BS226XP.....511140

Mrs. Jayne Webster-Blyth

50 Pelican Close, Worle BS22 8XP.....519406

Ms. Yvonne Criddle

20 Christian Close, Worle BS22 7TP515912

Mrs. Grace Rubery

5A Madam Lane, Worle BS22 6PJ.....517561

Youth Worker

Mr Mark Fuller

email captainmarksparrow@hotmail.co.uk.....07968134959

Honorary Minister

Revd. Robin Vincent

17 Clarence Road North, WSM BS23 4AS

Know what is going on Read Worle Wide Express, Worle Parish Magazine, for news and the Community. Worle Wide Express costs 25p a month, or £2.75 for 12 issues when you pay in January. (£9.11 for 12 issues by post.) Cheques made payable to

THE PARISH OF WORLE

☐

I enclose a year's subscription of £2.75 (Jan-Dec) or Pro Rata

☐

I cannot get easily to Church, so please deliver it to my home

☐

I will collect from my Church Centre as shown

My name and address.....

.....
Clip and send to: Worle Parish Office, St. Mark's Church, St. Mark's Road, Worle.BS22 7PW

**The contributor's views are not necessarily those held
by the Church Council**

From the Bishop....



I was on the London Underground recently and saw an advert: 'Personal Beauty Delivered to you at your Homes'. It was advertising beauty products. It made me think however what it would be like if beauty could be ordered on the internet and delivered to the front door. Could a package that came through our letterbox really transform us? For beauty is of course much more than how we look on the outside. Beauty is a thing of the heart. True beauty comes from within. Indeed everything in God's creation is beautiful. As Confucius said: 'Everything has beauty, but not everyone sees it.' The Psalmist declared that everyone is beautiful, for we are all 'fearfully and wonderfully made.' We are all made in the image of God himself and God is the source of all beauty.

So as we finish our journey through Lent we need to remember that giving up alcohol, biscuits or chocolate alone won't make us beautiful. As we come to Easter and the shops are filled with chicks and eggs and Easter bunnies we need to remember that it is not ultimately what we do, how we look, or what we have that makes us beautiful. Beauty, true beauty, comes through the cross and the resurrection. Our lives are changed not by what we stop eating, or what creams we might put on our faces. It is the Holy Spirit who truly transforms our lives, so that we become the people God is calling us to become.

When Jesus spoke to the woman at the well he said that the water he gives is like a spring of water welling up to eternal life. Her response was to say to Jesus 'Give me this water'. May that be our prayer too: 'Lord, give us the water of life, that we might become more like Jesus.'

Rt Rev Peter Hancock
Bishop of Bath and Wells

WHAT'S ON IN APRIL

Thrive Parish of Worle Youth Group meet on Fridays at St Mark's Church 7pm

Saturday 1	10.00am	Sanctuary Morning at St Lawrence Church
	7.00pm	Quiz Night at Lawrence Village Hall
Wednesday 12	7.30pm	Parish Prayer at St Martin's Church (preceding Compline)
Friday 14	11.15am	Good Friday Walk of Witness outside Co-op on Worle High Street
Saturday 15	10.00am	Mead Vale Coffee Morning in the Community Hall
Sunday 23	2.30pm	St. George's Afternoon Tea at St Lawrence Village Hall
Monday 24	7.30pm	Annual Parochial Church Council Meeting in Mead Vale Community Hall

SERVICE TIMES ON SUNDAYS

For weekly variations please go to the parish website www.worlewide.org.uk and click on the relevant church page.

Children's activities take place in all our churches during morning services

St Martin's

8am Holy Communion
10.00am Holy Communion
(Morning Praise
every 3rd Sunday)

6pm Choral Evensong (3rd)
Fifth Sunday Service (5th)

St Mark's

10.30am
with Holy Communion celebrated
alternate weeks (2nd, 4th & 5th)

Mead Vale

10.30am
with Holy Communion celebrated
alternate weeks

6.00pm Evening Prayer (2nd)
6.00pm Pub Presence (4th)
(The Nightjar Pub)

St Lawrence

10am (1st and 3rd Sundays)
Informal and family friendly
6pm (2nd and 4th Sundays)
Quiet and traditional

MIDWEEK SERVICES OF HOLY COMMUNION

Wednesdays *9.30am at St. Mark's **Thursdays** 10.00am at St. Martin's
*First **Wednesday** in the month 10.00am Mead Vale Community Hall

Parish Page



Team Rector Vacancy + Parish prayer

Last month, we re-advertised in the Church press for our new Team Rector. The deadline for applications is 20 April. We continue to pray for this process and the parish at **St Martin's Church at 7.30 – 8pm on Wednesday 12 April.**

Encouraging conversations

Over the coming months there will be opportunities in our churches for cake and conversation. This is a chance to have more than the 'chat at the door' after church to get to know each other in a different setting with no agenda. Please look out for notices in the churches.

Good Friday 14 April – Walk of Witness

As usual we will be having a walk of witness onto Worle High Street on Good Friday, partnering again with Worle Baptist Church. **Good Friday services will begin at 10.15am in St Mark's and 10.30am at St Martin's**, we shall then assemble outside the Co-op on the High Street at 11.15 to remember Jesus' death on the cross and celebrate his resurrection at Easter. This is always a much

Thrive Youth Group – meet twice in April, either side of Easter at 7pm at St Mark's.

Friday 7 – Easter Eggs, craft, chocolate and the real meaning of Easter

Parish APCM



Join us at Mead Vale Community Centre for our Annual Parochial Church Meeting (some might find it easier to think of this as the AGM) on Monday 24 April at 7.30pm. This is a great opportunity to gather together as a parish to celebrate, look back at 2016 and look forward to 2017. There will be opportunities to serve God on our church leadership groups and WPCG and the meeting will conclude with cake.



St Lawrence Church, Wick St Lawrence



Seeking sanctuary – The month begins with a Sanctuary Morning on **Saturday 1 April** in church. Drop in any time between 10am and 12.30pm for peace, quiet, prayer and maybe to light a candle. Refreshments are provided. Soviet poet Boris Pasternak very wisely wrote, *“When a great moment knocks on the door of your life, it is often no louder than the beating of your heart, and it is very easy to miss it.”* A very sound reason, then, to seek silence in order to hear God’s voice beyond the noise and busyness of the day.

Quiz Night on Saturday 1 April in Wick St Lawrence Village Hall from 7pm. Tickets £2.50 to include nibbles, bring your own drinks and snacks, teams of 4 or 6.

‘Now the green blade riseth....like wheat that springeth green...’

John Campbell Crum



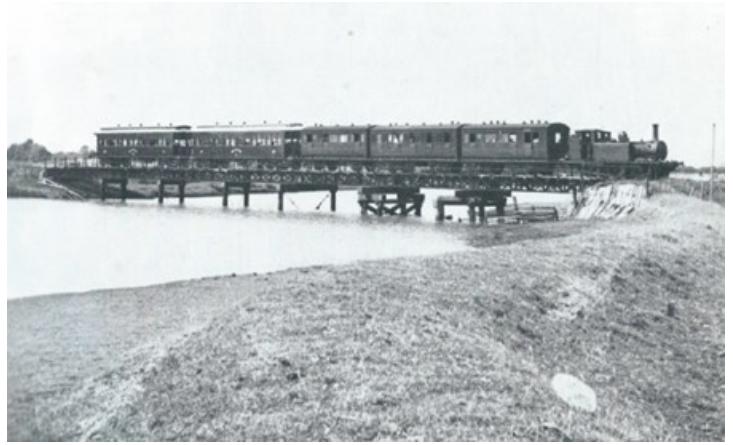
It is always good to see signs of spring in Wick St Lawrence with spring planters around the estate and daffodil filled verges through the village. During March and into April lambs and calves have been born in the village, with one farm reporting four calves born in one day during a particularly busy week

Since November cattle have been kept indoors in the dry and warm feeding on winter fodder gathered last autumn. However, cattle relish having the sun on their back so as the grass begins to green and the ground temperature reaches 10 degrees it’s time for them to be let out into the fields. For adolescent cattle it’s like the last day of term as they run laps around the fields with joy at being free. The ‘oldies,’ twelve and thirteen year olds, will put on a turn of speed but leave the youngsters to frolic whilst they get on with the important business of getting their heads down to feed.



Maundy Thursday. As well as all the services in the parish over the Easter weekend, Wick offers a quiet service of Holy Communion on Maundy Thursday 13 April at 7.30pm. A much appreciated time of quiet.

Then and Now: WC&P Light Railway in Wick St. Lawrence



Wick St. Lawrence and Worle have always had strong connections. These are now reflected in the modern Parish of Worle, which is responsible for Church of England churches in both areas.

In days gone by, one of the most significant links took the form of our wonderful light railway from Weston via Clevedon to Portishead. The railway from Weston to Clevedon was completed in 1897 and was later extended to Portishead. The mid-point of its route was considered to be the stop at Wick St. Lawrence, which was 3.8 miles from Weston. The Wick stop was serviced by a small shed-like station as early as 1910. The picture top left was taken on 5th April, 1934 when the wooden bridge leading to Wick Jetty collapsed under the weight of the 'Hesperus'. Just north of the Wick station the dear old railway had to negotiate the River Yeo, which is pictured above right, in 1937, with the river at high tide. The remaining stanchions of the bridge were photographed, below in 2015.

The WC and P service operated at a snail's pace and was somewhat unreliable, but was regarded with fondness. Outings to Clevedon or Weston were popular and many of the older generation tell tales of picking wild flowers or mushrooms along the way. There is a strong case for claiming that the portion of the line from Worle Town, via Ebdon Lane, Wick St. Lawrence, Wharf, to Ham Lane was the most attractive, interesting and dangerous section of the little line.



The line closed in May 1940 and is still deeply mourned. Links with our neighbours are just as important as they ever were and are always a serious loss.

Raye Green Worle History Society

Next meeting: 6 April @ Lawrence Road Community Centre 7pm 100th Meeting Celebration

Easter Services in Worle - The Journey from Palm Sunday to Easter

PALM SUNDAY 9 April

St. Martin's (8am and 6pm services as normal)

10.00am Holy Communion with Palm Crosses

St. Mark's

10.30am All Age Holy Communion with Palm Crosses

Mead Vale

10.30am Morning Worship with Palm Crosses

St. Lawrence

6.00pm BCP with Palm Crosses

HOLY WEEK

St. Martin's

8.00pm Monday 10th - Tuesday 11th - Wednesday 12th,
Holy Week Meditation and Compline.
Wednesday 12 April preceded by Parish Prayer at 7.30pm

MAUNDY THURSDAY 13 April

St. Martin's

7.30pm Holy Communion

Mead Vale

6.00pm Holy Communion

St Lawrence

7.30pm Holy Communion

GOOD FRIDAY 14 April

Services at St Martin's (10.30am) and St. Mark's (10.15am)

Followed by walk of witness to Worle High Street meeting
outside the Co-op at 11.15am, with Worle Baptist Church

EASTER EVE 26 March

St Martin's

7.00pm Service of Light

EASTER DAY 27 March

St. Martin's

8.00am Holy Communion

10.00am Family Communion

St. Mark's

10.30am Easter Celebration with Holy Communion

Mead Vale

10.30am All Age Communion

St. Lawrence

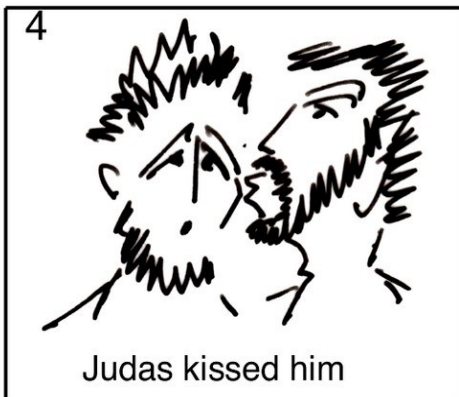
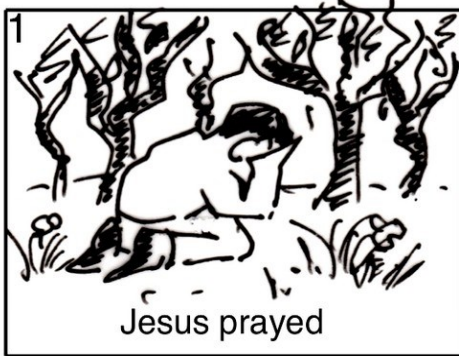
10.00am Easter Sunday Celebration followed by a short said Holy Communion
at 11.15am

SERVICE OF THANKSGIVING SUNDAY 17 May

St. Martin's

6.00pm Service in Memory of Loved Ones

They all left him!



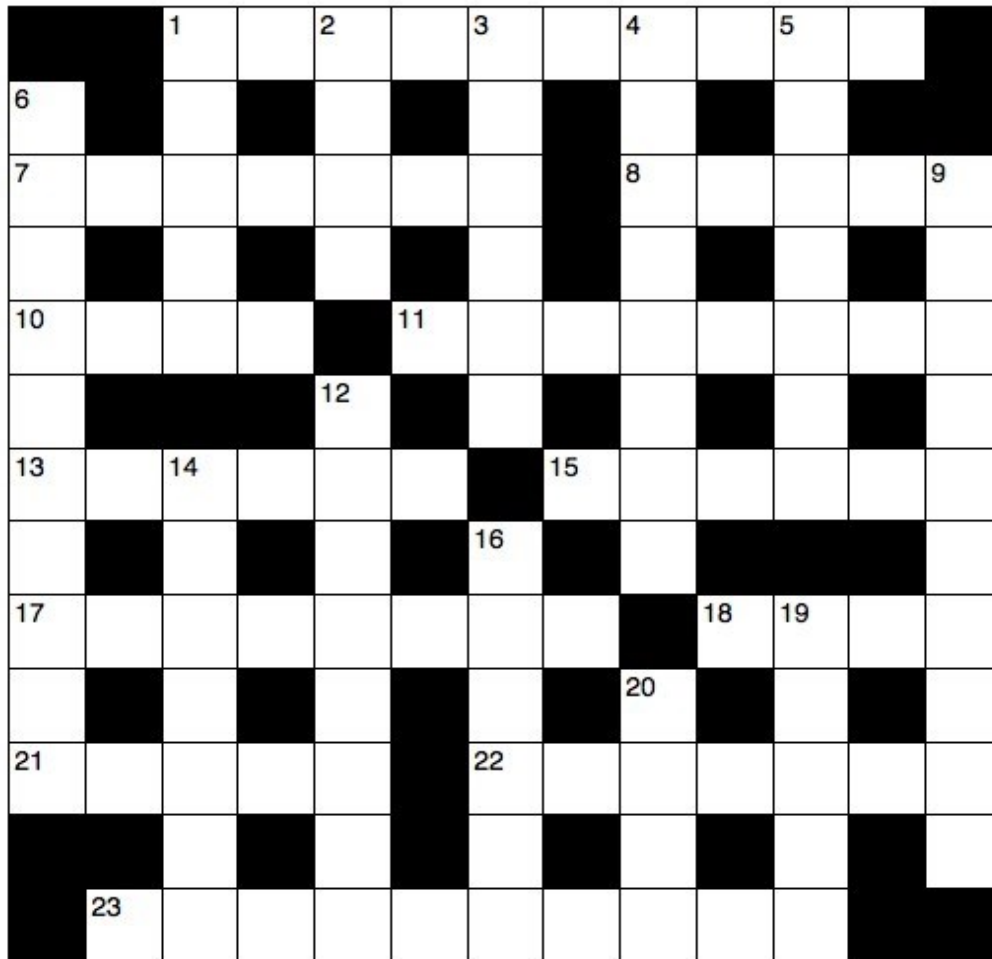
When it comes to the crunch how many of us will really keep going with Jesus?

Some of his immediate followers fell asleep three times when Jesus was agonising in prayer. They couldn't stay awake and in this sense let him down - betrayed him - when he knew he would soon be killed.

Soldiers came and another of his followers - Judas - betrayed Jesus with a pre-arranged signal: a kiss. He was arrested - and what did his followers do? Ran away. They all left him.

How will you and I respond if our faith is put under pressure? Read more in Matthew 26: 36-56





Across

- 1 'You are a chosen people, a royal — ' (1 Peter 2:9) (10)
 7 Exact copy (Joshua 22:28) (7)
 8 Jesus' first words to Jairus's daughter, 'My child, — — ' (Luke 8:54) (3,2)
 10 Idol made by the Israelites while Moses was on Mount Sinai (Exodus 32:4) (4)
 11 Role allotted to Joseph in Egypt (Genesis 42:6) (8)
 13 'Lord, when did we — — hungry and feed you?' (Matthew 25:37) (3,3)
 15 'Though seeing, they do — —; though hearing, they do not hear or understand' (Matthew 13:13) (3,3)
 17 Happening (1 Kings 21:1) (8)
 18 'Whatever was to my profit I now consider loss for the — of Christ' (Philippians 3:7) (4)
 21 National Society for the Prevention of Cruelty to Children (1,1,1,1,1)
 22 Stamp on (Amos 2:7) (7)
 23 Liable to rot (1 Corinthians 15:42) (10)

Down

- 1 Of the pope (5)
 2 'The earth is the Lord's, and everything — — ' (Psalm 24:1) (2,2)
 3 Hebrew word for the kind of peace that Jesus promised (6)
 4 Member of a 16th-century Protestant reform movement in France (8)
 5 Sing out (anag.) (7)
 6 Ceremonial column of people on the move (1 Samuel 10:5) (10)
 9 One of the things love always does (1 Corinthians 13:7) (10)
 12 Esther's cousin who foiled a plot to assassinate King Xerxes (Esther 2:7, 22) (8)
 14 See cape (anag.) (7)
 16 'No one can — them out of my hand' (John 10:28) (6)
 19 Often mistakenly identified as the fruit that led to the first sin (Joel 1:12) (5)
 20 'He was led like a — to the slaughter' (Isaiah 53:7) (4)

St. Mark's Church



Christian Aid Fair at St Mark's church on 13th May

Do you want to do something to support people who are suffering from poverty and natural disasters? Come along to our Christian Aid fair and together we can raise some money for this excellent charity.

Christian Aid UK is a charity that is active in over 60 countries helping people, regardless of religion or race.



It works to support [sustainable development](#), stop poverty, support civil society and provide disaster relief in South America, the Caribbean, the Middle East, Africa and Asia. For example, they have launched an East Africa Crisis Appeal - **people are dying daily from hunger and malnutrition across East Africa. This is the worst humanitarian crisis since 1945. Famine has been declared in parts of South Sudan, where 100,000 people face starvation** and nearly 5 million people urgently need food. This crisis follows more than three years of devastating conflict, which has left millions of people without a safe place to call home.

Christian Aid has a phrase to sum up their belief - "We believe in life before death". Why not come along to our fair between 10am and 2pm? There will be games, face painting, books and toys for sale, Splat the Rat, a bouncy castle, cakes and drinks – lots of fun! Together we can do our bit to help people less fortunate than ourselves.

Lent Lunches

Each Saturday during March we held a Lent Lunch in the main church space. With Lent being a season of reflection, where we remember Jesus' 40 day trip into the wilderness, we had a frugal lunch of soup and bread and offered a donation towards the Christian Aid East Africa Crisis Appeal. That said, the lunches weren't frugal in spirit! The atmosphere was warm and friendly, with lots of chatting and friendship.

With love, Revd Chris

St Martin's Church



Mission Sub-Group News

Whilst the Church continues to struggle with its finances we are guided to still endeavour to help our brothers and sisters who are less fortunate:

Proverbs 19:17 - **Whoever is kind to the poor lends to the Lord, and He will reward them for what they have done.**

For some years, our Mission Sub-Group has been attempting to raise monies to support folk in Zambia where we are linked with the Anglican Central Diocese. Recently, fundraising has enabled us to help the Hands of Compassion School to improve the education and welfare of orphaned children in and around Chipulukusu, but the Zambian Government has now taken control of this, and other independent schools in the country. Whilst we can be pleased with what has been achieved so far, we must endeavour to continue to support other members of the poor and the ailing. During this year, we will look at one or two fundraising events to give aid to other ministries in the area but meanwhile would ask that you remember to give your loose change through the carboy in church. **Neil Adams**

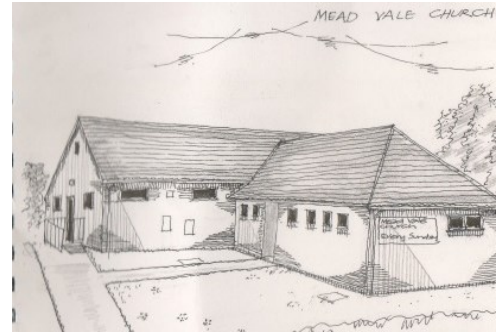
Are you called to Serve?

As we approach this years AGM we are seeking a couple of people to serve on our Leadership team. Many in the past have found it to be rewarding. The future will be offering opportunities and challenges for St. Martin 's with the appointment of our new Team Rector. If you would like to be part of the Team, why not have a word with Revd's Anne and Gilly or Paul Elliott and Barbara Perkins. Nomination forms will shortly be available. Also, we have a vacancy on the Deanery Synod, which again offers an opportunity of seeing a wider picture. There are exciting times ahead with the work of the Deanery Synod becoming more meaningful and supportive to our parishes, which of course will benefit our churches in Worle. Look out for the explanation form out soon!

Film Nights - The series of Free Film Nights have come to an end this season. What films would you like to see when the new season starts on **Saturday 30th September**? Why not have a word with Paul and Joan Elliott, the films can be your favourites from the past or a recent film you missed in the cinema. Thank you to all who have supported the Film Nights.

Paul Elliott

Mead Vale Church



On Saturday 25th March, we had our Mothering day Outreach and we gave bunches of flowers to all the mums and women that passed us outside the church. We handed out approximately 100 bunches to women, men and children who were pleased to be blessed in this way. It's good for us to be out in the community and letting people know that there is a church here for them! Our next outreach is on Easter Saturday when we shall be blessing the people in our community with Easter eggs.

We look forward to celebrating Easter at Mead Vale. We shall be “journeying with the cross” starting on Maundy Thursday with a reflective service of Holy Communion at 6pm in the centre and taking the cross with us through Good Friday's service at St Martin's Church and open air service on the Worle High Street. On Easter Saturday the cross will be with us for our “outreach”. At our All Age Holy Communion Service on Easter Sunday the cross will be back in the Community Centre as we celebrate Christ's resurrection! Details and times of these services and events can be found in this magazine.

Every second Sunday in the month, we are offering prayer ministry after the service. Greg Webster and Paul Harding are happy to pray for anyone about anything, however large or small, or if you just want to be encouraged. **Our Prayer Ministry time for April is Sunday 9th - Palm Sunday.**

We look forward to hosting the APCM on April 24th at 7.30pm. A great opportunity to come together as a parish and hear what God has done and is doing in the life of our churches. It's also a good opportunity to have fellowship across the parish with one another. Please do join us, refreshments will be provided.

Rev Emma Amyes

From the Registers



Baptisms in St Martin's
26 February Naia Edwards-Vincent
Maisie Caitlin Webber

Baptisms in St Mark's
5 March Amelia Rita McGarry
Olivia Jayne McGarry



Funerals in March

Dennis Broughton	aged 81
Martin Thomas Carpenter	aged 80
Ernest Morley	aged 91
Benita Mead	aged 84
Trevor Moulton	aged 93
Leslie Kenneth Osborn	aged 89
Peggy Williams	aged 86



April Prayer

Lord God our Father
As we welcome the renewal
to our torn and troubled world.
May we reflect your peace among
those with whom we live.



USEFUL LOCAL DETAILS

Citizens Advice Bureau, Badger Centre, 3-6 Wadham Street.....836200
Opening: Mon, Tues, Wed & Fri 10.00am - 3pm

CVS—W-s-M Council for Voluntary Services,
Room 6, Roselawn, 28 Walliscote Grove Road,..... 631169

Community Association Contacts in Worle:
Lawrence Road Community Centre: Mrs. J.C.M. Thompson.....515681
Mead Vale Community Centre, Redwing Drive,: Paddy Payne.....239186

Doctors Surgeries

Dr R J B Bowering & Partners:
Riverbank Medical Centre, Walford Avenue, North Worle,
Weston-super-Mare BS22 7YZ.....521133

Dr M H Pimm & Partner:
The Cedars Surgery, 87 New Bristol Road, Worle.
Weston-super-Mare BS22 6AJ.....515878

Dr N D Patel
The Village Surgery, Hill Road East, Worle
Weston-super-Mare BS22 9HF..... 516671

Worle Medical Practice, High Street, Worle BS22 6HB..... 516789

Pharmacies:

See local chemists rota for late night opening but Milton Pharmacy,
260 Milton Road is open Monday 8am till Friday 8pm ,
Saturday 8am to 2pm and Sunday closed. 413100

Samaritans call any time.....632555

Waste Disposal Tip, Herluin Way.....419447

Sat 9.00am - 4.00pm; Mon - Fri 8.00am - 4.30pm Sunday 9.00am - 4.00pm
From 1 March 2017: Mon, Wed, Fri, Sat and Sun 9.00am - 4.00pm Tues and Thurs 10.00am - 4.00pm

North Somerset Town Hall WSM.....888888

Worle Library, High Street.....426090

Open: Mon, Tues 9.30am—5.30pm

Wed Closed

Thurs. 9.30—5.30

Friday 9.30—7.00pm,

Saturday 9.30am—1.00pm and 2.00pm—4.00pm

Mobile Library Service.....426020

Guide contact numbers

Worle District: Ann MacDonald.....642053
Moiria Wilmot..... 521980
Milton District: Liz Griffiths 624366
Priory District: Andrea Drury..... 515208
Sue Cox..... 515913

Scout & Cub contact numbers for Worle and Wick St Lawrence

1st North Worle - Carol Pepper..... 511459
2nd Worle - Marion Hillcok..... 521021
District Secretary- Ann Coombes..... 513699
1st Wick St Lawrence Beavers, Cubs and Scouts..... 620719

WORLE PARISH - ESSENTIAL INFORMATION

(E.Mail) office@worlepo.co.uk (Website) www.worlewide.org.uk

Parish Churchwardens:

Paul Elliott 513968

Parish Administrator Liz Winter

Parish Office: Monday to Friday 9.00am-12 noon and Wednesday 7.00pm-8.00pm (by appointment only)
Tel: 515922

Baptisms & Weddings - Come to The Parish Office between 9-12noon Monday to Friday or Wednesday Evening 7-8pm (by appointment only)

Church Schools

St. Mark's Primary School, a Bath & Wells Academy..... Tel: 513008
St. Martin's Primary C of E (V.C.) Primary School.....Tel: 628651
St. Georges Church School, a Bath & Wells Academy..... Tel: 426901

WHAT'S ON AT ST MARKS

Home Groups

Midweek adult fellowship and study....
Colin Guichard 521792 Rev Chris and Jody Elms 515438

Sunday Morning Teaching Groups for ages 0-13

Young People during the week Rainbows: Weds 4.30pm-5.30pm (Julia Watt 420422)
Brownies Mondays and Wednesdays (Sue Cox 515913)
Pre-school Monday to Friday (515922)
Guides on Wednesday (Nicky Parker-Hall 518406)
The Parish Office 515922 (Liz Winter)

Lettings.....

WHATS ON AT ST MARTIN'S

Choir..... Richard Lennox 07710788911
Church Cleaning Group. Thursday Morning
Bellringers..... Jim Lambard 514004
Sacristy..... Communion, Servers, Vestments Joan Elliott 513968
Baby & Toddler Group..... Revd Anne Farmer 515610
Little Martin's Children's Group Every Sunday during 10.00am Service

WHAT'S ON AT MEAD VALE

Life Group.... Penny Devereux 511140
Coffee Morning.... Wednesdays 10.30am in the Nightjar / 3rd Saturday in every month
Mead Vale Community Centre 10.00am
COSMIC.... Sunday morning groups for children
Lettings.... Paddy Payne 239186

WHAT'S ON AT ST. LAWRENCE

Open Church During daylight hours the church is open for anyone seeking a sanctuary of peace and quiet
Bellringers Paul Tomlinson 515853
Choir Elizabeth Glen 832283 (Youth) Jaqueline Hockley 520956 (Adult)
Sunday Club & Sunday Youth Gang Sunday morning groups for children and young people. Contact Revd. Anne Farmer 515610