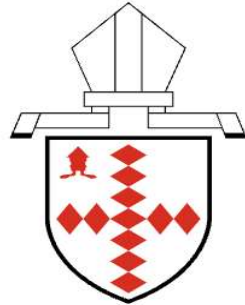


# Deaf People in Church; Deaf Church Spaces

@



The Diocese of  
**Southwark**

Penny Beschizza  
Southwark Deaf Ministry

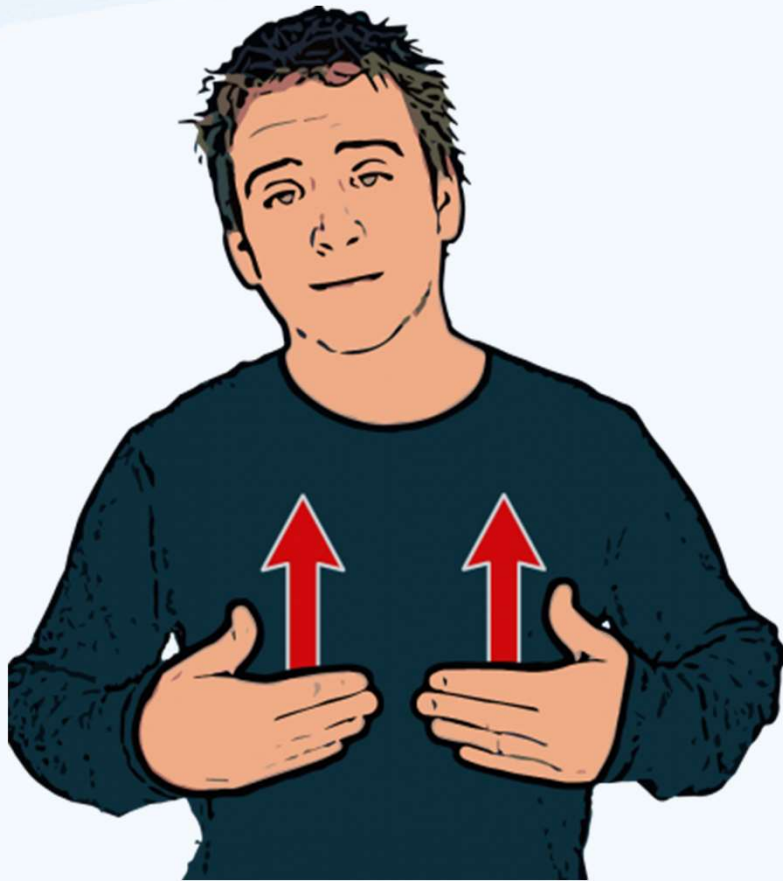
*Hi, Hello, Hey?*

*BSL: same*



*How are you?*

*BSL: You, well-good?*



- Why are Deaf People distinct from people with Disabilities?

- Why couldn't Deaf People follow Church Services?

- People with hearing losses are “One in Seven” i.e. of the UK Population (currently 70 million = people with hearing loss rapidly increasing towards at least 10 million).
- DEAF PEOPLE ARE THOSE WITH SIGNIFICANT HEARING LOSS REQUIRING COMMUNICATION ACCESS, SOME USE CAPTIONS, SOME USE SIGN LANGUAGE.
- HEARING LOSS IS A FACT: THE WORD “DEAF” IS STIGMATISED.

## *Contents:*

- *Basic Greetings*
- *History of one Deaf Church in London*
- *Layout of Deaf Church Space*
- *Why Deaf people are distinct from people of other disabilities*
- *Why Sign Language is so different from spoken/written language*
- *Fingerspelling taster*

# Links to Deaf Church History

- <https://londondeafchurch.com/useful-info/st-saviours-history/>
- <https://historyof.place/location/st-saviours-deaf-church/>
- <file:///C:/Users/user/Downloads/DeafChurch.pdf>
- <https://deafchurch.co.uk/>



# Links to related Deaf Churches & Deaf Christian Organisations

- <https://www.gosign.org.uk/>
- <https://www.openeears.org.uk/about-us/>
- <https://kingschurchlondon.org/lee/#deaf>
- <https://deafanglicanstogether.org.uk/about-us/>
- <https://christianbsl.com/>



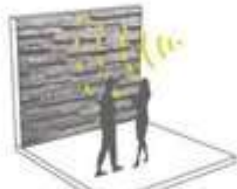
ACOUSTIC MITIGATOR



GREEN WALL



SOFT GROUND PLANE



TEXTURED WALL

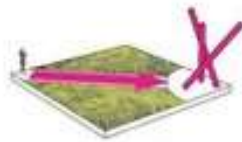


GREEN BUFFER

WAYFINDING



PAVING PATTERN



LANDMARKS

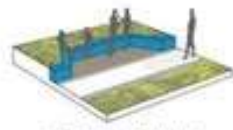


VIEW CORRIDOR

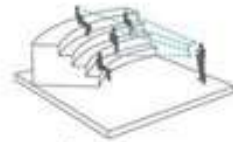


INFO GRAPHICS

ACCUMULATORS



3-SIDED BENCHES



AMPHITHEATRE



PEDESTAL SURFACE



FLEXIBLE SPACE

LIGHTING



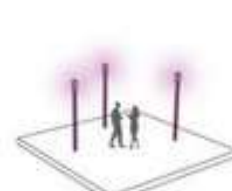
ARCHITECTURAL LIGHTING



INDIRECT LIGHTING

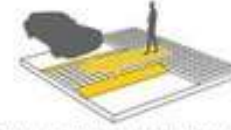


REFLECTED LIGHT



DIFFUSED POLE LIGHT

CROSSING/TRANSITIONS



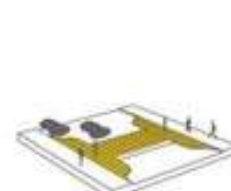
RAISED PEDESTRIAN CROSSING



TEXTURED TRANSITIONS

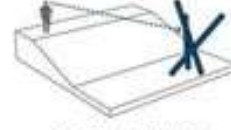


WAITING ZONE



SHORTENED CROSSING

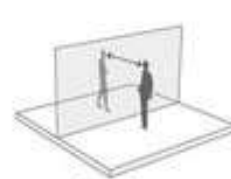
SIGHT LINES



ELEVATED VANTAGE



CURVED FACADES



GLASS FACADES



CLEAR SIGHT ZONE



- WHY IS BRITISH SIGN LANGUAGE SO DIFFERENT FROM SPOKEN ENGLISH?

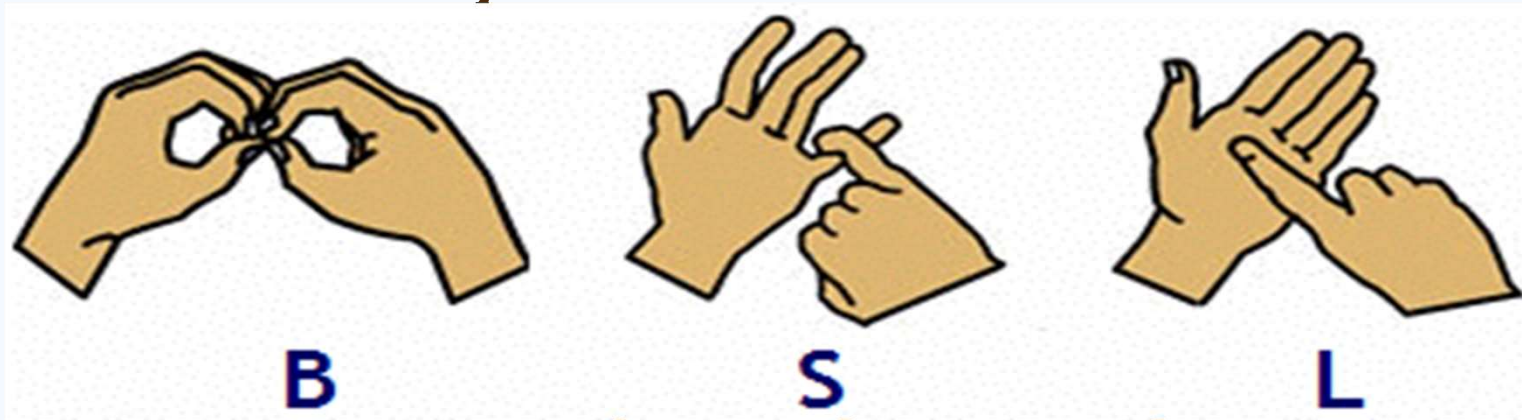
- BSL IS VISUAL – HENCE THE EYES-LED APPROACH INFLUENCE THE SYNTAX OF SIGN LANGUAGE.

- SIGN LANGUAGES ARE SIMILAR IN STRUCTURE TO TRIBAL & ISLAND LANGUAGES (WITHOUT WRITTEN FORMS): PRAGMATIC & DIRECT.

# FINGERSPELLING:

Using your hands!

How do you feel about that?



To get your hands working, try these signs of farm animals!



**ANIMAL**



**CHICKEN**



**PIG**



**SHEEP**



**COW**



**DUCK**



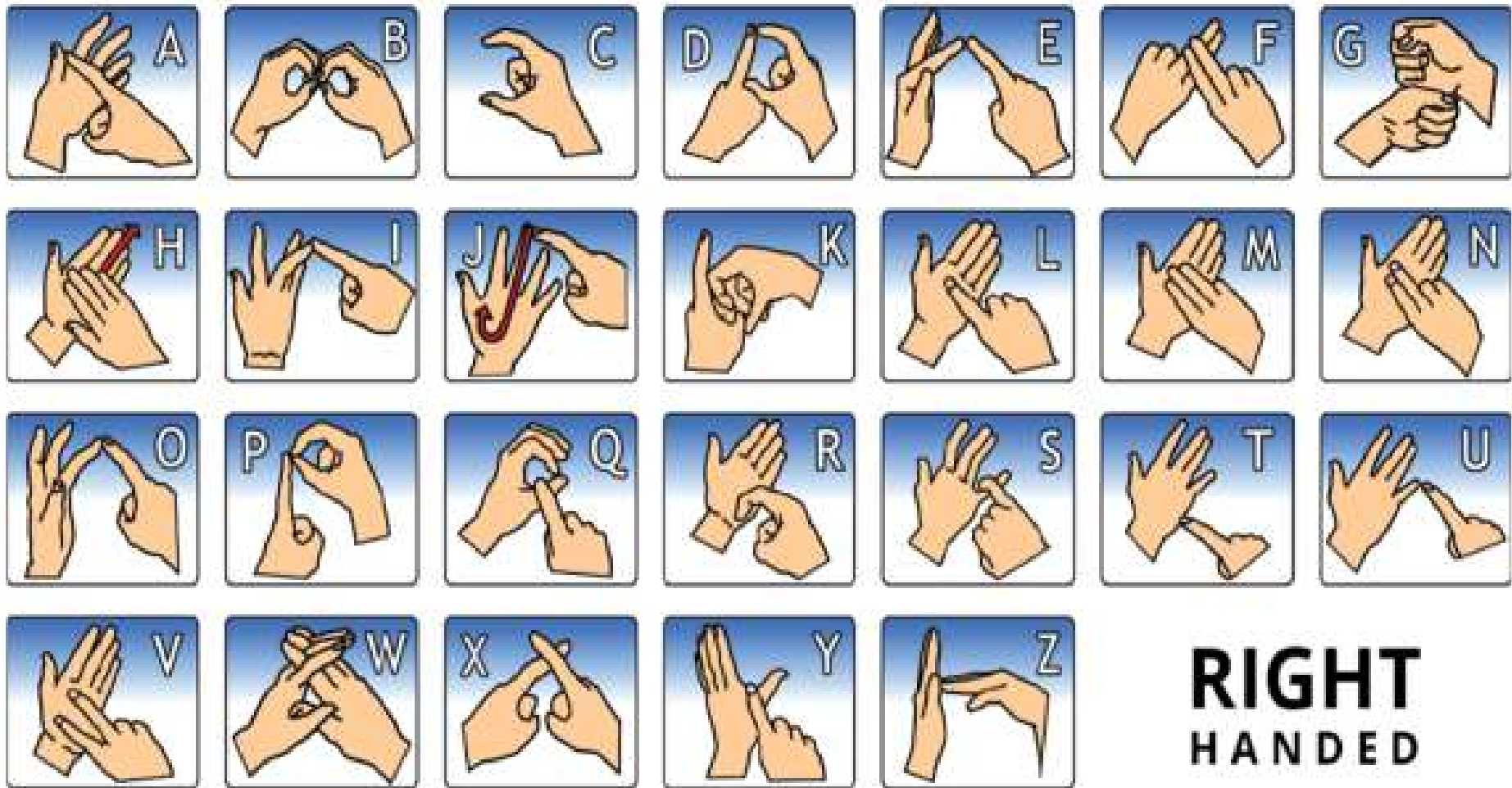
**EGGS**



**MILK**



**FARMER**



**RIGHT  
HANDED**



**British Fingerspelling is believed to have developed from monks in Early Christian Britain at least 1000 years ago.**

**Close-knit communities cause in-breeding: babies born from close relatives are highly likely to have disabilities, including hearing loss.**

**Families 'gave away' deaf children to monasteries who taught them how to read & write, hence the affinity of fingerspelling with British lettering.**

**Those young deaf people were likely to have been involved in illustrating & writing Bibles.**



- **Hello/Hi**
- **Hello/Good**
- **How are you?**
- **I'm fine/good/well**
- **Alright/fine/ok**
- **Name you what?**
- **Name me**
- **Pleased (to) meet (you)**
- **Please/Thanks**

I await employment status within the  
Diocese later this year.

Current email: [pennybes@aol.com](mailto:pennybes@aol.com)  
SMS: 07734 467143

