

Parish Profile

Parish of Mottram in Longdendale

www.mottramparish.org.uk

compiled in October 2019



Serving the communities of
Mottram, Broadbottom and Hattersley East
and
Seeking to know Christ, and make Christ known

Our Prayer for the vacancy

*God, who in generous mercy sent the Holy Spirit upon your Church in the burning fire of your love:
grant that your people may be fervent in the fellowship of the gospel that, always abiding in you, they may be found steadfast in faith and active in service;
through Jesus Christ your Son our Lord, who is alive and reigns with you, in the unity of the Holy Spirit, one God, now and for ever.*

Contents

Our vision for the future	3	The church in the community	16
Where have we come from?	3	Social activities.....	16
Where are we now?.....	3	Fundraising.....	17
Where are we going?.....	3	Community outreach - mission.....	18
What are we looking for in our new vicar?	4	Community outreach - offering a helping hand	19
What did the congregation say?.....	5	The church in its wider context.....	21
The Parish of Mottram in Longendale	6	Mottram Deanery in Chester Diocese	21
The parish and its people.....	8	Training for ordinands	21
The Vicarage	9	Links with other local churches	21
Transport links	9	The church buildings	22
Schools	9	Vicarage and ‘Curatage’	22
Around the parish	10	The Parish Church of St. Michael & All Angels	22
Community events.....	10	Our Big Plan for St. Michael’s	23
Mottram Parish Church.....	11	The Magdalene Centre	24
Our regular worship pattern.....	11	Looking after our church buildings and grounds.....	25
Other services	11	The Friends of Mottram Parish Church	26
The congregation	11	Heritage Open Days	26
Children and young people.....	12	The Bells... the bells.....	26
Meet the team	13	Finance.....	27
Prayer and Bible study	15	Notes on the 2018 Accounts (available separately).....	27
		September 2019 update	27

Our vision for the future

Where have we come from?

Three years ago we had a ministry team of seven, with a vicar, curate, honorary curate, three readers and a licensed pastoral worker. Today, we have two Readers Emeritus, one of whom is chronically ill - the other plans to retire. Our curate left us in 2017 to take up his own parish and in 2019 the remaining reader was ordained and moved to a nearby parish. Two years ago we appointed a Parish Development Worker to enable greater outreach in the community. Sadly, for personal reasons she has recently announced her resignation.

However in many respects we have many reasons to be positive about the future of Mottram Church....



Where are we now?

Our congregation feels that we have a good range and balance of services - fairly middle ground, neither too traditional nor too modern. In addition to our regular services here at St Michael's we have a midweek shared communion service at St Barnabas Church in neighbouring Hattersley.

We have developed our lay ministry over the past few years and have strong leaders of our baptism, pastoral, children's and youth teams. However, like many churches, we struggle to engage congregation members in certain areas of service - particularly with the upkeep of the church buildings and grounds.

Our outreach to the community has grown and developed enormously in recent years, and we have been particularly blessed in this by partnership with other local churches, and by the (now vacant) post of Parish Development Worker. There are regular activities for toddlers and older adults, and outreach to residents at a local nursing home and sheltered housing schemes.



For many years we have had strong links with our two church primary schools and have recently strengthened our links with Arundale (secular) primary school. All three schools are encouraged to make use of our church buildings.

Where are we going?

We have much to be thankful for as we reflect on what God has done for us over the past few years, and much encouragement as we look to the future.

We are looking for someone who will help us to build on what we already have in place, and help us grow in numbers, discipleship and commitment, and the nurturing of new members. Although we have a variety of services and welcome all newcomers, our church membership has not increased significantly. We have a core of regular

worshippers, but there is also a significant number who attend only occasionally. This is a clear area for development and it would be good to see an increase across all age groups.

We have a small number of prayer and Bible study groups, some of which have been attended faithfully over many years. It would be good for these to grow in number and attendance. Making time for God beyond Sunday is important, so there is a need for greater emphasis on prayer, not just within public worship but also in small groups.

We have increased and strengthened our presence in the community and this is something we wish to build on. However within the congregation there is a need to build up a greater sense of belonging to our church family and to encourage people of all ages to become involved in the life of the church, from social activities to prayer, from churchyard maintenance to Bible study.



What are we looking for in our new vicar?

In common with all church congregations we at St Michael's hold many different views and opinions. We accept that what we want, may not be what God wants for us. So who will God send?

We think that he or she should:

- ***be an inspiring preacher and teacher:***

- with a Bible based ministry

- have Jesus and the Gospel at the centre of their life and ministry

- help us grow in discipleship

- help us to build up our prayer life

- help us to explore new forms of worship whilst retaining tradition and reverence

- ***have a warm personality with a heart for people:***

- have empathy, be compassionate and helpful

- be outgoing, friendly and approachable

- work closely with the pastoral team, visiting those in need of support

- ***have strong leadership skills:***

- be forward looking

- be a good listener with good interpersonal and communication skills

- be an encourager and enabler

- help us build up a greater sense of church family

- work with us as we progress our Big Plan for St. Michael's (see later), which includes carrying out essential repairs and making the church welcoming and accessible to all

- ***have a good sense of humour***

- ***be able to relate to people of all ages, sexuality, race etc***

What did the congregation say?

When asked what they wanted our new vicar to be like, our youngsters answered:



So if you're a jolly redhead (not forgetting the awesome bit) you might be in with a chance. On the other hand here are some comments from our adult congregation:



The Parish of Mottram in Longdendale

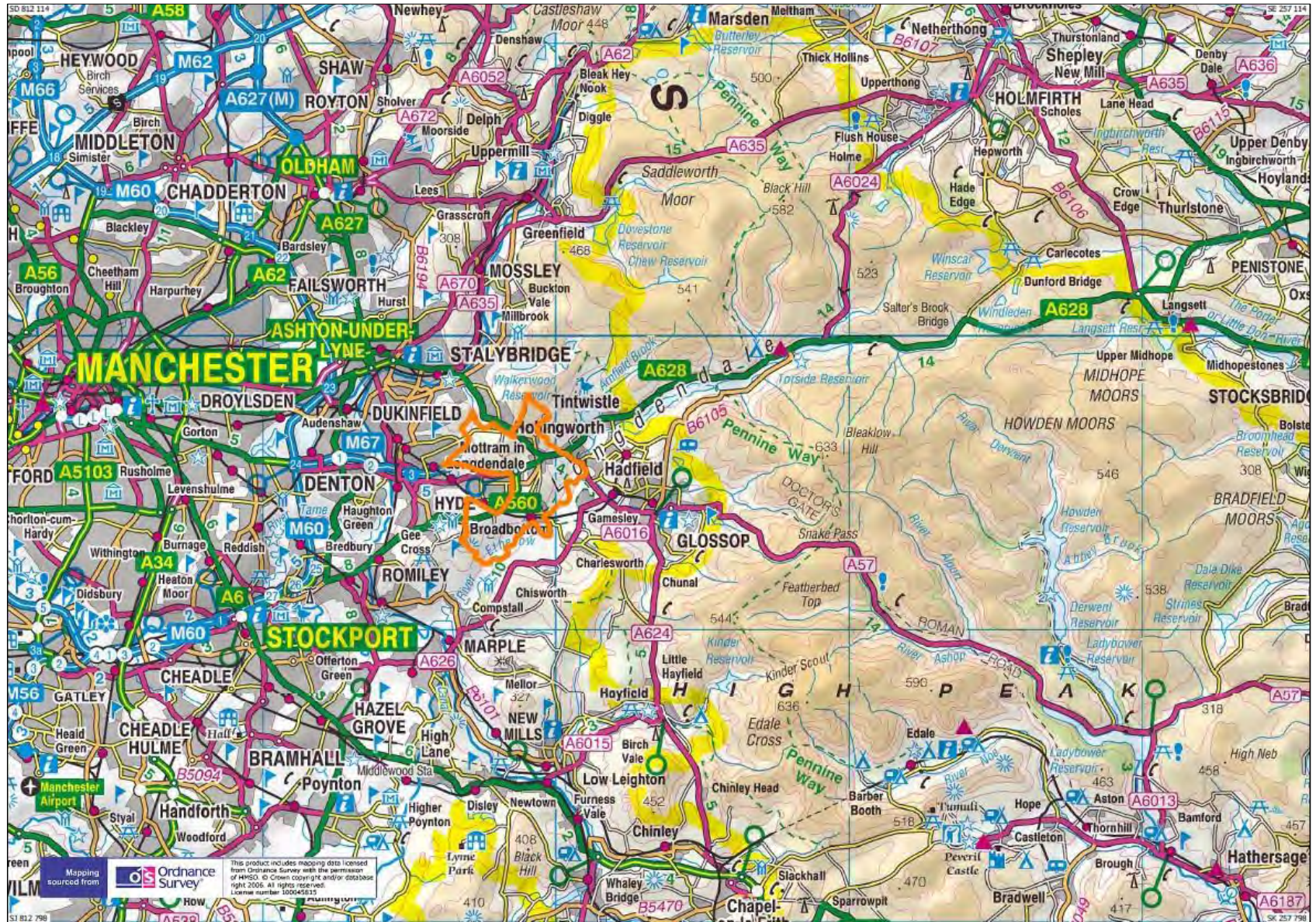
The parish is situated to the east of Manchester (shown on these maps outlined in orange).

The Manchester conurbation lies to the west, and the open moors of the High Peak to the east.

This makes the parish easily accessible for trips to the city of Manchester, with its heritage, cultural and retail offerings, or for walking in or visiting the country's first national park - the Peak District.

The area is served well by the shopping areas of Hyde, Stalybridge, Ashton and Glossop.

There are three primary schools and two high schools within easy reach of Mottram.

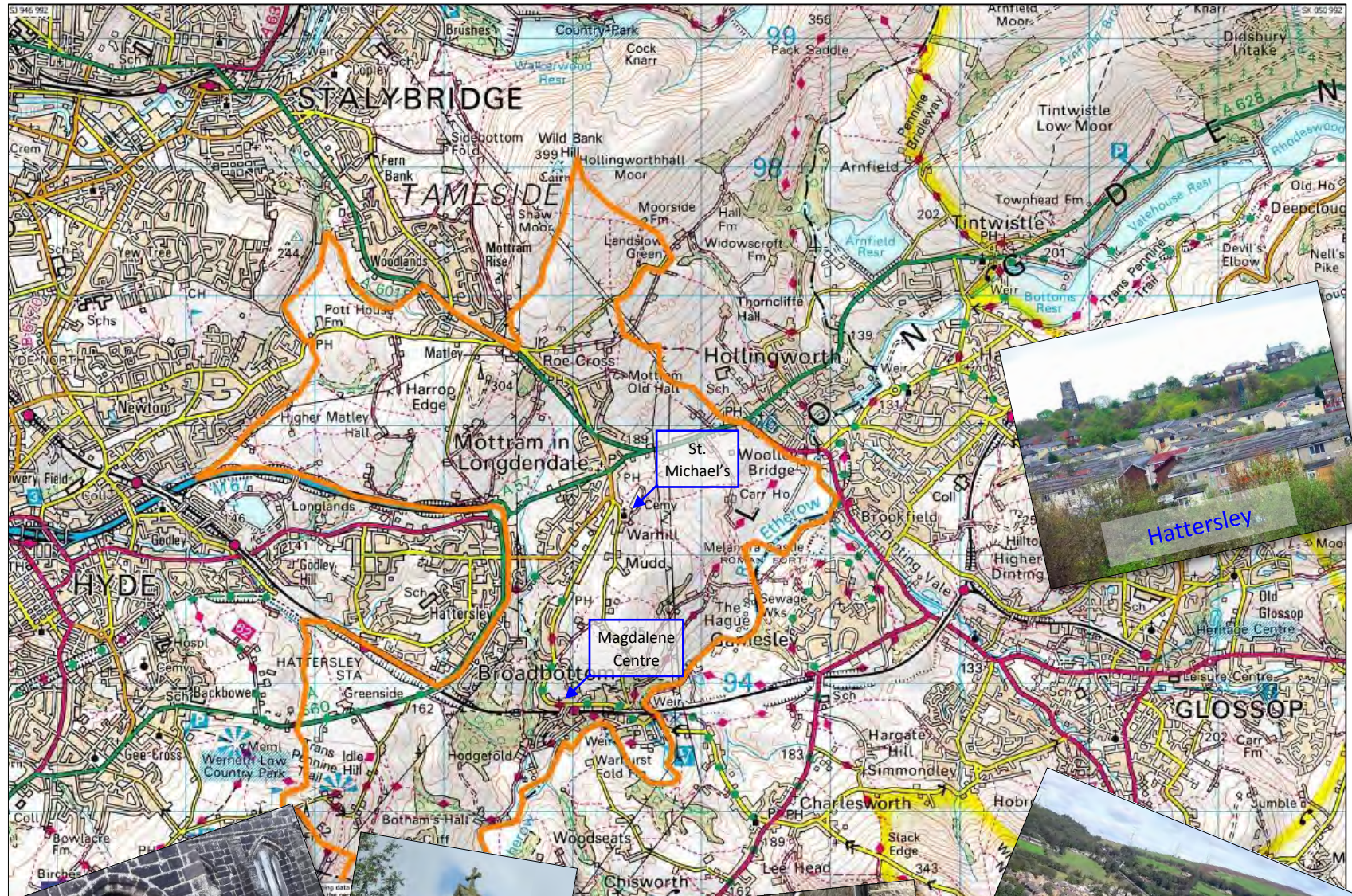


Although we are in the Diocese of Chester, administratively we are in the Metropolitan District of Tameside, Greater Manchester.

The whole of Mottram and Broadbottom are included in the parish, as is one-third of the Hattersley estate, that to the east of the A560.

Both Broadbottom and Mottram consider themselves separate villages although housing expansion has largely brought them together.

Hattersley was built by Manchester City Council in the early 1960s as an overspill estate from areas of Manchester, and the part of the estate to the west of the A560 is a parish in its own right.



The parish and its people

Mottram

The village of Mottram has changed significantly over the years. It is bisected by the busy A57 which gives rise to heavy traffic. The village has a number of small shops, including hairdressers, post office and funeral directors, all located in the centre of the village. There is a community centre, cricket club and doctors surgery.

The housing in Mottram is mixed and includes many affluent properties, some built for the former local mill owners, but has been much enlarged by modern housing during the 20th and 21st centuries. A large area of the parish comprises farmland.

There is a care home and some sheltered housing. Compared to adjacent areas, Mottram's population is a little older with more retired people although there are many working families.

The nearby Evangelical Church, recently renamed Hope Community Church, now meets at Arundale School in Hattersley, but retains its old church building in Mottram as a community outreach centre.

Broadbottom

Situated a mile and half down the hill from Mottram, Broadbottom contains many small streets of what were once mill-workers' terraced cottages and a small number of 20th century properties.

There is a small number of shops, one public house and a popular garden centre. Close by is a business specialising in printed fabrics, located in old mill buildings. It is also home to the Etherow Centre which provides facilities for disabled horse riders and an indoor bowling green. There is a community centre, an outdoor activities and crafts centre and a cricket club.

Broadbottom has a close community and active Community Association - much more so than in Mottram. Its population includes younger, professional and mobile residents, exploiting the commuter rail-link to Manchester.

Near to the railway station is the Victorian building of St. Mary Magdalene Church, refurbished around 2010 to become our church and community resource, and now known as the Magdalene Centre.

Just over the river and out of the parish is the Catholic Church of the Immaculate Conception, in the Diocese of Nottingham.

Hattersley East

Once a rural district of Mottram, Hattersley was built by Manchester City Council in the early 1960s as an overspill estate, and is now managed by Onward Housing Association. Approximately one-third of the estate lies within the parish of Mottram.

Compared with Mottram and Broadbottom, the population of Hattersley is generally some ten years younger, and includes many families experiencing social deprivation. A Foodbank operates here. Housing is a mix of new-build and the original social housing, some now privately owned.

Within our part of the estate are a small general store, and three takeaways. Just inside the parish is a large Tesco store which serves much of the surrounding district. Adjacent is 'The Hub', a community centre incorporating administrative offices, hall, library and café. The original community was close, since families moved on-site together in the 1960s; however this has waned in recent years.

The remainder of the estate has its own parish church (St. Barnabas), a Baptist Church and the Catholic Church.

The population of just over 5,600 is almost exclusively White British (approximately 99%). There is a mix of age groups from retired people to young families, and a mix of different kinds of employment, but with substantial levels of unemployment in Hattersley East. Just over half of all homes are owner occupied, and one third social housing.

Around the parish



Community events

Some of the regular events in the parish:





Mottram Parish Church

Our regular worship pattern

Our worship is principally of a traditional style but with variations.

Sunday

8.30am Said **Holy Communion** (BCP or Common Worship)

10.30am **1st Sun: All Together Worship** led by vicar and/or the ATW team, and when available - music group. Sometimes at the Magdalene Centre. Children stay in church for this service.

2nd Sun: Holy Communion (CW)

3rd Sun: Morning Praise - informal variable format service

4th/5th Sun: Holy Communion (CW)

4.00pm **1st Sun: Choral Evensong** (BCP)

Except for 1st Sunday, services are led by Vicar and Reader, with robed choir and a high quality Makin digital organ (and occasionally piano). Adults and young people are rota'd for readings and intercessions. Hymns are from a variety of sources - mainly Hymns Old and New.

At our All Together Worship, a music group often leads our worship, with two or three vocalists, accompanied by piano, organ and occasionally another instrument.

On the second Sunday, confidential, personal prayers for healing are held in the Staveleigh Chapel during communion.

Wednesday

10.30am **Joint service of Holy Communion** at St. Barnabas, Hattersley



Other services

As well as the usual highlights of the liturgical year - around Easter and Christmas - there are occasional extra services, including Taizé, an annual Memorial service at All Souls, school services etc.

Baptisms are carried out in our normal 10.30am service, preceded by a Thanksgiving service and baptism preparation meetings.



Occasionally, our All Together Worship is held at the Magdalene Centre, which is more suited to props and dramatic presentations. Our annual Big Christmas Sing is held there, and we are asked to lead carols around the Mottram Village Christmas tree by the local community.

Remembrance services are led by the church, both at the war memorial in St. Michael's and the cenotaph at Broadbottom.

The congregation

There are currently 139 people on the electoral roll. Our usual weekly attendance, counting both services, is around 100 adults and 24 children. Around 20% of the congregation live outside the parish.

The 8.30am service can attract up to 25 people, with a core of 6 or 7 faithful attendees.

The numbers show a downward trend, and given that a significant number of people do not attend regularly, this represents a challenge for the future.

Children and young people

We love having children of all ages with us at church. They are not just the 'church members of the future' - they are part of the church now!

Our young people are a great asset to the church, both as individuals and as a group. We strive to give them a good grounding in their beliefs and encourage them on their journey of faith as they explore Christianity for themselves. We provide activities for all ages, led by our Children's Work Co-ordinator Pat Hall and enthusiastic, caring volunteers. As well as the weekly activities below, we hold an Easter Holiday Club, recent themes being Epic Explorers - meeting Jesus through Mark's Gospel, Man Overboard - Jonah & the Big Fish, and To Infinity & Beyond - the story of the Bible in just 5 days!

First Steps

A weekly baby and toddler group, running Monday afternoons at Mottram Community Centre. This provides a relaxed opportunity for parents and carers to be together as the little ones enjoy games, crafts, a Bible story, and some singing.

Crèche

For babies and pre-school children in the Choir Vestry, during our 10.30am service. Parents can stay with their children as they play, while listening to the service on loudspeaker.

Sunday School

For children aged 4 to 11 during the 10.30am service; apart from the first Sunday of the month. However, children can happily stay with their family in church throughout any of our services.

The children meet in church first when the whole church worships together, then go across to Mottram School, where they enjoy Bible stories, games, drama, crafts and songs. Highlight of the year must be the Nativity with Colin the Donkey but they have also learned more about Jesus and his love for us all. The teachers have used various resources, but this term they are doing their own thing talking about the parables.

It is brilliant to see the children move on to Under Construction but for the first time in over 12 years numbers have dropped, and we have to try to find an answer to this, with His help.

Under Construction

For youngsters in school year 6 and upwards, meeting every Sunday evening during term time at the Magdalene Centre. They regularly enjoy eating cake, drinking hot chocolate, playing games, learning about Jesus and looking at different parts of the Bible. This is led by Alice Litaba and a team of leaders and helpers.

Around once a term the group has organised socials, and attend outside events bringing youth groups from across Tameside and Stockport together for joint worship. These have been very well attended by young people of varying ages allowing for the progression of friendships.

The group have made contributions to the services at St. Michael's by writing prayers, and many of the group have volunteered for Bible readings. During the annual Thy Kingdom Come programme in 2018, the group led a prayer event at St. Michael's, in which there were several prayer stations themed on forgiveness, thankfulness and quiet reflection. At Christmas time, decorations are made for the congregation to place on the Giving Tree, supporting a charity chosen by the young people.

On the whole, the unity of the group has matured and been rewarding to both the youth and the leaders and helpers involved. This has meant that a safe, secure environment has been developed where everybody can take part and contribute as much or as little as they wish. The relationship of the group goes beyond the weekly meeting as their friendships have grown both at home and at school.

Meet the team

Parish Church Council and Parish Reps

The council comprises thirteen members. Our Churchwardens are David Russell and Dejan Melovic. David Russell, and Chris Kershaw (not on the PCC) are our Parish Reps during the vacancy.

Readers

We have two Readers, both of whom now hold Emeritus status. John Walker is currently unavailable due to illness. Allen Standeven is now our only lay reader, and intends to retire at the end of the vacancy. In the meantime, Allen takes a leading role in worship and worship planning, and is our prayer coordinator.

Hatches, Matches and Despatches

Our three Occasional Offices Co-ordinators are the first point of contact for families wanting to book baptisms, couples wishing to get married and for funeral directors or families wishing to arrange funerals. Last year, we carried out 14 baptisms, 8 weddings and 29 funerals.

Our Co-ordinators are Cathy Laycock for baptisms, Margaret Taylor for banns and weddings, and Kate Best (during the vacancy only) for funerals. We are currently in the process of centralising our record keeping from a mix of personally-held Word and Excel files, using the on-line Life Events Diary from iKnow Church.

Pastoral team

If we think of the Church as a family, then we understand it's our job to look after one another, and there have always been members of the congregation who regularly visit, shop and give lifts. Our Pastoral team Chris Kershaw, Kath Higgins and Christine Brandreth, visit the sick, bereaved and housebound at home and in hospital. This is not limited to members of the congregation. They regularly take home communion to the housebound as requested. They act as point of contact for congregation members to liaise with, to advise of those who might benefit from or appreciate a visit, or who have not been in church recently. They try to ensure that no-one is forgotten.

David



Churchwarden
and Parish Rep

Dejan



Churchwarden

Chris



Parish Rep

Allen



Reader



Safeguarding



The people who work on behalf of our church are people of love and integrity, whose prime concern is in sharing the good news of Jesus through the work that they do. We do, however, need to make sure that no-one who seeks to hurt others is allowed to work with vulnerable people in our congregation and to that end our Safeguarding Coordinator, Claire Bibby, ensures that not only are our leaders individually DBS checked but that they are made aware of the signs when someone is being hurt and what to do about this if they have concerns. Our church undertakes:

- to prevent abuse and report any which is discovered or suspected;
- to protect those who work with vulnerable people and to support them in doing that safely;
- to promote the growth of all within the love and nurture of the church community.

Details of all our safeguarding policies can be found on our website.

Communications

We use a variety of ways to keep in touch with the congregation and others beyond the church walls:

- Weekly church notice sheet prepared by Parish Administrator Juliet Edwards;
- Monthly Parish Magazine, delivered to about 400 subscribers around the parish and also available on-line, produced by Polly Brown and the team;
- Website, kept up to date by webmaster Tony Kershaw, along with the parish email system and all things tech;
- A selection of GDPR compliant email mailing lists, using Mailchimp - covering church notices, social events and more;
- Facebook and Twitter - regular posts by Rachel Rodgers and Georgia Cambridge.



Paid staff

The post of **Parish Development Worker** was held by Ruth Montgomery. This was funded by income from our vicar's one-day-a-week teaching work at St Mellitus Theological College. The uncertainty around continuing funding for the post was the main reason that Ruth found it necessary to resign from the post, which has now been terminated.

Juliet Edwards is our **Parish Administrator**, working 8 hours per week, alongside her day job. Her responsibilities include the weekly notice sheet, payroll and fees reporting, dealing with enquiries, collating data for the annual return, printing service sheets and other materials. A large part of her job is that of **Magdalene Centre Manager**, dealing with regular users, ad hoc bookings, ordering supplies and being line manager for the caretaker.

Alan Anderson is **Magdalene Centre Caretaker**, employed for 6 hours per week, and responsible for cleaning, routine safety checks and minor repairs. He works with our Maintenance Team leader in major DIY maintenance jobs, and acts as keyholder and named contact for emergencies.

Two **Vergers** are employed to assist the vicar or other ministers at funerals and weddings.

Prayer and Bible study

Prayer ministry

On the 2nd Sunday of the month, during the Holy Communion Service we offer an opportunity for personal **prayers for healing** in the side-chapel, led by two congregation members, rota'd from four people.

Our **prayer co-ordinator**, Allen Standeven, is contactable at any time by email, or during the daytime by phone. Requests can be made for him to pray with an individual, or for prayers to be shared with our prayer groups, or a more public request made by posting a prayer request on the church prayer board.

Our **prayer board** is displayed in church. Anyone can write and post a prayer request for any situation. The prayer requests are often included in our weekly intercessions during Sunday services, taken to other prayer groups within the church family or used by members of the congregation in their personal prayers.

Our weekly notice sheet includes a **prayer diary**, encouraging members to include a certain topic in their personal prayers. This may reflect the seasons (e.g. harvest, Christmas etc.), a particular project (e.g. Christian Aid, Compassion UK) or a particular need (e.g. Parish Vacancy).

There are currently two **prayer groups**:

A group led by reader Allen Standeven meets weekly in church, focussing on the church and its ministry - this group attracts only one or two, which is reflected also in other church-wide prayer activities such as Thy Kingdom Come, which this year was largely unsupported.

A monthly group has been held in the home of Betty Gadd for over 15 years, with a wider remit including personal, parish and national issues. The group has a faithful regular attendance of four or five, and is publicised on Facebook, which prompts occasional confidential prayer requests via Messenger.

Home groups

The congregation has a poor history of support for home groups. This area is an example of the challenge the church faces in involving the congregation as members of the church family, in activities outside of Sunday worship.

In the last few years, a new monthly initiative - **Bible Book Club** - was started, in which groups read one book (or a part) from the Bible, then came together to discuss the book, often using Bible Society notes. Only one of these groups, led by reader Allen, still meets. It may be pertinent to note that three other successful groups were led by our other two readers (one is now ill, and the other is now ordained to another parish) and by our curate (now in his own parish).

Mustard Seed is a group of about six (female, but not compulsory) members, who first met together as a young parents in the 90's, and now still meet regularly, following such resources as The Upper Room.

The Vicar used to run a **Growing Discipleship** course on a Sunday evening once a month for newly confirmed adult members. Other than that discipleship is included in our preaching and teaching, but future courses were being discussed between Vicar and Reader prior to the vacancy.

The church in the community

Social activities

As individuals or families we all like to have a social life. This is also true for our church family and we hold a variety of social events. Some of these also double as fund-raisers, but it's always good to meet just to get together. Here's a flavour of what we've been getting up to over the past few years:

Fortnightly walking group
Afternoon tea
Barn dance
Parish picnic
Organ recital
Harvest suppers
Church family weekend away
Monthly pub night
Salsa night



Car treasure hunt
Parish lunch
Evenings of poetry and music
Quiz nights
Tea dance
Meals out
Brass band, organ and choir concerts
Advent dinner
Bring and share harvest lunch

Fundraising

Fundraising has a dual purpose of course - not only does it help us to balance the books, it often engages us with the wider community beyond the congregation, and can be great fun too:

Fundraising activities

Successful and popular events have included:

Sponsored walks

Abseils down the church tower

Parachuting teddies!

Sponsored bike rides

Spring/
Summer/
Autumn/
Christmas Fairs

Flying the flag



Giving Campaigns

From time to time, it is necessary for the church family to dig deep into their own pockets, to support the mission of the church.

A notable example was the Pledge Sunday we held in 2009 to raise money to complete our plans for the transformation of St. Mary's Church into The Magdalene Centre.



Then again, earlier this year, faced with a very difficult financial position, a Giving Campaign was organised, which in addition to fundraising activities, made a big impact on this year's finances.

Community outreach - mission

At St Michael's we believe the church has a vital role to play in the community. We aim to deepen our discipleship by equipping and enabling the whole church family, so that each of us can live out the gospel in our everyday lives and in our community. We recognise the importance and value of going out into the community and meeting people where they are and, with God's hand on us, we have seen real fruitfulness in our outreach ministry over recent years.

Thanksgivings and Baptisms

Re-thinking and developing our Baptism process to include an initial Thanksgiving service followed by a Baptism Preparation Evening with other families, has resulted in closer and stronger relationships with new families. We have re-started our Sunday morning Crèche in church and also launched our weekly First Steps Baby & Toddler group. First Steps offers the opportunity to foster links and relationships with families who don't come to church and to share God's word in our little story-telling and craft sessions. We're looking forward to inviting our First Steps toddlers to join in with our church Nativity play this year!



Open the Book



Open the Book offers primary school children an opportunity to hear key Bible stories, from a team of Christians from the local church, who present the stories during assemblies, using costumes and props. We've had lots of fun exploring the Bible in exciting and creative ways!

Our OtB team delivers fortnightly assemblies to our two church schools and Arundale Primary. The assembly at Arundale is followed by a lunchtime craft club. The team runs a week-long children's Holiday Club during the Easter school holidays. In July 2018, they were privileged to lead a whole school RE Day at Broadbottom and Mottram schools. With an enhanced church team, in collaboration with school staff, this was a truly special day and a God-given opportunity to share the Gospel in a meaningful way with over 200 children.

Bible Encounter Trust

The aim of the Trust is to "bring The Bible alive in a dynamic and relevant way" for both children and adults. Their events, usually about 10 days long involve the use of very imaginative and extensive scenery and hard work to transform the church into either the streets of Jerusalem or the streets of Bethlehem as appropriate, and several times each day participants are walked through the streets whilst Peter Fraser from the Trust tells the story.

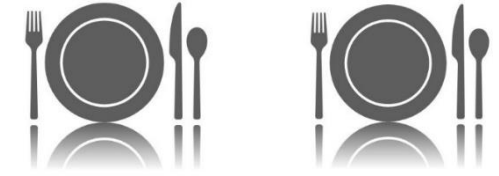
These events have proved very popular, the sessions being attended by all three schools in the parish and also from a neighbouring parish, resulting in over 900 children visiting and listening to the Bible story at their latest visit.



Community outreach - offering a helping hand

St Michael's Meals & Wheels

This offers home cooked frozen meals to those experiencing challenging times in their life and provides lifts to those having difficulty with transport. This has enabled us to serve a real and practical need, reaching out in the Lord's love to our community - to those who may be struggling with ill health, bereavement, caring responsibilities or suffering relationship breakdown.



Support to local charities



We have a permanent donation box in church to support the local **Foodbank**, part of the Trussell Trust network and based at Hattersley Baptist Church. A number of our congregation volunteer at the Foodbank Distribution Centre and at supermarket collections, and our church representative is a Foodbank Trustee.

We support **the Spotlight Outreach** Charity by donating the surplus freezer meals from our Meals and Wheels service, which are warmed up and distributed to the homeless community in Tameside and Manchester. We have recently made a substantial donation of much needed socks, talc and blankets to Spotlight.



Each year, our harvest festival collection of food and toiletries is taken to **The Carpenter's**

Arms, a drop-in centre for the lonely or homeless, operated by Charlestown United Reformed Church in Ashton under Lyne.

Our churchwardens are trustees of the historic **Mottram Parish Charities**, who have given much financial support to the Foodbank, Spotlight and many individuals and organisations locally.

Working with the elderly

In partnership with Hope Community Church, we provide a monthly, informal Sunday afternoon service at **Balmoral Care Home** and deliver a monthly Bible study session to the residents at **William Ford Sheltered Housing**, using Pilgrims' Friend resources. Recently, we have been blessed with the opportunity of forging new links and building relationships with residents at **Chambers Court Sheltered Housing**, Hattersley, joining them weekly at their coffee mornings.

In response to the current epidemic of loneliness and isolation in our society, we've run a **Holiday@Home summer club** over the last two years in partnership with St. Barnabas Hattersley. This event, including fun and fellowship and a trip to the seaside for senior citizens has been blessed to welcome over 40 guests each year, based at the St. Barnabas Meeting Point. The success of our inaugural summer club led to the launch of our monthly **Holiday@Home lunches** and coffee mornings.



Afternoon Tea



This regular informal event at the Magdalene Centre is open to all, and is especially aimed at the lonely or elderly. We serve freshly made sandwiches, homemade cakes and scones, accompanied by gallons of tea and coffee and there is often a guest speaker. It's aim is to show that the love of God is meant not only for those who attend church but for everyone. Those who attend regularly are usually members of our own congregation - sometimes accompanied by friends or neighbours, and the occasional newcomer. All are made welcome, but our original hope that this would attract newcomers from the community beyond the church, has not been satisfied.

Regular charitable support

The church supports a range of charities with regular financial donations, including Christian Relief Uganda: Tanzania Trust, Compassion UK, Life Centre Hattersley, Hattersley Foodbank and the Bible Encounter Trust. £4,500 per annum is given from the PCC's regular income.

Operation Christmas Child is a project of Samaritan's Purse, an international relief organisation, delivering gift-filled shoeboxes to over 168 million children in more than 100 countries. This appeal has become an annual event at Mottram Church. It is a way adults and children show God's love for these very disadvantaged children. The church generally sends between 25 and 30 shoe boxes each year.



Magdalene Centre groups

You will learn more about our own use of the centre elsewhere in this profile. Much of the time, however, the centre is booked solidly by local community groups and individuals, including:

Scouts, Cubs and Beavers

Hope Youth Theatre

Circuit Training and Kickboxing

Pilates and Dance classes

Parties, concerts and charity events

School and PTA events

Appleton Childcare
Before and After School Clubs



The church in its wider context

Mottram Deanery in Chester Diocese

The Diocese of Chester is the Church of England primarily in Cheshire – but also covers some areas outside the county. The diocese itself is in a similar position to the parish - Bishop Peter retired very recently, and earlier this year our Suffragan Bishop Libby Lane moved to be Bishop of Derby.

Mottram Deanery is the easternmost outpost of the diocese, situated some 50 miles from Chester. Although Mottram was once regarded as ‘the Deanery church’ (the ancient parish boundary encompassed most of the modern Deanery), the post of Rural Dean is no longer automatically held by the vicar of Mottram, and is currently held by the vicar of nearby Holy Trinity, Gee Cross.

The PCC has only one Deanery representative at present.

Training for ordinands

We have been fortunate to be considered a good training placement for a number of ordinands over the past decade, and enjoyed having a curate - Rev Dr Andrew Knight - between 2015 and 2017. We narrowly missed having another curate in 2018, when a potential new curate had to withdraw, due to a change in personal circumstances not connected with Mottram Parish.

Links with other local churches

Hattersley Gospel Partnership

We are part of the Hattersley Gospel Partnership, an informal association with the local Baptist Church, Evangelical Church and the Hattersley Community Church (these last two now merged as Hope Community Church). This was set up in 2016, when we all joined together in the Real Lives Mission - a week-long witness led by Roger Carswell, held in a marquee on the car park at Hattersley Hub. During the daytime, sessions were attended by all the pupils from our local schools, there were lunchtime sessions and each evening a time of worship and witness, where invited guest speakers told of how Jesus had changed their lives. In preparation for that, our ministry team joined with our partner churches in door to door visiting in the area.

St Barnabas Church and Hope Community Church

One of the many blessings of Holiday@Home has been the collaboration with St Barnabas Church, Hattersley. Another important strand of our work with the elderly has been working with Hope Community Church, previously known as Mottram Evangelical Church, in local care homes and sheltered housing.

This partnering with local churches is opening up exciting missional possibilities, with opportunities to extend the reach of our ministries, serving and connecting with a broader cross-section of our community and enabling us to serve in our core calling as a church - to be a disciple-making community.

The church buildings

Vicarage and 'Curatage'

You will have read about the vicarage, earlier in this profile. We also own a small, two bedroomed terraced property in Broadbottom, bought with restricted funds for the use of a curate. This is at present being rented out on short term lease to private tenants.

The Parish Church of St. Michael & All Angels

The present church, a Grade II* listed building, was built in the late 15th century, following a bequest from Sir Edmund Shaa, who lived locally but rose to fame and fortune as the Lord Mayor of London. Shaa died in 1488 and left money for the building of the tower, also St. James Chapel near Tintwistle, and the founding of Stockport Grammar School. It is possible that the whole church was rebuilt at the same time, perhaps as an enlargement of an earlier building. There is documentary evidence of that earlier church, dated 1291, in the Papal taxation records of the time.

Some key features are:

- The Tower houses a peel of 8 bells and the village clock, and is on the At Risk Register;
- Two side chapels in the building: the Staveleigh Chapel and the Hollingworth Chapel;
- Life-size Derbyshire stone effigies of Sir Ralph and Lady Elizabeth de Staveleigh who predate the present building - c1420 - (subjects of the legend of Sir Ro and Lady Elizabeth);
- 12th century stone 'barrel' font, the oldest item of furniture in the church;
- A finely carved alabaster pulpit in memory of architect E. H. Shellard
- The Mottram village war memorial is located inside the church.



In 1855 the church had a major restoration, by local architect E. H. Shellard. The nave roof was raised, and the rather small clerestory windows replaced by the handsome ones we see today. Apart from that fine Victorian restoration, the structure and layout of the church remains much as it was when it was built 500 years ago. Each generation has left its mark, however, and this generation is no different. See our Big Plan, below.

A copy of the Guide Book, and our most recent Statement of Significance (much detail about the church and churchyard) are available on request.

Our Big Plan for St. Michael's

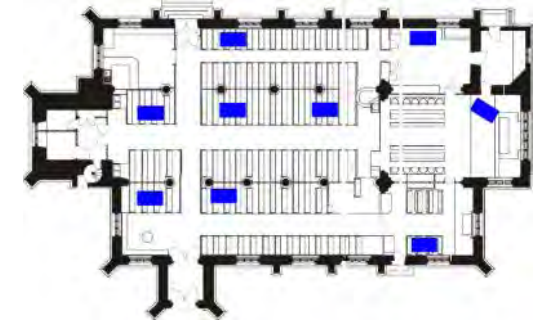
This includes major repair work to the tower and bell frame, and a re-ordering scheme phased over three years. The plan, costing at around three quarters of a million pounds has been developed over a number of years, has the approval of the PCC, and the support of Chester DAC and Historic England, also - with some reservations - by the Victorian Society. A number of consultations with the congregation and members of the community have found people largely supportive, with some concerns that we intend to address as the plans are developed in more detail, once funding is available.

Cherish
the past
Embrace
the future

An outline of the changes and their historical precedents, are described well in the exhibition displays for our 2018 Heritage Open Days weekend, which can be seen on the parish website at www.mottramparish.org.uk/heritage/bigplan/

Repairs

We need to investigate the causes of rain penetration through the stonework at the top of our tower, then fix it. Also in the tower, we have a 120 year old steel bell frame which got very wet during the first half of the 20th century. We're only just now discovering how rusty the frame is. We've had some emergency work done, but it needs a complete rebuild.



Access

We must improve access to the church for disabled and elderly people and young families. This will make our church more inclusive. We will achieve this by making a new path across the churchyard in permeable resin-bound stone chippings, to replace the present uneven stone path.

Welcome and heritage

We will make our church more welcoming and accessible to all, by improving the entrance and social areas, and by replacing the heating and lighting systems. We will improve access to the building's heritage by moving the stone effigies to a better position, and by researching and renovating the 18th century painted boards over the chancel arch.



Worship and prayer

We want to make sure our church remains a superlative place of worship, now and into the future, by making the chancel area larger and more flexible, to better accommodate different styles of worship, and to improve the way we use it for small services, prayer groups, concerts and school events.

Grant applications

The PCC have discussed the ethical implications of funding from the National Lottery, and have agreed that this would be appropriate for the repair and improvement of the building. A small team is now working towards applying for grants. So far, an application has been made to the Headley Trust, and we are working towards applying to the National Lottery Heritage Fund, the National Churches Trust and other funders in due course.

The Churchyard

In the churchyard are the Old Hearse House and the old Mottram Grammar School (now a private dwelling).

This would once have looked very different, being a small area bordering the church, with its headstones standing in serried ranks. In 1818 the churchwardens gave notice to all who had headstones in the churchyard to agree to have them laid flat. The churchyard was closed to new burials in 1861. Burials now take place in the local municipal cemetery run by Tameside MBC, which is located beyond the churchyard.

A Memorial Garden for the burial of ashes was consecrated in 1987. It was conceived, designed and is maintained, as a natural area, with vases, stones and other ornaments not allowed. Those who have lived in the parish or who have been a member of the congregation, have an automatic right for their ashes to be buried in the garden. Others who have a significant link to the parish can be interred here at the sole discretion of the vicar.

The Magdalene Centre

In the late 1870s, local landowners Colonel William Sidebottom and Edward Chapman, together with the vicar of Mottram, Canon Miller, raised funds so that Broadbottom could have a church of its own. The new church of St. Mary Magdalene was finished in 1890. Until the 1990s, Mottram's curates were given charge of St. Mary's.

When regular Sunday worship at Broadbottom was ceased, due to falling numbers, the PCC made a commitment to look for ways in which the church building there could be made more welcoming and useful to members of the local community.

By complete coincidence (or was it a God-incidence?), we were soon approached by Tameside MBC, with a plan to bring a Sure Start Children's Centre to the village by developing the back third of the building to house that centre.

Soon afterwards, we raised the funds to redevelop the rest of the building (Hall and Chancel). Work started in 2008 and by 2010 we had the 'The Magdalene Centre', our new parish hall, worship space and community resource. The Children's Centre room (no longer used by Sure Start) is now named The Chapman Room in memory of Edward.

We currently use the Hall and Chancel for our 'Under Construction' youth group, and for worship events that require greater flexibility of layout than St. Michael's - for instance our Big Christmas Sing, Open the Book (school assemblies and church services), and Taizé services. Our children's' holiday club is also based there. Much of the time, the centre is booked solidly by local community groups and individuals, as described earlier in this profile.

Until recently the Chapman Room was home to a class from Broadbottom Primary School. However, due to funding difficulties, leading to a reduction in the number of classes, that arrangement ended in July 2019. Appleton Childcare are now using this room, as well as the Hall, for their Before and After School Club.



Looking after our church buildings and grounds



Our buildings and churchyard require a lot of routine maintenance to keep them in good repair, as well as simply keeping them clean and tidy. Keeping on top of this has become problematic in recent years, and is now a real cause for concern.

St. Michael's

is a medieval building, so any work needs to be done in a way that respects its grade II* listed status - from DIY jobs done with due regard to conservation principles, to major repairs carried out by qualified professionals. All this needs to be led by someone who understands the building and its issues - and it is difficult to attract members of the congregation to be involved in this.

Routine DIY maintenance is now left to the maintenance team leader Tony Kershaw, with no more than three or four others to call on. He is also responsible for booking and recording professional regular maintenance such as boiler servicing and fire extinguisher testing etc, and for liaising with the parish architect or outside contractors for **major professional repairs**.

Regular weekly cleaning sessions are carried out by our affectionately named Holy Dusters led by Jacky Smith. There are three regular cleaners plus two occasional helpers - sometimes however, there are fewer. For much of the 2019 summer holidays, Jacky was the only person who was able to attend when her full time day job allowed, and limited to the amount of work she was able to carry out.

The Flower Ladies meet weekly, arranging flowers on the altar and/or other displays. Extra displays are provided at Christmas, Easter and Harvest. Sometimes they are asked to decorate for weddings and funerals. People can sign up to donate money on a particular date, usually for a special occasion.



Churchyard and Memorial Garden

suffer from a marked lack of involvement from congregation members. We have been very lucky to recruit two volunteers, a church member and her husband, both in their late 60s, to cut the grass in the churchyard, after the funding crisis that led to our reducing our contract with a local gardening firm, to mowing the memorial garden grass only. A garden working party, which once boasted six or more regular members each month, is now down to one person and hence work in this area of the churchyard is limited.

Magdalene Centre

is in a somewhat better position for cleaning and maintenance, as caretaker Alan Anderson regularly cleans the building and carries out minor repairs, and routine health & safety checks. He and Tony Kershaw carry out jobs such as high level light bulb replacements, more demanding maintenance tasks and decorating. Tony organises any major professional work and regular servicing for the fire extinguishers, fire alarm, boilers etc., but the caretaker is available to give access to contractors. The churchyard there currently receives no gardening attention apart from a yearly hedge cut from the same firm that cuts the Memorial Garden grass.

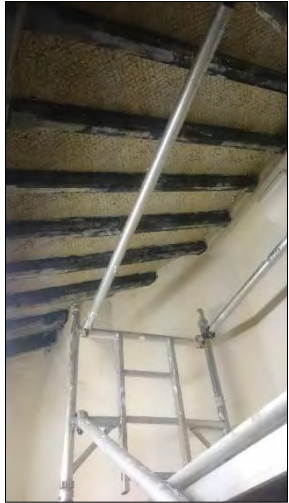


The Friends of Mottram Parish Church

The Friends was formed over 20 years ago as a means for all people who have affection for our beautiful mediaeval building, to support and contribute towards its upkeep. The Church building is part of our historical heritage here in Mottram, having stood on the hill in some form for over 500 years. We hope to help ensure it stays there for another 500.



The Friends has two objects:



- 1 To raise and provide funds for special repairs, maintenance and improvements to the fabric and furnishings of the church building, in order to enhance the worship environment for the congregation and preserve its heritage value for all;
- 2 To engage those who are not currently part of the church's worshipping community and to encourage them in their support for the church and its activities.

Membership currently stands at 164 and is made up of annual members who pay £10 per year, and life members who pay a one off payment of £100. There is an elected committee of five, and applicants will be pleased to know that the incumbent is the President of the Friends!

We organise three main events each year - a Spring Concert, Summer Garden Party, and the Heritage Open Days weekend. We have been pleased to be able to fund a large number of essential repairs and improvements to the building, having contributed in the region of £50,000 over the years. Recently money was given for projects as diverse as the repair of an unsafe memorial on the south wall of the church; the re-roofing, re-plastering and repainting of the clergy vestry; and a new door mat for the front porch!



Heritage Open Days



Every September during Heritage Open Days Weekend, some 40,000 volunteers across England organise 5,000 events to celebrate our fantastic history, architecture and culture, all of which are FREE to explore.

The Parish Church has been open for visitors during Heritage Open Days weekend, for just over ten years now - more recently, being organised by the Friends. Each year we feature tours, music, tea & cakes, and an exhibition, on themes such as The Big White Dress Show (wedding dresses), a Flower Festival, a Festival of Crosses, and this year, The Picture Show - a display and sale of paintings by two local artists.



The Bells... the bells....

St Michael's Church has a fine set of eight bells cast by Taylors in 1910. The Ringing Team meets to practice together on Wednesday evenings, and on Sunday morning they ring in worshipers for the 10.30 church service and for other occasions such as weddings. Peals are rung on other occasions, for example for the Queen's Diamond Jubilee in 2012.

As mentioned earlier in this profile, the bell frame is now in need of a very expensive, complete rebuild.

Finance

Notes on the 2018 Accounts (available separately)

The deficit was £8,859 compared with the surplus of the previous two years and occurred for a number of reasons including:

- The income from St Mellitus (a theological college where Rev James taught on Mondays) was used for general purposes in 2017 but this was intended to cover the cost of the Parish Development Worker. Once Ruth was in post, this income was not available for general purposes;
- There was no significant fund-raising event in 2018;
- The level of direct giving by the congregation had not increased sufficiently to cover the shortfall;
- Costs have, inevitably, increased.

Income

Income from Previous Years Written Off: this resolved a number of transactions from previous years that had been on the balance sheet for some time (£9,099). This enabled a much more accurate outturn for 2018 to be reported and does not affect the deficit.

Goodwill Donations: the increase compared with 2017 was due to the donation made by The Friends of Mottram Parish Church for the Vestry repairs.

Other items: largely a refund of VAT from the Listed Places of Worship Scheme (£6,293). Part of this was returned to The Friends of MPC (in respect of Vestry repairs which the Friends paid for and is reflected under Expenditure: Other items).

Expenditure

Maintenance: the increase compared with 2017 was due to repairs to the Vestry.

Staff costs: the increase compared with 2017 was due to the Parish Development Worker being in post for the full year as opposed to part year in 2017.

September 2019 update

To address the difficult financial position the PCC agreed to:

- a number of cost saving measures, including a drastic reduction in paid grounds maintenance;
- a Giving Campaign, with regular givers asked to review their level of regular giving, new givers encouraged to join the planned giving scheme and everyone asked to consider making a one-off donation;

The response has been excellent. To boost our finances further a sponsored event - The Big Walk along the Sandstone Trail - raised over £4,000. We anticipate that our finances will come back into balance in 2019.