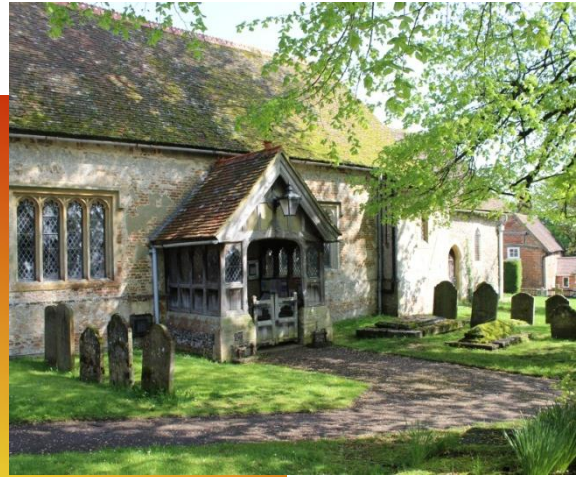


THE WHITEWATER BENEFICE
*The Parishes of Hook and Heckfield
with Mattingley and Rotherwick
in the Deanery of Odiham and the Diocese of Winchester*



BENEFICE PROFILE
FOR THE APPOINTMENT OF A PRIEST IN CHARGE

A Message from the Bishop of Winchester

The Rt Revd Tim Dakin

[“Living the Mission of Jesus”](#)

As a Diocese we are committed to rooting ourselves in **Living the Mission of Jesus**. We have begun a strategic process to deliver a mission-shaped Diocese, so that parochial, pastoral and new forms of pioneering and radical ministry will be infused with the life of the Spirit of mission. It’s a life lived out in three dimensions:

Passionate personal spirituality;

Pioneering faith communities;

Prophetic global citizens.

The Diocese of Winchester is an exciting place to be at the moment. We wait with eager anticipation to see how this process will unfold. We pray that, if God is calling you to join us in his mission in this part of the world, he will make his will abundantly clear to you.

“As the Father sent me so I send you ... Receive the Spirit” (John 20:21)



A Message from the Archdeacon of Winchester

The Ven Michael Harley

[“We are being challenged by the spirit of God”](#)

The Whitewater Benefice was created in 2008 to bring together the parish of Heckfield with Mattingley and Rotherwick and the parish of Hook.

This year the Deanery of Odiham (in common with all of our deaneries) will create a deanery map through Mission Action Planning (MAP), giving us a clearer shape of the deanery for mission. In 2015 each parish and benefice will be expected to create its own MAP. It is possible that these exercises will lead to some re-drawing of benefice boundaries; for this reason the ‘living’ in this Benefice is currently ‘suspended’, and a Priest in Charge will be appointed for the time being.

We believe that we are living in exciting times as a diocese and sense that we are being challenged by the Spirit of God. We are therefore looking for a priest who will come and join the Benefice, but also the Deanery and the Diocese. This is an exciting and challenging post with many creative possibilities.



CONTENTS

Role Description.....	Page 4
Welcome to the Whitewater Benefice.....	Page 9
The Ministry Team.....	Page 11
Administration, Communication and Accommodation.....	Page 12
The Worship Timetable.....	Page 13
Benefice Finances.....	Page 14
MORE INFORMATION	
Appendix 1 Church Activities.....	Page 16
Appendix 2 Finances.....	Page 17
Appendix 3 About the Benefice.....	Page 18
Hook	Page 18
Heckfield.....	Page 19
Mattingley.....	Page 19
Rotherwick	Page 20
Hart District.....	Page 21
Appendix 4 Education.....	Page 22
Appendix 5 The Rectory.....	Page 23

ROLE DESCRIPTION

The Whitewater Benefice is seeking to appoint a Priest in Charge who will share our vision for our Churches and our Benefice.

The vision and skills needed for the way forward are wide ranging and challenging:

To provide strong, collaborative and sensitive leadership.

To embrace all our different Churches in a shared faith.

To encourage growth through living the mission of Jesus.

To direct, trust, use and develop the passionate personal spirituality of every member of our churches.

To nurture a loving, active, and fully inclusive Benefice.

To be committed to the Diocese's Strategic Priorities and to ensure the Benefice plays its part in a mission-shaped Diocese.

Capabilities of a new incumbent

We would like our new incumbent to be able to:

Lead the Benefice effectively in the pursuit of its vision.

Communicate with and minister to a wide range of people using different media.

Draw on his/her experience of running a successful and diverse parish.

Embrace and deliver a varied pattern of worship.

Understand the different needs of the people of the Churches within the Benefice.

Get the very best out of our resources to develop us as communities of faith.

Make the most of and enhance our relationships with other local groups, the Deanery and the wider Church.

Short Term Objectives

Establish and promote our shared values and vision

By encouraging us to speak and act as one when linking with other organisations such as schools and the wider community.

By ensuring the Benefice acts and coordinates its actions with a common purpose and God's love behind all we do.

By promoting and valuing the benefits of a united Benefice.

Develop and grow our current activities

By evaluating what we do now, making sure our different activities are linked and the connections between them are strengthened.

By promoting what we do as attractive and interesting to all parts of the community including youth and children.

By meeting the aspirations and needs of parishioners.

Offer leadership

By starting to provide a strategy for the development of the Benefice.

By developing communication and delegation within and beyond the Benefice Team and congregations.

By promoting a single vision for the Benefice.

By developing an effective management framework based on interaction, inter-dependence and teamwork.

Move towards greater financial and organisational stability

By placing the Benefice on a firm financial foundation.

By developing our manpower resource.

By identifying and developing the core skills required to support activities.

By enabling more people to support the Church's work through effective delegation.

Medium Term Objectives

Build on the short term objectives and the foundation provided through them

To create a living church.

To promote ministries proactively among children, young people and those under 35.

To build a church community promoting prayer and worship in creative ways.

To use the full range of people, ordained or not, in our ministry.

To connect and engage with our local communities to develop our congregations.

To use people, buildings and resources wisely to invest in the future.

To adopt local good practice from other churches and parishes to enable the development of the Benefice.

To direct our finances into the mission of Jesus.



Stained glass at Rotherwick Church commemorating 300 years of Whitewater C of E Primary School.



East Window at St John's Hook in memory of Frank George Matthews, lost on HMS Cressy in the First World War.



Above: More tea, Vicar? Tea and scones at the Garden Party.



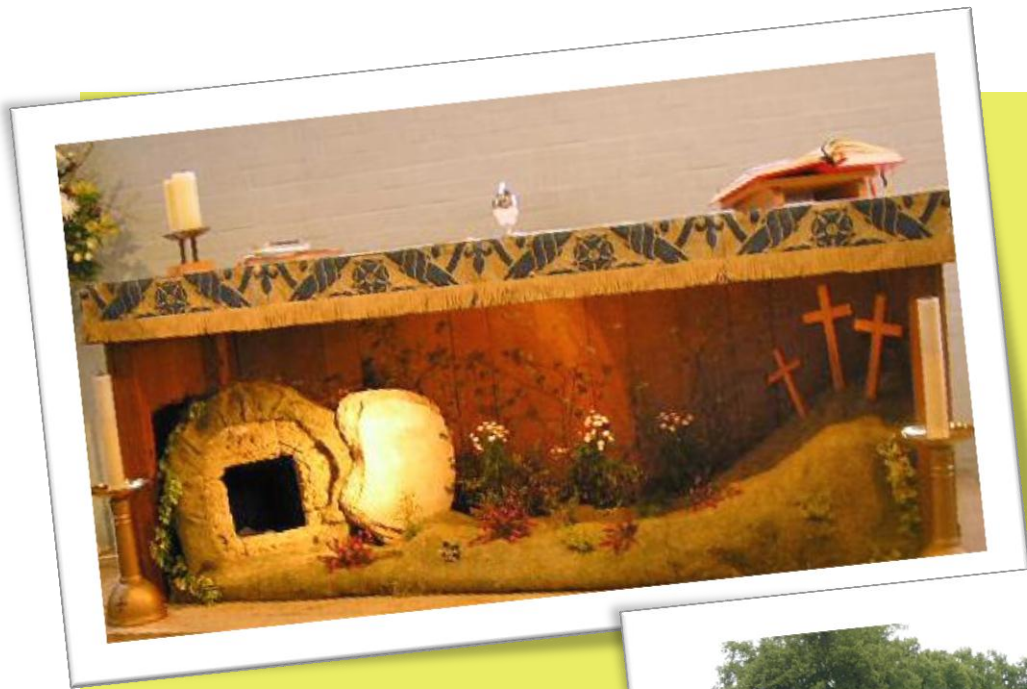
Left: The Lost Sheep – “Open the Book” at Whitewater School.



Right: Communion Service at Heckfield.



Left: The Hook Eagle Morris Men visit Rotherwick.



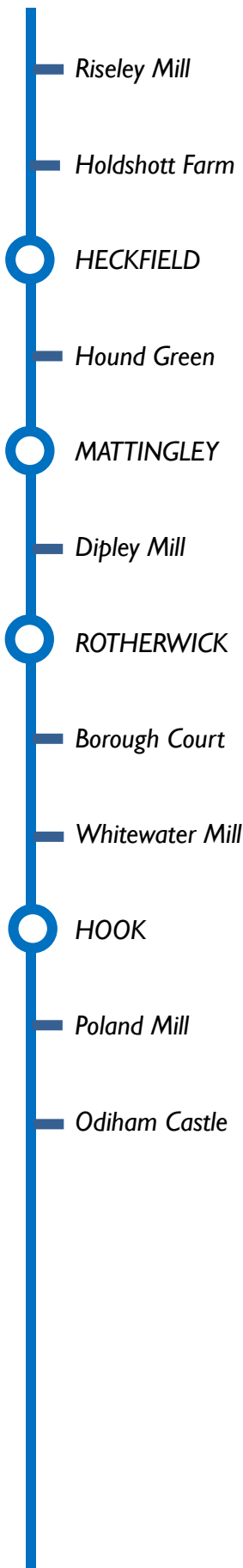
Above: An Easter Scene at St John's.

Right: The Parish Fete at Heckfield.

Below Left: A Special Visitor, Bishop James Min Dein from Sittwe, Burma with Readers Gordon Crowder and Jennie Martin.

Below Right: The Monthly Lunch Club at Hook.





WELCOME TO THE WHITEWATER BENEFICE

The Whitewater Benefice comprises the Anglican churches of St John the Evangelist in Hook, St Michael in Heckfield and the village churches in Mattingley and Rotherwick, four churches in the north-east corner of Hampshire, each with its own character and history – and yet:

"Jesus Christ is the same yesterday, today and forever."

The **WHITEWATER RIVER** connects the four churches in the Benefice, a **thin blue line** from Riseley Mill in the north to Odiham Castle in the south.

The Whitewater Valley is considered an **area of outstanding natural beauty**; an area of great importance for wildlife and plant life; an area of fascinating history.

The churches in this Benefice exist to **honour and worship God** by being open and inclusive and welcoming all people to question and discover for themselves the significance of Jesus Christ in their lives.

Three of our churches are open each day so that people have the opportunity to come into a Holy Place to say their prayers, or just to sit and be enfolded by the peace and spirituality of God's House.

They are not just pretty places or museums!



ONE BENEFICE, TWO PARISHES, FOUR CHURCHES

The Whitewater Benefice consists of the parish of Hook and the parish of Heckfield with Mattingley and Rotherwick (HMR). Each of the four villages has its own church. The Benefice is part of the Odiham Deanery and the Winchester Diocese.

Hart – the Best Place to Live!

The villages within the Benefice are administered by Hart District Council and Hampshire County Council as well as their own parish councils.

The Benefice is predominantly home-owning together with a percentage of retirement and sheltered accommodation. Some of the population work locally with a notable number commuting daily to London and elsewhere. Nearly one in ten of the people living in the Benefice are retired.

Hart has the distinction of being the best place to live in the UK according to three national surveys (see Appendix 3).

The Appendices contain further information about the villages and their churches (Appendix 3) and schools and colleges in the area (Appendix 4).



We're having fun! Above: The Hook Fun Run begins.
Right: Ducks outside Mattingley Church.



THE MINISTRY TEAM

Priest with Permission to Officiate

Peter Hewlett-Smith joined the Army in 1957 and is a graduate of the Army Staff College and the National Defence College. He retired from the Army in 1993 with the rank of Colonel when Deputy Provost Marshal (Army). Peter was ordained in 2006 and now has Permission to Officiate. He has been a continuous and devoted member of the Ministry Team since 2001. Peter is also Officiating Chaplain to the Military (OCM), based at the Guards Chapel in Wellington Barracks, and Honorary Chaplain to the Grenadier Guards and the Not Forgotten Association.



Readers

Gordon Crowder is Reader Emeritus. Gordon has lived in Hook and been on the staff at St John's since 1947. He has been a Lay Reader for more than 60 years! He has worked in many schools in North East Hampshire, retiring as deputy head of St. Peter's School in Yateley.



Jennifer Martin is an experienced Reader and transferred to Hook in 2003. Her current job role includes Reader Training Consultant for the Diocese of Winchester which involves quality assuring the Reader Training programme and second marking. She has been involved in children's work, lecturing and assessing Childcare, Health and Social Care in Colleges of Further and Higher Education. Jennifer sees faith and work as an integral part of ministry. She runs the ecumenical Bible Study at the Sacred Heart Church, Hook, and leads and prepares our All Age Worship services.



In addition to our team **Jonathan Bushman** is a trained Reader. He and his family are living in Cologne, Germany on a temporary assignment with work. However, he still has permission to officiate in the Benefice as a Reader. They are currently worshipping at the Markuskirche Methodist Church but are hoping to return to Hook in the future.

The Benefice has historically undertaken the **training of Ordinands, Deacons, Curates and Readers** and is open to this in the future. Jennifer Martin in the Ministry Team is involved in the training of Readers and assesses the portfolios of Curates in training.

ADMINISTRATION, COMMUNICATION and ACCOMMODATION

Benefice Administrator

Ruth Scott has been the Benefice Administrator since 2009. The Office is located in St John's Church Centre, Hook and is open every weekday from 9 am to 12 noon. Ruth is also the leader for our Messy Church worship each month.



Churchwardens

The Ministry Team and Administrator are supported by nine Churchwardens – Andrew Soundy (Emeritus); Rob Gray, Sally Montgomery (Heckfield); Avis Hall, John Platt (Rotherwick); Vivienne Alexander, David Salisbury (Mattingley), and Martin Rudd, Sue Steele (Hook).

Other Support Teams

There are four Deanery Synod representatives and four Sunday School teachers, a number of organists and an active choir.

In addition we have the support of our congregations to run Morning and Evening Prayer, Bible Study and Fellowship Groups, All Age Worship, Open the Book, Messy Church, Praise and Play, Coffee Shop and many annual events.

Last, but by no means least, are the many people who regularly clean our churches, decorate them with flowers and maintain the grounds in good order.

Communications

The Benefice maintains a website www.whitewaterchurches.co.uk and provides a weekly notice sheet (available through the website and at church services) setting out a service timetable and church activities.

A Benefice Magazine is distributed monthly to shops, households and other centres throughout the Benefice.

Accommodation

The successful candidate would have residence at the Rectory in Hook which is in the grounds of the Church.

For more details of the Rectory see Appendix 5.

THE WORSHIP TIMETABLE

A Typical Week

Sunday

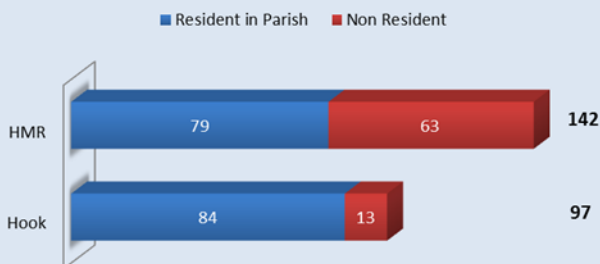
- 8.30am Holy Communion BCP (HMR)
- 10.00am Sung Eucharist (2nd and 4th Sunday)
or All Age Worship (1st Sunday)
or All Age Holy Communion (3rd Sunday) (Hook)
- 10.30am Parish Communion (HMR) or Sung Matins (Mattingley)
or Family Praise (2nd Sunday, Rotherwick)
- 6.30 pm Evensong (HMR)
- 7.00 pm Shine (Hook), monthly (3rd Sunday)

All three services in HMR (Heckfield, Mattingley, Rotherwick) are generally held at the same church, rotating each week, with the second Sunday always at Rotherwick

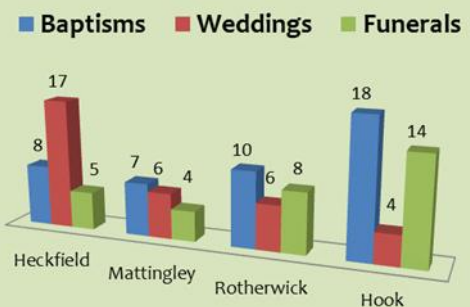
- Monday** 8.00 am Morning Prayer □ 5.30 pm Evening Prayer (Hook)
- Tuesday** 8.30 am Morning Prayer □ 5.30 pm Evening Prayer (Hook)
- Wednesday** 8.00 am Morning Prayer □ 10.00 am Holy Communion CW □
5.30 pm Evening Prayer (Hook)
- Thursday** 8.30 am Morning Prayer (Hook) □ 10.00 am Holy Communion
CW (Rotherwick) □ 5.30 pm Evening Prayer (Hook)
- Friday** 8.00 am Morning Prayer (Hook) □ 10.00 am Holy Communion
at Elderly Persons' Residence in Hook: Geffery's House (2nd
Friday), Old Raven House (4th Friday) □ 1.45 pm Praise and
Play (Rotherwick), monthly (2nd Friday) □ 3.30 pm Messy
Church (Hook), monthly (4th Friday) □ 5.30 pm Evening
Prayer (Hook)
- Saturday** 8.30 am Morning Prayer □ 5.30 pm Evening Prayer (Hook)

Services are conducted by members of the Ministry Team and by members of the Benefice. More information on church activities will be found in Appendix 1.

Parish Electoral Rolls 2013



THE WHITEWATER BENEFICE in 2013...



BENEFICE FINANCES

A Summary

The PCCs of both parishes acknowledge that there is work to be done to rebuild finances and provide a stable foundation for the future growth of the Benefice.

Hook

Parish income declined during the year resulting in a significant deficit position between Income and Expenditure. The decline in income is a reflection of the reduced numbers attending regular Sunday worship and the general economic conditions. These are unlikely to become more favourable during 2014 and will continue to have a significant impact on the level of reserves the Parish is able to maintain.

The deficit of income over expenditure amounted to £21,129 for 2013, compared with a deficit of £11,014 in 2012. As a result funds have decreased from £56,368 to £24,225 over the past two year period. In 2013 Parish Share of £44,775 was paid to Winchester, being a 13.4% decrease on the amount paid in the previous year.

The 2014 Parish Share is £35,000. Expenditure for 2014 has been reviewed and is budgeted to be reduced by £20,000 compared with 2013.

Heckfield with Mattingley and Rotherwick

Parish income exceeded expenditure in 2013 by £3,159, representing an improvement on the previous year's deficit of £15,406.

Regular Parish income increased by some 15% in 2013 if exceptional grants and donations of £33,806 in 2012 are ignored. This reflects the overall increase in collection moneys and other giving. Regular Gift Aid donations, however, showed a 6% decrease.

Funds have risen to £181,642 over the past year, but still show a decrease from £186,267 at the beginning of 2012.

In 2013 Parish Share of £52,507 was paid to Winchester representing a small increase over the previous year. The 2014 Parish Share is £46,000.

More details

For more details on Benefice finances see Appendix 2.



Left: Sing choirs of angels! The combined talents of Hook and HMR choirs.

Right: Verger Gwen Wheeler, Churchwardens Avis Hall and Vivienne Alexander and the Bishop of Winchester Tim Dakin.



Left: A rousing rendition of "The Twelve Days of Christmas" at the annual Carols in the Barn.

Right: The Coffee Shop at St John's, Hook -- a meeting place for people on a weekday morning.



Appendix I - CHURCH ACTIVITIES

Music

There is a team of talented organists who play across the Benefice: Richard Joyce, Rose Bell, Chris Chidley, Stephen Davies, Michael Steen and Paul Wren. There is also an established choir at St John's, Hook.

Social Events

The Benefice organises a number of social activities. Some of these events take place annually and others occasionally. The aspiration is to bring people closer together as a Church family and live out the mission of Jesus.

Past social events have included: Hook and HMR summer fairs, Hook Christmas Fair at the Hook Christmas Cracker, Ladies Pamper Evening, Quiz Night, Bowling and Supper, Burns' Night, Harvest Supper, Talent Show, Charity Lunches (for Rwanda and Burma), St John's Lunch Club, Passover and Seder, Confirmation BBQ Party, Sunday School Funday and Picnic, Bishop's Garden Party, Festival 2012 & 13 – with the Life Church, Hook, Lent Lunches, Spring Plant and Cake Sale, St John's Church 75th Anniversary Celebrations.

Discipleship and Study Programmes

There is a range of programmes to support the development of our faith. Information on these can be found in the 'News' area of the Benefice website. They include Youth and Children's Activity groups, Bible Study groups, Living Flame groups, Lent and Advent courses, Confirmation classes, Messy Church and Praise and Play.

Messy Church

Messy Church is a worldwide initiative for children aged up to 11 years. Children are invited to bring their parent, grandparent or carer to share in stories, Messy craft, songs, Messy worship, fun and friendship, followed by tea for everyone. Messy Church usually takes place at St John's on the fourth Friday each month, starting at 3.30 pm.

Sunday School

Children are always welcome at St John's Sunday School. Once a month there is a Family Praise service during which the children remain in Church. Also once a month there is an All Age Communion during which the children remain in Church, but on the other Sundays there is a Creche and Sunday School. The children may sometimes share what they have been doing with the congregation, and will display some of their artwork on a notice board in the Narthex.

Praise and Play

Praise and Play, which provides stories, craft, songs and fun for pre-school children and their parent/carer, is held in Rotherwick Church on the second Friday each month, 1.45 pm to 3 pm. Coffee is included.

Living Flame

Living Flame is a fellowship group that meets twice a month to give people an opportunity to share their faith and grow with others in their understanding of what it means to be a Christian in today's world. There are discussions on living the Christian life which normally follow material written by some well-known Christian authors.

There are two Living Flame Groups, which both meet in Hook: one meets on the 1st and 3rd Wednesday of each month, the other meets on the 2nd and 4th Thursday of each month. Each evening is a self-contained session so anyone is welcome at any of the meetings.

Shine

Shine is a relaxed and informal service where there is participation and active involvement.

Ecumenical Bible Study

The Ecumenical Bible Group meets each Tuesday from 2.30 pm to 4.00 pm at the Sacred Heart Church Hall, Hook. New people are very welcome to come along to learn, rediscover and enjoy God's word. Tea or coffee and cake are included!

Lunch Club

The Lunch Club meets on the second Tuesday of the month, at 12.00 pm in the Narthex for a two course a la carte menu. Much of the food is home made. The lunch costs £4.00 and there is a raffle at the end.

The Coffee Shop at St John's in Hook is a great way to meet new people, chat and gain a sense of life in the village. It is open for morning coffee, Monday to Friday between 10.00 am and 12 noon, and on Saturdays from 10.30 am to 12 noon.

Open the Book

Open the Book is a nationwide project dedicated to presenting Bible stories to primary school assemblies. Nearly 1,500 schools are involved in the project across the country.

Open the Book started in HMR Parish in 2010. Since then, the team has performed at Whitewater Primary School almost every Wednesday afternoon – over 100 performances. The team has also performed before Bishop Tim of Winchester and the Deanery Synod!

Appendix 2 - FINANCES

Where the money comes from and where it goes *The figures below are in summary form and reference should be made to the accounts published in the relevant Annual Reports.*

	HOOK 2013 £	HOOK 2012 £	HMR 2013 £	HMR 2012 £
INCOME				
Planned Giving	35,274	36,419	29,005	30,826
Collections	6,607	4,083	28,051	20,528
Donations, Legacies, Grants	1,439	6,525	17,982	45,052
Fundraising (net)	1,052	937	3,249	3,017
Investment Income	402	538	2,345	2,848
Church Lettings (net)	13,470	16,099	3,490	3,214
Fees (net)	2,846	2,208	10,328	7,836
Benefice Magazine (net)			4,855	5,378
Other Income	4,326	5,152		
TOTAL INCOME	65,416	71,961	99,305	118,699
EXPENDITURE				
Church & Missionary Giving	1,436	1,271	7,819	3,295
Parish Share	44,775	51,731	52,507	51,731
Ministry & Church Costs	31,533	24,234	24,902	68,613
Admin & Associated Costs	8,605	6,315	10,918	10,466
TOTAL EXPENDITURE	84,804	83,667	96,146	134,105
NET INCOME	-19,388	-11,706	3,159	-15,406
Gains on Investments	743	568	4,301	3,321
Funds at 1 January	45,230	56,368	174,182	186,267
Funds at 31 December	26,585	45,230	181,642	174,182
BALANCE SHEET				
Fixed Assets	13,274	14,030	41,058	36,757
Current Assets less Liabilities	13,311	31,200	140,584	137,425
Funds at 31 December	26,585	45,230	181,642	174,182

Appendix 3 - ABOUT THE BENEFICE

HOOK

The Village

Hook is situated on the A30, just north of junction 5 of the M3. It has a station on the main line to London Waterloo and bus links to Basingstoke and other surrounding towns and villages. However, most of the things needed for daily life can be found within the village. Whilst Hook is mainly a dormitory town, there is local employment provision, principally in the service industries and in the nearby business parks and industrial estates. The Bartley Wood Business Park in Hook includes Hewlett Packard and Virgin Media. However there is little correlation between those who work on the business park and those who live in Hook.

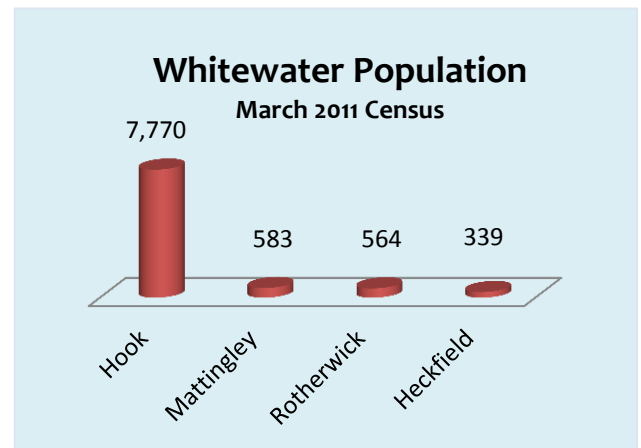
The Church

The **Church of St John the Evangelist**, situated in the centre of Hook on the A30, was consecrated in 1938. It was designed by Sir Edward Maufe, the architect of Guildford Cathedral. The interior is plain but effective, decorated with banners and Stations of the Cross. There are moveable chairs, which enable the orientation of the church to be changed for less formal services.



The stained glass east window, showing St John, is a memorial to Frank George Matthews, Royal Navy, lost on HMS Cressy in 1914.

A new Wyvern digital organ was installed in 2002 to replace the old pipe organ which was no longer viable. The latter has been left in situ however as a feature of the church.



The semi-circular **Lady Chapel** is used for mid-week services and is open during the day for private prayer. It incorporates a moveable altar that can be used for less formal services in the main church.

In 1992 a two storey **Extension** (the "Narthex") was added to the south side of the Church, providing a Lady Chapel, Benefice Office, kitchen, toilets (one with disabled access) and a number of meeting rooms. At the same time, a balcony was added at the west end of the church to provide more seating.

A church run **Coffee Shop** is open six mornings a week.

Church Hall

The **Church Hall** was built in 1974 adjacent to the Church and is in regular use by the Church, village groups and societies. It is home to St John's Pre-School during term time.

Rectory

The present **Rectory** was built in 1983 next to the Church (see Appendix 5 for more details).

Village Halls

Hook has two meeting halls. The **Elizabeth Hall**, opened in 2008, has one large hall with a stage, three smaller halls and a large car park. **Hook Community Centre**, opened in 1989, is situated next to Hartletts Park playing fields and is currently being refurbished but when open includes a sports hall, changing rooms, tennis courts, and other sporting facilities. It usually houses the Base Youth Centre and Hook Village Nursery. There is ample parking, which is also used by parents dropping off and picking up from school.

Events

Hook has three annual village events which are very popular and very well attended: the Hook Fun Run and Road Race (early May), Firework Display, Hook Christmas Cracker.

At the Fun Run and Road Race many people in the Village either run, or help by being marshals, manning water stations, selling refreshments and in numerous other ways. The races start and finish on the school site.

The firework display is run by Hook Schools Parent Association and also takes place on the school site.

Hook Christmas Cracker takes place one evening in early December. All the shops stay open late and there are lots of stalls and entertainments in the village centre.

Clubs and Activities

These include: Hook Players, Hook Choral Society, Hook Local History Group, Hook Gardeners' Club, Hook Bowling Club, Hook Townswomen's Guild, Hook Badminton Club and Hook Eagle Morris Men (whose origins lie in St John's Church, hence the name), Hook Football Club, Hook and Newnham Basics Cricket Club.

Amenities

A large doctors' surgery with adjacent pharmacy; dental practice (National Health and private); a veterinary practice.

There are several retirement homes including Old Raven House and Geffery's House.

The younger generation have the Base Youth Centre, a full range of Scout and Guide Groups, Hook United Youth Football Club, skateboard ramps, playing fields.

For younger children there are several play parks.

Shops

A medium-sized Tesco store (next to the railway station); newsagents; chemist (Boots); a Post Office; a pet shop; two convenience stores for everyday needs; a gift shop; florist; hairdresser; two barbers' shops; dry cleaners; two charity shops; several take-away food shops; a butcher's shop; a coffee shop; an Indian restaurant. These are situated in the village centre.

HECKFIELD

The Village

Heckfield is a small rural village on the B3349 consisting of a few houses around the church and off the main road with other dwellings, from small cottages to large houses, scattered in a country setting. **St Michael's Church** formed the centre of the medieval village next to the manor house (now **Highfield Park**, a conference and wedding venue) with another large house (**Heckfield Place**) along the road to Hartley Wintney and Eversley. The **Heckfield Memorial Hall** serves as a centre for village activities.

Heckfield adjoins the Stratfield Saye estate, the country property of the **Duke of Wellington** who, until recent years, has been a regular attendee at St Michael's Church.

The Church

St Michael's Church has existed on its present site since at least 1203 and, before that, a church in Heckfield was

mentioned in the Domesday Book (1086). Today, the tower and north chapel date back to 1500, the rest of the building being mainly an extensive rebuilding in Victorian Gothic style in 1876-77 by William Butterfield.

The five bells (one from c1350) have recently been renovated and are regularly rung by a team of bell ringers. The outstanding 1885 stained glass window of Faith and Charity in the south wall of the nave was designed by the eminent pre-Raphaelite artist Edward Burne-Jones and manufactured by William Morris & Co.

Kitchen and toilet facilities were added in 2012.



Village Hall

The William Butterfield designed **Heckfield Memorial Hall** (1863) was originally part of a group of almshouses donated by Viscountess Eversley. It serves as a centre for village activities and some church functions. The Millennium Hall was added to provide an additional smaller function room in 1999.

Shops

Wellington Farm Shop; Holdshott Farm Shop; Rosie's Tea Room.

MATTINGLEY

The Village

Mattingley together with Hound Green are small settlements on the B3349 road, just west of the Whitewater River. The area is mainly set aside for farming with cottages and houses around **Mattingley Church**, along Vicarage Lane (Hound Green) and spread along the B3349. Mattingley was once a cloth producing centre.

Hazeley Heath to the east of Mattingley is a site of special scientific interest with rare birds and butterflies. Local clay was used for brick making – Mattingley church was originally built with locally fired bricks. Local brickmaking died out in the 1930s.

The Church

Mattingley Church is a Grade 1 Listed Building and the main building in the village. Tradition has it that it was built around 1485, although some experts date the brickwork later at around 1530. The Church was widened and extended in 1867-69 by William

Butterfield, sympathetically keeping to the original style. There are two bells, one of which was cast in 1180 or before, making it one of the oldest in Hampshire.



The banner hanging at the west end of the church is that of the late Field Marshal Sir John Stanier (1925-2007), Chief of the General Staff, Constable of the Tower of London, Knight Grand Cross (GCB) of the Order of the Bath and Deputy Lieutenant for Hampshire. As a GCB his banner hung in Westminster Abbey and after his death was removed to the church. Sir John was an active parishioner and for some time Churchwarden at Mattingley.

Village Hall

There is the small **Mattingley Church Hall** situated down a lane from the Church. It is owned by the Church and used for some local activities, mainly a play group.

ROTHERWICK

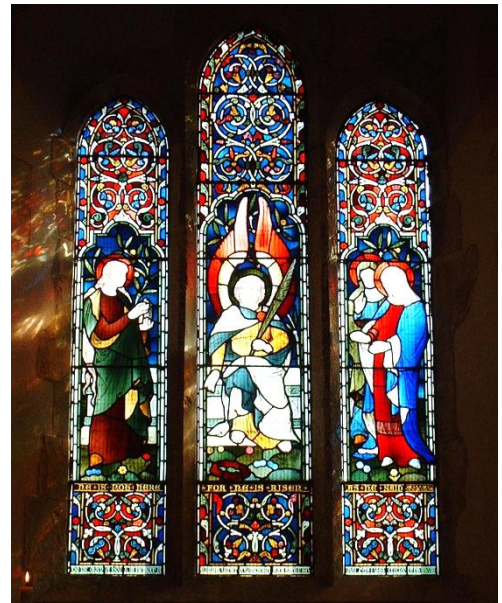
The Village

Rotherwick, some two miles to the west of the B3349, is a small village in a rural setting, with houses and cottages spread out mainly along The Street, the main thoroughfare. The principal buildings in the village are the church, the primary school and the village hall.

Tylney Hall, located just outside the village, is a country house hotel catering for weddings and conferences.

The Church

The **Church** dates back to the 13th century with major alterations and additions taking place in the 1870s. The tower dates back to 1730 and houses 6 bells, one from around 1340. There is an active bell-ringing team.



Village Hall

The **Village Hall** was built in 1932 by Mr and Mrs de Forest in memory of their son, Charles. The hall has been recently refurbished and is the home for a number of activities including badminton, indoor bowls, wedding receptions, parties, dances and church social functions.



St Michael's, Heckfield: Funeral hatchment of Robert Corham who died 1596.

HART DISTRICT

The two parishes of the Whitewater Benefice are situated in the area of North East Hampshire called Hart, after the eponymous river running through the district.

Quality of Life

Hart has the distinction of being the best place to live in the UK according to three national surveys.

It was rated first in the **Halifax Quality of Life Survey** (December 2013) which measured such things as residents' health and life expectancy, crime rate, weather, employment, school results, broadband access, and personal wellbeing. This is the third year running that Hart has topped the survey.

According to the survey, Hart residents are:

- the healthiest in the UK;
- the longest living in the UK;
- more likely to be employed;
- higher earners.

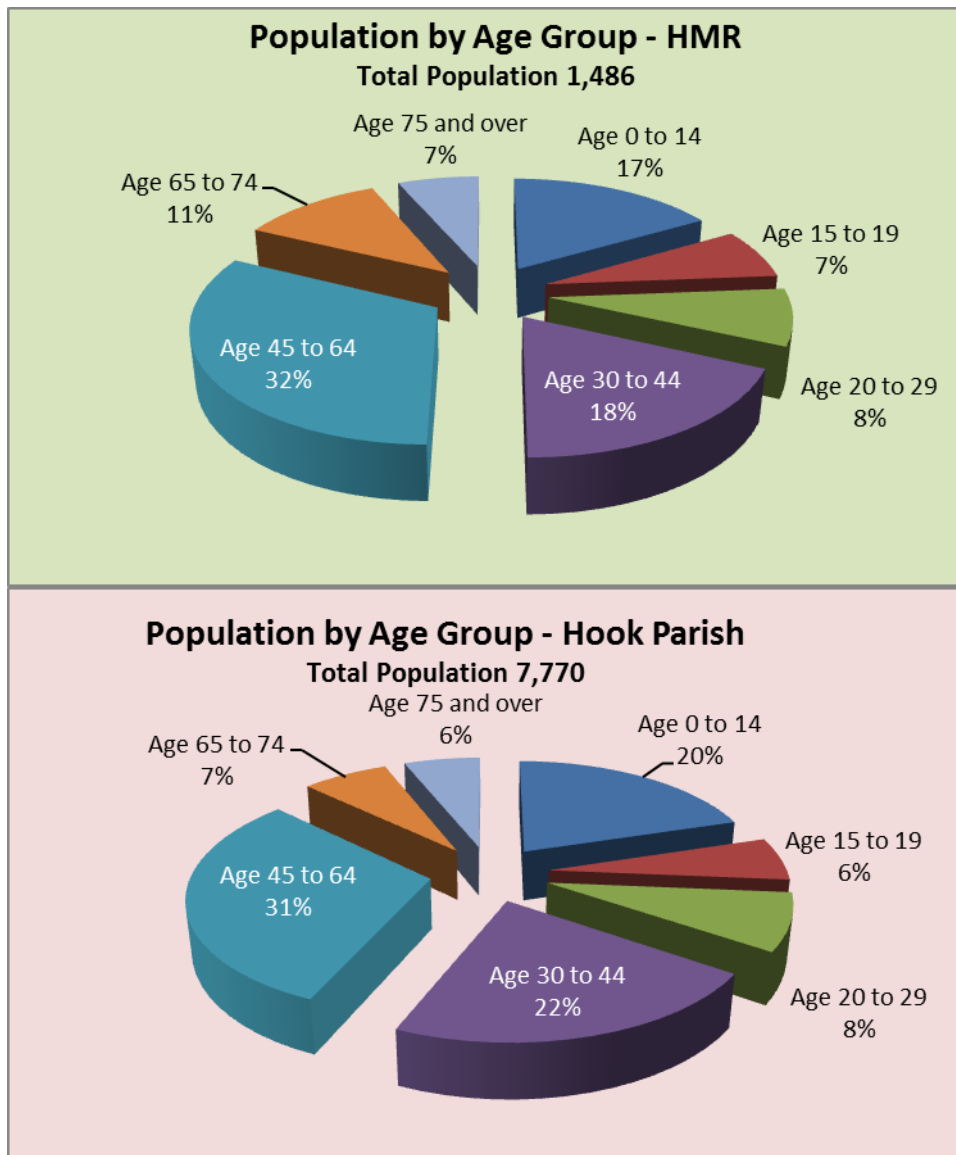
However, the cost of living in Hart is high; the average house price in Hart is 7.0 times the average annual pre-tax local income – higher than the UK average of 5.8.

Well Being

New figures from the Office of National Statistics indicate that Hart's adult population is among the most happy, satisfied and content in the UK. The **ONS Well Being Survey** (2012/13) shows Hart ranking second in the UK for life satisfaction and third for happiness.

Deprivation

Another Government Survey shows Hart to be the least deprived area in the whole of England. The **Government Index of Deprivation** (2010) includes measures of income, employment, health, education and living environment.



Appendix 4 - EDUCATION

The schools and colleges in the area

The Village Schools

The schools are a vital part of the villages and offer an opportunity for a direct link with the young people in the area.

Hook Infant School and Hook Junior School

Hook Infant School and Hook Junior School are located on the same site in the centre of Hook. The mission statement of the Infant School is to work together as a community to provide a happy, secure and stimulating environment where children are motivated to learn, are valued as individuals and encouraged to achieve their full potential.

Hook Infant School

The Infant School caters for pupils from ages 5 to 7. The latest Ofsted inspection (January 2010) rated the school good.



Hook Junior School

Hook Junior School is a County Junior School and caters for children aged 7 to 11. The latest Ofsted inspection (January 2013) rated the school good.

Whitewater C of E Primary School

Whitewater Primary School is located in Rotherwick and rated good (June 2010) by Ofsted and outstanding by the latest Diocese inspection. There is a very close relationship between the local church community and the school. There are many times when there are joint celebrations in the Christian and school calendars at the local church. The Ministry Team and church community are key members of school life, visiting, participating in "Open the Book", teaching and learning with the children.

The School caters for children from ages 4 to 11.

The latest SIAS Report (2010) said "Whitewater Primary School is a good school where values of care and respect for others are lived out on a daily basis within a Christian ethos".

The Parish "Open the Book" Team visits the school most Wednesdays to act out short Bible stories for the children.

The School celebrated its 300th Anniversary in 2012. The late Ninian Swan, who did invaluable work for the parish, provided for a window in Rotherwick Church to celebrate the Anniversary so underlining the close connection between the school and the church.



THE WHITEWATER SCHOOL PRAYER

Heavenly Father, we thank you for our school. Give us every day the strength to follow your teachings and develop a never-ending love of learning. Help us to value one another and be good strong friends. Guided by your Spirit help us to be the best we can. We ask this through Jesus Christ, our Lord and friend. Amen

Robert May's School

Robert May's School is the closest secondary school and is the catchment school for the two parishes. The School is located in the nearby village of Odiham.

The school has 1,203 pupils, aged 11 to 16. The latest Ofsted inspection (October 2012) rated the school good.

Other Schools and Colleges

There are a number of private schools in the area.

There are further and higher education colleges in nearby Basingstoke, Alton and Farnborough, some of which offer degree courses. The closest universities are Reading, Winchester and Guildford.

Appendix 5 - THE RECTORY

The Rectory is an attractive, detached house conveniently situated for local amenities and good road/rail links. Accommodation includes a sitting room, dining room, study, kitchen, utility room, downstairs wc, four good sized bedrooms, family bathroom with shower, separate wc. There is a courtyard garden to front, a good-sized rear garden and a single garage.

Details kindly provided by Carter Jonas, Winchester



The population figures in this Profile are taken from data provided by the Office of National Statistics (Crown Copyright).

ONE BENEFICE
TWO PARISHES
FOUR CHURCHES