

ANNUAL GIFT DAY

St Martin's Church Hale Gardens London

Registered Charity Number: 113297



**SUNDAY 29TH
OCTOBER 2017**

**GIVING FOR GOD'S
WORK IN HIS CHURCH**

PLEASE DON'T FORGET:

Return your gift envelope on Sunday 29th October 2017 when we will be celebrating our and Stewardship Sunday at 10.00am - followed by a reception.

WEEKLY SERVICES

SUN: 8.00am: Holy Communion
10.00am: The Parish Communion including Junior Church
6.30pm: Evensong
11am Wednesdays - Informal Eucharist

All-Age Services by announcement

CLERGY & CONTACTS

Vicar: The Revd Dr. Nicholas Henderson
SSM: The Rev'd Brandy Pearson
Assistant Priest: The Rev'd Robert Pearson
Reader: Dr. Margaret Jones
Reader Emeritus: Mrs Lynne Armstrong
CLM: Jackie Nicholls
CLM: Japanese Anglican Church (UK)
Yuki Johnson

Parish Office: 020 892 2333
website: www.stmartinswestacton.com
email: stmartins@stmartinswestacton.com

WHAT NOW?

Spend some time praying about your decision. Ask yourself this: "Is what I give a realistic proportion of what God has given me?"

If you pay tax, whether it is income tax, or tax on your pension or savings, then please fill in a Gift Aid Envelope. This will enable the church to claim 25% back from the taxman on every pound of your giving, with no extra cost to you.

HOW MUCH SHOULD I GIVE?

This is a one-off special gift to St Martin's. It will of course be supplemental to your regular giving but it is rather like giving a special present – so your generosity will be much appreciated.

"Each one should give
what he has decided in his
heart to give, not
reluctantly or under
compulsion, for God loves
a cheerful giver."
2 Corinthians 9 v. 7

WHAT IS A GIFT DAY?

A Gift Day is an annual opportunity to make a special donation towards the work of the Church.

YOUR GENEROSITY CAN MAKE ALL THE DIFFERENCE

Today we face difficult financial decisions both in the Diocese of London and in our parish. The Kingdom of God needs your financial support as well as your Faith commitment.

Every parish pays into the Diocesan 'Common Fund'. This coming year we have been asked for £81,600. We gladly contribute this sum over and above what we need to run our own parish, as we wish to support other poorer parishes in the diocese.

You can help us meet our commitments with your donation this Gift Day.

Our 2018 income may be **LESS** than our expenditure

we

WAYS TO DONATE

1. BY CHEQUE

Make your cheque payable to '**St Martin's Church**' and put it in one of the Gift Day envelopes with this leaflet or in the church.

2. * BY BACS

Our Bank details are:

HSBC

Sort Code: 40 - 11 - 58

A/C No: 60482676

3. * BY TEXT

Text STMA34 £.....
with your donation to:
70070

* FOR OUR RECORDS

Please use a Gift Aid envelope to return details of your name, address, amount of donation and method of giving.

Alternatively send your cheque/cash to:

The Vicar
c/o The Parish Office
(Rear of Church Hall),
Hale Gardens,
London W3 9SQ.

Please make your cheque payable to:
'St Martin's Church'

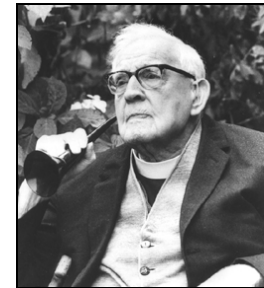
A CHURCH REFLECTING LIFE & TIMES

The building of St Martin's church, commenced in 1905 and completed in 1906, was to serve the new and growing population that was developing in West London as a result of the extension of the Piccadilly Line in the previous century.

The church was consecrated on St Martin's day, 11th November 1906 by Bishop Arthur Foley Winnington-Ingram, Bishop of London from 1902 to 1938. During the 1930s vestries were added to the building and during the 1960s a Hall and church flat were built.

Amongst distinguished members of the clergy, we remember in particular the Rev'd 'Harry' Clement Williams who retired in 1938 and died in 1992 aged 107, being the then oldest living Anglican clergyman in the world!

What's that you say!



The Rev'd Harry Clement Williams, former vicar, aged 106, in the 'good old days'.

The present incumbent, the Rev'd Dr. Nicholas Henderson was originally priest-in-charge from 1985 and from 1996 has held the position of vicar.

OUR FUTURE

St Martin's today is a vibrant Christian community dedicated to sharing God's message. It depends almost entirely on you to continue the good work.