

# THE

# PARISH



# NEWS

**News from the Churches,  
the clubs, groups,  
& societies of  
Ninfield & Hooe**

**October 2020**

**50p**



# St MARY's & St OSWALD's

## NOTICE BOARD

### CHURCH SERVICE TIMES



Date	St. Mary's 9.30 unless stated	St. Oswald's 11.00 unless stated
4 <sup>th</sup> Oct	Parish Eucharist	Family Service
11 <sup>th</sup> Oct	No Service	10.30 Joint Parish Eucharist
18 <sup>th</sup> Oct	Family Eucharist	Parish Eucharist
25 <sup>th</sup> Oct	Parish Eucharist	Parish Eucharist

#### Opening times for Private Prayer

St Mary's - Tuesday and Friday 10.00 am to 4.00 pm

St Oswald's - Open daily from 9.00 am to 5.00 pm

**APPOINTMENTS** All enquiries about Baptism, Marriages or reading of Banns and concerning any other Church matters should be made to The Church Wardens, details on the back page

*Any alterations or additions to these service times will be displayed on the church notice boards, the weekly sheet and can be found on the church website along with other church details ~ [www.ninfield.org.uk](http://www.ninfield.org.uk)*

**PARISH NEWS** Views expressed in the articles in this magazine are those of the writer and not of the Parish Churches or PCCs unless it so states. This publication is produced and distributed by Members of both Parish Churches.

Dear Friends ,

Sheep don't often hit the headlines, but a few years ago there was a New Zealand ram, known as Shrek, that did. It seems that Shrek took a dislike to being sheared and hid among the rocky caves for six years. When the farmer finally spotted the animal, he didn't recognise him as a sheep at all.

Shrek's feet were barely visible for the fleece had grown and grown. When Shrek was sheared the fleece weighed more than sixty pounds. Shrek had wandered away on the rocky slopes alone. I am sure we have all experienced the panic of feeling lost. I remember years ago in the Black Forest we went for a walk with the children when they were very young and while walking the heavens opened and we got soaked, but not only that we were not sure which way to go and the rain was getting heavier and the rivers and streams were flooding. It can be frightening, disorientating when we lose our bearings. Everything is unfamiliar and maybe even threatening. It can become confusing and a sense of panic can begin to rise. But we don't have to wander the hills to become lost. Sometimes we can feel lost and alone in our own homes, and even when friends and family surround us. The feeling of lostness is about that empty space that sometimes opens up within. It can happen when we receive bad news about our health, or when we lose our job, or a loved one dies and of course we can feel that in these difficult times of uncertainty with how to cope with this virus.

The twenty third psalm, The Lord's my Shepherd, is the most well-known psalm. Many have turned to the psalm when they are in need. The psalm pictures God as a Shepherd who we can turn to when we have become like Shrek and wandered away from green pastures. The writer of the psalm declares 'He restores my soul'. In effect, he puts us on our feet again, and re-energises our whole being. But how does he do it? How does the shepherd-God restore our souls? I have found often it occurs through another human being. Someone who comes alongside us and helps us in our predicament; sometimes it can be a friend, sometimes a complete stranger. The parable of the Good Samaritan teaches us that help can come from the most unexpected quarters.

If you are currently lost at the moment and struggling with all that life is throwing at you, then I encourage you to read Psalm 23 and allow it to nourish your soul. If you're not lost at the moment, then maybe you could be a Good Samaritan to someone and come alongside them in their need. We all need a friend in these difficult times but be assured, we are not on our own! Our heavenly father is always there, we just sometimes do not realise it! At those times we need to be still and know that God is there sometimes in the most unexpected places and certainly when we feel lost.

Paul

## PRAYER

### A Helping Hand

There is much we can do just to brighten  
This world of all take and no give,  
There's a great deal that we can contribute  
Through the everyday lives that we live.

By supporting one's elderly neighbours  
Or through lending a hand in some way  
It's by taking a bunch of spring flowers  
To someone to brighten their day.

It's by sparing a few precious hours  
In the service of those most in need  
It's all about setting a standard  
And trying to give others a lead

It's the way that we tend to treat others  
And help and aid folks in distress  
In the care and assistance we offer  
That will set us apart from the rest.

The choice that we face is quite simple  
The rewards plain for all men to see  
As you did all of this to my brother  
Then said Jesus, you did it to me.

By Colin Hammacott

## Editors' Note

Having prepared the last four months' editions as online copies only, where we didn't have to worry about the number of pages, we could use lovely colour photos and we had lots of lovely articles, this month we are pleased to say we are back to the printed version, but it does mean checking how many pages, the printers need them to be in fours, colour photos do not look good in black and white and for some reason, our writers seem to have a bit of a block, so we're sorry, but not too much to read.

That said, the printed version is what this magazine is all about. We print and deliver over 450 copies to Ninfield and Hooe against about however many online. We emailed out about 100 copies, some of those got emailed to other people and we put the copy on the web site with a link to it from the Ninfield Community and other Facebook pages, so we really don't know how many people actually read each edition. So now we are back, please, get your thinking caps on and write something for the next edition. As we haven't got many activities to advertise or report on it would good to be able to fill the Parish News with lots of different ideas and articles. Just a few minutes of your time is all we ask. E.g. gardening hints, cookery ideas anything!

However if you didn't know we were online you can find all the copies you missed at [www.ninfield.org](http://www.ninfield.org) so you can catch up should you wish to do so.

If you had been reading online, and didn't receive printed copies before you can buy a copy in Ninfield Stores or Hope Farm Cottage or email us at [ninfieldhooenews@gmail.com](mailto:ninfieldhooenews@gmail.com) and ask to go onto the delivery list.



### St Oswald's Parish Church

Burial of Martha Cheese 10th September 2020

*from the  
Parish Records*

Closing date for items for the **NOVEMBER** edition  
of the Parish News is **TUESDAY 13<sup>th</sup> OCTOBER** please send to  
[ninfieldhooenews@gmail.com](mailto:ninfieldhooenews@gmail.com)

## Quinn's Carpentry

*Bespoke carpentry to suit your needs*

Tom Quinn

*Carpenter and Joiner,  
20 years experience*



07515 907210 tomquinn1984@gmail.com

Experienced

## HANDYMAN

**Painting, Plumbing, Gardening,  
House Maintenance etc.**

Phone RICHARD

01424 272136 /

07980 933766

All jobs considered

Free Estimates

## C & C Carpets

CARPETS - VINYL - TILES Etc

SUPPLIED AND FITTED

*No Job too small*

CLIVE SCOTT ☎01424 893209

## BRIAN WICKENS PAINTERS & DECORATORS

Qualified Tradesman

Free Estimates No VAT

Home: 01424 224328

Mobile: 07803 095061



Hire local portable toilets for all occasions

Please contact us for further details

**info@meridiantoilethire.com**

We conform to all Health & Safety standards



☎ 01424 892257

info@haffendenroofing.co.uk

www.haffendenroofing.co.uk

## Gentle Sole Foot Therapy

Foot Care in Your Own Home

*- including routine Diabetic foot and nail care*

Julia Stickells

**Foot Health Practitioner**

SAC Dip FHP-, SAC Dip-F-IPP, MRFHP

Mob: 07512 118650

Web: gentlesole1066.co.uk

Email: gentlesole1066@gmail.com



**EAST SUSSEX  
OSTEOPATHS**  
TREATING THE WIDER FAMILY

Registered with the General Osteopathic  
Council and the Institute of Osteopathy,

**East Sussex Osteopaths offer clinic**

**appointments in Dallington & Heathfield.**

**To book an appointment, 07762 576 492**

[www.eastsussex-osteopaths.co.uk](http://www.eastsussex-osteopaths.co.uk)

Calls for complementary advice also welcome

## OUR SCHOOL

We opened our gates at 8.45am on Friday 4 th September to lots of happy, smiling faces – and the children were ok too! We've got staggered starts and finishes; lunchtime is a feat of extraordinary strategic planning and I am going to buy shares in hand sanitiser companies.

But, what we do have is a school full of happy children who couldn't wait to get back to school, meet all their friends and get back to some sort of normality. Yes we have class bubbles who have to stay and play together but, apart from all the additional hand washing and cleaning that is going on, it is still recognisable as a place of learning. What has been really encouraging is the very high attendance numbers, given the level of concern in the media about the re-opening of schools.

We don't have the luxury of extra classrooms or staff, so it is a difficult balance of trying to maintain a structured learning environment while carrying out a very comprehensive cleaning regime to try to minimise the risk of infection. So far that is working well, we've even managed to get some Governor's to put on their Marigolds and join in!

The first couple of weeks are all about assessing progress and trying to gauge the impact that missing the last two months of term has had on the children. So it is quite hard on both the children and the staff, but everyone is feeling positive and keen to get on with it. Luckily, as I write this, the weather is warm so everyone can at least get outside. It's the dark, wet days of winter that are likely to stretch everyone's staying power.

It's a very strange time at the moment so to be able to walk across the Rec and hear the noise of children happily playing in the playground brings a little bit of stability back to this Mad Mad World.

Ian Moffat

# **N**INFIELD VILLAGE SOCIETY

As advertised our litterpick occurred on Saturday 13th September and it was great to see so many volunteers, faces old and new.

We collected 18 bags of rubbish and a child car seat (!) from the main routes through the village and around the footpaths and Rec. Many many thanks to those who gave their time to this worthwhile cause and please come along next time !

In the meantime we are trying to improve some of the pathways in Church Wood, and to clear weed from the ponds. The leaves will start to descend as we move into autumn and we complete another year. Regular visitors will note the clearance of trees and undergrowth from around Robins Pool, enabling a better view of the pool and outward to our neighbour's new lake.

We look forward to seeing you in the wood in future.

## **A BIG THANK YOU**

Ninfield Village Society and Ninfield Village Memorial Hall would like to thank everyone who supported the produce sale outside Sparke Pavilion on Saturday 13<sup>th</sup> September.

Just after 8.00 Robin trundled across the Rec with his truck, laden with trestle tables and plants, along with all the items needed for the clean up. The tables were slowly loaded with all manner of produce donated by many many people in the village. We had jams, pickles and cakes. Cooking apples, eating apples and quinces; rhubarb, courgettes, beetroot, tomatoes, lettuce and more.

We also had a huge supply of plants, all garden plants to plant ready for next year, along with various varieties of seeds.

So as the sun shone, children played football, volunteers arrived to wander around the village clearing rubbish, the stall had a steady stream of shoppers.

The only sad note, after the football several of the children came over to buy some cake, but we had sold out!

Of the items remaining at the end of the sale, the plants went back to whence they came and anything that could be pickled or jammed went to be prepared for the Home Made Fayre produce stall, but there wasn't much left! So again, Thank You



# NINFIELD VILLAGE MEMORIAL HALL VILLAGE MARKET

**SATURDAY 17<sup>th</sup> October**  
**9.30 - 12.00**

Following Government guidelines, there will be a one way system in place, so entry via the main doors and exit at the side, and face masks to be worn

So come along and get your  
**cakes, pies, fruit & vegetables,**  
**eggs, honey, gifts and crafts**

There will be also be take-away teas, coffees and cake

We look forward to seeing you there

Have a go at our new monthly **FRESH MEAT RAFFLE**  
**Tickets £1.00 buy on the day, drawn on the day!**



The Old Byres Catering Company  
Theoldbyrescc@gmail.com  
07526930646  
**CAKES, BAKES AND DELICIOUS  
PARTY FOOD**

## Sussex Wildlife Control

For a fast, friendly and discreet service

Ants  
Bed Bugs  
Bird Control  
Carpet Beetles  
Cockroaches  
Fleas  
Fly Control  
Mice  
Moths  
Rats  
Rabbits  
Squirrels  
Wasps  
Moles & More

Call Now

**07505 864 063**

Domestic and commercial  
pest control

## DANCE CLASSES 'MOVEMENT 2 MUSIC'

For the Older & Still Active Person  
Every Mondays 10.00 am

## LADIES DANCERCISE

Every Wednesday evening 6.30 pm  
'BURLESQUE!'

Fortnightly, Friday evenings 7.00 pm

All classes at the MEMORIAL HALL  
Fully Qualified Professional Teacher  
Call : SAMANTHA GUARD A.I.S.T.D.Hons.  
01424 893699 or 07970 650321



## HOPE COTTAGE FARM SHOP & TEAROOM

Hooe Road, Ninfield, TN33 9EL, 01424 892342

Breakfasts served all day  
Lunches, specials, High Teas, cakes,  
desserts  
Roasts on a Sunday

**Hampers, Gift Ideas & Vouchers**

**Mon to Sat 9am-5.00pm ~ Sun 10am-4pm**

## Message from Sami.....

Fantastic Fun & Fitness from Monday to Friday!

Well - as you will see from Carol's notes on activities in the Memorial Hall - the emphasis seems to have taken a 'physical turn', with Dance Classes (various!), Yoga, Cardio, Pilates - you name it, it's available to try - so NO excuses!!

Obviously the Hall has enough space for us to follow good social distancing in all genres; and what a boon that is! Not only can new people utilise the amenity, and keep enjoying their chosen classes, but also they can learn more about the history of the Hall and how we are trying to maintain and upgrade it's facilities. The Hall has always made friends with the people who love it...and more and more people are joining that group!

So - For my Dance Classes, here's what is happening:

**Monday Mornings 10-11am** - we have the Movement 2 Music Classes - Chair based and Standing Exercises, for the Older but Still Active Person! - At the moment nearly 20 lovely ladies AND gentlemen come to stretch, swing and sway, and generally loosen up the limbs, strengthen the torsos and cores, and have a good old giggle all at the same time! There are a few spaces available - if you would like to come and try a class - please call me on the numbers below!

**Wednesday Evenings - 6.30-7.30pm** - its -Dancercise! 2 Warm ups, plus great routines with different styles from Disco, Jazz, Salsa, Cha Cha, Modern, Swing, Lindy, Charleston..all the fun is in learning new steps and dance styles, while exercising the body and brain!

**Friday evenings 7 - 8pm** - Alternate weeks - Wk 1 - Show Dance/Burlesque- Think of shows/films like - 'Chicago', 'Cabaret', 'Moulin Rouge' and that's the sort of style we work in! I have been a professional dancer for over 40 years - yes, still doing it!- and, from my time in the West End, and in Films, I can pass on a LOT of gorgeous original, show routines that work the body, brain and feel good factor! - There are a couple of spaces left - so please get in touch!!!

Wk 2- ' Strictly Ballroom!' Yes!! Have some fun learning how to do the basics of the Waltz, Cha Cha Cha, Quick Step - chasing the Strictly T.V Series as it goes along, and having YOUR opinion as to how THEY are doing !! I will be teaching the different styles as if everyone is a Solo dancer, to fit in with social distancing -couples can apply to join, they will be counted as 1, in a bubble - so everyone will feel included!

Do call me for further information - and to book one of the 4 spaces left!!

AND, Do you fancy Learning how to Tap Dance? Beginners Classes for novices, and more advanced classes for those who want to brush up former skills - limited spaces in each class so Call me for details on Day and Time!!!

These are strange times that we are living in, and we are finding that trying something new; learning a new skill, and getting fitter in mind body and spirit is helping us all keep going!

So let's get together and DANCE!!

Sami Hughes-Guard - A.I.S.T.D.Hons. - that's me! Call 01424

**NADAS**, sadly, will not be starting again, following the government's new laws. Having got very excited, that we had sufficient measures in place to be able to safely run the group the committee decided that we could not start after all.

Members have been informed via the WhatsApp group, Facebook, phone or email and I will continue to keep them informed of any developments.

Jennie will shortly be starting a '**Monthly Drawing Challenge**' so get those pencils, pens, or charcoal sharpened!

## **St. Michael's Hospice News**

### **Hospice Care Week 5th – 11th October**

Every year St Michael's Hospice takes part in Hospice UK's annual awareness campaign, Hospice Care Week, taking place this year from 5th – 11th October. During Hospice Care Week the Hospice is encouraging the local community of Hastings and Rother to support their local hospice in whatever way they can. May be visit one of the Hospice's charity shops, hold or attend a virtual or socially distanced event in aid of the Hospice, joining their lottery or even joining their social media pages. For more information about Hospice Care Week keep an eye on their social media channels or [www.stmichaelshospice.com](http://www.stmichaelshospice.com).

### **Lights of Love 2020**

Each year St Michael's Hospice hosts Lights of Love, an opportunity to make a tangible act of remembrance for loved ones no longer with us, in the form of dedicating a star or heart on a Lights of Love tree.

Details about Ninfield's tree next month or [www.stmichaelshospice.com/keepintouch](http://www.stmichaelshospice.com/keepintouch)

## HOOE HISTORY SOCIETY

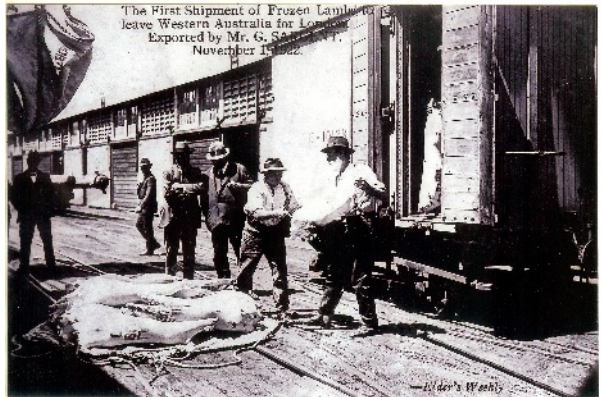
Hooe History Society meetings remain suspended until further notice, in line with many other organisations.

DID YOU KNOW... George (Gaddy) Sargent (1879 – 1941) was a highly motivated figure in the early 1900's and a leading individual, possibly in the country, at that time. He was born in 1879, the son of George and Elizabeth, living in Pleasant View Cottage, Coffee Square. He quickly developed a professional attitude to his father's business of farming, which enabled him to expand their operations.

He joined the Sussex Yeomanry in about 1901, proficient and knowledgeable with horses and shooting. During the First World War he was commissioned by the government to purchase horses in Ireland for the British army.

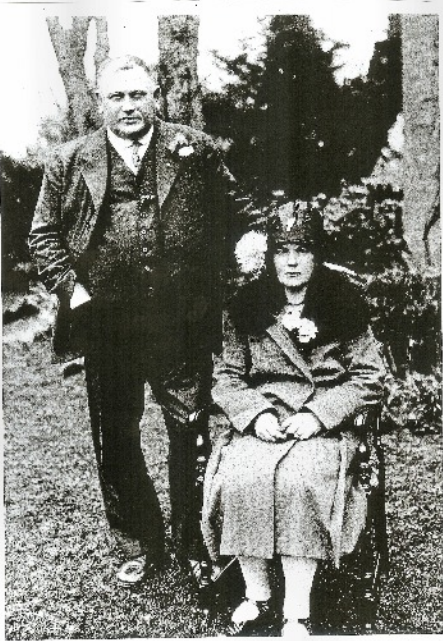
He married Lydia in 1902 and they had eight children. He learned about the butchery trade in the small slaughterhouse opposite the school, which his father had bought. He moved to Bexhill in 1910, but by 1918 he was back in Hooe, first renting then eventually buying New Lodge Farm.

It was whilst he was at New Lodge that he undertook a trip around the world and recorded one of his most notable achievements when it is said he became the first person to import frozen lamb from Western Australia into London, in 1922. This was recorded in Elder's Weekly, a Western Australian newspaper.



He bought Grove Farm in 1926, which included Parsonage, Olives, what is now Nutbrown, Lords and Waterhouse Farm in Wartling. He also at one stage bought the Lamb Inn for £100, and then sold it a short time later for £105, a very reasonable profit in those days. During the 1920's George founded the Kent and Sussex Wholesale Butchers and Graziers Ltd Company, based in Pevensey.

He moved again in 1929, to Hooe Lodge Farm (The Vicarage) then to



Sidley in 1933 and finally to Horam in 1936 where he died in 1941, aged 61. He was buried in Hooe church yard, the village of his birth and where he had lived for almost three quarters of his life. A newspaper cutting describing the funeral in St Oswald's listed 69 named attendees amongst many other mourners.

It is unclear exactly why George moved as often as he did, but we can assume that it was probably for sound financial reasons as he clearly had a nose for a lucrative business deal. He was also a highly respected and very popular man, as demonstrated by the attendance at his funeral. Several of his descendants have lived in

Hooe – notably the Sargents and Crouches – but there are others in the surrounding area.

### **Litter Virus**

A face mask is a helpful thing –  
It traps those nasty germs!

An extra message I must bring  
In these poetic terms:

When you've finished with your mask  
A bin is simply found

So drop it in – an easy task!  
Don't leave it on the ground!

We have been asked to remind everyone, please, please remember to wear your facemasks when you go into Ninfield Stores or The Garage, as well as everywhere else you go. If this stops just one person being infected, it will be worth it and as Winnie says on page 23 'Let's get back to hugs!'

## SCOUT GROUP FLOWER ARRANGING FUNDRAISER A SUCCESS!



The 1st Ninfield and Crowhurst scouts latest fundraising event on Wednesday 2nd September was a blooming success. Twelve ladies joined us in a distanced Autumn basket workshop to have some creative fun for a good cause. Following on from our Christmas wreath workshop last year we had planned to run an Easter arrangement event in April. With the lockdown and all the disruption of Covid-19, this class had to be postponed a couple of times.

With new arrangements in place, a small group and other covid measures in place it I was a delight to be able to run the event at Catsfield hall and raised £187.80 for the scout group. The photos are a small selection of the arrangements made by the guests. All the guests said they had very much enjoyed the event and some had even recognised some old friends they had not seen for years. One lady said “It has been a delight to have something nice to look forward to”.



We are currently planning our Christmas Wreath fundraiser workshop for Wednesday 9th Dec. Guests will make a beautiful traditionally made wreath using a wide selection of materials to choose from. Although our price is very competitive, please don't think this will be anything less than a beautiful wreath. We can charge an excellent price as we are all experienced wreath making volunteers raising funds for this amazing group. There will be a morning class and one in the evening costing £25 per person including tea/coffee and cake/nibbles. Times to be confirmed but we will be booking places and if we need to cancel due to a lockdown we will refund booking fees. To book a place, Please contact Veronica Sargent 07714327117




## PARKER & SON

BUILDING, ROOFING & SURVEYING

Building the future and restoring the past since 1929  
NEW BUILDS - ALTERATIONS & CONVERSIONS  
RESTORATIONS - EXTENSIONS - GROUND WORKS  
BATHROOMS & KITCHENS - GARAGES - ROOFING SERVICES  
- SURVEYING- LISTED PROPERTIES - COMMERCIAL  
01424 892933

Info@parkerandsonconstruction.co.uk  
www.parkerandsonconstruction.co.uk



Are You Legal in 2020?

Did You Know? As of January 2020 the regulations surrounding the disposal of rural sewage change. You are now NOT allowed to discharge your septic tank directly into the environment.

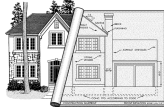
For further information and advice contact the experts:  
Email: [info@sussexwaterdrainage.com](mailto:info@sussexwaterdrainage.com) Tel: 01435 830220

Sussex Water & Drainage

## ELM ARCHITECTURAL SERVICES

New building ~ Conversions  
Extensions ~ Garages  
Drawings prepared & submitted to  
Local Authority for Planning and/or  
Building Regulation approval

Pete Holland  
01424 893326  
07879 898772



## FULLERS ROOFING (Sussex) Ltd

Well Established Ninfield Firm  
All types of roofing & building works  
Proud Member of Check A Trade.com  
**01424 810417 or 07812194145**

Find us at  
[www.fullersroofing.co.uk](http://www.fullersroofing.co.uk)  
Email: [info@fullersroofing.co.uk](mailto:info@fullersroofing.co.uk)

# ASTBURY

Windows, Doors  
& Conservatories

Tel: 01424 893820  
Mobile: 07740 877422

Email: [info@astburywindows.com](mailto:info@astburywindows.com)  
[www.astburywindows.com](http://www.astburywindows.com)

**Mrs. M. Keeley**  
M.C.HP. M.A.F.HP

*Foot Health Home Visiting Service,  
Nail Cutting, Corns, Calluses*

Tel: 01424 892120

JBN BUILDING

Restore-Build-Maintain

All aspects of building work undertaken, covering all trades.  
Free estimates and friendly advice.

Call John **07725752927**

Email: [info@jbnbuilding.co.uk](mailto:info@jbnbuilding.co.uk) [www.jbnbuilding.co.uk](http://www.jbnbuilding.co.uk)  
Established and based in East Sussex since 2009.

# Hydra

## Window Cleaning



James Parris

[hydracleaning@mail.com](mailto:hydracleaning@mail.com)

07515460008

[hydracleaning.co.uk](http://hydracleaning.co.uk)

## APPLE AND BLACKBERRY LOAF

- 250g self-raising flour
- 175g butter
- 175g light muscovado sugar
- ½ tsp cinnamon
- 2 rounded tbsp demerara sugar
- 1 small eating apple, such as Cox's, quartered (not cored or peeled)
- 2 large eggs, beaten
- 1 orange, finely grated zest
- 1 tsp baking powder
- 225g blackberry

### Method

Preheat the oven to 180C/gas 4/fan 160C.

Butter and line the bottom of a 1.7 litre loaf tin (see tip below).

In a large bowl, rub the flour, butter and muscovado sugar together with your fingers to make fine crumbs.

Measure out 5 level tbsp of this mixture into a small bowl for the topping, and mix in to it the cinnamon and demerara sugar. Set aside.

Coarsely grate the apple down to the core and mix in with the eggs and the zest.

Stir the baking powder into the rubbed-in mixture in the large bowl, then quickly and lightly stir in the egg mixture until it drops lightly from the spoon. Don't overmix.

Gently fold in three quarters of the berries with a metal spoon, trying not to break them up.

Spoon into the tin and level. Scatter the rest of the berries on top.

Sprinkle over the topping and bake for 1¼ -1 hour 20 minutes.

Check after 50 minutes and cover loosely with foil if it is browning too much.

When done the cake will feel firm, but test with a skewer.

Leave in the tin for 30 minutes before turning out, then cool on a wire rack.

Peel off the paper before cutting.

Will keep wrapped in foil or in a tin for up to 2 days.

Enjoy



**JOHN BIGNELL**  
Garage Doors

Automation / Repairs / New Doors

**01424 210522**

johnbignell@btconnect.com

**2 Course Lunch**

**£9.75**

Inclusive of Coffee

**The Richmond Luncheon Club**

Serving every Monday

Please call us for more details

Advance Orders essential

**01424 212836**

**The Richmond Restaurant**

**The Northern Hotel**

Sea Road, Bexhill on Sea - TN40 1JN

**BLACKSMITHS INN**

To book 893875  
Weekly Specials

**TAKE-AWAY MENU**

Pie, chips & peas

Burger & Chips

Fish, chips & mushy peas

Veg lasagne & garlic bread

All £10. Tues/sat 12-3, 6-9

Roast dinners Sundays 12-6 £10

Desserts Banoffee/Apple pie £3.50

**TABLE TENNIS**

**THURSDAY EVENINGS**

**7.15 - 8.30**

**ALL AGES AND ABILITIES**

**GET ACTIVE**

Just turn up

**£4**

**BATTLE SPORTS CENTRE**



Gas Boiler Servicing  
from £60+VAT

Oil Boiler Servicing  
from £80+VAT

Gas Safety Certificate  
from £49.50+VAT

**Boiler Installation & Servicing**

Including landlord gas safety certificates

**General Plumbing & Heating Services**

**Underfloor Heating**

**Kitchen & Bathroom Installations**

**Honest, Professional & Affordable**



Constructionline

**01424 892933**



info@pandspumbing.co.uk | www.pandspumbing.co.uk

**Clifford**



**Upholstery**

Professional upholsterer with over 25 year experience in modern and traditional upholstery methods.

Re-upholstery & recovering, Cushion making  
Bespoke furniture, Repairs & Modifications  
Headboards & plywood curtain pelmets

Upholstery tuition

07943 008 739 /

paul@cliffordupholstery.co.uk

for a quote or to discuss your requirements.

**SUSSEX SECRETARIES**



**DO YOU NEED HELP  
FOR YOUR BUSINESS  
OR IN YOUR HOME?**

**Call us to discuss  
how we can help**

**01424 892463 07940 886123**

**www.sussexsecretaries.co.uk**

**EMMA TELFORD**

**Mobile Hairdresser**

**All hairdressing services in your  
own home.**

**Please phone for an appointment  
or with any enquiries**

**07812 375158**

## WHAT IS A HUNDRED?

Ah! You cry: a hundred is ten times ten – yes, but that’s a short hundred – there was a long hundred of 120!! But we are in the Ninfield Hundred, so what does that mean? Long ago, when the Ancient Britons had been pushed to the edges of the known world (Wales and Cornwall – or even across the Channel to Briton-ny) by the Romans, once they’d gone, like everywhere when a power vacuum exists, tribes soon arrive to fill up what’s available.

In Sussex, there was a tribe known as the Hastii (possibly because they had short tempers) that occupied the area around Hastings, but the Friesians (always had bad hair) Jutes (the Beatles wrote a song about them Hey Jute) Angles and Saxons from Northern Europe, pushed out by the Huns (from Hun-garia) but the Saxons soon put an end to them.

They used a weapon called the sea axe, and settled in the South of Angle land, in such places as West Saxons, East Saxons, South Saxons and those who weren’t sure in Middle Saxons, which we know today as Wessex; Essex and Sussex. It may even survive as the Scottish Saxonach. Having absorbed much of the Roman style of life, they tried to emulate it, without the same resources the Romans had. Often this meant living in abandoned villas until too ruinous to use any more.

Later arrivals from the Continent found that these longer established Angles/Saxons resented them pinching their land, resulting in many centuries of conflict. The Saxons grouped together as bands of warriors and their families, each being given sufficient land to grow crops on to feed their family and justice being overseen by an elder, known as an ealdorman, from which we get the word “earl”). The amount of land each family required was known as a hide, and a hundred hides made up a Hundred, and many Hundreds would make up a Shire, where the principal officer was the Reeve, from which we get “sheriff” (shire-reeve). The Hundred was intended to be self sufficient and able to defend itself from all but overwhelming attacks, and was required to send 100 warriors when required to form an army when the King went to war. As this would be defending their own lands obviously the warriors naturally responded, leaving the less able and youngsters as a reserve force to protect the settlement.

What has this to do with Ninfield? Well, we are the Ninfield Hundred, and it stands to reason therefore that no matter what its size may have been at the Domesday Book in 1086, it must have been the premier Saxon settlement. Otherwise it would be the Ashburnham, Catsfield or Hooe etc Hundred.

We know that Roman cremation vessels were found at Ingrams, that there was iron working on the Watermill Stream and that evidence of Roman cremations were also found at Tilton, in 1900 when Twisly House was being built, just the other side of Christmas Tree Farm.

Many of the boundaries of Hundreds were the basis on which to form Parish and District boundaries (but not always) and settlements grew as the population increased, as we see in the smaller hamlets of Russells Green and Potmans Lane.

So, why Ninfield as the centre of the Hundred. I don't profess to know the answer, but there might be some clues about the way the village has developed. Take the Church. It is not in the centre of the village, or on a cross roads, where often the Church, pub and manor house would be on the corners, It is set some distance back from the ridgeway that is now the A269. Why?

Firstly, it has superb views, and such locations were prized as being good defensive positions, able to see who was coming, friend or foe. So, a settlement would likely form at such sites. Second, Churches in olden times often took over a pagan site, to ease followers of one religion to continue with the new. A later settlement, after Christianity had been established would be on a more logical site, such as a cross roads etc. It also has at least one ancient yew, that must be the best part of 1,000 years old (planted here by William) and often these are the second or third generation saplings from Druid groves. Druids weren't just in Wales, that was the last place they survived after being exterminated by the Romans. So Ninfield has a rich history that archaeology may one day reveal in more detail.

Kevin Regan

A second year student explaining to a first year student how to write essays: "When you take stuff from one writer, it's plagiarism, but when you take it from many writers, it's called research."

# **Ninfield Parish Council**

## ***Your Parish Concillors***

Kamala Willaimson Chair 07933 492265

email: [cllr.kamalaw.williamson@ninfielddpc.co.uk](mailto:cllr.kamalaw.williamson@ninfielddpc.co.uk)

Sam Guard	893699	Sheila Collins	893308
Pam Doodes	892329	Peter Holland	893326
John Cheshire	892248	Jackie Langley	892422
Paul Coleshill	893138	Kaye Crittall	892883

Clerk Jackie Scarff 07725 843505

e-mail – [clerk@ninfieldpc.co.uk](mailto:clerk@ninfieldpc.co.uk)

Normally in August there is no Parish Council meeting and this year was no exception, we are meeting on Monday 21st September and will agree dates for the rest of the year. Look out for these as there may be some changes.

Last month we wrote asking for you to send representations to Wealden District Council about the proposed development by Thakeham Homes. Thank you to all those who did, showing Wealden that the village is united in considering this application to be unsuitable. The consultation deadline has passed but Wealden would still have to take account of any representations that come in until the planning committee meeting, so if you didn't manage to send one in you still can. We only get a week's notice of the planning committee agenda and will not see the officers report, with their recommendation, until 5 days before the meeting, We will be able to put further representations in response to the officers report but the turnaround time will be tight. There are still some statutory consultees who need to respond so for now we are playing a waiting game for the next stage.

We are progressing our efforts to register Church Woods as a nature reserve to help protect it. An ecologist came to visit the woods and was absolutely thrilled with what she saw. She described it as 'a little treasure' and couldn't speak highly enough of the work done by the Village Society looking after it. We are incredibly lucky to have the Village Society in Ninfield who quietly do all sorts for maintenance work – some probably goes un noticed, for example, one of our fingerposts was at risk of loosing an arm but was fixed in a jiffy by one of the village society member. Similarly one of the picnic benches in the children's playground had been turned upside down and broken. As soon as the village society learned about this they collected the broken bits and repaired the bench for us.

The cricket season is now over, and although the cricketers didn't get to play many games they enjoyed playing once the Govt guidelines allowed. They had to put some work into rejuvenating the cricket square and had to play on some of the hottest days of the summer but it was great to see the teams back on the recreation ground. You have probably noticed that we have a football team playing on the recreation ground again. Pass and Move are a local club based in Hastings and are really keen to become involved in the community here. They have already had some children join from the village since training on the recreation ground. They believe in football for all and are happy to be approached if you have a child wanting to play football.

## **NINFIELD VILLAGE MEMORIAL HALL**

INVITE YOU TO JOIN US AT OUR

**ANNUAL GENERAL MEETING**

**MONDAY 12TH OCTOBER 7.30PM**

Our next year is set to be really exciting, it will be our 100<sup>th</sup> birthday! Yes, the Hall purchase was completed on 28<sup>th</sup> February 1921 although the Hall itself is much older, having been built about 1863 making it nearer 160 years old.

So how do we celebrate this event? We are waiting on the final outcome from the Lottery to know if we can do the BIG build, so you can see now is a really good time to get involved.

Yes, like all groups we would love some new committee members to come and help, really understand the workings of the Hall, but we would also like some volunteers who could help out with specific jobs, like making cakes or the teas at our events; putting up the posters to advertise the events, run our Facebook page and website; we do have quite a list! So please if you can spare any time, have ideas on 100<sup>th</sup> birthday parties, like the idea of painting and decorating, just like the idea of being involved, please please come along to the AGM, we'd love to see you.

# SJFeist

& Co Limited

HEATING & PLUMBING ENGINEERS

Aga/Rayburn Approved  
Oil & Gas Boilers Serviced

£100 off New Boiler Installation or

£15 off a service with this advert

**CALL: 01424 754247**

Email: [info@sjfeistandco.co.uk](mailto:info@sjfeistandco.co.uk)

## Tony Farnham

### Electrical Services

*Domestic & Commercial*

Tel: 01424 893140

Mob: 07966 156463



### The Forge Garage Hooe

*Peter Baker Auto Repairs*

☎ 01424 892296

*MOT testing ~ servicing ~ repairs.*

## MPW Electrical Service

All types of electrical work  
considered

Mike Waghorne

Belle Vue

Standard Hill Close

Ninfield

01424 892663 07703 470042

[Mikewaghorne1@gmail.com](mailto:Mikewaghorne1@gmail.com)

### FITNESS PILATES Conditioning & Toning

Mon 11.00, Thurs 9.15 & 10.30 £6.00p/c

**NINFIELD METHODIST HALL**

All levels welcome.

Bring a Fitness Mat and Water.

Spaces limited to book

**07944 409443**

**Pearl Cheeseman**

**a Fully Qualified Fitness Instructor**

Contemporary & Traditional

## PEBBLESTONE

### KITCHENS

*Fully fitted or supply only*

*Quality kitchens - affordable prices*

Est. 1987

Gavin Holden

☎ **01424 844522**

25 Cooden Sea Road, Little Common

## A.P.S.

### Tree Surgery. Fencing. Landscaping

Fully Insured & Qualified

24 Hour Call Out

### Andy Stephenson

Proprietor

01424 223708

07920 118276

Email: [andy@apstreesurgeryfencing.co.uk](mailto:andy@apstreesurgeryfencing.co.uk)

[www.apstreesurgeryfencing.co.uk](http://www.apstreesurgeryfencing.co.uk)



## NINFIELD

### Lower Street

### Fully Licensed

### Convenience Stores

### News & Magazines

Daily Deliveries Fresh Fruit / Veg & Bread

DVLA, Banking & Currency

**892281 [post@ninfield.com](mailto:post@ninfield.com)**



Hey Pooh?  
Yes Piglet?  
This thing seems to be going  
on forever.  
You mean the pandemic thing?  
Yeah, will it ever end?  
Oh I hope so Piglet.  
I do too, I miss so much.  
What do you miss?  
Hugs Pooh, I miss hugs.  
Yeah, its the one thing  
the humans were  
good at  
I know Piglet,  
I know



**N**INFIELD BONFIRE SOCIETY sadly confirms that there will not be any bonfire celebrations this year, something we are sure, will not surprise you.

We have not been able to fund raise or even have a meeting, so all we can do now, like everyone else, is get through the next few months and hopefully, get back together and plan for 2021.



## NEWS from NINFIELD VILLAGE MEMORIAL HALL

A lot has been going on in the Hall, we are very pleased to say. We are following all of the Government Guidelines with regard to social distancing, maintaining air flow, providing sanitizer and reducing the number of people allowed in the Hall at any one time.

Sadly not all of our regular hirers are able to come back just yet, so at the moment there are no beavers, cubs or scouts, no art group, Horticultural Society or Flower Group. We cannot have any children's or other parties, but we can have small wedding and funeral receptions with conditions, and we can have business, educational and training events, so we have the following regular options for you

Mon	10.00 Movement to Music	1.00 Badminton
Tues	10.00 Line Dancing	
Wed	9.30 Pilates	6.30 Dancersize 8.00 Cardio Conditioning
Thurs	1.00 Line Dancing	
Fri	9.30 Fitness Yoga	6.30 alternate weeks wk1 Burlesque; wk2 ballroom dancing

Take a look at our website [www.ninfieldmemorialhall.co.uk](http://www.ninfieldmemorialhall.co.uk) for more details of who to contact as you will need to book in.

Please remember, things change very quickly and bookings can get cancelled at very short notice.

We continue to hold our monthly market, the third Saturday of the month and are very pleased that we are also now booking tables for our popular Home Made Fayre, which is to take place on Saturday 28<sup>th</sup> November, 10.00 - 3.00. More details will follow next month, but if any one wants to enquire about booking please email [ninfieldmemorialhall@gmail.com](mailto:ninfieldmemorialhall@gmail.com)

The Hall Committee would like to congratulate Natalie and her team for the amazing transformation to the Cottage, which is now up and running with the children from Muddy Boots





**LEGAL KNOWLEDGE SOLICITORS**  
YOUR CONCERNS – OUR COMMITMENT

**IS YOUR HOME YOUR CASTLE?**  
HAVE YOU GOT SOME GOOD PLANS?  
BOUNDARY OR NEIGHBOURS AN ISSUE?  
PERHAPS A CONFIDENTIAL CHAT WITH  
AN EXPERIENCED SOLICITOR ADVOCATE  
IS JUST WHAT YOU NEED!

CALL **FIONA DUFF** on **01424 893210**  
[fiona.duff@kllegal.com](mailto:fiona.duff@kllegal.com)  
[WWW.LEGALKNOWLEDGE.NET](http://WWW.LEGALKNOWLEDGE.NET)

**WILL WRITING SERVICE**

Usual fee £145 + VAT  
Request a Free Wills Brochure

**Lasting Powers of Attorney**  
from £235 + VAT  
01323 460395

**Probate Advice**  
**Probate & Estate Administration**  
01323 768382

**BARRY & CO SOLICITORS**  
Bay Terrace, Pevensey Bay  
[info@barryandco.org](mailto:info@barryandco.org)

**Woodside Acupuncture & Massage Clinic**  
**Now open in Ninfield**

University trained acupuncturist

Angela Wallis has over 10 years experience treating problems including  
Back, neck, knee, shoulder pain, Poor sleep and low energy levels  
Stress, anxiety and depression

01323 819157 [www.woodsideacupuncture.co.uk](http://www.woodsideacupuncture.co.uk)  
Licensed acupuncturist and massage therapist

**CHAMPION FENCING**

**FENCING DECKING & SHEDS**

[mickchampionfencing@gmail.com](mailto:mickchampionfencing@gmail.com)

TEL: 01424893418  
MOB: 07973778308

**Sarahjane Prince Cert. Ed. MSMA.MAR.**

Appointments in Dallington and Heathfield

Sports Massage Zone fact Lift  
Aromatherapy Swedish Massage  
Reflexology Fertility & Delivery Reflexology

**07762576495**

[eastsussexmassage@yahoo.co.uk](mailto:eastsussexmassage@yahoo.co.uk)  
[www.eastsussexmassage.co.uk](http://www.eastsussexmassage.co.uk)

**Windmill Drive**



**Convenience Store, Post Office & Café**  
**1-3 Windmill Drive, Bexhill, TN39 4DG**

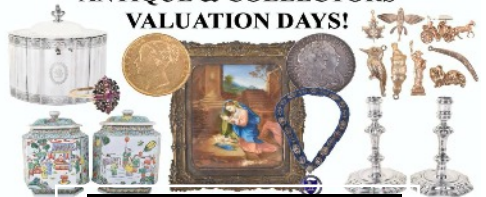
DVLA Services, Banking Services, Foreign Currency,  
Lottery, Stationery & Gifts, Fully Licensed, Photocopies,  
Photo Identification Services, Passport Photos, ATM,  
Seasonal Plants, Daily Needs, Slushies'



**01424.214.253**

[windmilldrivepo@gmail.com](mailto:windmilldrivepo@gmail.com)

**ANTIQUE & COLLECTORS**  
**VALUATION DAYS!**



**Every Other Monday from 13<sup>th</sup> April**  
**At Reid Hall in Boreham Street .**



Please contact us directly for more information,  
Tel: 01233510650 Email: [enquiries@candtauctions.co.uk](mailto:enquiries@candtauctions.co.uk)  
[www.candtauctions.co.uk](http://www.candtauctions.co.uk)



## **Worms Eye View**

October is with us again and as always I feel that winter is nearly here, but it is said “There’s always twenty one fine days in October” So who’s counting?

Besides hearing the different songs of the birds as I walk around the fields regularly and indeed see some of them, my bird table which sits right outside of my kitchen window attracts so many different birds. What a joy it is to watch them. This year I’ve noticed that a host of Sparrows arrive together, at least thirty of them and land in the hedge behind the bird table. Then in a very orderly manner (and keeping their social distance!) the first five descend onto the table, whilst the rest move up waiting their turn. Of course should a Magpie or Woodpecker or even a Blackbird arrive, the Sparrows fly a little way off and wait till the coast is clear. Actually I’m surprised that so many birds visit me with so many berries waiting to be eaten or turned into wine. I reckon they know how much I love to see them.

Several birthdays occur in October and whilst planning for those, I wondered how old the humble earthworms live to. Of course as Charles Darwin rightly pointed out, the worms are among the most important animals in the world. The soils health depends on the aerating effects of their tunnelling and fertility is improved by the burying and recycling of organic matter, but he did not disclose how long they live.

But a little more research disclosed that earthworms emerge small but fully formed and they attain full size in about a year, It is predicted that the average life span under field conditions is four to eight years, whilst those living in gardens only reach one to two years. Now I know!

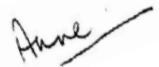
So I’ll finish with a little ditty that I apparently taught my children who then liked to sing about worms:

There’s a worm at the bottom of the garden  
and his name is Wiggly Woo,

There’s a worm at the bottom of the garden  
and all that he can do

Is wiggle all night and wiggle all day,  
Whatever else the people do say,

There’s a worm at the bottom of the garden  
and his name is Wiggly Woo,



I will say no more.

## **HOOE PARISH COUNCIL**

Dick Carey	Chairman	01424 892051	
Pam Dodes	892329	Robert Pilbeam	844365
Peter Hayward	893522	Gary Durman	893007
Jo Dix	892905	Ross Clifton	893206

Parish Clerk Jackie Scarff 07548 528754

Email [hooepc2@btinternet.com](mailto:hooepc2@btinternet.com)

The Parish Council met on 14 th September by Zoom, their third virtual meeting. It was pleasing that even more parishioners dialled in to hear about the work of the Council and to contribute to the debate.

Again the subject of the re opening of the Village Hall was discussed. In light of the new regulations and guidance it was reluctantly agreed that the hall should remain closed for the foreseeable future, probably until the New Year at the earliest. However the need to open at soon as possible was acknowledged so it was decided to reassess the situation at each Parish Council meeting. Everyone looks forward to meeting up again at coffee mornings, History Society meetings, Line Dancing, Band Practice, Table tennis and all the other regular activities which are so sorely missed at present

The Parish Council discussed and acknowledged the fantastic response to the Great British September Clean Up.

When travelling through Hooe during September you will have noticed a band of yellow vested village residents clearing litter from the verges and other areas of the parish. Residents responded to the Great British September Clean up with energy and enthusiasm! Every year people turn out in force to clear our beautiful area of Sussex of the disgusting litter thrown from passing vehicles or dumped on the roadside by thoughtless drivers. Unless one has seen the spoils for oneself one would not believe the variety of objects discarded. Multiple fast food wrappers and soft drink tins, quantities of empty alcohol bottles, car parts including bumpers, batteries and tyres, broken white goods, soiled articles of clothing, half empty tins of paint and other decorating paraphernalia. The list goes on – but these illustrate the mammoth, often dirty and dangerous job our volunteers face every year.

The Council was surprised to learn that a second supply of bags had needed to be ordered such was the demand! So – again – a heartfelt

Thank you from the Parish Council to all who pitched up to help. If only it wasn't necessary!

It was reported that the Jubilee Wood Benches will be placed and ready for us to use in the very near future. These will add hugely to our enjoyment of the maturing Jubilee Wood, offering a peaceful and safe place for us to meet and pass the time of day. It was also agreed at the meeting that the rent for Allotments would stay the same – no increase this year. There has been increased interest in the allotments in the village in line with that experienced nationally. Long may the enthusiasm last.

Sadly, at the end of the meeting the Council accepted the resignation of Councillor Jo Dix as she has now moved to pastures new. Although Jo was a council member for a comparatively short time her enthusiasm was infectious and her involvement second to none. She will be missed, we all wish her well. Obviously in time the council will need to advertise the vacancy created by Jo's departure.

The next meeting of the Council will be on Monday 12 th October at 7.00 pm again by Zoom. If you would like to dial in please contact our Clerk, Jackie  
Pam Doodles  
Vice Chairman

## **BOOK EXCHANGE**

The next session will be on Friday 2nd October in the Methodist Hall, Ninfield. If Covid-19 restrictions allow we will hold further sessions on 6th November and 4<sup>th</sup> December.

Numbers will be limited in the hall to allow for social distancing. All adults, unless exempted for health reasons, must wear a face covering indoors. It is also advisable to bring gloves, although hand sanitiser will be available on entry via the Church Lane entrance and on exit through the Fire Escape door into Downs View.

If you have any queries please contact David Swales on [dj\\_swales@hotmail.com](mailto:dj_swales@hotmail.com) or 07989729123.

# Ninfield Methodist Church

Minister: Reverend Patricia M. Williams BA (Hons)  
15 Holmesdale Road, Bexhill TN39 3QE.. Tel: 01424 733137;  
email: revpmwilliams@yahoo.co.uk  
website: ninfield.hbrmethodistcircuit.online

Our services, in September, on the first and third Sunday monthly went well and we detail below our further events in October.

Our Hall is open again and has been used by the Children's Dance group, our local History group and the Book Lending library. Strict Covid precautions were observed and all is fine which is so encouraging.

Our Church Council didn't meet in September as planned but a new date has been fixed for Monday, 12<sup>th</sup> . October @ 10.00am for just one hour in our Church. All the usual distancing and other precautions to be observed.

Best wishes and enjoy the Harvest Wordsearch.

Sunday Worship Services – October 2020:

Oct 4<sup>th</sup> 110.30 am Harvest Celebrations with John Troughton

Oct 18<sup>th</sup> 10.30 am 'Shoebox 2020' News and Thanksgiving

## Harvest Festival Wordsearch

Can you find the Harvest themed words hidden in the grid?

H	X	W	F	A	R	M	E	R	W	R	T	Y	U	M
A	A	S	D	F	G	H	J	J	K	L	Z	E	X	I
C	O	R	N	D	O	L	L	Y	Q	W	M	E	R	C
M	B	X	V	X	P	O	I	U	Y	O	T	S	A	H
Z	X	C	V	E	B	M	N	B	H	C	X	T	X	A
P	O	I	U	Y	S	R	E	W	Q	D	Q	R	F	E
L	A	M	M	A	S	T	I	D	E	G	S	A	A	L
L	K	H	G	F	D	S	F	A	Z	X	E	C	V	M
C	O	M	B	I	N	E	H	E	F	H	J	T	H	A
H	A	R	V	E	S	T	E	R	S	W	Q	O	H	S
M	N	B	V	C	X	X	Z	T	Z	T	P	R	I	U
C	Y	T	R	S	A	Q	A	W	E	R	I	T	Y	U
R	A	M	A	S	R	E	F	G	H	J	K	V	K	L
O	C	V	O	B	H	N	M	O	O	N	N	M	A	S
P	Z	D	V	W	N	M	R	E	J	X	J	L	S	L

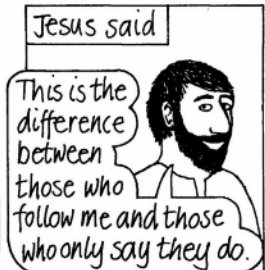
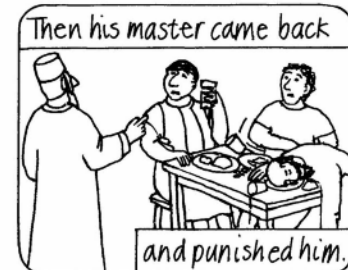
HARVEST FESTIVAL, WHEATSHEAF, CORN DOLLY,  
LAMMASTIDE, MICHAELMAS, COMBINE, HARVESTER,  
FARMER, HOME, MOON, CROP, MOW, TRACTOR

# Bible Bite

A short story from the Bible

It can be read in the Bible in  
Matthew 24:44-51, Luke 12:40-46

Jesus warned his disciples to be always ready for his return at the end of time by telling the story of two servants



# Directory of Groups & Clubs

**NINFIELD ACTION GROUP** Paul Coleshill 893138

**NINFIELD BONFIRE SOCIETY** Secretary Carol Holland 893326

**NINFIELD BOWLS CLUB:** Secretary: Mrs Val Smith, Bexhill 843436

**NINFIELD CARNIVAL & SPORTS ASSOCIATION:**

Samantha Guard, 893699 or 07970 650321

**NINFIELD CRAFTING & KNITTING:** Jane Dommersen 862428

**NINFIELD AND DISTRICT ART SOCIETY:**

Secretary Jennie Harmer 892357 jennieharmer@aol.co.uk

**NINFIELD FLOWER GROUP** Jennifer Collett 892878 ninfieldflowers@gmail.com

**NINFIELD HORTICULTURAL SOCIETY:**

Show Organiser: Rose Franks, Little Gates, Potmans Lane, 892422

**NINFIELD LOCAL HISTORY GROUP**

Membership Sec. Corinne Gibbons 892612 corinnemgibbons@gmail.com

**NINFIELD PLAYGROUP & TODDLERS**

**Preschool:** Liz Walker, 7 Thorne Crescent, Bexhill, TN39 5JH

**Toddlers:** Stacey Boarer, 07967436479

**NINFIELD VILLAGE ALLOTMENTS:** Phil Ringrose 892792

**NINFIELD VILLAGE SOCIETY:** Robin Goldsmith 892778

**1st NINFIELD SCOUT GROUP**

Group Scout Leader: Martin Gausden martin.gausdengslninfield@hotmail.co.uk

Explorer Scout Leader: John Hornby 07783471115

Scout Leader: Glen Harrison 07936552785 ninfieldscouts@gmail.com

Cub Scout leader: Tracey Harrison 07970 359724 ninfieldcubs@gmail.com

Beaver Scout Leader Sandra Creasey 07908 558721 ninfieldkaa@googlemail.com

Group Chairman: Rosemary Cooper

**NINFIELD WORKING MEN'S CLUB:** Julia Hurrell 07508 080608

**DANCE & DRAMA CLUB:** Samantha Guard, 893699 or 07970 650321

**HOOE BELL RINGERS :** Simon Pattisson 845087

**HOOE HISTORY GROUP:** Chairman Heather Sinden 893422

**HOOE LINE DANCE GROUP:** Heather Sinden 893422

**HOOE OPEN GROUP:** Heather Sinden 893422

**HOOE SPORTS CLUB** Chairman: Tim Bryant, 2 Saddlers Cottage, Hooe

**HOOE VILLAGE ALLOTMENTS:** Gary Durman, 893007

**CHRISTIAN WOMEN'S FELLOWSHIP** Pam Doodles, Catslide, Hooe 892329

**SENLAC BELLS** Conductor Alan Collings 893313

**STOOLBALL:** Fixture Sec. Linda Smith, Holmes Farm, Whydown 845163

# PARISH WHO'S WHO

**PRIEST IN CHARGE OF NINFIELD AND HOOE** Rev Paul Frostick,  
18 The Ridings, Bexhill on Sea. East Sussex. TN39 5HU. 01424 218126.

## PARISH CHURCH of St. MARY the VIRGIN, NINFIELD

*Churchwardens:* Mr Phil Ringrose ☎ 892792  
Mrs Catriona Mary Owen ☎ 225421

*Secretary:* Mrs Ann Ringrose

*Treasurer:* Mr Phil Ringrose

## PARISH CHURCH of St. OSWALD, HOOE

*Churchwardens:* Mr Jack Rist ☎892576  
Mrs Janet Pattison ☎845087

*Secretary:* Mr John Fairclough

*Treasurer:* Mrs Cynthia Fairclough

# USEFUL CONTACTS IN THE VILLAGES

**THE PARISH NEWS** Email [ninfieldhooenews@gmail.com](mailto:ninfieldhooenews@gmail.com) ( 893326

## NINFIELD PARISH COUNCIL

Clerk to the Council: Jackie Scarff ( 07725 843505 [clerk@ninfieldpc.co.uk](mailto:clerk@ninfieldpc.co.uk)

## HOOE PARISH COUNCIL

Clerk to the Council Jackie Scarff ( 07775 25843505 [hooepc2@btinternet.com](mailto:hooepc2@btinternet.com)

## READING ROOM

Booking Enquiries: Anne Ringrose ( 892792 email [ringrosep@aol.com](mailto:ringrosep@aol.com)

## MEMORIAL HALL

Booking Secretary: Jane Dommersen 892428 07984 721504  
[ninfieldmemorialhall@gmail.com](mailto:ninfieldmemorialhall@gmail.com)

## HOOE VILLAGE HALL

Booking Secretary: Mrs Sally Durman, 1 Elizabethan Cottages, Hooe ( 893007

## METHODIST CHURCH HALL

Booking Secretary: Mr David Swales ( 892248

## C of E PRIMARY SCHOOL

Head Teacher: Mr. Chris Brown, Church Lane, Ninfield ( 892486

**DOCTORS** The Surgery, High Street, Ninfield ( 892569

**NINFIELD STORES**, Lower Street, Ninfield ( 892281