

THE

PARISH



NEWS

**News from the Churches,
the clubs, groups,
& societies of
Ninfield & Hooe**

September

2020



St MARY's & St OSWALD's

NOTICE BOARD

CHURCH SERVICE TIMES



Date	St. Mary's 9.30 unless stated	St. Oswald's 11.00 unless stated
6 th Sept	Parish Eucharist	Family Service
13 th Sept	Joint Parish Eucharist	No Service
20 th Sept Harvest	Family Eucharist	Parish Eucharist
27 th Sept	Parish Eucharist	Parish Eucharist

Opening times for Private Prayer

St Mary's - Tuesday and Friday 10.00 am to 4.00 pm

St Oswald's - Open daily from 9.00 am to 5.00 pm

APPOINTMENTS All enquiries about Baptism, Marriages or reading of Banns and concerning any other Church matters should be made to The Church Wardens, details on the back page

Any alterations or additions to these service times will be displayed on the church notice boards, the weekly sheet and can be found on the church website along with other church details ~ www.ninfield.org.uk

PARISH NEWS Views expressed in the articles in this magazine are those of the writer and not of the Parish Churches or PCCs unless it so states. This publication is produced and distributed by Members of both Parish Churches.

Dear Friends

“Remember the Sabbath, and keep it holy. Six days you shall labour and do all your work.

But the seventh day is a Sabbath to the Lord your God. “

In recent months there has been a discussion about letting shops open for longer on a Sunday to make up for the trade they have lost during this lockdown. Thank goodness it does look as though it will not happen, not least for those who work in shops! The regular sanctification of a period of time is a core spiritual challenge for us all. It is a ‘space’ in time, a time to ‘be’ at home with the divine; a time to rest and refresh ourselves.

In our bodies, the heart perceptibly rests after each beat and the lungs rest between exhale and inhale. We have lost this essential rhythm, and because we do not rest, we have bypassed the nourishment that rest brings to us. We miss the quiet that would give us wisdom. We miss the joy and love born of simple delight.

The Sabbath is not a date; it is an atmosphere – one of peace, tranquillity, serenity and repose. It is much more than freedom from work, strain or responsibility.

Our relationship with God is important and each of us is one hundred percent responsible for it. With that in mind then perhaps we do need to keep a regular period to be at home with the divine. Do we really set aside a time to rest and refresh ourselves? Do we really become quiet and peaceful within our bodies and our minds?

Have you created a sacred space somewhere at home? Somewhere which is yours, a space with somewhere to sit, (chair, yoga mat, cushion) perhaps a small table with a candle or oil burner or similar and maybe with a book/journal for jotting things down that you want to think about, some artwork or a picture in a book. Creating a sacred space of beauty and nourishment especially for you to ‘rest’ with God is fun and exciting.

When you put this relationship first, you get comfort, guidance and wisdom that is always there for you no matter what else is happening in your life. It is easy to connect with God, and it is important that you do.

You are 100% responsible for your relationship with God and together we can all rise to the spiritual challenge of the Fourth Commandment, (The Sabbath) given to us by God.

Together we become a force of Divine Love carrying our shared purpose to the world – unstoppable. It could be on Sunday's, but it could be anytime!!
Paul

PRAYER

“**Oberammergau** is a small village in Bavaria, Germany. When in 1633 bubonic plague was sweeping through Europe, a man travelling back home to Oberammergau for Christmas brought the plague with him. It spread throughout the village. According to local tradition, a vow was made that if God would spare them, the villagers would perform a play depicting the life and passion of Jesus Christ every ten years. The village was saved from all effects of the plague and the villagers kept their word and first performed the Passion Play in 1634. It has since been performed every ten years.”

Death stalked the streets in the Bavarian village
As the plague brought havoc, death and despair,
Europe was ravaged as millions died,
Neither man or woman or child was spared.
They gathered together in desperation
A vow was given – if they could be saved
A play would be made of the Saviour's life
This was the promise the villagers gave.
Miracle of miracles their village survived,
Not one more death their lives had been saved,
So every ten years this Play is performed
To honour the God who had come to their aid.
Prayers were made and the answer came
A heavenly lesson we too can own,
That He who dwells in ineffable light
Is also the One who brings blessings down.

By Megan Carter

Editors' Note

This is the fourth Parish News we have done on line, will we ever get back to normal? We hope so, but it does depend on the school who do our printing. We are waiting to hear from them as to (a) whether are they able to print because of Lockdown and if so (b) will they have time for us if they are not long back after Lockdown and could be busy catching up with the school's printing. We will have to wait and see, most of our wonderful distributors have said they are happy to deliver as long as we don't have a spike in the virus. So it is a case of 'Watch this Space'.

We have had a lot of compliments about the 'on line' version of the Parish News but it is only getting to a limited number of people. Not everyone has the internet and some who have find it difficult to open or download the document. We have offered to print copies but only a handful of people have asked. Unfortunately the word does not seem to have got around to everyone, so please mention it to your family and friends. So fingers crossed we can go back to the printed version soon.

Nicki & Carol



St Mary's Parish Church

*from the
Parish Records*

1st August 2020 - Marriage of
Nigel William Akehurst and Hannah Louise Mary Schlotter

Closing date for items for the **OCTOBER** edition
of the Parish News is **SUNDAY 13th SEPTEMBER** please send to
ninfieldhooenews@gmail.com

Quinn's Carpentry

Bespoke carpentry to suit your needs

Tom Quinn

*Carpenter and Joiner,
20 years experience*



07515 907210 tomquinn1984@gmail.com

Experienced

HANDYMAN

**Painting, Plumbing, Gardening,
House Maintenance etc.**

Phone RICHARD

01424 272136 /

07980 933766

All jobs considered

Free Estimates

C & C Carpets

CARPETS - VINYL - TILES Etc

SUPPLIED AND FITTED

No Job too small

CLIVE SCOTT

☎01424 893209

BRIAN WICKENS

PAINTERS & DECORATORS

Qualified Tradesman

Free Estimates No VAT

Home: 01424 224328

Mobile: 07803 095061



Hire local portable toilets for all occasions

Please contact us for further details

info@meridiantoilethire.com

We conform to all Health & Safety standards



☎ 01424 892257

info@haffendenroofing.co.uk

www.haffendenroofing.co.uk

Gentle Sole Foot Therapy

Foot Care in Your Own Home

- including routine Diabetic foot and nail care

Julia Stickells

Foot Health Practitioner

SAC Dip FHP-, SAC Dip-F-IPP, MRFHP

Mob: 07512 118650

Web: gentlesole1066.co.uk

Email: gentlesole1066@gmail.com



**EAST SUSSEX
OSTEOPATHS**
TREATING THE WIDER FAMILY

Registered with the General Osteopathic
Council and the Institute of Osteopathy,

East Sussex Osteopaths offer clinic

appointments in Dallington & Heathfield.

To book an appointment, 07762 576 492

www.eastsussex-osteopaths.co.uk

Calls for complementary advice also welcome

OUR SCHOOL

In the words of Alice Cooper: “School’s out for summer”. Everyone is taking a well earned rest after a very strange last few months. The risk assessments have been completed for the grand re-opening in September and the classrooms have been re-organised, cleaned and in some cases even re-decorated.

We think we have everything covered that we know about, but as we have seen things can change overnight: so watch this space.

Having coped with what the Government have thrown at us during this Pandemic, all we have to worry about now is what the Wealden planners throw at us. In the midst of a ‘climate emergency’ someone thinks that it is a good idea to save the Ashdown Forest by increasing the traffic near a school.

As Pink Floyd once said: “All in All you’re just another brick in the wall”.

See you next Term.

Ian Moffat

BOOK EXCHANGE

After two successful open air sessions, the next Book Exchange will be held in the Methodist Hall on Friday 4 th September from 10 – 11.30am. Please note there will be no café facilities. The Church Council has produced detailed Risk Assessments to make our premises as Covid-19 Secure as possible. Numbers in the hall will be restricted to allow for social distancing. All adults, unless exempted for health reasons, must wear a face covering indoors. It is also advisable to bring gloves, although hand sanitiser will be available on entry via the Church Lane entrance and on exit through the Fire Escape door into Downs View.

Returned books are welcome. If you have any queries please contact David Swales on

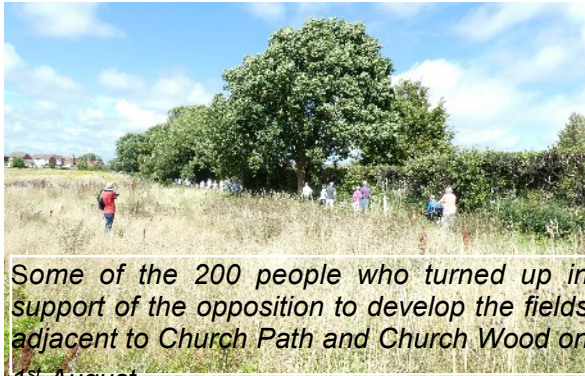
dj_swales@hotmail.com or 07989729123.

NINFIELD VILLAGE SOCIETY

As you probably know much of our voluntary work is managing and looking after Church Wood and it will not come as a surprise then that we are very concerned at the possibility of the current application by Thakeham Housing to put a 70 house urban style estate just to the northern edge of the wood. If approved it will alter so many aspects of our ancient woodland that we know and love.

We in our committee have spent much time discussing reasons we could put in our letter of objection, now sent to the planning department at Wealden District Council, both about the negative impacts to Church Wood and the on the whole village.

I know from my own efforts how difficult and time consuming it is to put a meaningful letter of objection together and



Some of the 200 people who turned up in support of the opposition to develop the fields adjacent to Church Path and Church Wood on

so we say a HUGE THANK YOU to all who have sent in their reasons for objection. A particular thanks also to each of our Parish councillors and our Parish clerk who have done so much work on our behalf to oppose this application.

The parish clock at St. Mary's Church has a fault and is stopped. Arrangements have been made for its repair by the maker's engineer. Interestingly the clock was made by Smiths of Derby and installed in 1898. The company is still in business.

The clock was paid for by public subscription, a list of the main donors hangs in a frame to the side of the clock.

As part of The Great British spring Clean we had arranged a Village Litter Pick. This had to be cancelled because of the coronavirus outbreak and our Village Spring litter pick will now be 12th. September meeting outside Sparke pavilion on the Recreation Ground 10.00am. finishing by 12 noon at the latest. Accompanied children are very welcome. Equipment provided. Social distancing to be observed.

Robin Goldsmith (Secretary)

WANTED

Road Champions to deliver information to residents on behalf of the Parish Council

The Parish Council is embarking on a Neighbourhood Plan to safeguard Ninfield and enable residents to have a say in the future of the village. We are also facing an unprecedented number of Planning Applications due to Wealden Council's decision to withdraw the Local Plan.

We need volunteers to deliver information to residents and occasionally to collect information from residents, in a timely fashion.

If you are willing to volunteer on behalf of your road please email

clerk@ninfieldpc.co.uk

and provide both your name and the name of your road.

The more volunteers, the lighter the burden on each person!

NEIGHBOURHOOD PLAN UPDATE

The photo competition is continuing until 31 st August so please send in your entries.

We need views of the landscape throughout the Parish, village features (buildings, businesses, people) to be used to illustrate the plan. Also, send pictures of problem areas and examples of things we do not want to see repeated! Email pictures to

clerk@ninfieldpc.co.uk

There's a prize for the best under 16 and the best over 16 entrant.

Having a Neighbourhood Development Plan (NDP) in place will be a useful way for our community to keep more control of how our Parish evolves over the next 20 years. We will be able to decide the type of housing that we have (e.g. truly affordable, housing that fits with the rest of the Parish) and the building standards that are applied to all building works. It is also a way for us to protect and extend our green spaces and natural environment (e.g. Church Wood, the Recreation Ground and play areas). We also want to ensure that local businesses thrive and have everything they need to develop.

To prepare the way for a Parish Wide survey we want to know the questions that you want to ask.

The questionnaire below is our starting point, please complete it by Thursday 10th September 2020. If you want more information you can contact the NDP Steering Group at ndp@ninfieldpc.co.uk please tell your friends and family about the plan and encourage them to join in.

<https://www.surveymonkey.co.uk/r/ninfieldplan>

If you know anyone who does not use the internet but wants to take part please ask them to call John Cheshire on 892248..



The Old Byres Catering Company
Theoldbyrescc@gmail.com
07526930646
**CAKES, BAKES AND DELICIOUS
PARTY FOOD**

Sussex Wildlife Control

For a fast, friendly and discreet service

Ants
Bed Bugs
Bird Control
Carpet Beetles
Cockroaches
Fleas
Fly Control
Mice
Moths
Rats
Rabbits
Squirrels
Wasps
Moles & More

Call Now

07505 864 063

Domestic and commercial
pest control

DANCE CLASSES 'MOVEMENT 2 MUSIC'

For the Older & Still Active Person
Every Mondays 10.00 am

LADIES DANCERCISE

Every Tuesday evening 8.00 pm
'BURLESQUE!'

Fortnightly, Friday evenings 7.00 pm
All classes at the MEMORIAL HALL
Fully Qualified Professional Teacher
Call : SAMANTHA GUARD A.I.S.T.D.Hons.
01424 893699 or 07970 650321



HOPE COTTAGE FARM SHOP & TEAROOM

Hooe Road, Ninfield, TN33 9EL, 01424 892342

Breakfasts served all day
Lunches, specials, High Teas, cakes,
desserts
Roasts on a Sunday

Hampers, Gift Ideas & Vouchers

Mon to Sat 9am-5.00pm ~ Sun 10am-4pm

Message from Sami.....

Well, as they say, no news is good news...but in these strange times, no news continues to be sad news! In the 'Biznizz of Show', this last week, Theatres were allowed to re-open, with indoor performances, but socially distanced of course. And, as we all predicted, the prices of the seats have gone up accordingly- to try and cover the losses of running on a 40-60% audience capacity- rumour has it that shows like Hamilton could have been charging £200 a seat...well for a family of 4, plus travel and food costs, that's just a complete No No!. Those venues who are hoping to get going are really finding out that the confidence of their prospective punters is as low as the wages they are earning, consequently not enough revenue is coming in to support the outgoings. It's pretty much a given now that Pantomimes are going to be a rarity this Christmas - there will be no further thoughts of easing the social distancing until mid November at the earliest - way too late for Christmas shows to be put on. Eastbourne Theatres have already announced that they won't be reopening until Spring next year, and tours coming to the Hippodrome have all been cancelled. Some outdoor performances are going ahead in Brighton - with or without the weather! - and the virtual Edinburgh festival is launching as I write...but, it just ain't the same!!!

I was thrilled to have a Zoom meet up with friends here in the UK, and across the world, who all appeared with me in the show A Chorus Line, and, although some of us haven't met up since it closed, nearly 33 years ago, the camaraderie was exactly the same, and many laughs, and a lot of gossip, was shared! Lovely Sue, who played Connie Wong in the show, lives in Melbourne, Australia, and she was saying how dreadfully depressing it is there at the moment. The state of Victoria is back under major lockdown- even stricter than at the beginning of the pandemic, with a Curfew in place from 8pm - 5am.- they have been nicknamed, 'The Leper State' ! They have many hundreds of Covid cases a day, and have been told that it's highly unlikely that they will get to any good level of easing again before the end of the year...Her dance school is closed, has been from March, and won't re-open until the Spring...a year's worth of losses, and a year's worth of missed classes for the students... Thank goodness we, in this country, are working with local lockdowns where necessary - I think that we'd all fall into a complete heap if we had to face what

Melbourne is facing now...let's be thankful for our small mercies!

Locally, the Memorial Hall has opened it's doors to the Rug Sale, the Monthly Market, Knit and Natter, and for my Movement 2 Music and Dancercise classes - all of which can be socially distanced, and Covid controlled. The Hall is maintained and cleaned regularly, and between each user group, and gradually there will be more confidence in getting societies and clubs back. The 2021 diary has dates pencilled in - and I have booked my 'An Evening With...' Show for Saturday 22nd May, in the Hall, with all the bells and whistles as originally planned! Oh PLEASE let this happen!!

So we keep on keeping on, keeping smiling and keeping the hand sanitiser in the pocket...and if you'd like to 'Keep Dancing..' to coin a T.V favourite's phrase, then please call me on 01424 893699, 07970650321, for information on the Dance classes. Movement 2 Music, Mondays 10am-11am, Dancercise, Wednesdays 6.30-7.30pm. Take care, stay safe...



At St. Oswald's Church

VJ day, Saturday 15th August was commemorated with the arrival of the Hooe spitfire and RAF flag

Peter Pattenden and his sister Brenda Dingberg have planted a Silver Birch tree with a Plaque in the grounds of St. Oswald's Church in memory of their father who was a Prisoner of War in Japan for four years



HOOE HISTORY SOCIETY

As we continue to remain vigilant and look out for each other by maintaining sensible precautions, we are continuing to follow the government guidelines, along with the many other local organisations, and remain closed for monthly meetings.

DID YOU KNOW... that Hooe started to run a Village News Sheet in April 1956. This report on its progress was written in the Sussex Agricultural Express in the following September:

"The Hooe Klanger has just completed its first six months of publication - a very successful six months. It is distributed free to every household in the village, and to nearby Russells Green - 160 copies in all - through the efforts of Hooe Entertainment, Welfare and Social Club, better known as Hews Club (Hooe's Club).

It is edited by the Club Committee under the chairmanship Mrs. E. d'Abo. A meeting is held near the end of each month, when the editorial notes are discussed, and the news from each village organisation is received, to be reproduced, as far as possible, in alphabetical order.

Stencils are then cut by typewriter, and the magazine, filling anything up to both sides of three quarto sheets, is printed on a duplicator. A householder's name is written on each copy to assist with delivery. The distribution area is divided into 12 zones, and the magazines delivered by 12 Brownies".

For those of you of a certain age, Mrs. d'Abo mentioned above was the mother of Mike d'Abo who would later become lead singer of "Manfred Mann" in the 1970's and who lived in the village for a short time.

Sadly, the magazine appears to have been fairly short lived. There are a few surviving copies, which help to tell the story of the village, but if anybody has one that we could borrow and scan for our records I would be pleased to hear from you.

peterhayward1@hotmail.co.uk - is my e-mail address or telephone Peter on 893422.

A copy of the Klanger is on the next page, not a brilliant copy but still of interest!

APRIL 1956.

THE HOOE

KLANGER.



This small News Sheet is intended to draw attention to the various aspects of Village activity in Hooe and to give the dates of forthcoming events.

The Parish of Hooe, dating back to the dim ages of antiquity is full of historical interest, and all who live within its boundaries have reason to be proud of these ancient associations. However, we are more concerned with the present, and if contemporary village activities are to flourish, these should receive the publicity that they deserve. Owing to the dispersal of Hooe Village over a large area, it is virtually impossible to achieve this except through the medium of a News Sheet issued without charge to every household. This experimental issue of "THE HOOE KLANGER" is being produced with the intention of finding out whether the work involved in such a production would be justified.

The following is, as far as we know, a comprehensive list of the various Village Organisations, and if they are interested in their activities receiving free publicity they should communicate with the Secretary of NEWSCLUB, Mrs. G. Pont, Orchard House, Hooe. Telephone Minfield 342. Trade advertisements and those of a general nature (i.e. Goods For Sale, Wanted or Exchange etc.) would also be inserted for a small charge.

- | | |
|---|-----------------------------|
| Hooe Village Prize Band. | Parish Church. |
| Boys' Club. | Parish Council. |
| British Legion. | Hooe Primary School. |
| Brownies. | St. John Ambulance Brigade. |
| Civil Defence. | Village Hall Committee. |
| Football Club. | Women's Institute. |
| Newsclub. (Hooe Entertainments, Welfare and Social Club.) | |
| Lower Minfield Chapel. | |
| Mothers' Union. | |

xxx-xxx-xxx-xxx-xxx-xxx

FORTHCOMING EVENTS.

Forms for your diary so far received are:- (See next page)

SCHOOL

Mother to young daughter after first day at school: "Well, dear, what did they teach you today?"

Daughter: "Not much. I've got to go back again tomorrow."

NINFIELD HEALTH AND WELL-BEING GROUP

It is hard to believe that all the things we had established under this umbrella have virtually vanished. Those of us involved in the different activities have enjoyed meeting people from Ninfield and further afield, knowing that we were doing something that helped people meet others, relax with an old musical film, or play shove halfpenny, skittles or snakes and ladders for the first time for many years. The guys at the Men's shed meetings enjoyed putting the world to rights over a cuppa. The ladies at 'knit and natter' enjoyed the natter with perhaps some knitting or similar too! Robin's health walks were very successful- a great chance to enjoy lovely Ninfield safely and in good company. The book exchange cafe has been very popular as an opportunity to get books and socialise.

I am writing this in the past tense, but I hope and trust that these things are temporarily suspended, not gone for ever. The book exchange has happened on the rec without the cafe, but hopefully may be able to fully resume before too long. Those of us in the Health and Well-being group look forward to seeing everything happening again in the future. We look forward to welcoming some of you for the first time. I expect that some activities will be able to resume earlier than others. Look after yourselves until we meet again'.



A Gatekeeper butterfly


Sunset on the field adjacent to upper church path

PARKER & SON

BUILDING, ROOFING & SURVEYING

Building the future and restoring the past since 1929
NEW BUILDS - ALTERATIONS & CONVERSIONS
RESTORATIONS - EXTENSIONS - GROUND WORKS
BATHROOMS & KITCHENS - GARAGES - ROOFING SERVICES
- SURVEYING- LISTED PROPERTIES - COMMERCIAL
01424 892933


Info@parkerandsonconstruction.co.uk
www.parkerandsonconstruction.co.uk



Are You Legal in 2020?

Did You Know? As of January 2020 the regulations surrounding the disposal of rural sewage change. You are now NOT allowed to discharge your septic tank directly into the environment.

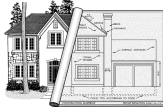
For further information and advice contact the experts:
Email: info@sussexwaterdrainage.com Tel: 01435 830220



ELM ARCHITECTURAL SERVICES

New building ~ Conversions
Extensions ~ Garages
Drawings prepared & submitted to
Local Authority for Planning and/or
Building Regulation approval

Pete Holland
01424 893326
07879 898772



FULLERS ROOFING (Sussex) Ltd

Well Established Ninfield Firm
All types of roofing & building works
Proud Member of Check A Trade.com
01424 810417 or 07812194145

Find us at
www.fullersroofing.co.uk
Email: info@fullersroofing.co.uk

ASTBURY

Windows, Doors
& Conservatories

Tel: 01424 893820
Mobile: 07740 877422

Email: info@astburywindows.com
www.astburywindows.com

Mrs. M. Keeley
M.C.HP. M.A.F.HP

*Foot Health Home Visiting Service,
Nail Cutting, Corns, Calluses*

Tel: 01424 892120



JBN BUILDING

Restore-Build-Maintain

All aspects of building work undertaken, covering all trades.
Free estimates and friendly advice.

Call John **07725752927**

Email: info@jbnbuilding.co.uk www.jbnbuilding.co.uk
Established and based in East Sussex since 2009.

Hydra

Window Cleaning



James Parris hydracleaning@mail.com

07515460008 hydracleaning.co.uk

HOOE

Community Clean up The Great British September Clean up

**Sadly we are unable to meet together this year for
our Annual Community Clean up**

**Friday 11th September-
Sunday 27th September**

**Let's all do our bit to help clean up our village!
Choose your day (s) during this period to help Clean Up**

**As usual litter picks, gloves, bags and high viz jackets
will be available to borrow from the Doodles at Catslide
(892329) & bags from the Durmans at Elizabethan
Cottages (893007)**

**Dick Carey has offered to collect your spoils from the
road side if you tell he the location or please deliver to
Parish Farm (892051) Wealden District Council will
pick up after 27th September**

**Details and further information from Dick, the Doodles
or the Durmans!**

ESSAYS

A second year student explaining to a first year student how to write essays: "When you take stuff from one writer, it's plagiarism, but when you take it from many writers, it's called research."



NINFIELD PARISH PHOTO COMPETITION

The Neighbourhood Development Plan will need lots of photos to help illustrate what local residents value in our environment and community.

We need images of green spaces, woodlands, play areas, sports etc, as well as our beautiful views into and out of the parish. We also want photos of local churches, pubs, shops, businesses, and people at work within the parish.

Please record where your pictures were taken. Photos will feature in the plan for at least a decade and the best image in each category (under 16 and over 16) will win a prize!

Please email your photos to the Parish Clerk: CLERK@NINFIELDPC.CO.UK

Closing date is 31st AUGUST 2020

Good luck and get snapping!



JOHN BIGNELL

Garage Doors

Automation / Repairs / New Doors

01424 210522

johnbignell@btconnect.com

2 Course Lunch

£9.75

Inclusive of Coffee

The Richmond Luncheon Club

Serving every Monday

Please call us for more details

Advance Orders essential

01424 212836

The Richmond Restaurant

The Northern Hotel

Sea Road, Bexhill on Sea - TN40 1JN

BLACKSMITHS INN

To book 893875
Weekly Specials

TAKE-AWAY MENU

Pie, chips & peas

Burger & Chips

Fish, chips & mushy peas

Veg lasagne & garlic bread

All £10. Tues/sat 12-3, 6-9

Roast dinners Sundays 12-6 £10

Desserts Banoffee/Apple pie £3.50

TABLE TENNIS

THURSDAY EVENINGS

7.15 - 8.30

ALL AGES AND ABILITIES

GET ACTIVE

Just turn up

£4

BATTLE SPORTS CENTRE



Gas Boiler Servicing
from £60+VAT

Oil Boiler Servicing
from £80+VAT

Gas Safety Certificate
from £49.50+VAT

Boiler Installation & Servicing

Including landlord gas safety certificates

General Plumbing & Heating Services

Underfloor Heating

Kitchen & Bathroom Installations

Honest, Professional & Affordable



Constructionline

01424 892933



info@pandsp plumbing.co.uk | www.pandsp plumbing.co.uk

Clifford



Upholstery

Professional upholsterer with over 25 year experience in modern and traditional upholstery methods.

Re-upholstery & recovering, Cushion making

Bespoke furniture, Repairs & Modifications

Headboards & plywood curtain pelmets

Upholstery tuition

07943 008 739 /

paul@cliffordupholstery.co.uk

for a quote or to discuss your requirements.

SUSSEX SECRETARIES

DO YOU NEED HELP
FOR YOUR BUSINESS
OR IN YOUR HOME?

Call us to discuss
how we can help

01424 892463 07940 886123

www.sussexsecretaries.co.uk



EMMA TELFORD

Mobile Hairdresser

All hairdressing services in your own home.

Please phone for an appointment or with any enquiries

07812 375158

The Hidden History of God's Providence House – Part Three

So, there is an interesting link between the “Gods Providence is our Inheritance” and the Providence Island Company that would appeal to a Puritan leaning entrepreneur. Not just God Providence but John Dykes profits from his involvement with the Providence Island Company.



The motto thus has a double meaning, for the Dyke family
And what of the second inscription on the frontage?

HERE WE HAVE - 1659 - NO ABIDING PLACE (NOT Here we have 1659 No Abidince)



This has traditionally been taken as “proof” of the date the House was built. But is it? Bear in mind that 1659 was at the end of the Cromwell era. Uncertainty as to whether England would revert to a Monarchy or remain a Republic is hardly the time to build a house, following the English Civil Wars. That would also limit any house building after 1640, so what else could it mean?

Here we have to divert a little: In the Civil War, one of Charles I's most faithful followers was John (Jack) Ashburnham, so obviously a stout Royalist. Ashburnham Place is visible (were it not for Coombe Wood) from Standard Hill House as they both are on hill crests.

So what the occupants of Standard Hill House (presumably ardent Puritans at that time) were saying was “Here we have no Abiding Place (meaning: “No Tolerance” of Catholics). In other words, we are not returning to the Old Religion of Roman Catholicism. As a reprisal, it seems that the Ashburnhams planted sweet chestnuts in a coppice on the edge of their lands, which is how Coombe Woods came to be. Why sweet chestnuts? Well, at the time they were commonly known as “Spanish” chestnuts, and Spanish was synonymous with Catholicism, so in effect a “V” sign in trees!

The more observant of you will also note that the carved lettering is a) unusually spelt, as ABIDINCE (not Abidance) AND that the letters “N” are reversed, as in the Russian alphabet. My guess is that the carpenter tasked with the carving was not fully literate (or had a good lunch) and carved the “N”’s incorrectly. Surprisingly this wasn’t noticed by the occupants either!

In James Rouse’s version, it read “HERE WE HAVE 1659 NO ABIDING PLACE”

and in other early versions it read as “HERE WE HAVE 1659 NO ABIDING”

as if the end word had rotten away or been cut away. That explains the spelling of **ABIDINCE** a little easier to understand, simply changing the “G” to a “CE”. For those of a “purist” taste, it also balances better with 10 letters each side of the date.

Then we come to the final inscription:

An unusual motto “Except the Lord build the House, they labour in vaine that build it.”



One anomaly is that, whilst the carver could manage the cursive lettering of “C”, “D” “P” and “O” for example, when it came to the letter “U” he carved them with straight sides. In medieval times, the letters “U” and “V” were used interchangeably. These letters were not given separate alphabetical listings in English dictionaries until about 1800.

Note also that the lettering of “they” is split over the two lines, a curious feature.

EXCEPT THE LORD BUILD THE HOUSE TH
EY LABOUR IN VAINETHAT BUILD IT

It would actually balance better if it had been carved as “EXCEPT
THE LORD BUILD THE HOUSE
THEY LABOUR IN VAINETHAT BUILD IT

For those of you who know their Bible, this is the first line of Psalm 127

127 ***“Except the Lord build the house, they labour in vain that build it: except the Lord keep the city, the watchman waketh but in vain.”***

So, it might be someone professing strongly of theIR Faith in the Lord, which Puritans were often said to do. Are there clues in the rest of the Psalm (often called “The Builders Psalm” for obvious reasons. There’s also more humour if you follow the second and subsequent verses of Psalm 127:

- 2 It is vain for you to rise up early, to sit up late, to eat the bread of sorrows: for so he giveth his beloved sleep.*
- 3 Lo, children are an heritage of the Lord: and the fruit of the womb is his reward.*
- 4 As arrows are in the hand of a mighty man; so are children of the youth.*
- 5 Happy is the man that hath his quiver full of them: they shall not be ashamed, but they shall speak with the enemies in the gate.*

Another reference to heritage, and also a man is happy if his quiver is full of children.....

Well, we read earlier that Thomas Dyke was born in Ninfield on 10 December 1619, the THIRD son of Thomas Dyke of Horeham.

His father Thomas had married Joan, the coheir of Thomas Walsh of Horeham. Joan was born in 1586 and died just 4 months before her husband in January 1632.

Her husband Thomas also died in 1632 and lies buried in Waldron church, with the following inscription:

“Heere under lieth (expecting the comming of his Saviour) the body of Thomas Dyke Esq: who left behind him three sons, Abraham, Herbert and Thomas, and 4 daughters, Margery, Judith, Elizabeth and Sara: all of which he begatt upon the body of Mrs Joane Walsh, Daughter of Thomas Walsh, Gent, late of Horeham, deceased: Having with her in Marriage, the inheritance of Horeham, he died 5th April 1632. Aged 69.”

His wife, Joan, died before him and lies buried under another stone, in the same church, with this inscription in brass, over her:

“Heere under lieth (expecting the comming of her saviour) the Body of Joane Dyke late wife of Thomas Dyke of Horeham Esq who died Primo Januarii 1632. Aged 46”

Note that the spelling of “Heere” is similar to that of the 1796 record of the House inscription, suggesting a link in dating. One of the sons, Abraham died aged 24 in 1632 and is buried at the feet of his mother. So he had been born in 1608, also possibly in Ninfield.

The Waldron register records the marriage of a **Joan Walsh in 1608, to Mr. Thomas Dyke.**

The inscriptions are also of interest in themselves, as the carving differs on each one, suggesting different dates, but all predate 1796 (especially 1659 obviously!).

The two texts “GODS PROVIDENCE IS MY INHERITANCE” has a similar style of lettering to “UNLESS THE LORD BUILD THE HOUSE THEY LABOUR IN VAIN THAT BUILD IT” and as there is no “U” in the first inscription, they could be contemporaneous.

Now there is also one other feature which has gone totally unnoticed until now.



The porch at Standard Hill House was repaired in 1949. How do we know? Well, there is a casting or carving in the portico and this

clearly shows William of Normandy standing on the hill where his standard of 2 Lions of Normandy is fluttering. He holds an English battle axe! He is addressing his followers ranged below him on the hillside, below which you can see his encampment of mediaeval looking tents near a forest, and a ship approaching Pevensey Bay. The shield on the right bears the dates 1066 and 1949 below it. The name C. C. Garrard or G.G. Garrard is just legible, but I have not found any further information on who he was – yet!!

I hope you have found these snippets of some interest, it certainly surprised me just how much information could be uncovered.

Kevin Regan



Well, thank you Kevin for this great three chapter article, it's inspired me to look back at the information we have on our cottage - not that it's anything like as old or as interesting as Standard Hill House. Maybe some of you are interested in your own properties, if so, your Property Deeds or the two local history groups at Hooe and Ninfield would be a good place to start, or perhaps ask Kevin!

Do any of you have a topic for him to investigate which would be of interest for OUR readers, if so why not ask Kevin for help, please do so through Ninfieldhooenews@gmail.com Carol

Ninfield Parish Council

Your Parish Concillors

Kamala Willaimson	Chair	07933 492265		
			email: cllr.kamalaw.williamson@ninfielddpc.co.uk	
Sam Guard		893699	Sheila Collins	893308
Pam Doodes		892329	Peter Holland	893326
John Cheshire		892248	Jackie Langley	892422
Paul Coleshill		893138	Kaye Crittall	892883

Clerk Jackie Scarff 07725 843505

e-mail – clerk@ninfieldpc.co.uk

You will all be aware by now of the latest planning application for Ninfield to build 70 houses on the field behind Downs View. The Parish Council comments are widely available on social media and our website Click here www.ninfieldpc.co.uk

There are close to 200 objections on the Wealden District Council Website but we would ask anyone who hasn't written yet but is against this proposal to please write to Wealden District Council. You can email planning@wealden.gov.uk quoting WD/2020/1166/MAJ , write to them at Vicarage Lane, Hailsham BN27 2AX or use their website to submit your thoughts. Please send copies of your comments to cllr.ray.cade@wealden.gov.uk who will speak at a planning committee as our ward member representing the feelings of the local people.

Church Woods was gifted to the village about 25 years ago for everyone to enjoy the peace and tranquillity. The ancient wet woodland is a beautiful setting that a local ecologist described as 'A Little Treasure' which would be forever changed by the construction runoff. The little fords have beautifully clear water and there are several protected species of wildlife living there. If this is destroyed it is irreplaceable and no matter what mitigation the developers and Wealden talk about putting in place the new cannot replace what's there.

You may have seen the advertisement, Ninfield Parish Council are looking for a new councillor after Pam Doodes stepping down. We are not losing Pam, all her experience and help over the years as she remains as one of our two District Councillors with Ray being the other. The Parish Council would like to thank Pam for all her help and support over the years and are thankful that we will still represent us as a District Councillor.

If you want to get more involved in the village and are interested in helping with current projects or have ideas for how the village can improve then why not become a councillor. Contact the clerk for more information clerk@ninfieldpc.co.uk it's a rewarding role and you get to know residents that you may not already know.

You may be aware that after more 15 years on the council Kaye Crittall has stepped down as its Chairperson due to work commitments. I'm sure you will all thank her for the years of hard work that she has put in over so many years, despite also working full time. We are very lucky that she is staying on the council and will no doubt be great support for our new Chairperson Kamala Williamson. Kamala has lived in the village for over 30 years and her contact details are at the top of the page should you need to contact her.

All the normal functions of the council are continuing and we will continue to have 'virtual meetings' for the time being as recommended by the National Association of Local Councils. Anybody is welcome to join the meetings and just needs to contact the clerk for a link. We don't normally meeting in August, but look out for the details for the meeting in September.



Going down to Church Wood. Mid-May.

SJFeist

& Co Limited

HEATING & PLUMBING ENGINEERS

Aga/Rayburn Approved
Oil & Gas Boilers Serviced

£100 off New Boiler Installation or

£15 off a service with this advert

CALL: 01424 754247

Email: info@sjfeistandco.co.uk

Tony Farnham

Electrical Services

Domestic & Commercial

Tel: 01424 893140

Mob: 07966 156463



The Forge Garage Hooe

Peter Baker Auto Repairs

☎ 01424 892296

MOT testing ~ servicing ~ repairs.

MPW Electrical Service

All types of electrical work
considered

Mike Waghorne

Belle Vue

Standard Hill Close

Ninfield

01424 892663 07703 470042

Mikewaghorne1@gmail.com

FITNESS PILATES Conditioning & Toning

Mon 11.00, Thurs 9.15 & 10.30 £6.00p/c

NINFIELD METHODIST HALL

All levels welcome.

Bring a Fitness Mat and Water.

Spaces limited to book

07944 409443

Pearl Cheeseman

a Fully Qualified Fitness Instructor

Contemporary & Traditional

PEBBLESTONE

KITCHENS

Fully fitted or supply only

Quality kitchens - affordable prices

Est. 1987

Gavin Holden

☎ **01424 844522**

25 Cooden Sea Road, Little Common

A.P.S.

Tree Surgery. Fencing. Landscaping

Fully Insured & Qualified

24 Hour Call Out

Andy Stephenson

Proprietor

01424 223708

07920 118276

Email: andy@apstreesurgeryfencing.co.uk

www.apstreesurgeryfencing.co.uk



NINFIELD

Lower Street

Fully Licensed

Convenience Stores

News & Magazines

Daily Deliveries Fresh Fruit / Veg & Bread

DVLA, Banking & Currency

892281 post@ninfield.com



NINFIELD VILLAGE MEMORIAL HALL

Is very pleased to announce that

THE VILLAGE MARKET

Will be back from

SATURDAY 19th September

At the usual time

9.30 - 12.00

Following Government guidelines, there will be a one way system in place, so entry via the main doors and exit at the side, and face masks to be worn

So come along and get your
**cakes, fruit and vegetables,
eggs & honey, gifts and crafts**

There will be also be
take-away teas and coffees

We look forward to seeing you there

Political career

American teacher to students: "Be diligent and steadfast, and you will succeed. Take the case of George Washington, our first ever president. Do you remember my telling you of the great difficulty that George Washington had to face? The big problem that could have been the end of his political career?"

"Sure," said a student. "He couldn't tell a lie."

Are politicians the oldest profession?

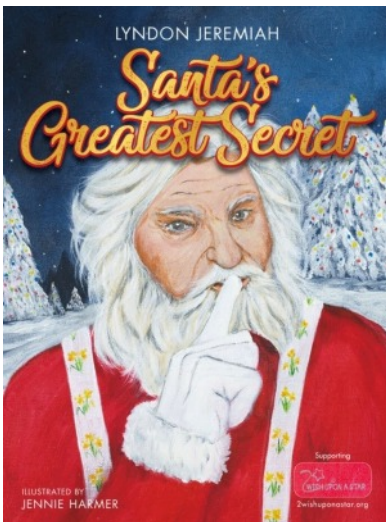
A surgeon, an architect and a politician were arguing as to whose profession was the oldest. Said the surgeon: "Eve was made from Adam's rib, and that surely was a surgical operation."

"Maybe," admitted the architect, "but prior to that, order was created out of chaos, and that was an architectural job."

"But," the politician pointed out in triumph, "somebody had to have created the chaos in the first place!"

It is surprising what goes on in a village, and Ninfield is no exception! Besides the gardening, shopping, working from home one person in the village has been very busy preparing, believe it or not, for Christmas! That is what Jennie Harmer has been doing, illustrating a children's book and this is what, the author, Lyndon Jeremiah says

“They say that any journey, however long, starts with a single step. The first step for me in turning a poem, I wrote 27 years ago, into a children’s storybook was meeting Jennie Harmer. Jennie is an amazing artist, as the first scene in the book shows, but not only that she is proudly Welsh, a wonderful Nana and hilariously funny. All three attributes have made her the perfect partner to take this amazing journey with. Check out Jennie’s work “!



‘Many miles away from here,
In a far and distant place.
Across the Crystal Mountains,
And through the Icy Wastes.



A mile from where your
dreams are,
Turn left at wonderland.
You’ll find a house that no one knows,
And a very special man...’



<https://instagram.com/jennieharmerart?igshid=vwumg6pblhoj>

Facebook: Jennie Harmer Art

Why not join us on our journey by pre ordering your copy of “Santa’s Greatest Secret “ at

www.santasgreatestsecret.com

DUST IF YOU MUST

Dust if you must, but wouldn't it be better
To paint a picture or write a letter,
Bake a cake or plant a seed,
Ponder the difference between want and need?
Dust if you must, but there's not much time,
With rivers to swim and mountains to climb,
Music to hear and books to read,
Friends to cherish and life to lead.
Dust if you must, but the world's out there,
With the sun in your eyes, the wind in your hair,
A flutter of snow, a shower of rain,
This day will not come around again.
Dust if you must, but bear in mind,
Old age will come and it's not kind,
And when you go – and go you must,
You, yourself, will make more dust.

Forever and Anon



LEGAL KNOWLEDGE SOLICITORS
YOUR CONCERNS – OUR COMMITMENT

IS YOUR HOME YOUR CASTLE?
HAVE YOU GOT SOME GOOD PLANS?
BOUNDARY OR NEIGHBOURS AN ISSUE?
PERHAPS A CONFIDENTIAL CHAT WITH
AN EXPERIENCED SOLICITOR ADVOCATE
IS JUST WHAT YOU NEED!

CALL **FIONA DUFF** on **01424 893210**
fiona.duff@lkllegal.com
WWW.LEGALKNOWLEDGE.NET

WILL WRITING SERVICE

Usual fee £145 + VAT
Request a Free Wills Brochure

Lasting Powers of Attorney
from £235 + VAT
01323 460395

Probate Advice
Probate & Estate Administration
01323 768382

BARRY & CO SOLICITORS
Bay Terrace, Pevensey Bay
info@barryandco.org

Woodside Acupuncture & Massage Clinic
Now open in Ninfield

University trained acupuncturist

Angela Wallis has over 10 years experience treating problems including
Back, neck, knee, shoulder pain, Poor sleep and low energy levels
Stress, anxiety and depression

01323 819157 www.woodsideacupuncture.co.uk
Licensed acupuncturist and massage therapist

CHAMPION FENCING

FENCING DECKING & SHEDS

mickchampionfencing@gmail.com

TEL: 01424893418
MOB: 07973778308

Sarahjane Prince Cert. Ed. MSMA.MAR.

Appointments in Dallington and Heathfield

Sports Massage Zone fact Lift
Aromatherapy Swedish Massage
Reflexology Fertility & Delivery Reflexology

07762576495

eastsussexmassage@yahoo.co.uk
www.eastsussexmassage.co.uk

Windmill Drive



Convenience Store, Post Office & Café
1-3 Windmill Drive, Bexhill, TN39 4DG

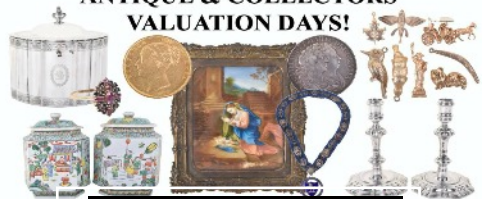
DVLA Services, Banking Services, Foreign Currency,
Lottery, Stationery & Gifts, Fully Licensed, Photocopies,
Photo Identification Services, Passport Photos, ATM,
Seasonal Plants, Daily Needs, Slushies'



01424.214.253

windmilldrivepo@gmail.com

ANTIQUE & COLLECTORS
VALUATION DAYS!



Every Other Monday from 13th April
At Reid Hall in Boreham Street .

Auctioneers
C&T
Valuers

Please contact us directly for more information,
Tel: 01233510650 Email: enquiries@candtauctions.co.uk
www.candtauctions.co.uk

Auctioneers
C&T
Valuers

Worms Eye View

I am pleased that I watched Country File last evening, because a couple of months ago, I told you that I heard a very strange noise late one evening. Fortunately when I asked my son if he had heard the prolonged dry drill which sounded like a piece of machinery, he produced his phone which had recorded the song of the Night Jar, but neither of us had actually seen the bird. Well last night Matt Baker was looking and listening for the Night Jar in one of the open heaths in Surrey. He was lucky, after a long trek he suddenly was aware of the curious song and then caught sight of the elusive Night Jar as he wheeled and twisted after insects. It was nearly dark but we had a good view of the bird, which is unfortunately decreasing in numbers. It really was quite exciting.

There is no shortage of rabbits and some of them are quite bold. Quite often during the day I look out at the bird table and there will be two or three rabbit's trying to find some food under there. However the pheasants seem to know when I top up the bird food and again strut around the table. This can be quite time waster, but at least I do not have to wear a mask watching them.

Rabbits really can do a lot of damage in the garden, and I recently found this list of plants that rabbits do not like, so it's recommended that we should plant the following:

Rosemary, Azalea, Blue Bells, Box, Iris and Tree Peony.

I wonder if that scheme really works and rabbits cease to create havoc.

Now we are in September, I have tried to remember the weather sayings. One is Fair on September 1 st , fair during the whole month. Another is September blows soft till the fruits are in the loft.

September 29 th is Michaelmas Day and was traditionally the day for rent to be paid and goose to be eaten. This was because Elizabeth I was eating goose when she heard about the defeat of the Spanish Armada, and it became tradition to eat goose in celebration.

I hope we can all celebrate the defeat of Covid19 and enjoy September as autumn approaches quite quickly.

Anne

HOOE PARISH COUNCIL

Dick Carey	Chairman	01424 892051	
Pam Dodes	892329	Robert Pilbeam	844365
Peter Hayward	893522	Gary Durman	893007
Jo Dix	892905	Ross Clifton	893206

Parish Clerk Jackie Scarff 07548 528754

Email hooepc2@btinternet.com

Moving quickly and seamlessly into the 21st century Hooe PC has now held 2 virtual meetings by Zoom and is delighted that the second meeting also attracted some residents. In addition to parish councillors Rev Paul Frostick attends almost every Parish Council meeting. We are delighted civic and church are working so closely together in our Parish.

The next meeting of the Council will be on Monday 14 th September. Further details and agenda will be available nearer the date from our Clerk, Jackie Scarff. As usual those who have signed up to the email notification will receive an email. If you haven't signed up and would like to be added to the distribution list please email our Clerk Jackie who will be pleased to add your details

It was with reluctance that the Parish Council made the decision to keep the Sports Pavilion closed for the foreseeable future. Bearing in mind the difficulty with sanitizing the facility between each booking and the time required to keep it closed between bookings so as to conform with Covid Regulations the Council came to the conclusion there was no alternative.

As previously reported the Hooe Village Hall remains closed.

Whilst Hooe was not able to engage in the Annual Community Clean up in the Spring because of Lockdown the decision has been made to take part in The Great British Community Clean Up in September. Unfortunately there will be no gathering of 30 plus residents on one Saturday morning as before, finishing up at The Red Lion PH. This year, for one year only, we hope, we are making equipment available and are asking residents to go out, socially distancing, to pick litter in the village between Friday 11 th September and Sunday 27 th September, the dates of the Official event. Dick Carey has kindly agreed that bags of 'spoils' can be taken to and stored at Parish Farm, or, if preferred give him a call and he will collect from the verge side. I have arranged for Wealden District Council to collect everything up after 27 th September.

Litter picks, gloves, bags, high viz jackets are available from the Dodes at Catslide and the Durmans will have a supply of bags. The Dodes also

have a supply of Posters if you would like to display one at your property, sadly this year flyers will not be delivered to each house as usual Local people are taking advantage of the weather and a little extra time at home by walking our village footpaths. If you are one of those folk who are enjoying the footpaths we would be grateful if you could report to Jackie any problems/ broken stiles etc you may encounter. Our footpaths are a great asset to the village and, where they cross agricultural land, are extremely well maintained by our farming community. In return it is pleasing that almost everyone, with just one or two exceptions, follow the Country code and treat the facility with the utmost respect. A timely reminder – please keep dogs on the lead when crossing agricultural land and pick up dog dirt which can cause great problems to our farmers
Pam Doodles

Vice Chairman Hooe PC

Just some of the rubbish we collected last year



Nicky and Gill taking a well deserved rest following a Morning clearing rubbish thrown from moving cars



Ninfield Methodist Church

Minister: Reverend Patricia M. Williams BA (Hons)
15 Holmesdale Road, Bexhill TN39 3QE.. Tel: 01424 733137;
email: revpmwilliams@yahoo.co.uk
website: ninfield.hbrmethodistcircuit.online

We are encouraged that we had a 'trial' re-opening service on Sunday 9 th August and everything went well. We are not allowed to sing but we enjoyed listening to recorded music. Thanks to Rev. Tricia Williams for leading this get-together.

We now plan to meet for Sunday Worship on the First and Third Sundays monthly during September – November with a view to returning to weekly services in December.

Our Church Council will also meet in September when they will consider any other new ideas for the post-lockdown times.

Our Hall should be available again for users from September but we anticipate that a number of groups may not be ready to return. In addition, as you will anticipate, numbers in our hall will be limited by 'distancing' requirements. Every user will be asked to complete a risk assessment for our agreement. So we proceed slowly but with 'one new step at a time.'

Ninfield Methodist Church is keen to continue to be a key local community resource so we look forward to the easing of restrictions as soon as possible.

We are regularly keeping in touch with our Messy Church families and hope that we may find some way of getting together again.

This month we are welcoming the Reverend Philip Wagstaff , and; his wife Catherine, as a new minister for our area. He will live near Ore village and look after Churches in Hastings and Rye, and one Church in Bexhill. We are pleased that Tricia will continue as our minister for Ninfield, and other local Methodist Churches.

So we are making positive progress and our services in September will be as follows:

Sunday Worship Services – September :

Sep 6th 10.30 am Morning Celebration with Rev. Derek Brice & Topsy
Sep 20th 10.30 am Worship & Praise with James Clephane-Cameron

Bible Bite

A short story from the Bible

It can be read in the Bible in
Matthew 12:1-14, Luke 6:1-11

The Pharisees watched Jesus to see if he broke any of God's laws, or the rules they had made up to stop the laws being broken.

Jesus' disciples were hungry so they picked some wheat from a field as they walked.



This was allowed (Deut 23:25), but it was the Sabbath.

The Pharisees said to Jesus



Why are your disciples harvesting on the Sabbath? That is against the rules!

But King David broke the rules when he ate the bread that was only for the priests*



*1 Sam 21:6

And priests are allowed to work in the temple on the Sabbath*



*Num 28:9

Don't you understand when God says 'Keeping rules doesn't make up for not having kindness'?*



*Hos 6:6

If you understood, you would know my disciples did nothing wrong.



The Pharisees followed Jesus to the meeting place



There was a man with a crippled hand.

The Pharisees wanted to accuse Jesus of breaking rules, so they asked him a trick question.



Is it right to heal someone on the Sabbath?

If your sheep fell into a ditch on the Sabbath you would lift it out.



People are worth far more than sheep, so it is right to do good on the Sabbath



Hold out your hand.



.. and it was healed!

The Pharisees left and made plans.



We will kill him.

Directory of Groups & Clubs

NINFIELD ACTION GROUP Paul Coleshill 893138

NINFIELD BONFIRE SOCIETY Secretary Carol Holland 893326

NINFIELD BOWLS CLUB: Secretary: Mrs Val Smith, Bexhill 843436

NINFIELD CARNIVAL & SPORTS ASSOCIATION:

Samantha Guard, 893699 or 07970 650321

NINFIELD CRAFTING & KNITTING: Jane Dommersen 862428

NINFIELD AND DISTRICT ART SOCIETY:

Secretary Jennie Harmer 892357 jennieharmer@aol.co.uk

NINFIELD FLOWER GROUP Jennifer Collett 892878 ninfieldflowers@gmail.com

NINFIELD HORTICULTURAL SOCIETY:

Show Organiser: Rose Franks, Little Gates, Potmans Lane, 892422

NINFIELD LOCAL HISTORY GROUP

Membership Sec. Corinne Gibbons 892612 corinnemgibbons@gmail.com

NINFIELD PLAYGROUP & TODDLERS

Preschool: Liz Walker, 7 Thorne Crescent, Bexhill, TN39 5JH

Toddlers: Stacey Boarer, 07967436479

NINFIELD VILLAGE ALLOTMENTS: Phil Ringrose 892792

NINFIELD VILLAGE SOCIETY: Robin Goldsmith 892778

1st NINFIELD SCOUT GROUP

Group Scout Leader: Martin Gausden martin.gausdengslninfield@hotmail.co.uk

Explorer Scout Leader: John Hornby 07783471115

Scout Leader: Glen Harrison 07936552785 ninfieldscouts@gmail.com

Cub Scout leader: Tracey Harrison 07970 359724 ninfieldcubs@gmail.com

Beaver Scout Leader Sandra Creasey 07908 558721 ninfieldkaa@googlemail.com

Group Chairman: Rosemary Cooper

NINFIELD WORKING MEN'S CLUB: Julia Hurrell 07508 080608

DANCE & DRAMA CLUB: Samantha Guard, 893699 or 07970 650321

HOE BELL RINGERS : Simon Pattisson 845087

HOE HISTORY GROUP: Chairman Heather Sinden 893422

HOE LINE DANCE GROUP: Heather Sinden 893422

HOE OPEN GROUP: Heather Sinden 893422

HOE SPORTS CLUB Chairman: Tim Bryant, 2 Saddlers Cottage, Hoe

HOE VILLAGE ALLOTMENTS: Gary Durman, 893007

CHRISTIAN WOMEN'S FELLOWSHIP Pam Doodles, Catslide, Hoe 892329

SENLAC BELLS Conductor Alan Collings 893313

STOOLBALL: Fixture Sec. Linda Smith, Holmes Farm, Whydown 845163

PARISH WHO'S WHO

PRIEST IN CHARGE OF NINFIELD AND HOOE Rev Paul Frostick,
18 The Ridings, Bexhill on Sea. East Sussex. TN39 5HU. 01424 218126.

PARISH CHURCH of St. MARY the VIRGIN, NINFIELD

Churchwardens: Mr Phil Ringrose ☎ 892792
Mrs Catriona Mary Owen ☎ 225421

Secretary: Mrs Ann Ringrose

Treasurer: Mr Phil Ringrose

PARISH CHURCH of St. OSWALD, HOOE

Churchwardens: Mr Jack Rist ☎892576
Mrs Janet Pattison ☎845087

Secretary: Mr John Fairclough

Treasurer: Mrs Cynthia Fairclough

USEFUL CONTACTS IN THE VILLAGES

THE PARISH NEWS Email ninfieldhooenews@gmail.com (893326

NINFIELD PARISH COUNCIL

Clerk to the Council: Jackie Scarff (07725 843505 clerk@ninfieldpc.co.uk

HOOE PARISH COUNCIL

Clerk to the Council Jackie Scarff (07775 25843505 hooepc2@btinternet.com

READING ROOM

Booking Enquiries: Anne Ringrose (892792 email ringrosep@aol.com

MEMORIAL HALL

Booking Secretary: Jane Dommersen 892428 07984 721504
ninfieldmemorialhall@gmail.com

HOOE VILLAGE HALL

Booking Secretary: Mrs Sally Durman, 1 Elizabethan Cottages, Hooe (893007

METHODIST CHURCH HALL

Booking Secretary: Mr David Swales (892248

C of E PRIMARY SCHOOL

Head Teacher: Mr. Chris Brown, Church Lane, Ninfield (892486

DOCTORS The Surgery, High Street, Ninfield (892569

NINFIELD STORES, Lower Street, Ninfield (892281