

# The Station Walk

## Jesus remember me

When you are ready, continue along the road, dipping through the wood, passing the old signal box on your right. Let this be a reminder of all the signs that Jesus has laid out before us. Notice the stream on your left. You will soon reach the old station ahead of you. Imagine all the people who have walked this way. The road turns to the right taking you down the hill past some houses. Pause before you join the main road.

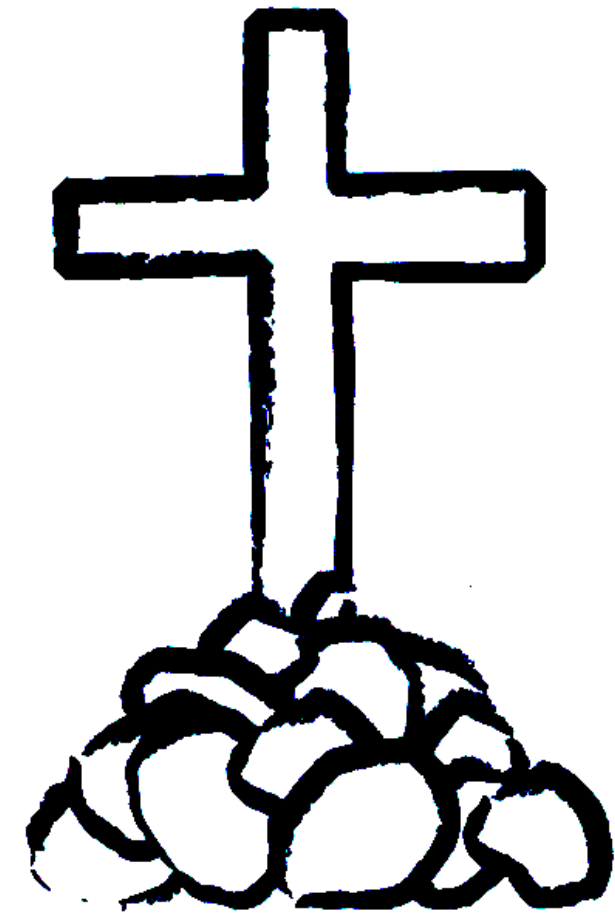
On your left is a small building. Joseph of Arimathea was given permission to take the body of Jesus and wrap it in linen cloths and lay it in a tomb. Then he rolled a large stone across the entrance. When you reach the main road, turn right and walk towards the village, passing farm buildings, perhaps a stable or barn. Continue to the bridge with the sports ground on your left.



As you cross the river and approach the village remember some friends of Jesus returning to their village after the crucifixion. Jesus joined them but they did not know him until they invited him in and he sat down to supper with them. It was then that they recognised him when he broke the bread.

We finish our station walk at the War Memorial cross on the village green.

Jesus remember me when you come into your kingdom.



## Wark

Before beginning, be very aware of traffic approaching on these narrow roads and face the oncoming traffic.

# STATION WALK

We start our Station walk at the War Memorial cross on the Village green in Wark.

Take a moment or two to remember those who gave their lives for us.



the garden of Gethsemane where he prayed that this burden might be taken away from him, but he also prayed "Father, your will be done"

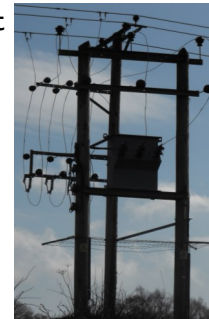
Turn to your right and walk towards the river North Tyne, with the Town Hall on your right. As we approach the bridge, look towards the river. On our left there is a garden. Remember Jesus came to a garden,

Let's cross the bridge and turn to our left. Walking along the riverbank, we come to an old tree leaning into the water, condemned. Remember Jesus was condemned by the Sanhedrin-the Jewish Court.



glance down to the river. We are looking past a thorn bush, towards St Michael's Church. Remember the Roman soldiers made a crown of thorns and roughly pushed it onto Jesus' head.

We turn the corner to the right and walk on until an ugly pylon comes into view. Think about Jesus taking up his cross. He had been whipped and mocked and was then forced to take up his cross.



Shall we continue along the river; bearing right begin to climb up the steep hill; as we arrive at the corner, where there is a turning to the left-stop and

He staggered and fell. Shall we walk with Him, in silence, up the hill and over the bridge; He fell again.



As we approach the brow of the hill, on our right we see a bush; where we think of Simon who was forced by the soldiers to carry the cross for Jesus. Carry on walking 'till you reach the next junction.

The women of Jerusalem comforted Jesus, as we should comfort each other in daily life.

At this point turn to the right and keep on the straight road. Notice the thorn bushes crowding in on both sides reminding us of the jeering crowd lining the route. When you reach the wood on your left, stop, look at the trees and remember how they nailed Jesus to the cross and lifted it up. On either side of him were two criminals-one hurled insults at him-the other said Jesus had done no wrong and asked to be remembered when Jesus came as King. Jesus said to him, "I promise that today you will be in Paradise with me." Here it was that Jesus cried out in a loud voice "Father, into your hands I entrust my spirit" and then he died.

