

## August Services

### Sunday 4 August

9.15am Phillack Holy Communion  
& Baptism  
11am Gwithian Holy Communion  
3pm Gwinear Lammas Services  
9.30am St Elwyn's Sung Eucharist  
9.30am St Erth Service of the Word

### Sunday 11 August

4pm Phillack Taizé with Holy Communion  
11am Gwithian Holy Communion  
11am Gwinear Holy Communion  
9.30am St Elwyn's Eucharist  
9.30am St Erth Holy Communion

### Sunday 18 August

9.15am Phillack Holy Communion  
11am Gwithian Service of the Word  
11am Gwinear Service of the Word  
4pm St Elwyn's Choral Evensong  
9.30am St Erth Holy Communion

### Sunday 25 August

4pm Phillack Café Holy Communion  
11am Gwithian Holy Communion  
11am Gwinear Holy Communion  
9.30am St Elwyn's Eucharist  
9.30am St Erth Holy Communion

### GWITHIAN CHURCH

Open all day, every day.

### PHILLACK CHURCH

Phillack Church is open every day from 9am to 4pm

### GWINEAR CHURCH

Open all day, every day.

### COPPERHOUSE COMMUNITY CAFÉ

Phillack Church Hall.  
All welcome.

### MUSIC AT ST ELWYN'S CHURCH

*See page three for full details*

### GWINEAR EVENTS/NEWS

**Week commencing Monday 29 July** - Gwinear Church footpath from Lychgate to Porch being totally replaced and access to Church unavailable.

**Lammas Service and Tea/Refreshments, Sunday 4th August 3pm, courtesy of Lionel and Jane Pascoe,** Chy-an-Gweal, 19a Hayle Rd, Fraddam, TR27 6EH - ample parking on site.

**Annual Garden Party, Cream Teas, Sales and Raffle, Saturday 17th August 2pm,** courtesy of Charles and Diana Hall,  
The House at Gwinear/the Old Rectory, TR27 5JZ - roadside parking.

### GWITHIAN CHURCH CREAM TEAS

Every Wednesday afternoon in Gwithian Church Hall and outside 2.30 until 5pm.

### GWITHIAN 'LIGHTHOUSE NATURE CHURCH'

Every Friday at 10am for welcome and refreshment and will run until 3pm in the afternoon. The Nature Church will include conservation walks out and about in the mornings followed by lunch and crafts in the afternoon. Each Friday through the school Summer holidays will have a different theme and a local conservation helper in the mornings. The Nature Church will be run by Rev. Michelle and Churchwarden Tracey so please contact either if you are interested. All welcome.

### ST ERTH FILM CLUB

On Saturday 17 August the film will be 'The Great Escaper'. In the summer of 2014, a World War II veteran sneaks out of his care home to attend the 70th anniversary commemoration of the D-Day landings in Normandy. Starring: Michael Caine, Glenda Jackson, John Standing.

7pm for 7.30pm start at St Erth Church Hall. The cost is just £3.00 for members (£6.00 including entry for non-members).

### ST ERTH AFTERNOON TEAS

**Wednesday 14 August 1:30 – 4:30pm**  
and **Monday 26 August 1.30 - 3.30pm**  
at St Erth Church Hall (old school).

Come and join us for coffee, tea, homemade cakes and cream teas.

All proceeds for the St Erth Church Restoration Appeal.



## The Urgency of the Gospel

Mark's gospel is known for its fast pace and sense of urgency to reveal to his community that Jesus is the messiah. The word *eutheos*, translated "immediately" or "at once," occurs over 40 times in Mark's Gospel

*When they got out of the boat, people at once recognized him, and rushed about that whole region and began to bring the sick on mats to wherever they heard he was." Mark 6: 54, 55.*

It is almost 5 months since I arrived and so let us be encouraged to keep up the momentum, energy and enthusiasm and look to the future with hope and confidence.

### Vision Sunday

On Sunday September 29 will be our *Vision Sunday* and we will gather *All -Together* at Gwithian.

As the 6 weeks of the school holidays begin, let us use this time a fresh, to pray, seek God's voice and look for signs of his Kingdom. Where is he leading? Who is he calling? What next?

There is no time to be wasted, much work to be done. We have a gospel to proclaim and reveal Jesus to our communities - let us keep up the PACE !!

Meeting together, worshipping together and praying together builds up our common life

*they immediately they left their nets and followed him. Mark 1. 18*

### MEET & PRAY

Mondays 10.30 -11am ASDA Café.

Arriving from 10am, grab a drink first. All Welcome!!

*With love & Blessings  
Michelle*





# MUSIC AT ST ELWYN'S CHURCH 2024

Thursday Lunchtimes 12.30pm 1.15pm Free admission, retiring collection



August 1	Simone Hillier Soprano
August 8	Heinichen Ensemble Baroque Music
August 15	Alastair Johnson Organ
August 22	Becker-Lessard Guitar Duo
August 29	Charles Martin & Alastair Wood Violin & Piano
September 5	Peter Luing Piano, Selections from Bach's Well Tempered Clavier Book 2
September 12	John Shirley Piano
September 19	Celtic Fiddlers String Ensemble
September 26	Heinichen Ensemble Baroque Music
October 3	Sarah Hanley & Jane Ratcliffe Flute & Piano
October 10	Kenwyn Quartet String Ensemble
October 17	JAAM String Quartet

***For more information contact Terry 07493 453 452***

## Music at St Elwyn's Church 2024

### Saturday Evenings

***August 10 - Opera Night***

***(Rescheduled from June 22)***

Doors open 7pm. Concerts begin 7.30pm. All Welcome

Admission Free

(Suggested minimum donation £5)

interval refreshments will be available



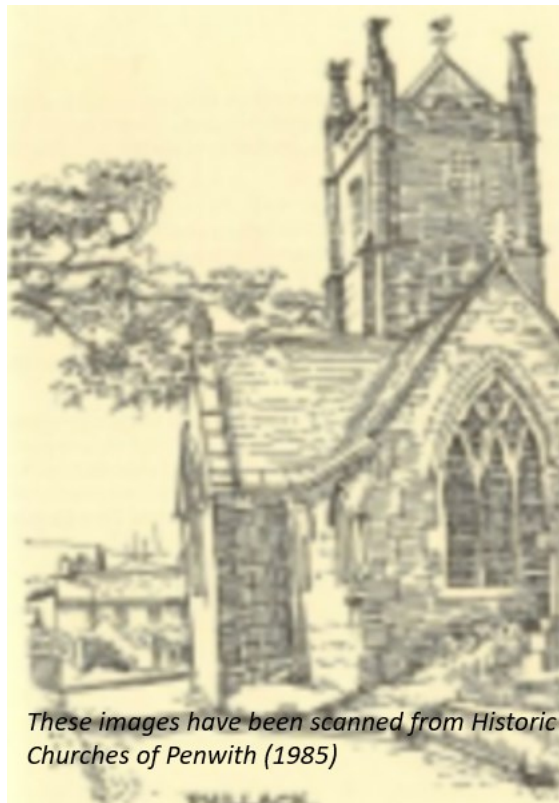


# St Elwyn's Arts and Craft Fayre

17 to 20 July







## Phillack Old Church yard WORKING PARTY

**WE WOULD LOVE YOUR HELP!!!**

**Saturday 10<sup>th</sup> August 9.30 -12.30**

**Saturday 7<sup>th</sup> September 9.30-12.30**

**Just turn up - Please bring own garden tools,  
secateurs, gloves.**

**Refreshments will be provided**

*These images have been scanned from Historic  
Churches of Penwith (1985)*

© The Estate of Henry Conon Williams

Published by St Ives Printing and Publishing, St Ives, Cornwall

## ST ERTH MESSY CHURCH

Our July Messy Church was the usual joint venture between the two local St Erth churches and had a much better than expected attendance of 37 people. All enjoyed games and crafts; a simple Christian message and a cooked meal – all free. The theme and scripture was King Solomon's temple.





CHURCHES TOGETHER IN HAYLE

Present

# COMMUNITY SONGS OF PRAISE

With a Brass Band  
& The One And All Choir

Sunday 4<sup>th</sup> August at 6pm

**AT HAYLE DAY CARE CENTRE**

A collection will be made for  
HAYLE DAY CARE CENTRE



Free Parking



# Bells of Phillack Church



The bells at Phillack have been ringing out across Phillack and Hayle for many years and may they continue to do so.

We have a regular practise every Tuesday evening between 7:30 and 9 o'clock with lots of chatting in between. Ringing for the Sunday services is dependent on the times of the services but we are planning to make this more regular.

You may also hear the bells on a Monday evening when we have regular visitors coming from other local towers to ring "quarter peals" these are methods that last around 45 minutes and with approximately 1250 different changes.

Over the next few month's we have lots of weddings at Phillack, Gwinear and St Erth to ring for. We ring before, up until the bride comes into the church and again after the ceremony as the wedding party leave.

On Thursday 6<sup>th</sup> June at 18:30 we had the privilege of ringing the bells to mark the 80<sup>th</sup> anniversary of the D day landings.

During the summer we are arranging a tower open day at Phillack for anyone that would like to come to the church and visit the tower, see the bells, meet with the ringers and maybe have a go at ringing with the help from the team so please keep an eye out for the dates.

In order to keep the bells ringing out, we need to encourage more people to the world of campanology as we rely on regular visitors from other towers to keep our practise evenings, services and weddings going with a full band of ringers so if anyone is interested or would like some more information please do not hesitate in making contact with me or the church direct.

*Kevin Green*





# Gwithian Lighthouse Nature Church

**Fridays**

**during school holidays in August  
at Gwithian Church Hall  
10 - 3pm (lunch provided)**

10am welcome. Morning trips out locally  
to conservation areas.

Crafts during afternoon sessions.

**ALL WELCOME**

**No need to book -JUST TURN UP!**





# Enjoy a Cornish Cream Tea?

Wednesday afternoons  
at Gwithian Church Hall

2.30pm till 5pm

Cream Teas and light refreshments available

**ALL WELCOME!**





## ST ERTH FILM CLUB

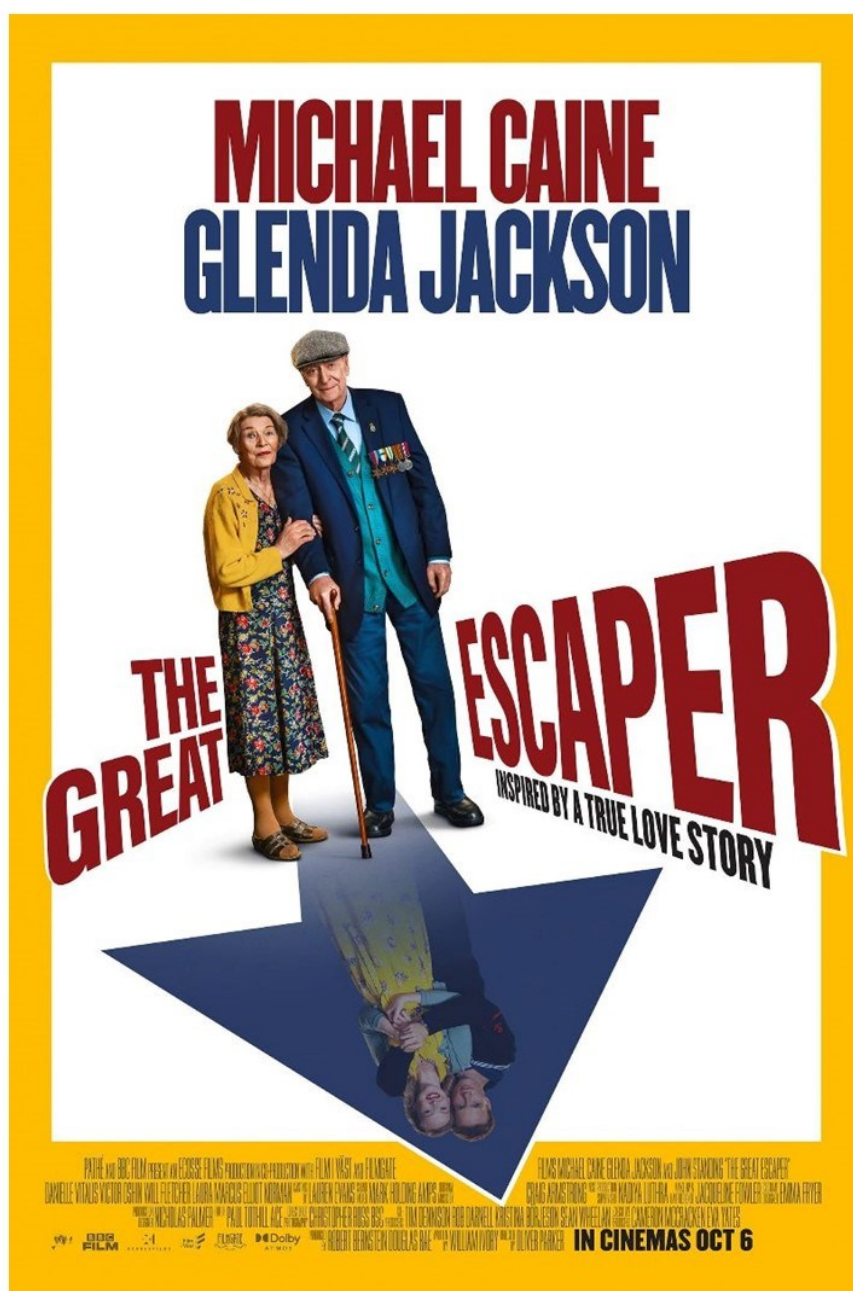
Doors open at 7pm for 7.30pm start at St Erth Church Hall. The cost is just £3.00 for members (£6.00 including entry for non-members).

Please contact Joyce Darvell, Tel: 01736 757169, Email: joycedarvell@btinternet.com if you require more information, or just turn up on the night.

### Saturday 17 August The Great Escaper

In the summer of 2014, a World War II veteran sneaks out of his care home to attend the 70th anniversary commemoration of the D-Day landings in Normandy.

*Starring: Michael Caine, Glenda Jackson, John Standing.*



#### FUTURE FILM NIGHT DATES

17August, 21 September, 19 October, 23 November (revised date), 21 December.



**YOUR PERSONAL INVITATION**

# **GWINEAR CHURCH**

## **GARDEN PARTY**

**SATURDAY 17th August 2024**

**2-5pm in the**

**COURTYARD & GARDENS OF THE  
HOUSE AT GWINEAR**

**(The Old Vicarage TR27 5JZ)**

**Explore the exceptional gardens**

**created by our hosts,**

**Charles & Diana Hall**

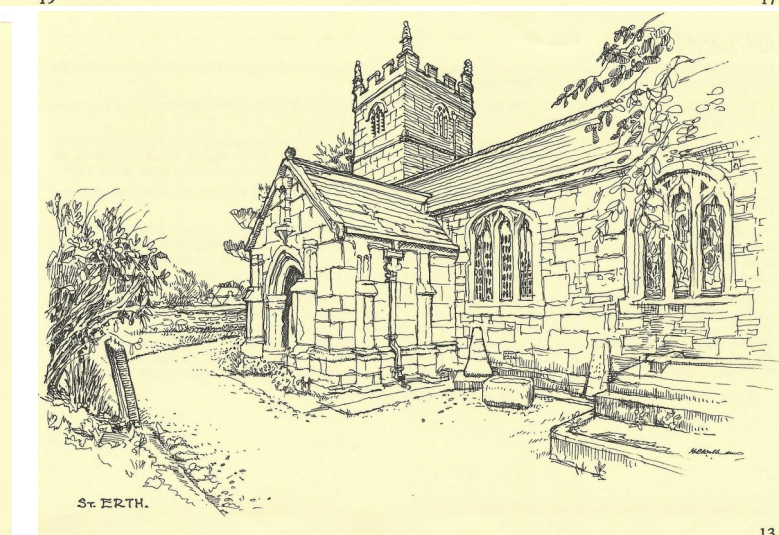
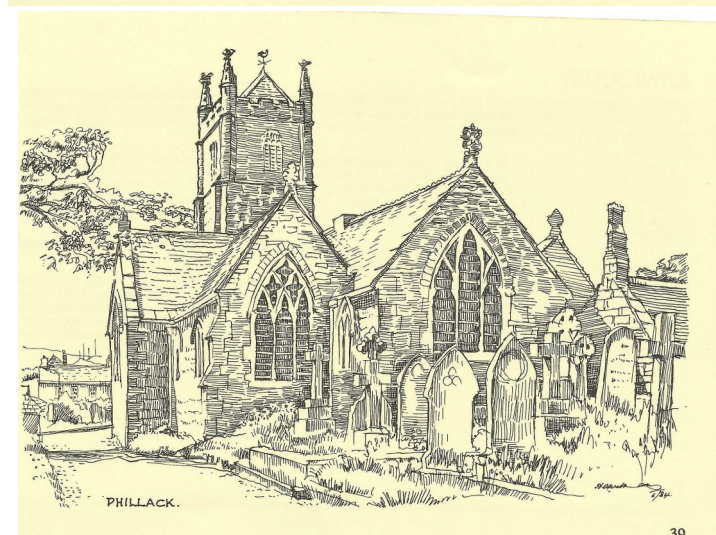
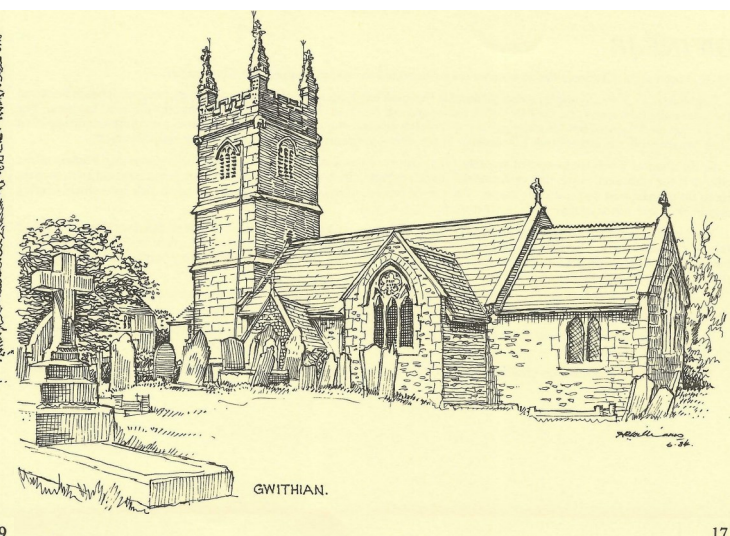
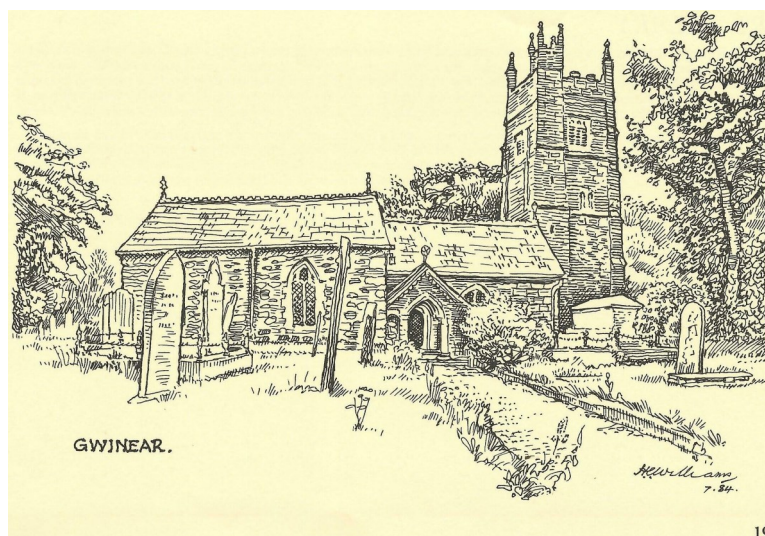
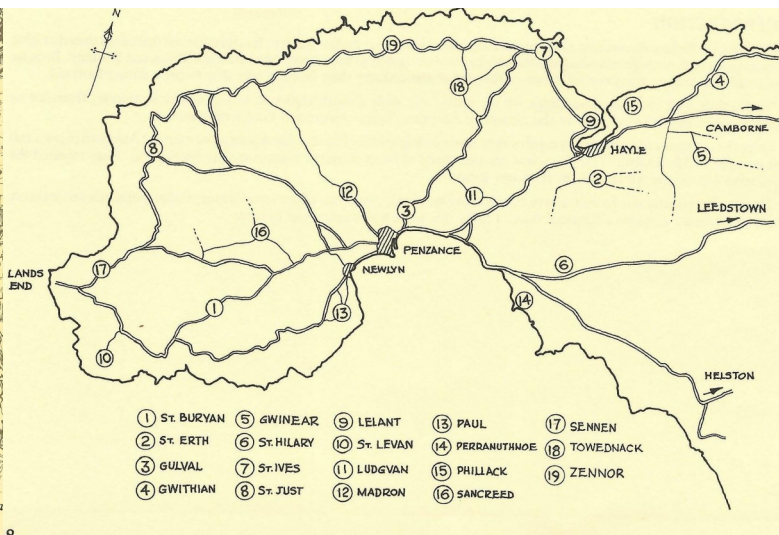
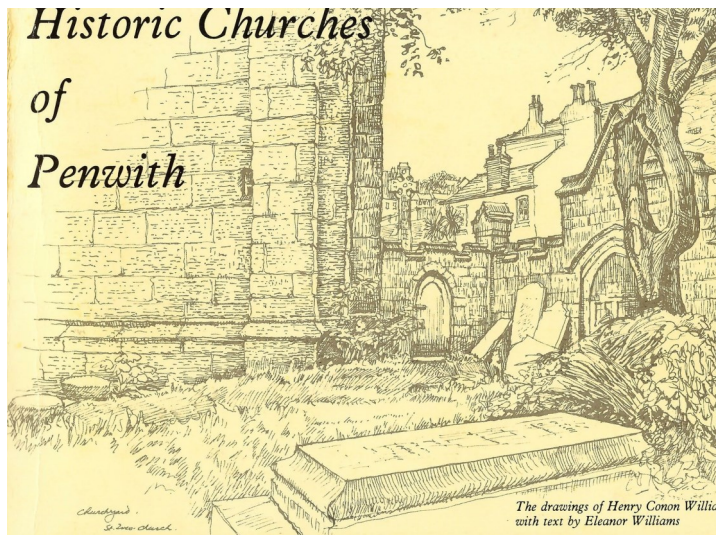
**CREAM TEAS**

**BRING'N'BUY, RAFFLE**

**Donations for Your & Gwinear's  
Iconic, Grade 1 Listed Church, will be  
most gratefully received**



# Historic Churches of Penwith



© The Estate of Henry Conon Williams

Published by St Ives Printing and Publishing, St Ives, Cornwall

These images have been scanned from a booklet supplied by Kathy Tilby.

There are 19 images in total, unfortunately, St Elwyn's Church was not included.

If anyone could produce a drawing of St Elwyn's Church using a similar style that would be very helpful.

Copyright must be acknowledged if reproduced.



ST ERTH CHURCH HALL IS AVAILABLE  
TO HIRE  
Click on QR code for full details



## ST ERTH CHURCH 99 CLUB

### FIRST PRIZE

Bottle of Whisky, Gin, Vodka or £10

### PLUS THREE OTHER PRIZES

Bottle of Wine or a box of Chocolates

Cost is £1 for each draw which takes place every 2 weeks or £26 per annum.

If you would like to support the church by joining the 99 club or would like to give a donation to the church please contact

**Frank Nolan 01736 756179.**



### Session Times

Morning	9.00 to 13.00
Afternoon	13.30 to 17.30
Evening	18.00 to 23.00

Projector and screen	£40
Microphone	£10
Heating is paid separately £1 or £2 coins in the meter	

Booking Secretary:  
Jill Sharpless 01736 756896

### Fees per session

Regular Community users	£15	Committee:	
Community hire	£30	Barbara Read	01736 758233
Corporate/Social hire	£50	Derek Tilby	01736 756805

For more in formation about St Erth Church Hall  
(Old School) or to make a booking,  
click on the QR Code.



**Wednesday 14<sup>th</sup> August**



**1:30 – 4:30pm**

**St Erth Church Hall  
(old school)**

**Come and join us for coffee,  
tea, homemade cakes and  
cream teas.**



All proceeds for the Church Restoration Appeal  
Thank you for your kind support

**MONDAY 26<sup>th</sup> AUGUST**



**1:30pm – 3:30pm**

**St Erth Church Hall  
(old school)**

**COME and join us for coffee,  
tea, homemade cakes  
and cream teas.**



**All proceeds to the Church  
Restoration Fund**

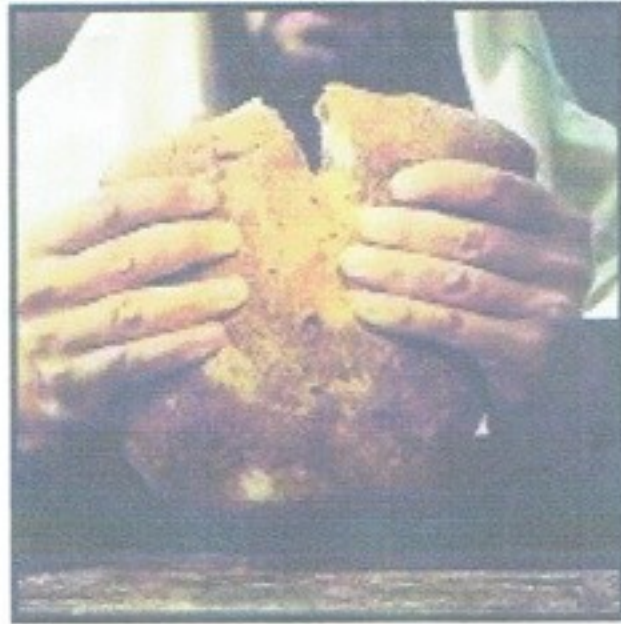
**Thanks for your support**



# **Gwinear Church**

## **Chy-an-Gweal**

### **Fraddam TR27 6EH**



**3pm**  
**Sunday 4th August**

**Lammastide Service**  
**&**  
**Refreshments**

**Courtesy of Lionel and Jane Pascoe**



## Summer Greetings from the Godrevy Churches



### Some of the best memories are made in flip-flops !!

I've only lived in Hayle a few months, but I am convinced that we have one of the most stunning beaches in all of Cornwall! Every time I walk across the Towans, catch sight of the turquoise hue of the Atlantic, the lighthouse on the headland and the 3 mile stretch of golden sands, I find myself taking in slow deep breaths and letting out sighs of wonder.

Yet, apart from the dog walkers most of the folk I meet are visitors. In a previous life, I used to live an hour from London, yet I can count on one hand – how often I made the trip to the city. It's so easy to miss what's under our very nose. Jesus said, *"come with me to a quiet place and I will give you rest."* We all need permission to take a break from the busy- ness that marks so much of our lives, and there is nothing like the sound of the sea, to slow down our heart rate. Kellie Elmore wrote, "some of the best memories are made in flip-flops", or even better in bare feet! I pray that whatever you're planning this summer, whether that's a trip up-country or a staycation, you find time to slip off your shoes, and catch your breath.

Blessings

Rev Michelle

Pioneer Oversight Minister

*The Churches of Phillack with Gwithian, Gwinear, St Erth and Hayle-St Elwyn*  
Mobile: 07387912920. Land line: 01736 759754

### REPAIR CAFE

Repair bikes, small electrical items, clothing & more

Plus knife & tool sharpening service with Crofty Cuts Sharpening

### AND COMMUNITY GET TOGETHER

Join us for coffee, cake and a chat, everyone welcome

**2nd Saturday of every month**  
**3pm - 5pm**

at Hayle Day Centre, Commercial Road





# OUR NEWS

## AUGUST 2024



[SIGN UP TO OUR MAILINGS HERE](#)

## CHURCH-FUNDED RESEARCH ON INEQUALITY OF RURAL LIVING

Research being funded by the Diocese of Truro will focus on the government's official measure for experiences of deprivation in England and whether it is appropriate for people living in rural Cornwall.

The Cornwall Rurality Matters research, which is being carried out by Plymouth Marjon University in Cornwall, will be used to demonstrate the reality of living in Cornwall's rural neighbourhoods. This understanding may contribute to more appropriate measures of rural deprivation by the government in future.

Joel Dougan-Davies, Social Responsibility Officer for the Diocese of Truro, said: "We are very excited to embark upon this project with Marjon University Cornwall. There is great beauty in the rural communities of Cornwall, but unfortunately in many areas there is also profound deprivation.

"Many people around Cornwall are living in great need and it is a vital part of the vision of this diocese to be good news for the most disadvantaged. This vision has many expressions, from debt coaching to afterschool clubs, but through this project we are campaigning for social justice and transformation.

"Those in rural communities can be left behind by the collected statistics that define deprivation, and this has significant ramifications on funding

distribution. By researching the real lived experience of those in need in rural Cornwall, we are looking towards a future with a more just mechanism for the allocation of resources. We have a vision that prioritises all people in need equally, wherever they live, in urban or rural communities."

The aim of the project is to provide evidence for a change in understanding of how place-based deprivation in Cornwall's rural neighbourhoods is experienced by its residents through the development of a robust understanding of the lived experiences of adults in six rural Cornish neighbourhoods identified as being under resourced through socioeconomic deprivation, geographical remoteness, and cultural isolation; articulated through infrastructural challenges of low/seasonal/unemployment, limited access to affordable housing, poor public transport access, limited education and skills facilities, low cultural diversity and opportunity.

Findings will support a suggested definition of rural deprivation in Cornwall.

[READ MORE HERE](#)

## WORKING TOWARDS CARBON NET ZERO CLERGY HOUSES

As part of its commitment to achieving carbon net zero 2030, the Diocese of Truro has been undertaking work on its clergy housing to make the properties more environmentally friendly.

In 2021 none of the diocese's houses had an EPC rating of A, most were rated D. Today there are 13 A-rated houses, and the diocese is on course to reach 20 by the end of the year. The work will continue until all 120 houses have been upgraded.

While some of the improvements have come about through house sales and purchases, most of the changes have involved retro-fitting houses with improved insulation, solar panels, and air-source heat pumps. This is not a cheap process, and the diocese has allocated reserves to improve its housing stock.

Simon Cade, Diocesan Secretary, said: "We manage our houses to provide great homes for clergy and their families, and a good base to work from in ministry. The carbon net zero targets were set by General Synod and we are well on our way towards them, working with our clergy and their families to make sure that the houses continue to be affordable and comfortable."

Mike Sturgess, Chair of the Diocesan Board of Finance, said: "Too many organisations set net zero goals but don't allocate any or sufficient resources to achieving it. As faith organisations, we have the opportunity to play a significant role in fighting the climate crisis, but only if we can demonstrate that we do indeed cherish creation, we are cutting carbon, and we actively speak up about it."



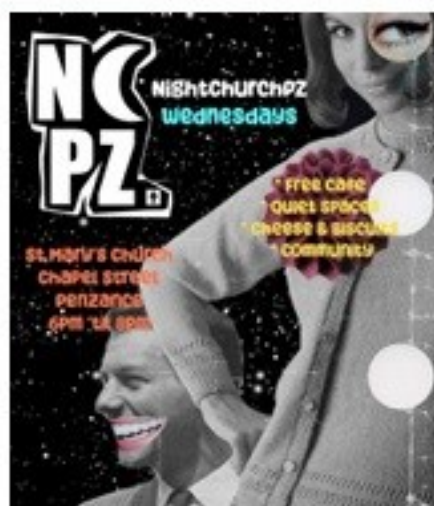
# DOING CHURCH DIFFERENTLY IN PENZANCE WITH NIGHTCHURCH

Since it first opened its doors in November 2023, NightChurchPZ has grown and grown.

The unique community is a mix of people including those living on the streets, people dependent on substances, some who have a travelling or transient lifestyle, older people, people suffering with mental ill health, holiday makers, and most recently, young families. Visitors come from all walks of life and the church is fully inclusive and proud of it.

While it started as a monthly Saturday night venture from 8pm to 3am (now to 1am), the church soon evolved to include NightChurch Wednesdays following the arrival of one particular visitor. Rhys Jones first came to NightChurch in January and immediately impressed those present with his piano playing skills. Learning that Rhys was homeless, NightChurch Coordinator Alice Phoenix felt Rhys should have access to the instrument and so NightChurch Wednesdays, which run from 6pm – 8pm, were born.

The NightChurch has grown into a strong community of people. There is a permanent volunteer team who are on hand for the Wednesdays and a core team plus extras for Saturdays. Alice says what is lovely is that the line between volunteer and visitor is now blurred with many attending regularly and feeling at home.



Safeguarding is something NightChurch takes seriously, and Alice has undertaken safeguarding leadership training with the diocese. Her duties have seen her heavily involved with the safeguarding of adults, working closely with Breadline, the police, and Adult Social Care.

The volunteers have also benefited from training by Breadline with the aim of orientating volunteers to some of the nuances of the causes and reality of homelessness. Alice has plans for another session which would be open to the wider church community.

[READ MORE HERE](#)

## SUNDAY PLUS TRAINING

Sunday Plus, the initial training course for Local Worship Leaders, is a course intended to give people the skills and knowledge to enable them to confidently lead worship.

This eight session course looks at service, structure, prayer, words, music, all age worship and how we can create engaging worship for everyone.

Local Worship Leaders are recommended by their PCC and incumbent using 'LWL Recommendation for Training PCC Form' in the LWL Resources section on the Local Worship Leader page of the diocesan website.

There are two courses starting in September 2024:

Germoe starting Tuesday 3rd at 7pm, held fortnightly until December 10.

Online using Zoom starting Thursday 5th at 7pm, held fortnightly until December 12.

Local Worship Leaders are also required to hold leadership level safeguarding training.

If you have any questions or you like to book a place on either course please contact Lydia Remick, Lay Ministries Development Officer on [lydia.remick@truro.anglican.org](mailto:lydia.remick@truro.anglican.org)

## PARISH GIVING PODCAST

In the latest edition of the CMD Bitesize series, Rebecca Evans, Ministry, Parish Development, and Inclusion Officer, talks to Grant Forrest, CEO of the Parish Giving Scheme. Listen [here](#) or on Spotify - look for Diocese of Truro Podcasts.

## AIR CADET CHAPLAINS SOUGHT FOR FOUR TOWNS ACROSS THE DIOCESE

Chaplains (padres) are being sought for Royal Air Force Air Cadet squadrons in four towns across the diocese.

There are currently vacancies for chaplains or padres in Helston, St Blazey, Truro, and Liskeard, and candidates are now being sought.

Air Cadet Chaplains are part of the Squadron staff and work closely with the Officer in Charge. They are available to provide appropriate pastoral care for all staff and cadets irrespective of religion, belief, or

status. They also provide spiritual and moral guidance, as far as possible, in accordance with the faith tradition of the individual.

Revd Di Burrows, Deputy Wing Chaplain, said: "Being a Chaplain is a fantastic opportunity. Where else as ministers do we get the chance to meet a group of young people and really talk to them about all kinds of subjects. It's really interesting to see how our own views differ from the young generation, and you are also able to help those young people too."

If you are interested in this role and would like to find out more, please contact Di at [revdburrows@gmail.com](mailto:revdburrows@gmail.com)









# ST MARTIN'S CHURCH TO RECEIVE NET ZERO GRANT FUNDING

St Martin's Church in Liskeard is one of more than 100 of the country's highest carbon emitting churches to receive money to fund net zero projects which others can learn from as part of a new multi-million-pound project.

The £5.2M Demonstrator Churches project from the Church of England's Net Zero Programme aims to help 114 churches in 2024 and 2025 pay for items such as solar panels, heat pumps, insulation, secondary glazing, LED lighting and infrared heating systems.

St Martin's Church will receive a Stage One Preparatory grant towards their £1.5m to £2 million project to make their church centre net zero and improve its facilities. The grant includes a package of up to £18,000 in cash and access to in-kind support in the form of independent technical advice and fundraising consultancy support.

Mike Sturgess from St Martin's Church said: "Having reordered our church in 2018, we are now focusing on this exciting and ambitious project to upgrade our church hall complex. Seeking funding for a project of this size is difficult and time consuming, which is why we are delighted to be awarded this stage 1 application, with the hope that it will continue to a stage two application, where we start the first phase of the building work. That work will involve replacing the 160-year-old roof, reusing as many of



the original slates as possible, adding insulation, repairing or replacing the guttering and adding solar panels. Part of this stage of the project will also involve installing a 'bat hotel' and nesting boxes for swifts."

Ben Wood, Cut Carbon Support Officer for the Diocese of Truro, said: "St Martin's will provide a shining example of how an aged building can heat itself effectively using purely electrical power, much of which is renewable energy generated on site, providing a comfortable environment whilst slashing its energy bills."

[READ MORE HERE](#)

## CREATION CARE NETWORK USEFUL LINKS

The next Creation Care Network gathering is on Thursday, September 12 (10am). All are via the [Zoom link](#).

- + CREATION CARE WEB PAGE
- + REGISTER FOR THE KERNOW GREEN CHURCH AWARD
- + BECOME A CREATION CARE CHAMPION
- + SIGN UP TO RECEIVE CREATION CARE UPDATES
- + CREATION CARE FACEBOOK GROUP

**READ THE LATEST CREATION CARE NEWSLETTER HERE**

## ENERGY FOOTPRINT TOOL

There are just a couple more days left to complete the Energy Footprint Tool (EFT).

The deadline is July 31, 2024. Please could you check with your church (e.g. with your parish treasurer or churchwarden) that your EFT has been completed. To date we have only had a 40% return. We are hoping to achieve a 80% return rate in order to make the data viable to use from year to year.

For more information email [rosey.sanders@truro.anglican.org](mailto:rosey.sanders@truro.anglican.org) or call 01872 274351.



## 'CORNWALL MY HOME' SINGER SEEKS CHURCH VENUES

Will Keating is embarking on another tour of historical Cornish venues, notably churches, throughout November/December 2025. There are already lots of venues interested as this will be the third time he has done such a tour, however, he would dearly love to perform in some new churches, reaching out to the rural areas of Cornwall.

Will is endeavouring to reach more people with his music and, given the Christian tone of his songs, he naturally concluded that a collaboration with a church and congregation could be a worthwhile pursuit, whilst potentially raising money for the church as well.

If your church is able to host one of the evenings, please get in contact via email [here](#).

**LISTEN HERE**



**DIOCESE OF TRURO**

**PODCASTS**



## GODREVEY TEAM CONTACTS

### PRIEST IN CHARGE

Rev Michelle Porter-Babbage	01736 759754	Mobile 07387 912920	<a href="mailto:revmichellepb@gmail.com">revmichellepb@gmail.com</a>
TEAM PRIEST	Reverend Patricia Murley	01736 754386	Mobile 07721 795691
ASSISTANT PRIEST	Reverend Clive Morton	01736 603040	<a href="mailto:revdcfmpam@gmail.com">revdcfmpam@gmail.com</a>
TEAM ADMINISTRATOR	Frank Nolan	07919 47355 (Temporary No.)	<a href="mailto:godrevyteamoffice@gmail.com">godrevyteamoffice@gmail.com</a>

Office: 2 to 4pm Most Monday afternoons. Working from home Wednesday two hours, Friday two hours.

### CHURCHWARDENS

Gwinear	Geoff Webster	01736 851173	<a href="mailto:geoff.webster249@btinternet.com">geoff.webster249@btinternet.com</a>
Gwithian	Tracey Worrall	01736 850919	
Phillack	David Philp	07745 873544	<a href="mailto:dphilp1959@aol.com">dphilp1959@aol.com</a>
St Erth	Barbara Read	01736 758233	<a href="mailto:barbararead21@yahoo.com">barbararead21@yahoo.com</a>

### TREASURERS

Gwinear	Margaret Stapleton	01736 850343	<a href="mailto:mstapleton305@gmail.com">mstapleton305@gmail.com</a>
Gwithian	Tracey Worrall	01736 850919	
Phillack	Gwen Pooley	01736 753463	<a href="mailto:gwenpooley70@gmail.com">gwenpooley70@gmail.com</a>
St Elwyn's	Felicity Cork	07795 595956 (Answerphone)	<a href="mailto:labtech50uk@yahoo.co.uk">labtech50uk@yahoo.co.uk</a>
St Erth	Richard Purchase	01736 753628	<a href="mailto:rhpurchase68@gmail.com">rhpurchase68@gmail.com</a>

### TEAM READER

Helen Purchase	01736 753628	<a href="mailto:helen.purchase45@gmail.com">helen.purchase45@gmail.com</a>
----------------	--------------	--

### GODREVEY TEAM MINISTRY HALL BOOKINGS

Gwithian	Tracey Worrall	01736 850919	<a href="mailto:scotchtracey@hotmail.com">scotchtracey@hotmail.com</a>
Phillack	Michelle Porter-Babbage	01736 759754	Mobile 07387 912920 <a href="mailto:revmichellepb@gmail.com">revmichellepb@gmail.com</a>
St Elwyn's	Reverend Clive Morton	01736 603040	<a href="mailto:revdcfmpam@gmail.com">revdcfmpam@gmail.com</a>
St Erth	Jill Sharpless	01736 756896.	Please go to: <a href="https://www.st-erth.co.uk/old-school-room-booking.htm">https://www.st-erth.co.uk/old-school-room-booking.htm</a>

Office Address

**Godrevy Team Ministry**  
**St Erth Church Hall**  
**The Green Lane**  
**St Erth**  
**TR27 6HS**

Cheques to: **Godrevy Team Fees Account**



## SAFEGUARDING

### Diocese of Truro

Andy Earl, Diocesan Safeguarding Adviser,  
Tel: 01872 274351  
Email: [safeguardingqueries@truro.anglican.org](mailto:safeguardingqueries@truro.anglican.org)



## A Prayer for Ukraine

God of peace and justice,  
We pray for the people of Ukraine today.  
We pray for peace and the laying down of weapons.  
We pray for all those who fear for tomorrow,  
that your Spirit of comfort would draw near to them,  
We pray for those with power over war or peace,  
for wisdom, discernment and compassion  
to guide their decisions  
Above all, we pray for all your precious children, at  
risk and that you would hold and protect them.  
We pray in the name of Jesus, the Prince of Peace.  
Amen.

**Archbishop Stephen Cottrell**