






WELCOME TO ST ANDREWS CHURCH

Use this booklet to help you to explore our church. It is packed with ideas for finding out more about the history, art & architecture of this special place.

Activities for younger explorers are marked with a splash  and the harder hotter tasks are marked with a flame 

Do ask for help if needed.

 Hello! I'm Rew* the Rat. How many of me can you find in this booklet?



Wow! Imagine moving a church brick by brick from central London...

I can't believe there were 20,000 pieces!

That's a massive jigsaw puzzle!

It makes my head spin!

ANAGRAMS

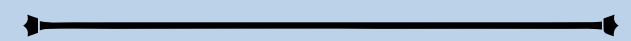


Can you unscramble these tricky St Andrew's & church related words:

SWAN TREDS



CGI HOT



LOFTIER



PIERS



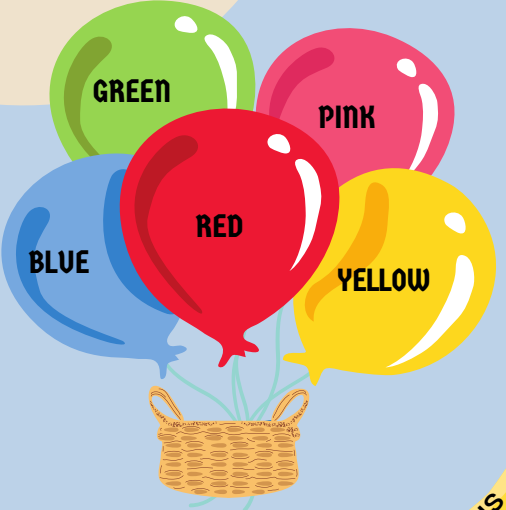
Stuck? Answers below.

*Rew is short for St And-rew





 **I-SPY**



Which window looks the oldest?

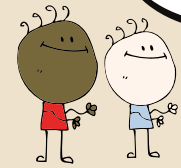
Can you guess?

Find the answer below!

Can you find these in the windows...

- ★ Angels
- ★ A Horse
- ★ A Lamb
- ★ An Alien

Wow! Imagine moving a church brick by brick from central London...



Look up the stained glass window above the entrance. Which of these balloon colours can you spy?

Look out for triangles and other three-sided shapes!

The metal pulpit was designed by the famous artist G E Street in 1865. On the pulpit what is 'growing'?
FLOWERS * LEAVES * BANANAS

Look around for a 'trefoil' shape like this.

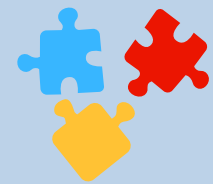
A trefoil is a shape made from THREE linked curves.

Can you spot 3 or more trefoils in the church windows & stone carvings?

I can't believe there were 20,000 pieces!

That's a massive jigsaw puzzle!

It makes my head spin!



NUMBER CRUNCH

The church first opened in 1847 in Central London. What do you get if you add these together?

$$1 + 8 + 4 + 7 = \bigcirc$$

A BRIEF HISTORY

St Andrew's Church was built in 1847 in Central London. It was famous for its music & beautiful interior. When people moved out of Central London to live in less noisy areas, a decision was made to move the whole church to Kingsbury where new suburbs were being built. It has been on Church Lane since 1934.



Work out the missing word from the SIX missing letter clues...

THE THIRD LETTER looks like the symbol of the CROSS

THE FIRST LETTER is the sixth letter in the name of a three-sided shape

THE SIXTH & FINAL LETTER appears twice in the word for this type of building

THE FOURTH LETTER is the first letter in a word for a song that is sung in a church

THE SECOND LETTER looks most like the second digit/number of the year we are in now

THE FIFTH LETTER sounds like another word for me

A row of six empty square boxes, each representing a missing letter in the word. A small grey mouse is perched on the top right corner of the last box.

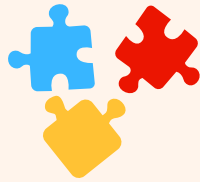
What does this word mean? It is used to describe...

A highly decorative style of architecture with tall spires and pointed windows

Dark themes in books and popular culture eg vampires

People who dress all in black, often with pale make up.

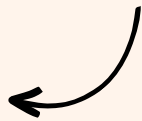
Medieval influences on design and fashion.



FIND & DRAW



Draw me and my friend the dog!
We are carved into the ends of
the wooden pews (the church
seats). Can you find us?



I LOOK
LIKE THIS!

Can you find the Hare and the
Bird too?
Draw them here!

