

A Warm Welcome



A guide to what goes on in the church on
Sundays and throughout the week



Emsworth Methodist Church
& Pastoral Centre



Contacts

Website

Keep up to date with all our activities by checking our website at:
www.emsworthmethodistchurch.org

Church/Pastoral Centre Office

Tel no: 01243 373773
Email: office@emsworthmethodistchurch.org
Address: 19, High Street
Emsworth
Hampshire
PO10 7AQ

Deacon Laura Evans

Tel no: 01243 376786
Email: minister@emsworthmethodistchurch.org

Reverend Bill Stillwell

Tel no: 023 9248 0150

Reverend Andrew de Ville

Tel no: 023 9237 6057

Church Stewards

Email: stewards@emsworthmethodistchurch.org

Pastoral Secretary: Diana Harris

Email: office@emsworthmethodistchurch.org

If you would like more information about other local Methodist Churches or are interested in finding out more about Methodism the following websites are a good place to start:

www.methodist.org.uk

www.esanddcircuit.org.uk

www.southamptonmethodistdistrict.org.uk



Whether this is your first time in this church, or you are a regular visitor, you are most welcome.

We are really glad that you were able to join us today, so make yourself at home and introduce yourself to us.

In this booklet you will find details of many of the activities that take place in the life of the church, as well as information on our Sunday services. If you see something you like the look of please do feel free to come along. You will certainly receive a warm and friendly welcome. Why not pop into the Pastoral Centre one day for a coffee and a chat?



Here at Emsworth Methodist Church & Pastoral Centre we aim to be a serving and worshipping Christian Church in the heart of Emsworth, working closely with other churches and with the local community. As you will see, we work and worship closely alongside the other churches in the area in many different ways.

My contact details are on the inside page, so do phone or email if there is anything you need to discuss or pray about.

We hope you will very soon feel part of our supportive and caring church family as we seek to serve God in this place.

Every blessing

Laura

Deacon Laura Evans
Minister at Emsworth Methodist Church & Pastoral Centre



The Sunday Services

As a church community we engage in a diverse range of worship styles. Although we normally use *Singing the Faith* as our main hymnbook, we have a projection system that allows us to use other material.

The Music Group often contributes to our worship, especially on the first Sunday of the month, and the United Choir regularly enhances our evening services.

As you will see on the following pages, a number of our services are shared with our Anglican friends and take place in St James' or Warblington church. We occasionally worship together with other denominations too. Directions to all Emsworth churches are available if you need them.



In addition to the services listed here there is a mid-week service of Holy Communion in Lent, as well as numerous other services on special occasions throughout the year. Keep an eye on the weekly notices and monthly news sheet which are posted on our website (details on page 2) for more information.



For example, each year Christians Together in Emsworth hold an Easter morning Sunrise Service on the beach nearby, including a bonfire and breakfast afterwards. A brilliant way to celebrate the new beginning that is Easter!

Please do feel free to come along to any or all services, and to ask questions if you would like to know more about what we do.

The Sunday Services

This is our normal pattern of worship. However, we sometimes need to be flexible and change. So please check our weekly notices, found on the website. You'll find printed copies in the church, the atrium and in International Hall.

1st Sunday of the month

- 10am** Worship with the Music Group in the Methodist Church
6.30pm United Holy Communion in St James' Church

2nd Sunday of the month

- 10am** Café Church in the Methodist Church
10am United Service of Holy Communion in St James' Church
6.30pm United Worship in the Methodist Church

3rd Sunday of the month

- 10am** Service of Holy Communion in the Methodist Church
6.30pm United Evensong in St Thomas' Warblington

4th Sunday of the month

- 10am** Methodist Worship in the Methodist Church
6.30pm United Worship in the Methodist Church

5th Sunday in the month

- 10am** Methodist Worship in the Methodist Church
6.30pm Usually an ecumenical service, following a pattern of visiting each of the Emsworth churches in turn for a service in the host church's tradition.

Although we don't have a Junior Church, children of any age are always welcome in our services.

Worshipping Together The Church Family

Traditional Services

For as long as Methodism has existed there has been a strong emphasis on singing! Our more traditional services (3rd, 4th and 5th Sundays) offer an opportunity to sing the old favourites, as well as more contemporary songs. During these services we worship God with a combination of preaching, prayer and music. Our evening services in particular allow time and space for quiet reflection and to rest in God's presence.



Our services are led by a wide range of people including folk from other churches around the Methodist Circuit and further afield, and our friends from other denominations; this enables variety in preaching. There is normally a sermon or address, usually based on the bible passage for the week.

Café Church

Taking place on the second Sunday of each month, this is an interactive, 'café style' service where people of all ages can worship and learn together in a relaxed environment.

Refreshments are available from 9.30am, and the service begins at 10am, lasting for about an hour. If you enjoy an informal service, or are looking to explore the Christian faith for the first time, this may be a good place to start. Why not come along and find out more?

Worship with the Music Group

This morning worship takes place on the first Sunday of the month. Sometimes informal, sometimes traditional, it always includes music and singing. Our Music Group sings and plays a selection of pieces before worship, encouraging a contemplative atmosphere.

Worshipping Together The Church Family

United Services

On the second Sunday of the month we join with our friends at St. James', the local Anglican Church, for a shared act of worship and fellowship. This Holy Communion service includes input from both Methodist and Anglican clergy and lay people.

Likewise, we share all our evening services. Please refer to page 5 for information on the venue for each service. These services vary greatly in style, often taking a traditional form, such as Evensong in the ancient Church at Warblington, but also including Celtic or Taizé-style worship, and services of quiet reflection.

Keep an eye on the Sunday notices for more information.



Holy Communion

There is usually a service of Holy Communion on the 3rd Sunday morning of the month. In line with Methodist teaching, all who wish to receive Holy Communion are welcome. There is no lower age limit (all children are welcome) and a person does not need to have been confirmed.

If you do not wish to receive Holy Communion and would prefer a blessing for yourself or a child in your care, then come to the rail but keep your hands by your sides, and the Minister will bless you.

If you are unable to walk to the rail please do not worry. Just let the Steward know (the person who is inviting people to move forward) and the Minister will bring the bread and wine to you in your seat.

The second Sunday morning service at St. James' is also a service of Holy Communion, as are some evening services. Please check the notices for details.

On Christmas Eve our 'Midnight' service of Holy Communion is at 9pm!

The Pastoral Centre

Located in the Methodist Church building in the Square, and supported by all the churches in Emsworth, the Centre provides a comfortable, informal environment to relax and meet friends. Our aim is to offer welcome, friendship and refreshment to everyone.

A free book is available, entitled 'The Centre in the Square', which chronicles the fascinating history of the Pastoral Centre.

Our normal opening hours are:

Monday – Friday

10am – 4pm

Saturday

10am – 12noon

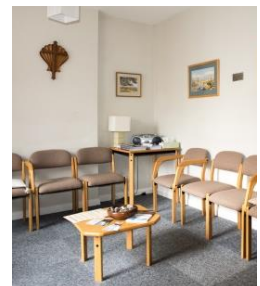


Tea, coffee, biscuits and a selection of reasonably-priced snacks are always available. Additionally, on Tuesdays we offer Ploughmans lunches, and on Thursdays a range of filled rolls and sandwiches. On Fridays, between 10.30am – 1pm, we offer bacon butties cooked to order.

On Monday, Tuesday and Thursday mornings our Pastoral Assistants are there to chat informally with visitors. Deacon Laura Evans is often present, and appointments can be made if she is unavailable when you call. Mandy, the Pastoral Centre Manager, is available to listen and pray. Coffee Bar volunteers are also available to listen and chat.

The Quiet Room is a peaceful space if you wish for a time of private quiet reflection.

There is a small prayer station in front of the Communion Table in the Pastoral Centre.



The Centre is staffed by volunteers from all the local churches and the community. Volunteers work in the coffee bar, and prepare and serve snacks. If you are interested in becoming a volunteer, please contact the Pastoral Centre Manager on 01243 373773 or pop in for a chat.

Our premises are used by many community groups and can be hired by contacting bookings@emsworthmethodistchurch.org

The Pastoral Centre

There are a number of activities and events throughout the week, to which all are welcome.

For further details, please see the weekly 'What's On' leaflet to be found on the tables, or contact Mandy on 01243 373773.

Activity Afternoons

These are held in International Hall at 2pm every Tuesday. Various activities are offered, including board games, crafts, music, regular knitting sessions, reminiscence afternoons and always the opportunity to chat with friends.

A programme is available in the church or from Mandy.



Cake Stalls

Throughout the year we hold occasional cake stalls to raise money for various charities including MacMillan Cancer Support and Action for Children. New bakers (as well as buyers!) are always welcome. Keep an eye on the notice boards for details of the next sale.



Faith in Film

On the last Friday of each month we show a film in the Pastoral Centre at 1.30pm. Unfortunately the terms of our licence prevent us from widely advertising the film titles, so look out for more information in 'What's On' and on the notice boards. You can be sure that films will be suitable for children.

Alongside the film there are usually 'Points to Ponder' – a few brief thoughts on the film for you to take away and think about. No charge; popcorn provided!

Exercise Classes

We host a number of sessions for both standing and seated exercises. There is a small charge for these classes and all are welcome.

Ad Hoc Events

There are a great many occasional or one-off events that also take place in the life of our community in addition to our regular activities. Christmas Carols and mince pies, Christmas Tea, Volunteers' Tea Party, Red Nose Day events to name but a few. In true Pastoral Centre tradition most of these occasions involve food!

We are a Fairtrade Church

We have actively supported Fairtrade, especially through Traidcraft, since 1983. We were among the earliest churches in the country to register as a Fairtrade church, back in the summer of 2004. Church Council agreed then to three ongoing commitments:



- To use Fairtrade tea and coffee after services and in all meetings for which we have responsibility
- To use other Fairtrade products such as sugar and biscuits
- To promote Fairtrade during Fairtrade Fortnight and during the year through events, worship and other activities whenever possible

The church has continued to support Fairtrade consistently since then.

All the tea, coffee, hot chocolate and sugar served here is fairly traded, as are some of the snacks, and we promote the range of products more widely through the monthly Traidcraft stall (after our morning service on the first Sunday of each month).

Catalogues advertising a variety of goods are available on the noticeboard by the coffee bar, where orders can also be left.



Caring for each other

The Prayer Chain

Sometimes we all need to know that there is someone praying for us. The Prayer Chain is a small group of people you can contact quickly if you or anyone you know is in need of prayer.

Please contact Deacon Laura (see page 2).

Be assured that Laura will keep confidence unless you specifically say that you wish the Prayer Chain to be notified.



Pastoral Care

As part of our call to 'watch over one another in love' the Methodist Church operates a pastoral system, intended to ensure that all members of the church community receive the care and support they need.

A Pastoral Carer has responsibility for a small group of people, keeping in touch with them through regular contact. This ensures that anyone who needs support, or who has a celebration to share, is referred to the Minister or another appropriate person.

Pastoral Care can be offered in many different ways: some Pastoral Carers bring their group together from time to time for fellowship, discussion or a friendly cup of tea; some visit one another's homes, or share a meal. Others keep in touch by phone or letter, or chatting in church on Sundays.

If you would like more information, please contact our Pastoral Secretary Diana Harris on office@emsworthmethodistchurch.org

Exploring our Faith

Each of these groups is welcoming and offers a great opportunity to explore faith with friends. Most have programmes which include social get-togethers, so if you are nervous about coming for the first time why not come to one of these and meet people in an informal atmosphere over a cup of tea?

Bible Discussion Group

Meeting on the third Tuesday of each month at 10am in the Wesley Room, this friendly and open group aims to study the passage used at the most recent Café Church in greater depth. You would be most welcome to join us whether or not you have attended the Café Church service.



For more information contact Deacon Laura on 01243 376786.

The Music Group

This is a group of instrumental players and singers who enjoy making music together. The group provides music and leads the singing for Morning Worship on the first Sunday of the month. Practices are held after Morning Worship on the third and fourth Sundays in International Hall.

New members can be sure of a warm welcome.

United Choir

This ecumenical choir meets fortnightly in the Methodist Church on Mondays at 7.30pm. The Choir usually sings at St James' Church on the second Sunday morning of each month, and in the Methodist Church at two Sunday evening services per month. An augmented United Choir sings at St James' on Good Friday afternoon.



All singers are welcome.

For more information, please contact Sue D.
on office@emsworthmethodistchurch.org

Exploring our Faith

Ladies Group

The Ladies Group meets in International Hall on the second and fourth Wednesdays of the month from September to December and January to May. Meetings start at 7.30pm and finish around 9pm with light refreshments and time for a social chat.

We extend a warm welcome to ladies from all denominations and the community, and at present our numbers remain constant at about thirty. Our varied programme draws on local speakers and others from further afield, and regularly includes an informal Members' Evening.

We plan various different kinds of activities for the summer months so that we can keep contact with the membership whilst the weather is hopefully in our favour!

Please come and try us out: you can be sure of a very warm welcome.

For more information see the Ladies Group programme on the church website or contact Mrs Judy Emerson on office@emsworthmethodistchurch.org

The Wesley Guild

The Guild meets on the first and third Thursday of the month at 7.30pm from October until the end of May in International Hall. There is a wide range of speakers and themes including devotional evenings, explorations of Christian Service, local interest and members' evenings. A programme is available in church and on the church website.

For further details please contact Gill Cooper on office@emsworthmethodistchurch.org

Lent Groups

During Lent special groups may meet to study, discuss, pray, reflect and sing. These might include ecumenical explorations of faith following a course of study such as a York Course, or Compass Course.

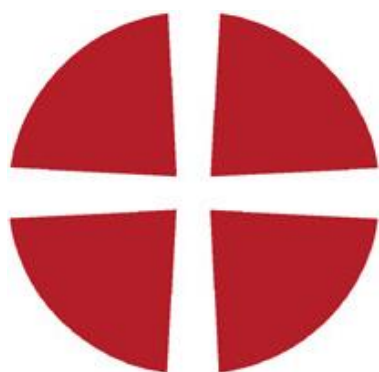
During Lent the augmented **United Choir** is open to all who wish to sing music for Passiontide. For six weeks we work towards a performance of a requiem mass or similar choral work on Good Friday in St James' Church. The rehearsals are fun, there are no auditions and everyone is welcome.

Further information about Lent will be available nearer the time in church and in the notices, or please ask Deacon Laura for details.

What is Methodism?

All of the Methodist Churches in Great Britain are linked together to form a national body that we call the 'Connexion'. Churches are grouped into Circuits which, in turn, join up to form Districts.

Emsworth Methodist Church, along with twenty-two other churches, forms the East Solent and Downs Circuit. This Circuit is part of the Southampton District. Details of the Circuit and District websites can be found on page 2.



This is the main logo of the Methodist Church. It reflects our deepest beliefs.

The circle represents the world. It is coloured red to remind us that, through the power of the Holy Spirit, all people can know the love of God.

The cross is white (like the background), celebrating the joy of the resurrection. You will see that there is no visible point at which the arms of the cross end, likewise there are no limits to God's grace.

John Wesley, the founder of Methodism, was passionate about social justice. He preached the gospel to those whom others would rather forget. Early Methodists campaigned against slavery and were in the forefront of the provision of education and healthcare for the masses.

Today the Methodist Church continues this commitment to social justice by campaigning against racism, sexism and unethical investments and trading practices. In doing so, we live out our calling to love God and our neighbour.

As part of our call to 'watch over one another in love' each Methodist Church operates a pastoral system, intended to ensure that each member receives the care and support they need as part of the community.

If you would like some more information about how the pastoral system operates here in Emsworth please contact Diana Harris, whose details you will find on page 2.


The Methodist Church



Activity Afternoon



The Jigsaw Table



Pancake Day!



Easter Flowers

Christians Together Foodbank Collection



Emsworth Methodist Church & Pastoral Centre

Mission Statement

To be a serving and worshipping Christian Church in the heart of Emsworth, working closely with other churches and with the local community.

To achieve our mission, we will:

Provide regular opportunities for worship and prayer, and explore new and different ways of worshipping

Provide opportunities for people to explore the Christian faith and to enter into an experience that meets their needs

Express the Christian gospel's servant role through the work of the Pastoral Centre, offering all users welcome, friendship and refreshment without prejudice or expectation

Explore new community links and widen our network of volunteers

Provide well maintained premises, ensuring maximum flexibility of use, and make multifunctional use of the worship area, particularly as a Pastoral Centre

Be a member of Christians Together in Emsworth, promoting ecumenical activity and seeking to strengthen our links with the other Emsworth churches

Provide an enriching pastoral network for members and friends, and develop the provision of similar support for users of the Pastoral Centre

Encourage wider community use of our premises

Support Christian mission both at home and overseas

Express Christian social responsibility in response to human need

Promote both education and support for the fight against world poverty