

Details of Faculty DAC Advice ref
2021-062401

- The following works or other proposals were considered:
- (1) Remove a diseased ash tree and coppice a sycamore and a lime tree on north side of the church; plant three fruit trees beside the path from steps in the southeast corner of churchyard; remove two existing tree stumps in north side of churchyard.
 - (2) Introduce benches along the south wall of the church (three along wall, one in Garden of Remembrance) and two along path from steps in the southeast corner, all to be affixed to existing stone flags or set on new flags; also to replace current benches in poor condition.
 - (3) Introduce a low post and chain-link fence around the edge of the Garden of Remembrance and provide an extension to the stone slab paving to create a path to the newly introduced bench.
 - (4) Repair light above entrance gate.
 - (5) Extend cobblestone edging along the south side of church to replace the cracked and broken tile finish in this area; refinishing of other path areas.

Tree removal

- (1) Remove a diseased ash tree and coppice a sycamore and a lime tree on north side of the church;
- remove two existing tree stumps in north side of churchyard.



Tree Removal

- Photo showing the trees today



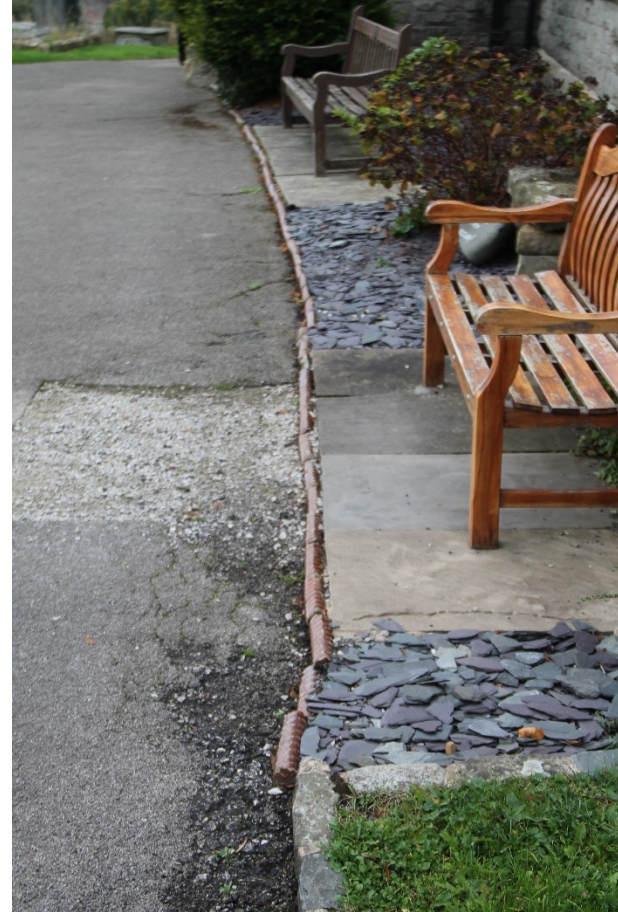
Path beside trees.

- Not part of faculty but path needs some work on it, and a fence erected at the far end on top of the slope



Edging stones

- 5) Extend cobblestone edging along the south side of church to replace the cracked and broken tile finish in this area; refinishing of other path areas.



Benches and edging stones

- 2) Introduce benches along the south wall of the church (three along wall, one in Garden of Remembrance) and two along path from steps in the southeast corner, all to be affixed to existing stone flags or set on new flags; also to replace current benches in poor condition.
(3) Introduce a low post and chain-link fence around the edge of the Garden of Remembrance and provide an extension to the stone slab paving to create a path to the newly introduced bench.



Benches

- And two benches along path from steps in the southeast corner, all to be affixed to existing stone flags or set on new flags; also to replace current benches in poor condition



Fruit Trees and light

- (1) Plant three fruit trees beside the path from steps in the southeast corner of churchyard.
- (4) Repair light above entrance gate.
- The PCC also suggest make the flower beds narrower by Turfing one edge



Details of faculty DAC Advice ref
2021-061631

The following works or other proposals were considered:

Reordering entailing:

(1) Introduction of external glazed doors to south porch, removal of draught lobby, replacement of internal doors with glazed doors, modifications to floor levels, drylining to interior of porch, and introduction of lighting and emergency signage.

(2) Removal of fixings for all pews in the central two blocks in the nave to make them movable.

(3) Disposal of all pews from the south aisle (retaining one to demarcate area at west end) and carpeting the retained pew platform in blue carpet to match carpet at the east end of the aisle.

(4) Disposal of all black plastic chairs and introduction of c.32 new Howe 40/4 chairs with red upholstered seats.

(5) Introduction of portable servery unit on castors in parish room and removal of radiator closest to kitchen door.

In accordance with Overton Architects drawings no. 2285/3/4_B and 2285/3/5_B, specification document for servery unit and porch plastering entitled "St Mary's Church - Building Projects 2021", sketch drawing entitled "Mobile servery unit", Integral LED product specification sheet, and Sylvania product specification sheet.

Porch

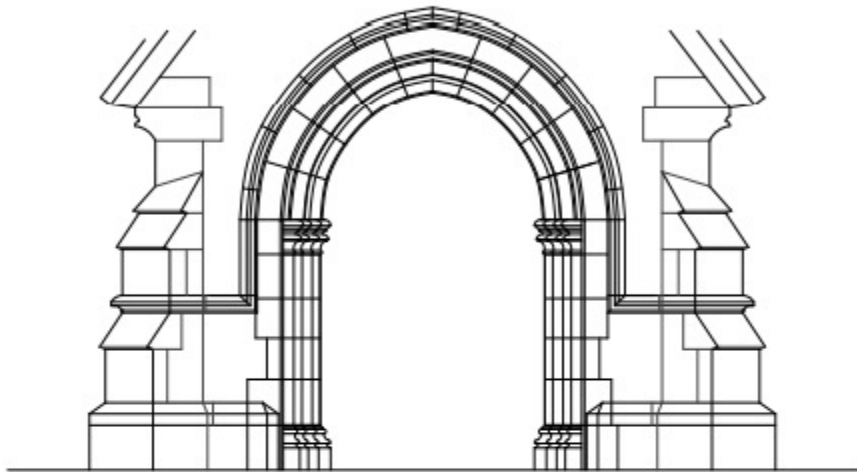
- (1) Introduction of external glazed doors to south porch, removal of draught lobby, replacement of internal doors with glazed doors, modifications to floor levels, dry lining to interior of porch, and introduction of lighting and emergency signage.



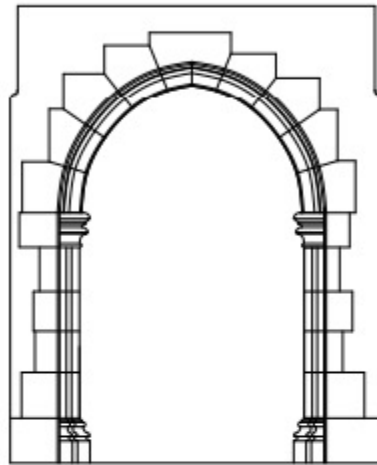
Lobby

- Removal of draught lobby, replacement of internal doors with glazed doors,

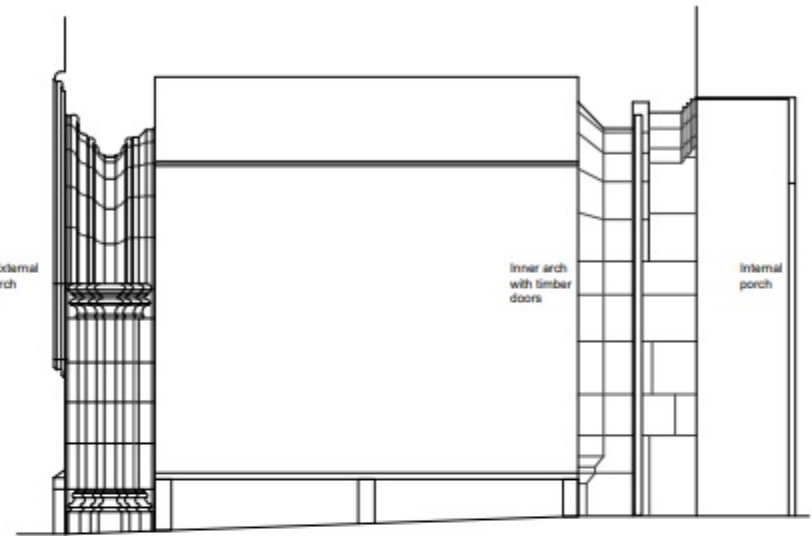




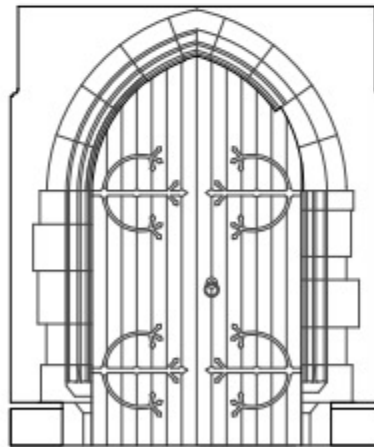
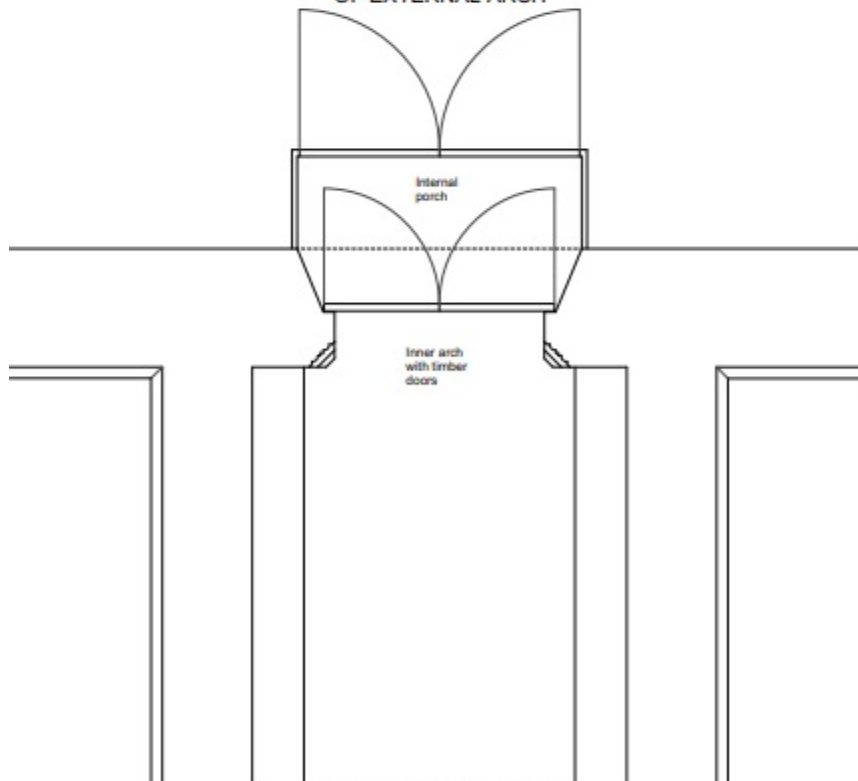
SOUTH ELEVATION
OF EXTERNAL ARCH



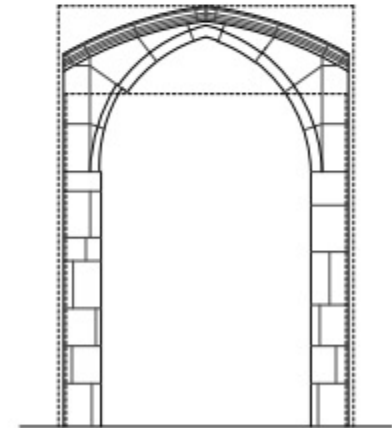
INTERNAL ELEVATION
OF EXTERNAL ARCH



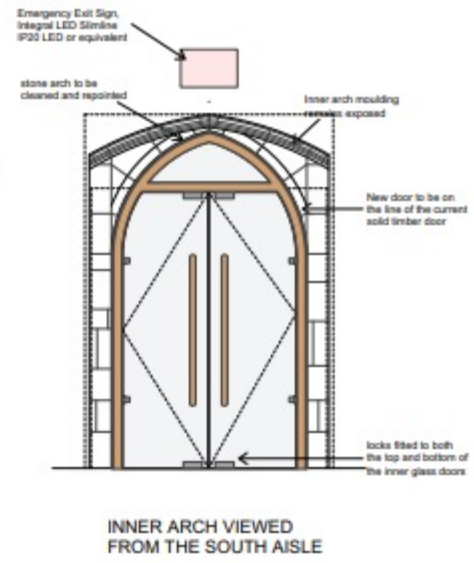
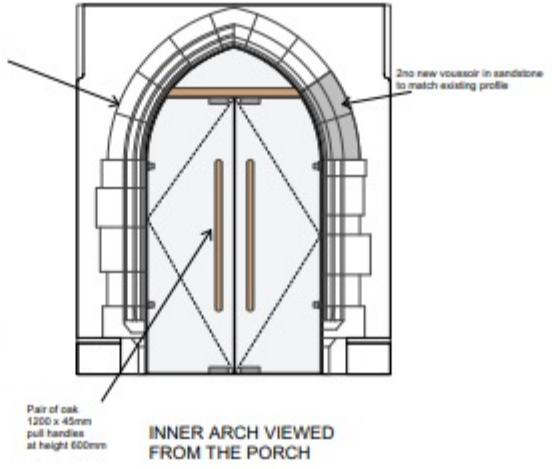
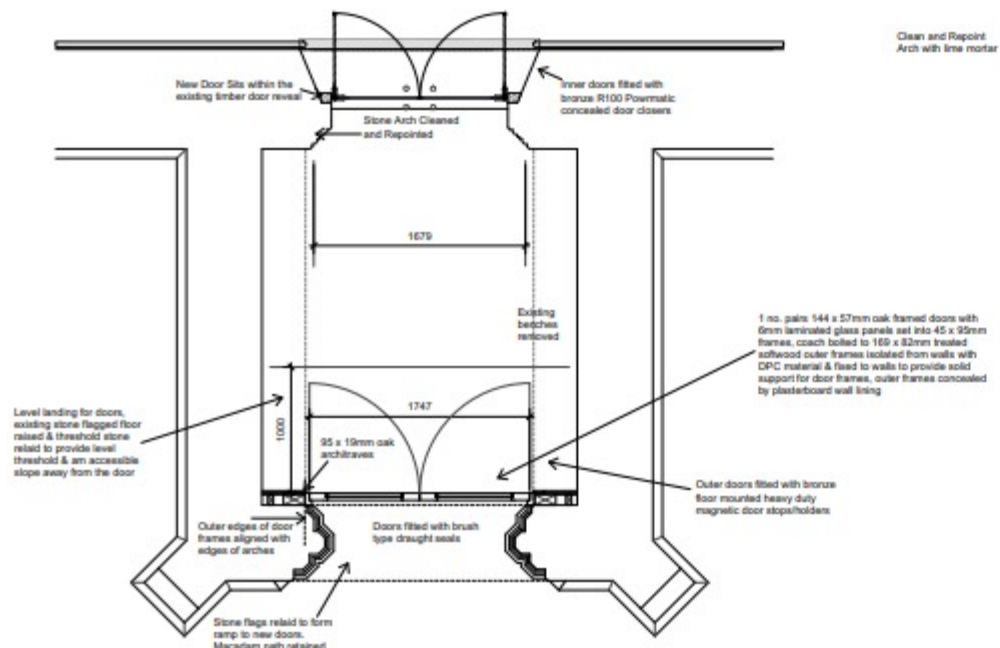
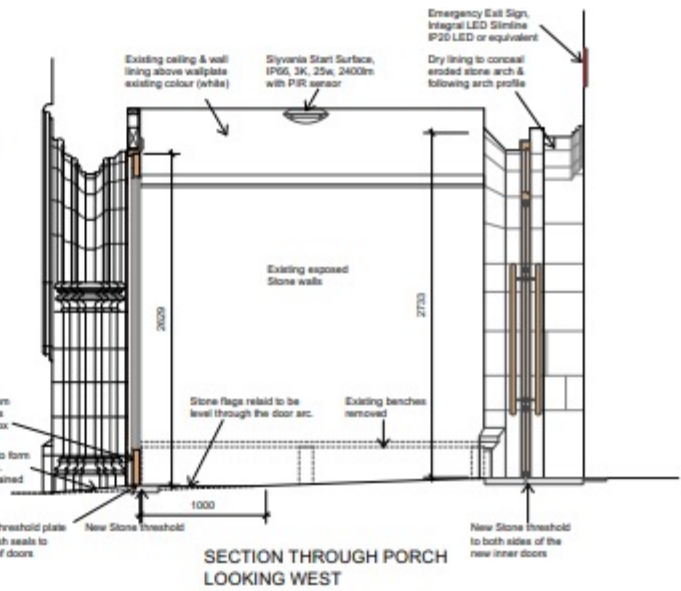
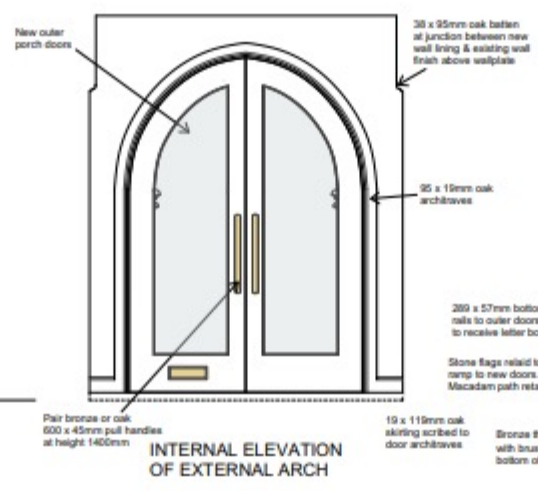
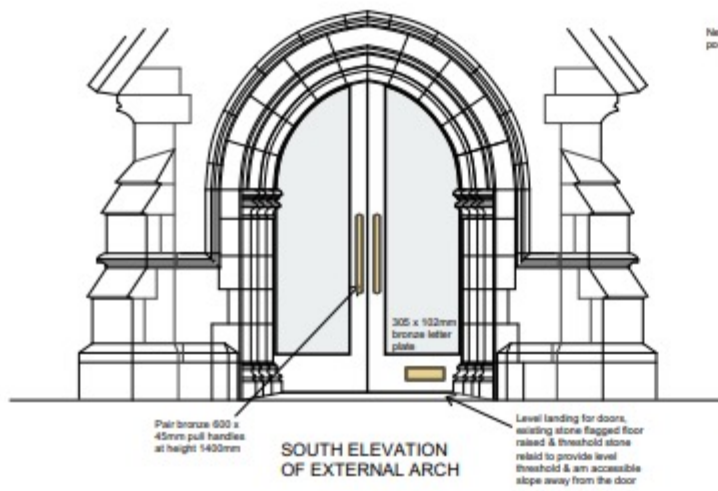
SECTION THROUGH PORCH
LOOKING WEST



INNER ARCH VIEWED
FROM THE PORCH



INNER ARCH VIEWED
FROM THE SOUTH AISLE



Similar type of doors on other churches



South Aisle pews

- (3) Disposal of all pews from the south aisle (retaining one to demarcate area at west end) and carpeting the retained pew platform in blue carpet to match carpet at the east end of the aisle.



Pews

- Keep this pew for now as it supports and protects the radiator



Loosen pews

- (2) Removal of fixings for all pews in the central two blocks in the nave to make them movable.
- This allows us to use the central area for other events such as a church bazaar



Other

- (5) Introduction of portable server unit on castors in parish room and removal of radiator closest to kitchen door.
- (4) Disposal of all black plastic chairs and introduction of c.32 new Howe 40/4 chairs with red upholstered seats.

