

*Christmas
and Advent
Services inside*

st JOHN⁺s

Living God's Love

Calm and bright...

Parish Magazine

WINTER 2024

*What's going on in the lead-up
to Christmas, and beyond*

cold walk
that sprig of winter jasmine
in my head all week

Haiku by Susan Lee Kerr, 2024. First published in Presence issue 78, 2024. Haiku in English are based on a Japanese form of poetry, briefly conveying a moment of awareness of nature or human life.

Thoughtful, quietly spiritual, this page in the magazine is intended as a space for reflection. St John's Church and its Remembrance Garden is open every day from 10.00am to 5.00pm for anyone who wants a quiet place for personal reflection.

st JOHN'S

Living God's Love

WINTER 2024

Features

Reverse Advent Calendar	7
Lifestyle Change	12
A Blue Christmas	25

Christmas at St John's

Advent and Christmas Services	16
Countdown to Christmas 24x24	21
Christmas concerts galore	5
Beyond Christmas	19

News to Know

New Music Director	9
Quiz night results	23
Brownies and Rainbows news	11
Local Treasures: CBT	27
Schools Update	26
Did you know?	13

Family Life

Little Acorns play group	23
Toddler Service	7
Christingle	16
Christmas Holiday Club	16

Community Action

Beer and Carols	17
Eco Church	14
Mother's Union	15
Christmas T@3	17
New Well Bean Sunday Tea	21

Regulars

Vicar's Welcome	5
Curate's corner	25
Need a prayer?	13
Parish Registers	29
Services Monday to Sunday	30

EDITOR

Susan Kerr

magazine@stjohnsharpenden.org.uk

DESIGN

Hornpie

hornpie.com

PRINT

Paragon

www.paragon.world/en-gb

Copy deadline for the Spring issue:
Monday 6th January 2025



Providing home care, support and companionship

Nannies4Grannies

Call Kay to discuss the range of specifically tailored services we can provide for you or an elderly loved one.



SCAN ME

01582 764305

www.nannies4grannies.co.uk

GEOFFREY WARWICK

**Furniture Restoration,
Conservation &
French Polishing**

*With over 30 years' experience
all restoration is undertaken
using only traditional
techniques and materials.*

*"Geoffrey is a mine
of information ... I felt
like taking him home
so he can advise me."*

Jane Bidder Journalist, Daily Telegraph

www.geoffrey-warwick.co.uk

Tel: 01727 799747 Email: info@geoffrey-warwick.co.uk



Vicar's Welcome

Welcome to the St John's Parish Magazine, which we are pleased to be able to deliver to you free of charge thanks to our wonderful team of distributors and street deliverers!

Inside you'll find our Christmas services (and after an error last year, Midnight Mass will definitely be happening as usual at 11.30pm on Christmas Eve). Our theme for this year's services is 'calm and bright', and we hope that throughout the season you will find something at your local church which offers a calming alternative to the rush of the season, as well as lots of joy as we celebrate again the birth of the Christ Child!



Revd Tim Vickers
Vicar of St John's Harpenden

www.stjohnsharpenden.org.uk

December: Christmas concerts galore

St John's Church is the place for festive music in the lead up to Christmas, with five events in December. Contact the organisers for information on their programmes, tickets and refreshments, or pop into the church porch for a poster or flyer.

Thursday 5th 7.00pm
AT Society Carol Concert
www.atsociety.org.uk

Sunday 8th 7.30pm
Continuum Concert
www.continuumchoir.co.uk

Monday 16th 8.00pm
Hardynge Choir Concert
www.hardynge.makingmusicplatform.com

Thursday 19th 7.30pm
Lea Singers Concert
www.leasingers.co.uk

Monday 23rd 3.00pm
Sonorité Music Concert
www.sonoritemusic.co.uk

Specialising in Harpenden
Property for over 30 years



RESIDENTIAL
SALES



PROPERTY
MANAGEMENT



NEW HOMES



LAND
ACQUISITION



PROBATE
VALUATIONS

www.harpendenproperty.co.uk

01582 766018

Toddler Service

We are blessed in Harpenden with lots of clubs and activities for pre-school aged children.

At St John's we also hold a very inclusive, informal and relaxed toddler service every Thursday at 10.15am during term time. We start in church with a hot drink and cake, then tell a Bible story with an interactive craft. We'd love to welcome you to join us, and you don't need to be baptised or a member of St John's to come. If you'd like to find out more, why not email the Vicar at: vicar@stjohnsharpenden.org.uk



Reverse Advent Calendar

What is a Reverse Advent Calendar you ask? It's 24 days of putting aside an item of non-perishable food for the local Foodbank to help make someone's Christmas special. Set aside a carton or carrier bag, and as you open your own right-way Advent Calendar, pop in a tin or pack of something long-life and tasty. Things like custard, UHT milk, soup, sweetcorn, festive biscuits (no mince pies and nothing alcoholic please) -- see the full suggestion list at the [Foodbank online](https://www.foodbankonline.org/).



When the Foodbank closes its Calendar donations on 12th December you will have collected a bountiful basket of 24 items. Yes, you'll have noticed the deadline. Reverse Advent began 18th November, so please play catch-up (say two items per day from 1st December?) because the Foodbank team need time to sort and deliver before Christmas. By 12th December, drop off your Reverse Advent foods in St John's church porch or at the nearest warehouse in Redbourn.

St Albans and District Foodbank thanks St John's folk for their generosity at Harvest: donations weighed 262.5kg, the equivalent of 625 meals, an incredible amount! More thanks to everyone who can donate during Advent – it means a lot to people in our area who will be hungry this Christmas.

Contact <https://stalbandsdistrict.foodbank.org.uk/> Tel 07414 463008



bodymechanix
AWARD WINNING HEALTH & WELLNESS CLINIC



69B High Street, Harpenden, AL5 2SL www.bodymechanixharpenden.co.uk ☎01582 945900

SERVICES

OSTEOPATHY
SPORTS THERAPY
MASSAGE
MUMMY MOT'S
CRANIAL & PAEDIATRIC
OSTEOPATHY
INJURY
REHABILITATION



YOUR LOCAL TRADING STANDARDS APPROVED LOCKSMITH
FULLY TRAINED LOCAL FAMILY BUSINESS

- LOCK OUTS • UPVC DOORS • WOODEN DOORS
- EMERGENCY CALLOUTS • POLICE VETTED

FAST RESPONSE TIMES
USUALLY WITHIN 30 MINUTES
WWW.LOCKSMITHSRUS247.CO.UK
01582 768 555



LABOUR CHARGE
MONDAY-FRIDAY
9AM-5PM
WHEN SHOWN THIS ADVERT



**COUNTRIFI
NETWORKS**

HARPENDEN BASED INTERNET, WIFI & CCTV SERVICES

**WE HELP HOMES AND
BUSINESSES WITH:**

**SLOW INTERNET
WIFI COVERAGE
ETHERNET CABLING
CCTV SYSTEMS
INTRUDER ALARMS**

**01582 383280
WWW.COUNTRIFI.CO.UK**

Cognitive Behavioural Therapy (CBT)

*Anxiety, Depression, OCD, PTSD, Alcohol issues, Substance misuse
& many more mental health concerns can be helped with CBT.*

MiriamLouiseCBT@outlook.com Phone: 07933809064



Rmn

Follow the Star: Calm and Bright

December can feel like chaos – lots of social events, services, Christmas presents to buy, never-ending to-do lists and the pressure to create the perfect Christmas. But in the midst of this chaos, our churches can offer an opportunity to find peace during this busy time.



The Church of England's theme for Advent and Christmas 2024, **Follow the Star: Calm and Bright**, draws on the world-famous carol, Silent Night:

“Silent Night! Holy Night!
All is calm, all is bright...”

One of the reasons that this carol is so universally loved is the way it invites us into the still centre of the Christmas story, to contemplate Mary holding the new-born Jesus, the Light of the World.

New music director Introducing Matt Harrison

I am very pleased to have been asked by Tim and the PCC to lead the music at St John's. Growing up in the area, I have always enjoyed playing the organ in the church since taking Grade 2 on it in 1991, and it is widely considered to be one of the finest in the area. St John's is a wonderful space for making music, and I hope to be able to involve as many people of all ages as possible in the musical life of the church, whether it be singing in the choirs, leading the hymns in worship, as part of an orchestra or coming to concerts which we are planning. I hope to hear from as many people as possible who would like to take part or have any suggestions; my email address is music@stjohnsharpenden.org.uk



Matt Harrison, St John's Music Director

New, easy access Chiropody/Podiatry Clinic
18 Broadfields AL5 2HJ

Susan Hammersley
MRCPod.

Having moved from Southdown, Susan now offers the same quality service in new premises.

Visit: Harpendenchiropody.com
Email: susan.chiropodist@outlook.com
Tel: 07811290215

CHRIS HEWITT CYCLES

Repairs & Renovations
Bicycle, Tricycle & Tandem Specialists

Harpenden's Longest
Established Cycle Business

Tel: 01582 763622

Cycles built to order; Wheelbuilding;
Large range of spares & accessories stocked;
New & secondhand cycles supplied to order.

CG ACCOUNTING LIMITED



ICAEW
CHARTERED
ACCOUNTANTS

*Offering accounting, bookkeeping &
tax services to suit all businesses*

**Self-Assessment, PAYE, VAT,
Bookkeeping, Payroll,
Management Accounts,
Annual Accounts Compliance**

Contact Caroline Guy on

Mobile: 07786 863050

Email: info@cgaccounting.co.uk
www.cgaccounting.co.uk

STEPHANIE RANDALL THE FLOWER STUDIO

2 Leyton Green, Harpenden
Herts, AL5 2TE

TEL 01582 769919

www.stephanierandall-theflowerstudio.co.uk

Glaze Time

Pottery painting for everyone

We run weekly term time sessions
in central Harpenden & Southdown
www.glazetime.co.uk

We also offer private bookings,
takeaway kits, clay impressions &
commissions.

For more info please contact
Michelle on **07958 324520**

Est 2014



Beechwood Park

*Our
future
starts here*

Join us at our Open Morning
Friday 7 February at 9:00am

An award-winning independent
co-educational preparatory school
for ages 2 to 13, offering day and
flexi-boarding in Hertfordshire.

beechwoodpark.com



NEW BROWNIES AND RAINBOWS



St John's welcomes the 14th Harpenden Brownies and the 17th Harpenden Rainbows to St John's Church Hall. They join the 19th Harpenden Brownies and Rainbows who have been meeting in our hall for many years.

Brownies and Rainbows are part of the Girlguiding movement which is the largest voluntary organisation for women and girls in this country, with a membership of 300,000. Girls usually join Rainbows at the age of 5, move up to Brownies when they are 7 and stay until they are 10, at which time they may like to become Guides.

They do arts and crafts, play games, follow the Girlguiding programme, have visitors and go on outings and Pack Holidays, and generally have lots of fun. Dates keep within the school terms so the girls do not get too tired.

Tuesdays

17th Rainbows 4.30pm - 5.30pm
14th Brownies 6.15pm - 7.30pm

Thursdays

19th Rainbows 4.45pm - 5.45pm
19th Brownies 6.15pm - 7.30pm

There is a termly subscription. If you have a daughter of this age who may be interested in joining us, please register at <https://www.girlguiding.org.uk>

All Girlguiding leaders are volunteers and more help is always needed. If you think this could be for you, pop into the hall on a Tuesday or Thursday evening and talk to a leader, or register at the website above or you can contact directly at Southdownguidingwaitinglist@gmail.com

IF SOMEONE YOU KNOW NEEDS PRACTICAL HELP...

Good local sources of confidential practical support for food, school uniforms, furniture, energy costs, personal advice, funding, vouchers and more:

The Harpenden Trust. See online www.theharpentrust.org.uk Or ring 01582 460457, email admin@theharpentrust.org.uk or come in person to the Trust's Centre, 90 Southdown Road, Harpenden AL5 1PS, 10am – 12noon Monday – Friday.

HertsHelp. Trained friendly advisors are on hand to offer confidential assistance and can put you in touch with helpful services and support locally. Call 0300 123 4044, email info@hertshelp.net or visit www.hertshelp.net

Lifestyle Change

The free St John's Lifestyle Change programme began from a serendipitous conversation with our Vicar, Tim.

After training as a health coach and spending the past three years helping GP surgeries across the UK support patients living with Type 2 diabetes, prediabetes, obesity, or overweight, and witnessing remarkable results, I felt inspired to offer the same support to my local community. I'm deeply grateful to Tim and Amanda for making this initiative a reality.

stJOHN'S **FREE** Lifestyle Change
Church Harpenden Course for Health Transformation



Obesity, Overweight, Type 2 Diabetes,
Prediabetes Sustainable Remission

I'm delighted to share that our first course is fully subscribed! The next intake is expected around Lent, in spring 2025, with 12 places available. This free programme offers a kind and supportive peer group, a comprehensive course book, and a WhatsApp group for sharing experiences and mutual encouragement.

The programme assumes it will take six months for participants to learn the basics and begin tailoring lifestyle changes to their needs, followed by a year of reasonable consistency (not perfection) to achieve lasting, transformational change. It's all about progress, not perfection—because real, meaningful change happens gradually.

The hopeful reality is that 93% of people with prediabetes achieve remission, and 9 out of 10 people living with Type 2 diabetes experience improved quality of life, including reduced medication. Nearly half reach full, drug-free remission.

The approach recognises that health is complex and that change takes time, patience, and evidence-based guidance. You are the best person to make important decisions in your own life, and this programme is about empowerment, not prescription.

This programme draws inspiration from the work of Dr David Unwin and his wife, Jen, whose pioneering lifestyle change approach has seen phenomenal success, as published in the [British Medical Journal](#).

Eranda Wickramasinghe

To register your interest, please contact the parish office at:
parish.office@stjohnsharpenden.org.uk or email eranda.p.w@gmail.com.

DID YOU KNOW?



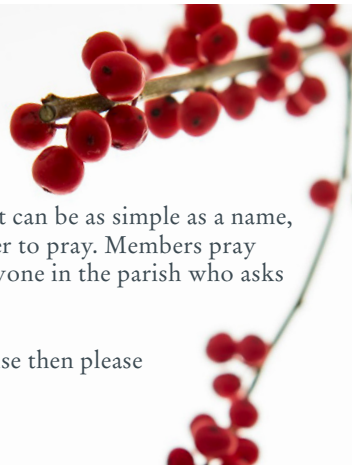
Symbols in stitches

There are seven different designs on the kneelers in St John's. And there are 208 kneelers in the church. Each design is a symbol to do with the life of St John the Baptist – do you know the meanings? The designs were prepared by Francis Skeat, a stained glass artist, and stitched by members of the congregation some forty years ago. Pictured is the Lamb and Flag, sometimes called the Agnus Dei (Lamb of God) with the Banner of Victory. John, having baptised Jesus Christ, said: 'Behold the Lamb of God who takes away the sin of the world.' How many different lamb designs can you find on the kneelers?

Need a prayer?

St Luke's Cell Prayer Group are always happy to pray for you (confidentially if needed). The group is named after the disciple and physician Luke, who is the patron saint of doctors. A request can be as simple as a name, if preferred. We don't need to know details in order to pray. Members pray individually and also meet monthly to pray for anyone in the parish who asks for prayers for themselves or for their loved ones.

If you would like us to pray for you or someone else then please contact Michael Hughes 01582 765576



Green up your Christmas

Start an annual, earth-friendly, Christmas family tradition – decorate a tree for the birds, go on a family nature hike, try to identify and count every bird you see on a Christmas Bird Count (see tips online). Or plant a small tree together to celebrate God's creation.

Christmas trees: Despite news from the plastic tree industry, real trees are generally better environmentally than their PVC counterparts, which aren't recyclable and may have been shipped great distances. The environmental impact of a real tree depends on where it comes from, how it is grown and how it is disposed of. Friends of the Earth recommend buying locally grown trees, or at least from the UK, ideally with a FSC certification. Don't throw away your plastic tree in order to 'go green' though. That would defeat the point!

Christmas cards: Cards are not recycled at St Johns, but stamps are. Look for a box in the church porch. The used stamps are sold to raise money for the charity Embrace the Middle East.

Food: Researchers from the University of Manchester say a typical Christmas meal generates the equivalent of 20kg of carbon dioxide emissions. Consider ways you can reduce your carbon footprint. Be sensible with meat consumption, treat yourself to locally sourced products, and don't over-cook the sprouts! Bigger drinks bottles help too. There is less waste in a few larger bottles than lots of small ones. Cheers!

With thanks for many of these tips to the All Saints Batford Eco Church group.

Margaret Charlston
eco.church@stjohnsharpenden.org.uk



Mothers' Union



St John's MU Branch continues to thrive and we have 20 active members. In 2026 we will celebrate 150 years of the founding of MU. Plans are underway for a special exhibition at Lambeth Palace.

Visitors are always welcome at our meetings. There is a programme on the noticeboard in the church porch and here's what's ahead in the immediate future. Do come along!

Wednesday December 4th 2.30pm - an Advent Service in the Lady Chapel with Carols and Festive readings, followed by a special celebration tea in the Committee Room.

This December again MU members throughout the Diocese will give generously so that all children at the three local domestic refuges which we support may be given a Christmas present from Mothers' Union. We buy toys, story books and gifts suitable for ages 0 to 16, they are all beautifully wrapped and presented just before Christmas.

Thursday January 9th 2.30pm - Linda Downie, a prison visitor for Bovingdon Prison, visits us to tell of her experiences in this role. Mothers' Union supports prisoners and their families in a variety of ways.

Thursday February 6th - the AGM which will be a bit different this year as MU in the Diocese is considering changes to its organisation which will demand some changes in our Branch as well. Watch this space!

Carol Cooke, Branch Leader. Contact parish.office@stjohnsharpenden.org.uk

T@3

Please join us for some delicious cakes and sandwiches whilst you enjoy some good companionship over a cup of tea. Everyone is very welcome to come along and join us, to meet up with old friends or indeed make new ones.

**St John's Church Hall 3.00pm,
last Friday of the month,
but please check the date on
stjohnsharpenden.org.uk or phone Parish Office
01582 712776**

**Sundays @ 5pm
at St John's**

- 1st Sunday - Faith and Light
- 2nd Sunday - BCP Evensong
- 3rd Sunday - Celtic
- 4th Sunday - Said Eucharist
- 5th Sunday - Taize

Follow the star: C Advent, Christmas and

Family friendly Christmas

Sunday 1st December
9.30am

Advent Sunday Parish Eucharist
Start of Mary and Joseph's travelling crib.

Sunday 8th December
5.00pm

Christingle
Family friendly service learning about the light
of the world and supporting The Children's Society.

Saturday 14th December
10am – 3.30pm

Christmas Holiday Club
Primary School aged children (reception to Y6)
are invited to join in a day preparing for the
Nativity Presentation on 15th December.
Preschool children need to be accompanied by an
adult. This event is free, but please book places via
parish.office@stjohnsharpenden.org.uk

Sunday 15th December
9.30am

All Age Nativity
All invited as our young people re-tell the
story of Jesus' birth.

Thursday 19th December
10.15am

Toddler Service
An interactive service for pre-schoolers and
their adults.

Tuesday 24th December
11.00am

Crib Service
Suitable for younger members of the family of
pre-school age. A short service of carols with
refreshments afterwards.

3.00pm

Walking to Bethlehem
Meet outside the Co-op as we walk the journey
to Bethlehem.

For up-to-date details on all church activities visit: www.stjohnsharpenden.org.uk/
St John's Church is open every day 10.00am - 5.00pm. For regular services see page 30.

Calm and Bright 'beyond... St John's 2024

ST JOHN'S PARISH MAGAZINE 17

Preparing for Christmas

Sunday 1st December
6.30pm

Advent Carols Service

A simple candle lit service at St John's for the start of Advent as we prepare for Christmas.

Sunday 15th December
5.00pm

Blue Christmas

A service for those who find Christmas difficult. All invited.

Sunday 22nd December
5.00pm

Nine Lessons and Carols

A traditional service of readings, music and singing. All invited

Community Christmas

Friday 29th November
5.30pm

Southdown Lights & Lanterns

Lantern parade 5.30pm, Lights switch on 6.15pm. Stalls, fun fair, Santa's grotto.

Friday 13th December
3.00pm

Christmas T@3

Afternoon tea to bring good cheer to the elderly in our community in St John's Church Hall.

Thursday 19th December
8.00pm

Beer and Carols @ The Engineer Pub

Singing your favourite carols with a pint of beer.

Merry Christmas!

Tuesday 24th December
11.30pm

Midnight Mass

Celebrate Christmas by Candlelight
Incense will be used at this service.

Wednesday 25th December
8.00am

Christmas Day Holy Communion

Quiet service without carols.

10.00am

Christmas Day All Age Parish Eucharist

Suitable for all the family with interactive talk.

Turn the page to see beyond Christmas

Is Your Computer Misbehaving?



Harpenden Computer Services
Making IT Simple!

☎ 01582 769 207 ✉ info@HarpendenComputerServices.co.uk

🌐 www.HarpendenComputerServices.co.uk

Macs | PCs | iPads | Smartphones | Internet | Email | Backups | Data Recovery



HIGH ELMS
Tree Surgery Ltd

01582 840144 07939 623675

www.highelmtreesurgery.co.uk

Email: info@highelmtreesurgery.co.uk

- NPTC CERTIFIED
- POLLARDING
- RESHAPING
- STUMP REMOVAL
- HEDGES TRIMMED, SHAPED & REMOVED
- DEAD WOODING
- REDUCTIONS
- CROWN LIFTING
- AGRICULTURAL SERVICES
- LOGS DELIVERED
- TREE REMOVAL
- T.P.O. & PLANNING APPLICATIONS
- 24hr EMERGENCY CALL-OUT
- TREE SURVEY INSPECTIONS & REPORTS



No Job too small • FREE Estimates & Advice • Fully Insured to £10 million & Approved by Local Authorities

Herts, Beds, Bucks & London + we will beat any written quotation

Registered in England No. 5005478
VAT Reg. No. 847 4261 12

HICKS

**CHARTERED ACCOUNTANTS
AUDIT & TAX SPECIALISTS**

www.hicks.co.uk

- Free Initial Consultation (Quote STJOHN24)
- Personal Tax Returns • Tax Planning
- Sole Trader, Partnership and Limited Company Accounts
- Bookkeeping • VAT • Payroll
- Specialists in Business Startups and Company Formations
- Help with R & D Claims



**ICAEW
CHARTERED
ACCOUNTANTS**

Tax Office:

8 Harding Parade,
Station Road,
Harpenden,
AL5 4SW

Tel: **01582 463 590**

Email: tax@hicks.co.uk or
admin@hicks.co.uk

Registered to carry on Audit work in the UK by the Institute of Chartered Accountants in England and Wales.

Calm and Bright: Beyond Christmas

Wednesday 1st January
10.30am

Sunday 5th January
9.30am

Sunday 2nd February
9.30am

Wednesday 5th March
10.30am

8.00pm

New Year's Day

Holy Eucharist in the Lady Chapel, followed by drinks in the vicarage.

All Age Parish Eucharist for Epiphany
Suitable for all the family, with Blessing of Epiphany Chalk for house blessing.
Incense will be used at this service.

All Age Parish Eucharist for Candlemass
Suitable for all the family, celebrating the light of Christ. Bring candles or torches for blessing.

Ash Wednesday, Lent begins
Communion with imposition of ashes.

Sung Eucharist with imposition of ashes.

AT society
awareness research care

CHRISTMAS CONCERT

SPONSORED BY
HARPENDEN
BUILDING SOCIETY

JOIN THE AT SOCIETY FOR A NIGHT OF CHRISTMAS
CAROLS AND CLASSIC CHRISTMAS SONGS

FEATURING
MAGIC VOICES
CRABTREE JUNIOR SCHOOL CHOIR
MIKE HODGE

5 DECEMBER 7-9PM

BAR / MULLED WINE / RAFFLE

St John's Church
Harpenden, AL5 1DJ

Adults £12 in advance (£15 on the door)
See website for concessions

Tickets also available from Silver Palate, Harpenden

www.atsociety.org.uk/events/concert

SCAN ME!



"Trust the name you know"

St Albans

Dartmouth House

68 Alma Road

St Albans

AL1 3BL

01727 851006

Harpenden

Parchment House

9 Victoria Road

Harpenden

AL5 4EB

01582 461100

Marshalswick

Marshal House

67 The Quadrant

Marshalswick

AL4 9RD

01727 812244



DIGNITY

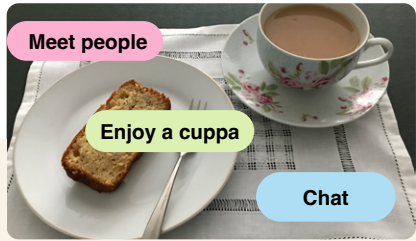
FUNERAL DIRECTORS



HARPENDEN VILLAGE INNER WHEEL CLUB

SUNDAY AFTERNOON TEA AND CHAT

THE HARPENDEN TRUST'S WELL BEAN CAFE
Above the Co-op on Southdown Road (Lift access available)



At a loose end on a Sunday afternoon? Why not drop in at the Well Bean Cafe for a cup of tea or coffee, a slice of cake and a chat between
2.30 - 4.00pm
12th January,
9th February, 9th March 2025

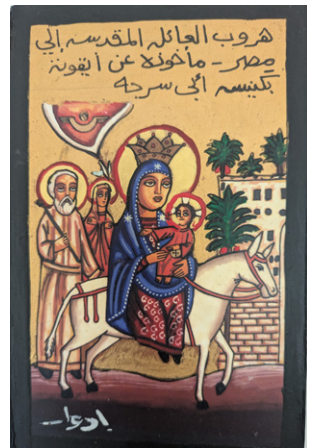
The Harpenden Trust has kindly allowed the members of Harpenden Village Inner Wheel Club to open the Well Bean cafe on these days. Members will be on hand to make a drink, serve cake and have a chat if you feel like it. There is no charge but a donation towards the cost of refreshments would be welcome.

Luke 1- 24: the real countdown to Christmas

This year we have the rare occurrence of Advent (the season of preparation before Christmas) starting on 1st December. Most importantly this is the same date on which most Advent Calendars begin too!

It also means that there are 24 days until Christmas. By amazing coincidence there are 24 chapters in the Gospel according to Luke. If you want to discover the 'reason for the season' why not read a chapter a day and find out why we celebrate Christmas and why it so important.

If you do, why not join us at St John's on Christmas Day at 10.00am and don't forget to tell the Vicar!



An icon of the Holy Family from the Coptic Church in Egypt. There has been a Christian Community in Egypt since the 1st century AD and today Christians make up over 20% of the population. There are many holy sites associated with the journey of the Holy Family when they were refugees in Egypt.

Christopher THE LOCKSMITH

ARE YOUR LOCKS BEHAVING BADLY?

We Value Old Fashioned Customer Service
A Local Trusted Family Business Since 1989

-  Specialist in UPVC & Wooden Doors
-  No Call Out Charge
-  No Fix No Fee
-  All Work Fully Guaranteed
-  10% Senior Citizen Discount



For More Advice & Help Call Christopher:
07772 111 222

www.christopherthelocksmith.co.uk

Stunning Engraved Memorial Plaques

Handmade durable oak crosses & stakes

Solid brass or brass effect plaques



Bench plaques, house signs and more!

Richard Smith, Oldways Engraving, Laburnum Cottage,
1 Chapel Lane, Ravensden, Beds. MK44 2RB
richard@oldwaysengraving.co.uk 07879 656428
<https://www.etsy.com/uk/shop/Studio26Engraving>

Harpenden's latest Community Café

The Well Bean Café, run by the **Harpenden Trust** at their new premises above the Co-op in Southdown Road

A warm welcome will be extended to all between **10.30 and 12.30 on all weekdays**



Well Bean Café



 @continuumchoir

CONTINUUM
DIRECTED BY HARRY GUTHRIE

www.continuumchoir.co.uk

Christmas with Continuum

Choral music by
Gustav Holst | Ralph Vaughan Williams | Elizabeth Poston
and Britten's A Ceremony of Carols




St. John's Church
Harpenden
8th December
7:30pm

Tickets available
on Eventbrite or
on the door

£20 £10 Free
Adults | Students | U16s

Little Acorns

Little Acorns is a friendly toddler group for babies, pre-school children and their carers.



The last session in 2024 is Tuesday 17th December when we will have Christmas activities and mince pies and then go next door into the church for a short story and singing session.

We meet in St. John's Hall on Tuesdays, 10.00 – 11.30am. This a friendly group where parents and carers have a chance to have a coffee, homemade cake and chat. All are welcome. The children enjoy a healthy snack, activities, a story and singing.

Term time dates:

Spring term 7th January – 1st April

No meeting on 18th February (half term)

On 4th March we celebrate Shrove Tuesday with pancake races!

No booking necessary. A voluntary donation is all that is asked.

For more information, please contact parish.office@stjohnsharpenden.org.uk

Telephone 01582 712776

Quiz results!

Many thanks to everyone who went 'back to school' and sat Professor Bedding's devious exam questions on Saturday 21st September. Congratulations to the Pencil Cases who were awarded gold stars for winning the laurels!

Gigantic thanks to Paul and his family for the question setting and scoring and to Liz Sergeant for the organising. And huge thanks too for the generous support of local Southdown businesses who donated over 30 prizes for our raffle. Over £1000 was raised for Project Phoenix.



Quiz night 21st September: Paper planes were thrown, lessons attended and fish and chips enjoyed - a fun night was had by all!

**ALL BRICKWORK
UNDERTAKEN
GARDEN WALLS TO EXTENSIONS**
Specialising in House Repointing
and Renovations
QUALIFIED TRADESMAN
DAVID SAMPSON
TEL: 01582 762773



Your Local Chartered Building Surveyors

Design & Planning drawings
Building Regulation drawings
Project Management
Party Wall Agreements
Building Surveys

07968 728704
info@mb-surveyors.co.uk
www.mb-surveyors.co.uk

Free initial site visit



DAVIS & CO

CHARTERED CERTIFIED ACCOUNTANTS

Looking for expert guidance on Inheritance Tax (IHT) and Trust Planning, Wills, and Probate?

At Davis & Co LLP, we provide tailored solutions to protect your family's future.

**Contact us at: Davis@davisllp.co.uk
01582 761121**



Nicole Pyne Podiatry

For all your foot-care needs including
Toenail care – ingrowing, thickened nails or just
difficulty reaching down to cut them then let me help.
Callus, corns and foot-care advice.

@The Southdown Clinic or home visits available
Call Nicole on **07734 810975**

MJG Builders Limited

*Harpenden based
Over 25 years experience*

All general building work undertaken including:

Full Refurbishment | Extensions | Loft Conversions | Basements
Kitchens | Bathrooms | *Call now for a Free Estimate*

Tel: 01582 761815 M: 07702 190277
mjgproperty@btinternet.com

Curate's Corner

A Blue Christmas

Christmas is upon us, but are we all looking forward to the celebrations? If you have not had a particularly good year, the Christmas season may not be a bright and joyful occasion.

Christmas can be poignant if you are grieving the loss of a loved one, and difficult if you have experienced pain and loss of any kind, or learned that you or someone close to you has a terminal illness. How about those going through financial difficulties or a relationship breakdown? Christmas will feel so different compared to what is going on outside. Let us face it, our world caters for the majority and most people will be running around shopping while Christmas lights shine and Christmas music plays everywhere.

What do you do when you cannot feel the joy of the Christmas season? Many of us will want to hide away from the festivities. I always look at the Bible and read about that first Christmas. It was nothing like what we have today, but the message remains the same. The fact that God is there looking out for us no matter what we are going through brings me comfort.

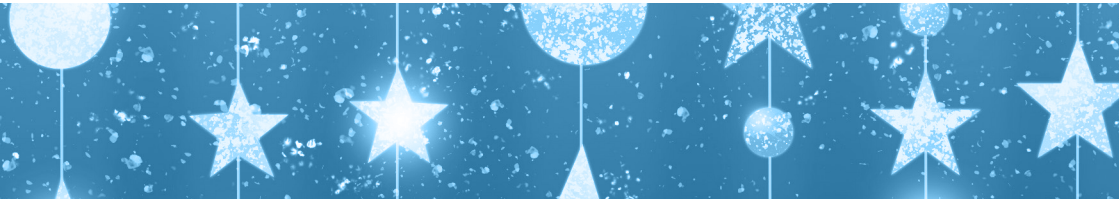
Your problems may not all go away, but God will be with you as you navigate the dark valleys of life. Call out to God and with time you will make your way back to the top of the hill and begin to feel like yourself again. Be kind to yourself and allow yourself time to grieve if you have lost your loved one or are living through dark days. Try to reflect on the good times you had before.

I hope that those experiencing the joy of Christmas can look out for people who are struggling this season, no matter the reason, because it is during those times that we build lasting friendships and communities.

Whatever you may be going through, my prayer is that you will find the peace of Christmas and the strength you need to go through this Christmas.

Rev'd Ritab Namakula
Curate of St John's Harpenden

St John's Blue Christmas service at 5.00pm on Sunday 15th December is especially for those who find Christmas difficult.



Schools update

Hertfordshire primary, junior and middle school admissions opened 1st November for places to start in September 2025. The applications deadline is 15th January 2025.

The Grove Infant and Nursery School

Primary Admissions: For children born 1st September 2020 – 31st August 2021, infant school tours for parents are on Monday 25th November and Thursday 5th December, see website below to book.

Nursery Admissions: For children born 1st September 2021 – 31st August 2022, nursery tours for parents will soon be available. The nursery now offers wraparound provision from 7.30am - 6.00pm.

Headteacher Miss Andrea Sharkey

The Grove Infant and Nursery School, Dark Lane, Harpenden AL5 1QD

Telephone: 01582 761849 admin@groveinfants.herts.sch.uk www.groveinfants.co.uk

To book tours please see the website under admissions.

The Grove Junior School

Admissions tours for parents of children born 1st September 2017 – 31st August 2018 are on Wednesday 27th November and Thursday 28th November. To book, contact the email below.

Headteacher Miss Lorna Urquhart

The Grove Junior School, Dark Lane, Harpenden AL5 1QB

Tel 01582 760031 admin@grovejm.herts.sch.uk <https://grovejm.herts.sch.uk/>

Aldwickbury School

Aldwickbury School is an independent pre-prep and prep school in Harpenden for boys aged 4-13. Open Mornings are held regularly throughout the academic year. The next Open Morning is on Friday 28th February 2025. To attend, please register on the website below.

Please see the admissions process on the website. For individual visits or related queries contact Sue McKinnon, Head of Admissions admissions@aldwickbury.org.uk

Headmaster Mr Paul Symes

Aldwickbury School, Wheathampstead Road, Harpenden AL5 1AD

Tel: 01582 713022 office@aldwickbury.org.uk www.aldwickbury.org.uk

Beechwood Park School

Beechwood Park School is an independent co-educational prep school in Markyate, Hertfordshire for children age 2 – 13. Tours run every term as Open Mornings, with pupil guides participating. The next Open Morning is on Friday 7th February 2025. To attend, please register on the website below.

Private tours are available as well. Contact Louise Lynes, Head of Admissions, to arrange a convenient time. Reach her via email admissions@beechwoodpark.com

Headmaster Mr Christian Pritchard
Beechwood Park School, Markyate AL3 8AW
Tel 01582 840333 frontdesk@beechwoodpark.com www.beechwoodpark.com

St John's attendance passport

For Year 4 students thinking of applying to St George's School, St John's church operates a passport system for monthly attendance. St George's is a non-denominational secondary-mixed Christian day and boarding school.

Headteacher Mr Andy Ford
St George's School, Sun Lane, Harpenden AL5 4TD
Tel 01582 765477 admin@stgeorges.herts.sch.uk www.stgeorges.herts.sch.uk

The Hertfordshire website for overall schools information is www.Hertfordshire.gov.uk

Local Treasures: Positive Mental Health

Passionate about positive mental health, I trained and worked as a mental health nurse in the NHS mental health services for over 30 years. During that time, I continued to complete further studies, including qualifications in epilepsy care, autism spectrum disorders, psychology, counselling and Cognitive Behaviour Therapy (CBT).

During my work as a mental health nurse, I heard from people who had found CBT valuable but even though they worked full time were unable to fund therapy. At the beginning of 2024 I launched Miriam Louise Cognitive Behaviour Therapy as a private practice which aims to provide more affordable CBT. My CBT is based on a caring, non-judgemental and empathetic approach created with the client around their own individual needs. Appointments are flexible, and in person or remote to suit the individual's needs.

For information see [Miriamsibt Facebook page](#) or reach her by phone on 07933809064 or email Miriamlouiseibt@outlook.com



Miriam Louise has lived in Harpenden for 27 years, 18 of them in Southdown. Here, for St John's, she talks about her mental health therapy practice.

K.S. & K.G.TYLER

Motor Engineers

**All makes of cars
serviced and repaired**

**60A Cravells Road
Harpenden, Herts**

| 01582 713328

Established since 1964

Ken Hodson Computer Hardware and Software Repairs

- Upgrades and Advice for Home and Business
- No fix, no fee for all repairs – you have nothing to lose
- Most repairs carried out in your home, if not the computer will be picked up from and delivered back to you

Telephone: 07974 156743 or 01582 794723

Email: enquiries@kenhodsoncomputerservices.co.uk



HARPENDEN CLEANING

Professional Carpet & Upholstery Cleaning

01582 715641 and 07870 946269

HARPENDEN FENCING

**Your local fence and gate contractors servicing Harpenden and surrounding villages. From small repairs to complete new runs.
Free advice and quotations.**

www.harpendenfencing.co.uk

Tel. 07584 576 211

Follow the team on Instagram [#harpenden_fencing](https://www.instagram.com/harpenden_fencing)

Parish registers

Baptisms

Welcome to the family of God

18th August 2024

Sonny George Tompkins-Smith

Noah Alexander Tompkins-Smith

7th September 2024

Isabella Rose Newson-Love

22nd September 2024

Madeleine Lamorna Marie Jones

Funerals in Church

May they rest in peace

25th June 2024

Janet Friar

2nd September 2024

Jennifer Horton

26th September 2024

Wendy Gray

Wedding Vow Renewals

Joined by God

7th September 2024

Jamie and Nicki Newson-Love

(10 years)



(The Night Before)
The Night Before Christmas
 A FESTIVE FAMILY CONCERT FOR ALL

MONDAY 23rd DEC at 3pm
 St John's Church, Harpenden

£13.50 General Admission
 £6 18-25s
 Under 18s FREE



SONORITÉ MUSIC



Regular Services at St John's

Sundays

- 8.00am Holy Communion in the Lady Chapel
9.30am Parish Eucharist (*also live streamed*) followed by coffee in the hall.
All Age Eucharist, *normally 1st Sunday of the month*
5.00pm Evening service, *see website for details*

Wednesdays

- 10.30am Holy Eucharist is celebrated in the Lady Chapel

Monday - Friday inclusive

- 9.30am Morning prayer is said

Church is open every day from 10.00am to 5.00pm.

Service times may change so please check the calendar on our website or sign up there to our weekly or monthly newsletter www.stjohnsharpenden.org.uk

Watch our Parish Eucharist and other special services on our YouTube channel - search for "St John's Church, Harpenden" or visit:

<https://www.youtube.com/StJohnsChurchHarpenden>

The Parish Office is open Monday – Thursday 10.00am - 2.00pm



PARISH OFFICE

For enquiries, including marriages, baptisms, funerals and hall bookings, please contact the parish office.

OPEN

MONDAY - THURSDAY

10.00am - 2.00pm

Amanda Knights

Telephone: 01582 712776
parish.office@
stjohnsharpenden.org.uk

If you are in need of help or know anyone in need of support, please contact support@stjohnsharpenden.org.uk

Parish Directory

VICAR

Revd Tim Vickers

Telephone: 01582 469343
vicar@stjohnsharpenden.org.uk

CURATE

Revd Ritah Namakula

Telephone: 07301 035089
ritah@stjohnsharpenden.org.uk

READERS

Lauryn Awbrey

Telephone: 01582 624823
lauryn.awbrey@stjohnsharpenden.org.uk

David Nye

Telephone: 01582 762785
dandhnye@btinternet.com

Anne Edwards

Telephone: 01582 767449

WARDENS

Position vacant

DIRECTOR OF MUSIC

Matt Harrison

music@stjohnsharpenden.org.uk

TREASURER

Alison Bygrave

treasurer@stjohnsharpenden.org.uk

Our magazine is published four times a year and is delivered free to all homes and businesses in the parish.

We are very grateful to those who write contributions and the many volunteers who distribute and deliver the magazines, come rain or shine, to everyone in the parish.

We welcome advertisements and are delighted to be able to provide full colour.

St John's PCC takes no responsibility for statements made in advertisements or other content in this magazine nor linked websites, nor for any matter arising therefrom.

To protect privacy, personal email addresses do not appear in the web edition, unless requested.

*Christmas
and Advent
Services inside*



What's going on in the lead-up to Christmas, and beyond

www.stjohnsharpenden.org.uk

St John's Church, 5 St John's Road, Harpenden, Herts AL5 1DJ

Parish Office 01582 712776



@StJohnsAL5



@StJohnsAL5



@stjohnsal5