



A simple way to manage giving to your church



What is the Parish Giving Scheme?

The Parish Giving Scheme (PGS) is a convenient and efficient way to help you plan your giving and, where appropriate, do so tax efficiently. Whether you currently give by Standing Order, envelope or open plate you can easily make the switch to this secure and efficient Direct Debit system.

The Parish Giving Scheme can help you manage your giving in a stress free way, and we now have over 37,000 donors* and 25 Dioceses* nationally.

** figures correct at time of printing*

How does the Scheme work?

You give your regular donations to your church by Direct Debit on a monthly, quarterly or annual basis on the 1st working day of the month. Your full gift is automatically credited to your church within ten days.

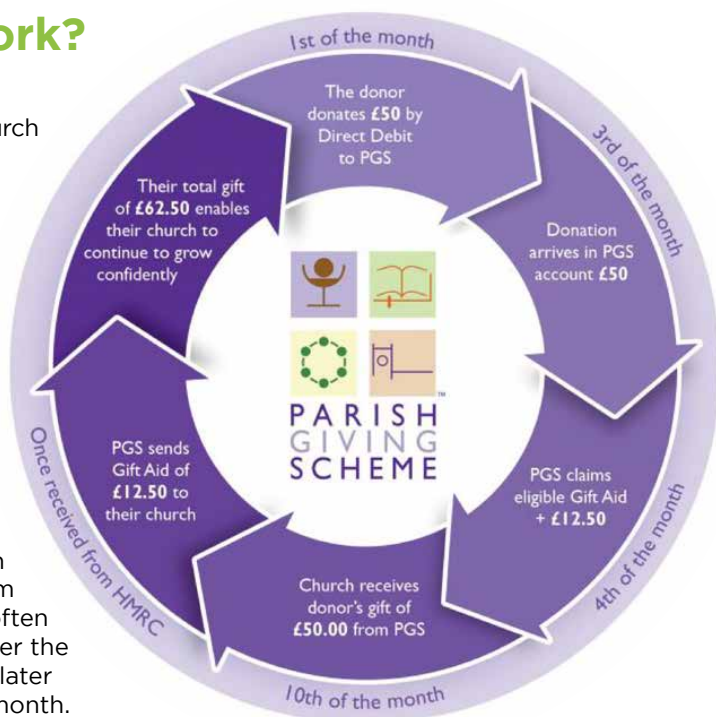
The full amount of any associated Gift Aid is credited to your account as soon as it is recovered from HMRC. This is most often repaid a few days after the gift and normally no later than the end of the month.

You can choose to inflation proof your gift which will make a huge difference to your church's finances. You can change or cancel the amount at anytime by a simple phone call, so you can confirm the amount that you give before your account is debited.

Why does inflation matter?

Your church, like our government and every household is hit by inflation, eroding the value of your gifts.

The Parish Giving Scheme tackles this by enabling you to choose the option to increase your giving annually in line with inflation.



“

I wholeheartedly encourage you to adopt the Parish Giving Scheme. It will bring considerable benefits to individuals and churches as together we seek to Live God's Love generously and joyfully in St Albans Diocese.

BISHOP ALAN

”

You simply tick the necessary box on the gift form to authorise an inflationary increase.

The Parish Giving Team will send you an annual inflationary letter so that you retain control.

Why give in a new way?

The Church of England has a Christian presence in every community, seeking to be at the heart of all our cities, towns and villages.

Our church serves our community by sharing our faith and values, worshipping together and by our wonderful buildings.

For our church to grow and plan for the future we rely on your regular gifts.

If you sign up to the Parish Giving Scheme more of your money and our time can be devoted to God's mission.

What do I do next?



Your church council has already signed up to the Parish Giving Scheme. All you need to do is to complete an original Gift Form - available from your treasurer or Gift Aid secretary.

You will need to tick the necessary box on the Gift Form to select an inflationary increase.

If you currently give by Standing Order you will need to cancel the existing payment directly with your bank either in person, telephone or online.

You can also choose to give anonymously and your church will only be notified of the amount of your gift.

“

It's a win win proposition which helps our treasurer and church.

FRANKIE, CHURCHWARDEN

”

Everyone benefits

- You are in total control of the amount you give.
- The Direct Debit guarantee means your gift is secure and safe.
- Gift Aid is automatically claimed for the church, this means reduced administration and less work for your treasurer and Gift Aid secretary.
- A hugely popular option is available to automatically increase your gift annually by inflation.
- You can have tokens to put on to the open plate to reflect your generous giving and as a symbol of God blessing all gifts offered.
- We have help available from the St Albans Diocese and the Parish Giving Scheme, a UK based charity in partnership with all the dioceses in the scheme.
- So why not sign up for this simple, tax efficient method of giving that benefits you and your church?



Local Church contact details:

**For more information on Mission Resourcing please contact
The Flourishing Churches Team on 01727 818141,
email fcadmin@stalbans.anglican.org or go to www.stalbans.anglican.org**