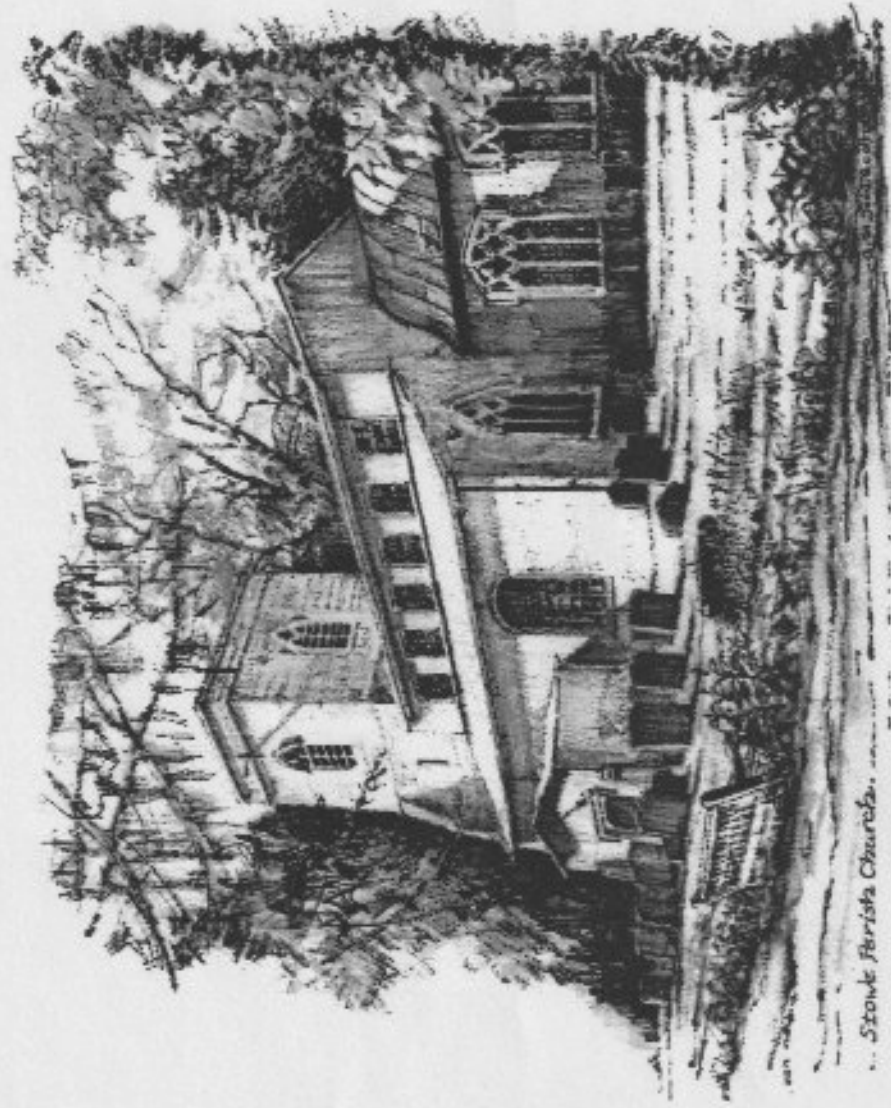


TRANSCRIPTION OF GRAVES IN THE
CHURCHYARD OF ST MARY'S, STOWE



Transcribing undertaken by Chris and Philippa Atkinson in 2014-15

Updated July 2018 by Jack Ryley

Cover illustration by Guy St John Scott

Whilst every care has been taken to achieve accuracy, there will always be errors in the process of transcribing due to the age and fragility of the stones. Checks were made with the Burial Registers in the Local Studies Centre, Aylesbury and in some cases information from these records, indicated by square brackets, has been included in the entries.

Dots represent illegible words or letters and oblique marks indicate line breaks.

INDEX

Graveyard Areas

Register of Gravestones

Index in Alphabetical Order

Index in Date order

CHURCH of St MARY the VIRGIN. STOWE

GRAVEYARD AREAS

KEY

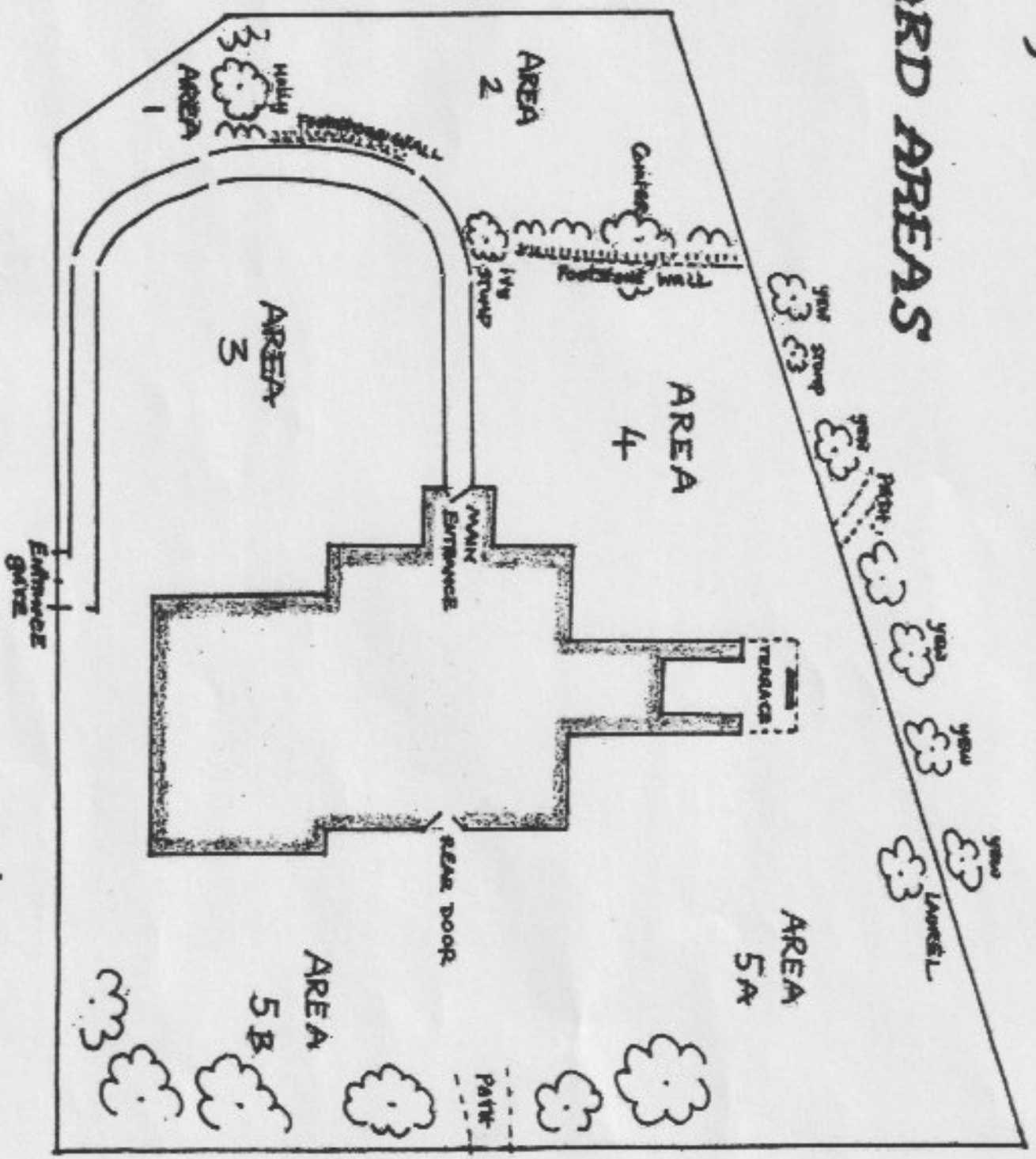
Upright Headstone

Flat or Fallen Headstone

Footstone.F.S.

Footstone Wall

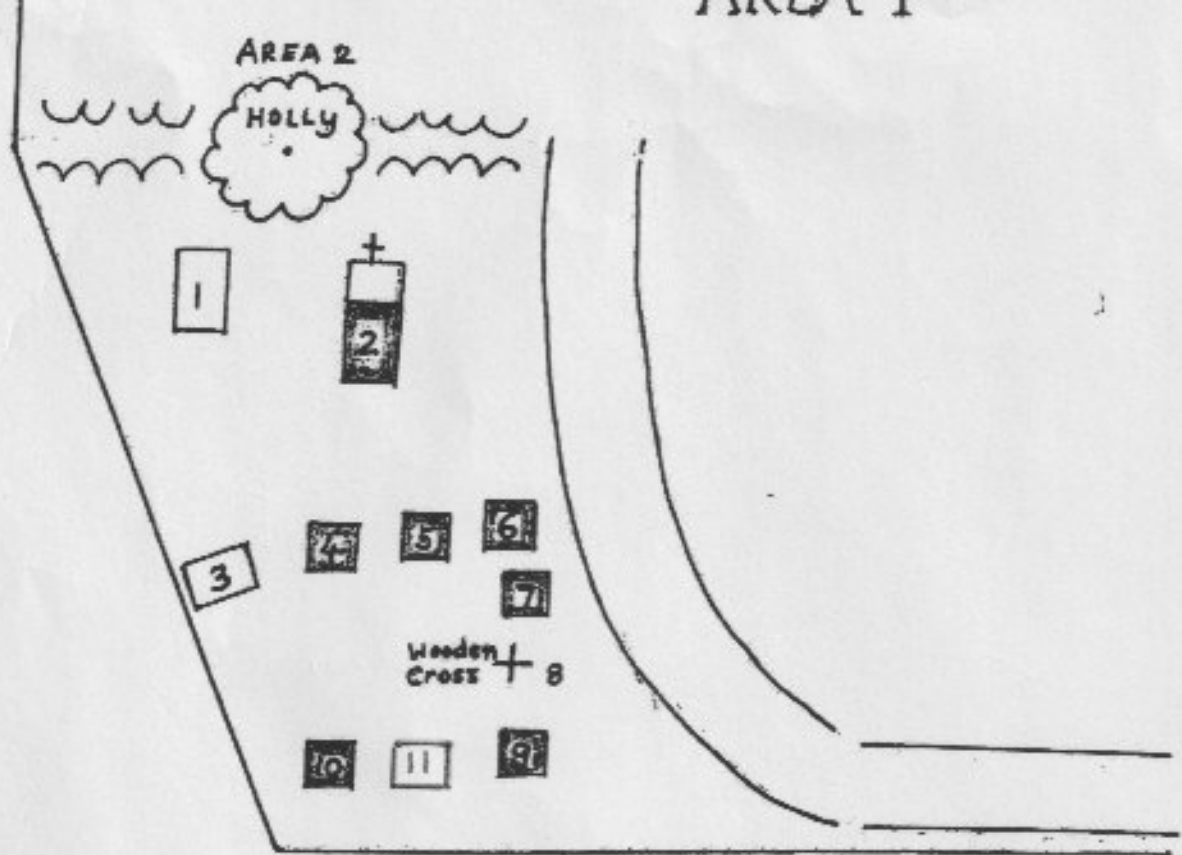
Footpath



0 3 6

N

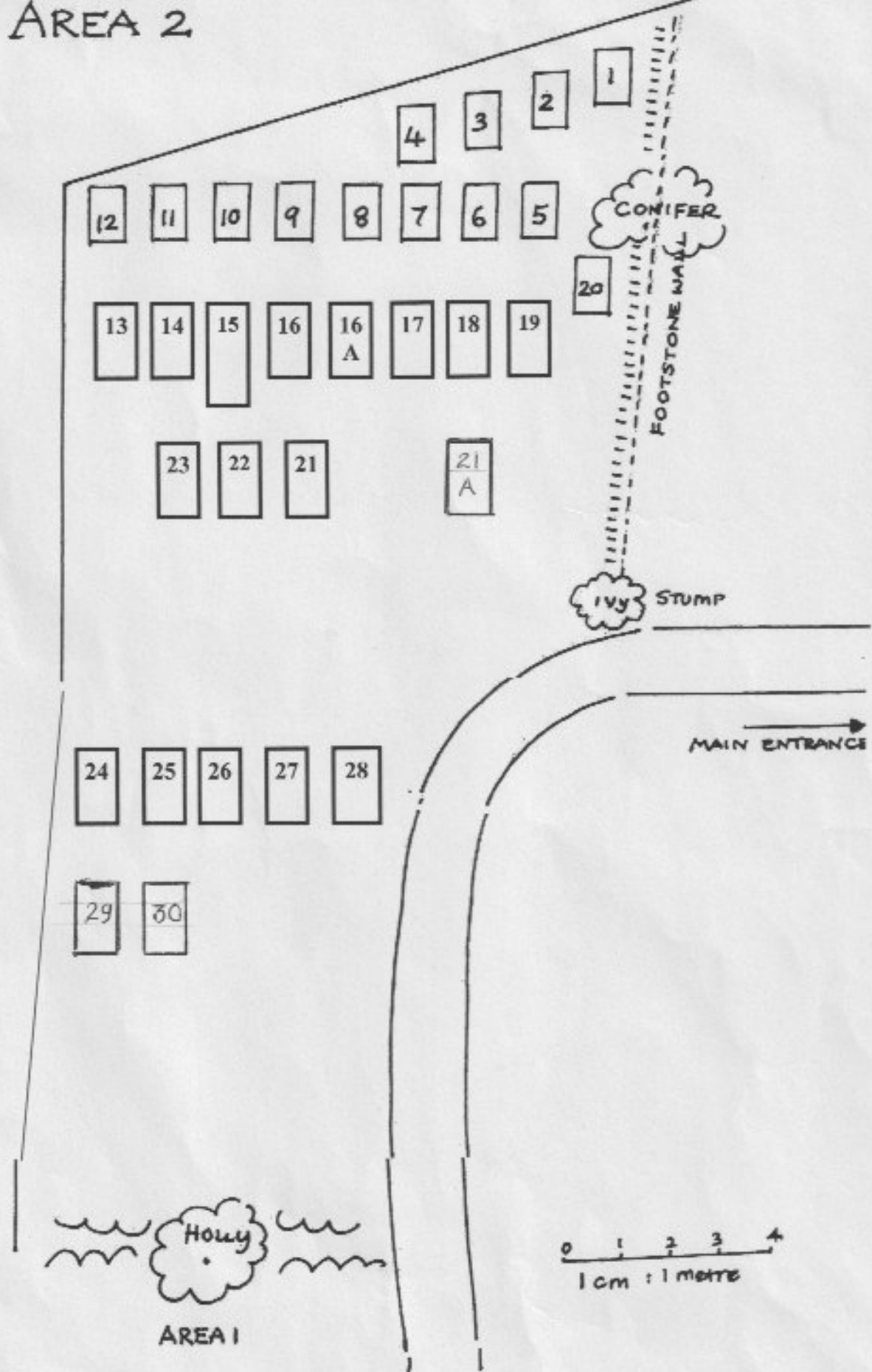
AREA 1



0 1 2 3 4
1cm : 1metre.

ENTRANCE GATE.

AREA 2



IVY STUMP

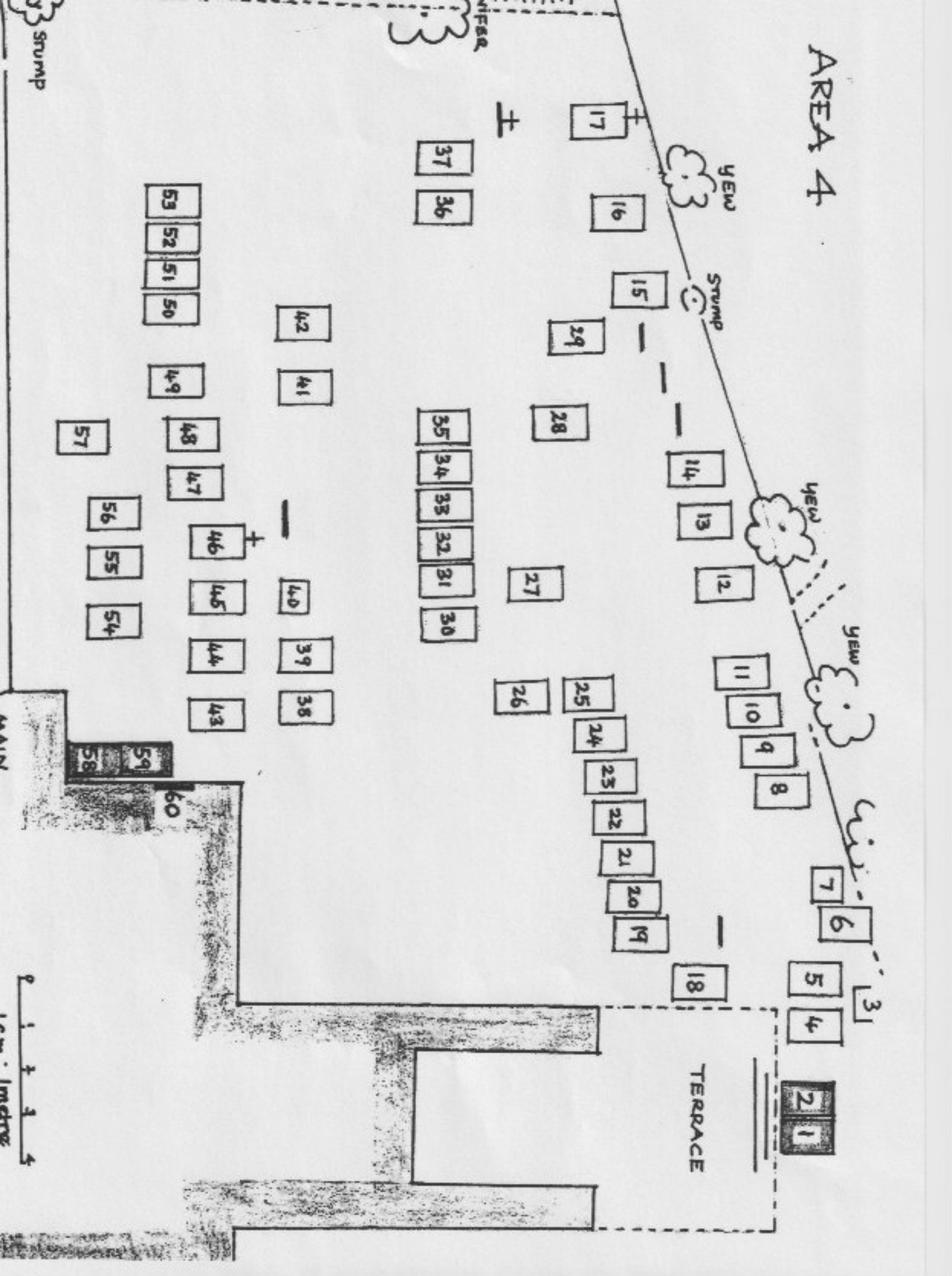
MAIN ENTRANCE



0 1 2 3 +
1cm : 1metre

ENTRANCE GATE

AREA 4



AREA 4

yew

yew

yew

Stump

TERRACE

53 52 51 50

49

48

47

46

45

44

43

56

55

54

59

58

60

37 36

17

16

15

29

28

35

34

33

32

31

30

27

26

25

24

23

22

21

20

19

18

11

10

9

8

14

13

12

7

6

5

4

2 1

3

stump

AREA 4

10 meters

MAIN

