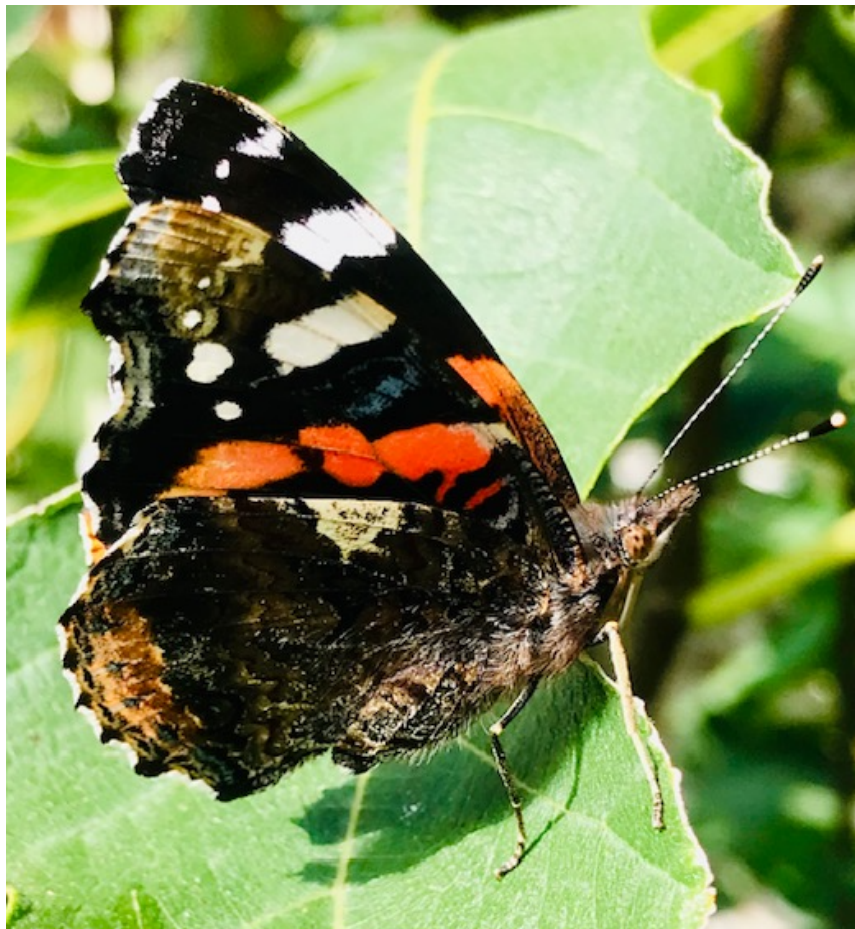


A Magazine
For the Villages of Folkington, Milton
Street and Wilmington



October 2023

£1

**SAINT MARY AND SAINT PETER
WILMINGTON**

PRIESTS

**The Reverend Peter Blee
01323 870 512**

**The Reverend Shirley Pearce
01323 318 231.**

CHURCH WARDENS

In Vacancies

Dates and Events for Your Diary

30th September	"Excellence in Wood" Exhibition	10.00 am
30th September	A Concert by the VINSLOV Church Choir	3.45 for 4 pm
10th October	Arlington Village Market and Coffee Morning	10.00 am
14th October	Eric Ravillious - "Drawn to War"	7.30 pm
28th October	Poppy Appeal Collection Begins	
3rd November	Long Man Parish Council (LMPC) Greeting Hour	6.30 pm
3rd November	Film: "A Bit of a Carry On"	7.30 pm
13th November	Long Man Parish Council (LMPC) Meeting	7.00 pm

FROM THE PARSONAGE

We could say that our lives are formed by four principle relationships. These are; our relationship with others, our relationship with ourselves, our relationship with the natural world and our relationship with God. For those who don't believe in God but consider themselves spiritual they may choose to talk about 'a sense of something greater than themselves' or 'moments of awareness of a transcendent dimension'. It is reported that most people say they have a 'spiritual' dimension but aren't necessarily religious

We can think of the differing importance that each of these plays in different people's lives amongst those who we know. In the Christian tradition there is an emphasis on putting others before ourselves but its balanced by the need also to love ourselves; 'love your neighbour as yourself'. Matt 12:31. And in the matter of our relationship with others it places forgiveness as an essential act – both forgiving others and seeking forgiveness ourselves. 'But whoever has been forgiven little, loves little' Luke 7:47. Forgiveness is a healing action which can be applied to each of these four relationships.

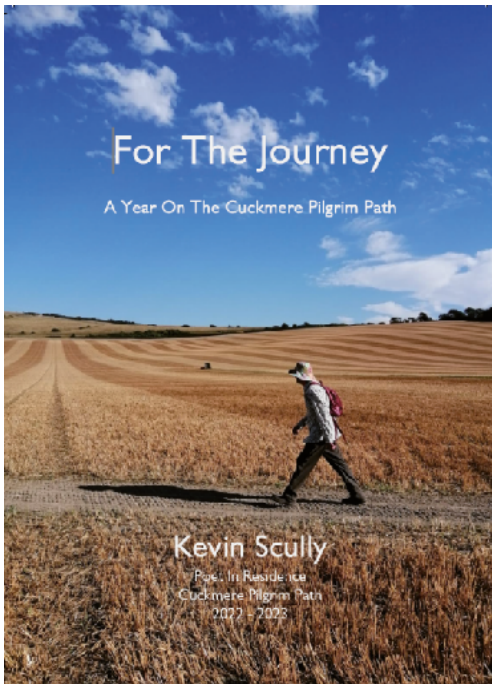
The Cuckmere Pilgrim Path provides an opportunity to exercise mind, body and spirit and to do so in relation to these four relationships and in the spirit of seeking forgiveness and reconciliation in each. Walking on our own and putting aside the business of life provides the space for us to connect with ourselves again.

Walking with others opens up conversations and strengthens our relationship with them. Walking through the landscape, feeling the ground beneath our feet, enjoying the beauty of the landscape reconnects us with the natural world. And the churches provide places where we can be reminded of the importance of our spiritual life in community and our relationship with God, with that which is greater than ourselves and which transcends all and connects everything in space and time.

Last year we appointed a Poet In Residence, Kevin Scully, for the Cuckmere Pilgrim Path. His tenure concluded in July with the publication of a pamphlet of poems titled 'For The Journey'. This is now available – see Kevin's article. Last month we appointed a new Poet In Residence, Antony Mair. He will be organising workshops and other events over the course of the year. Poetry expresses our deeper thoughts and feelings and through our imagination awakens our spiritual life. The Poet In Residence is one of the ways that we're developing the Cuckmere Pilgrim Path to help people make the most of their walk as a reflective and creative experience that touches the spirit and fosters reconciliation in these four important relationships in life.

Peter Blee

KEVIN SCULLY - FOR THE JOURNEY - A POETRY PAMPHLET BY THE INAUGURAL POET IN RESIDENCE OF THE CUCKMERE PILGRIM PATH



This collection of 17 poems is the fruit of a year's residency on the Pilgrim Path which was established five years ago by The Revd Peter Blee.

The first two poems, 'Pilgrim' and 'For The Journey' act as preparatory texts which can be read before setting out on the path which takes in seven churches in two Sussex benefices.

The book can be used as a companion to the walk, or allow people to travel the terrain from their armchair.

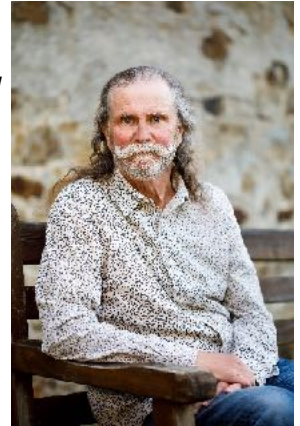
While the poems trace this trip from Berwick, with its astounding Bloomsbury Group paintings, pilgrims can begin by selecting their starting point at Alfriston, Lullington, Wilmington, Arlington, Selmeston or Alciston.

There are a number of features in the churches and at places on the way, such as the Wilmington Long Man, captured in various forms.

Scully spent a year in and about the path, organising a number of events and workshops, and has set out to show the diversity of pilgrimage in the people and places he encounters. Mark Oakley, author of the Ramsey prize winning book, *The Splash of Words*, writes:

'Kevin Scully's poems work like sandpaper to the soul. Unafraid to embrace the disquiet of both inner and outer landscapes, he nevertheless leads to places of epiphany and radiance. Alerting us to the locality of his residency, he makes the heart local to us too, provoking to wonder at rumours of transcendence.'

The collection also contains some notes on the poems that cast light on some aspects of the pieces.



The book is on sale at Berwick Church or on line from Beach Hut Books:

https://www.abebooks.com/servlet/SearchResults?an=kevin%20scully&bi=0&cm_sp=SearchF_-_sf_-_

[Results&ds=30&sortby=17&sts=t&tn=for%20the%20journey&vci=1276897](https://www.abebooks.com/servlet/SearchResults?an=kevin%20scully&bi=0&cm_sp=SearchF_-_sf_-_Results&ds=30&sortby=17&sts=t&tn=for%20the%20journey&vci=1276897)

Scully has been succeeded as Poet in Residence by the Hastings based poet, Antony Mair.

Peter Blee

ARLINGTON VILLAGE MARKET AND COFFEE MORNING

The next Arlington Village Market & Coffee Morning will be on Tuesday 10th October from 10-12 at Arlington Village Hall. All are welcome, we will be pleased to see you. There will be fresh bread, cakes, quiches, local eggs, other regular stalls and refreshments. Arlington's Pop-Up Museum will also be taking place at the same time.

October's focus will be 'Arlington & Upper Dicker Women's Institute'. Thank you to all who regularly come to support this community event, please bring your friends, and if you have not visited before you will be very welcome. At the September market the village hall was buzzing again with people chatting, visiting stalls and browsing in the museum which featured St. Pancras Church, Arlington. It was lovely to see so many faces from the village and also past residents of Arlington.

For further market information contact Anne Hope, T: 01323 486219, E: anntonyhope@gmail.com or the museum Wendy Holmes 07889 689844, E: talkingteapot@yahoo.co.uk

The Historic Publican

Grogshop News 19

We build our character from the bricks of habit we pile up day by day.

Anon



When I was a little boy in the 50s there was a fund-raising effort to complete Guildford Cathedral - begun in 1932, built entirely from bricks but unfinished due to escalating costs and war-time restrictions. Led by Miss Eleanor Iredale over a 10 year period, her 'Buy-a-Brick' campaign came to the rescue. Over one million bricks were required to complete the nave so she decided to sell bricks to ordinary people for 2s 6d (equivalent to over £4 now) on which they could inscribe their name, or the name of a loved one.

Before the war, the bricks had been made by Guildford Brick Works from clay removed on site. After the war, when they had ceased trading, the remaining bricks were made by a brickmaker in Beare Green, Sussex. More than 200,000 people subscribed, including school children across Surrey like myself, who clubbed together to buy an inscribed brick. The cathedral was finally completed in 1965, albeit with a very slight colour variation in the bricks.

Did you know that Wilmington once made its own bricks? Bricks were heavy and expensive to transport so wherever possible, bricks tended to be made locally. Our brickyard was at the corner of Bayley's Lane on the Wilmington boundary - map reference TQ 553 070 - which puts it at Wilmington Green. In existence by 1803 and thriving as The Wilmington Brick Company between 1930 and 1951, our bricks were stamped with a representation of our very own Long Man of Wilmington. Sadly, the brickyard and kiln closed in the mid 50s and like the Guildford Brick Works, faded into history.

Wouldn't it be fantastic to find a monographed Wilmington brick? With the Turner prize coming to Eastbourne later this year I thought we could create a Carl

Andre art installation (him of the Tate Gallery bricks) at the pub and call it errr, 'Wilmington Brick, unfinished artwork'. *Scotch-on-the-Rocks please!*

Some of our houses will undoubtedly have used Wilmington bricks in their construction, so if anybody brings one in I'll give them a Wilmington Pie.

All in all, you're just another brick in the wall.

Pink Floyd

Wrap up warm,
Wash your hands,
God Bless The Queen and
God Help The King!

Peter Bridgewater
Long Man Inn
077154900967

FAMILY SUPPORT WORK (FSW) SEPTEMBER 2023 UPDATE

Dear Friends,

I seem to write this in every update, but we really are incredibly busy at the moment. With things returning to routine after the summer, our practitioners are hugely involved in very complex cases and trying to help families achieve lasting change in very challenging circumstances. Financial hardship, mental health issues and parenting challenges are the three most pressing problems at the moment, none of which are quick to resolve. We have received over 20 new referrals in the last month which we are having to put on waiting lists as demand is still exceeding our capacity.

Harvest season is upon us and we know that many of you will generously be collecting items for our foodbank, for which we send enormous thanks. Our stock levels are still pretty low so we are in need of most items. The attached flyer will hopefully be of help in this regard. If you would like a member of FSW staff to come and talk at a service or any other event then do let us know, as we would be delighted to do so if we can. Please contact the office on:

admin@familysupportwork.org.uk

if this is the case. IF you would like us to collect Harvest donations then please give us as much advance warning as possible as our van diary is already pretty full – please use the same email address as above.

We have recently introduced three new members of staff to the head office team – Jane Lyons, Alison Dewdney and Danni Stillwell. Jane and Alison are the new community engagement and volunteer co-ordinators for West and East Sussex respectively, who will be helping us to raise the profile of our work all over the county and encourage more people to volunteer with us. Danni is our digital fundraising apprentice, who will be supporting the fundraising team by increasing our profile online and finding new ways to reach out across social networks. This increase in the back-office team is much needed to support our expanded practitioner team, and we are delighted to have them all on board.

Thank you for all your continued support and prayers for our work.

August's work in numbers

201 individual visits and 1017 calls with families supporting 220 adults and 215 children
 17 supported meetings with other agencies
 53 group sessions held supporting 806 parents and 531 children
 127 food deliveries made

Prayer points

Pray for all the children who have started new schools recently, that to overcome any initial nerves quickly, and settle in to their new routines they are able.
 Pray for all of our families who are experiencing mental health difficulties and finding it so hard to access specialist support

Give thanks for new volunteers who have recently come forward to support our work, and pray that more people may take this step.

Nikki Kerr
FSW Director of Fundraising and Marketing

LONG MAN PARISH COUNCIL

Telephone: 07856 520699

Email: longmanclerk@gmail.com

Copies of all Long Man Parish Council's meeting minutes can be found on the Council's website at www.longmanpc.org

Long Man Parish Council (LMPC) is here to share information with the residents of Folkington, Milton Street and Wilmington, and to liaise on your behalf with other higher local authorities and associated contacts on any issues that you may need help with or advice on.

LMPC will be developing a new website over the coming months where it plans to bring together a useful One Stop resource with links and information for residents on everything important to do with the parish.

The site will also share some local history for those interested in the area, so if anyone has any written anecdotal accounts or any old photographs of village life that could be included on the new site "gallery" please contact the Clerk.

The next meeting of the council is on Monday 13th November 2023, 7.30pm at Wilmington Village Hall. A copy of the meeting Agenda will be published on village notice boards and the council's website www.longmanpc.org from Tuesday 7th November 2023.

Members of the public are most welcome to attend the council meeting, and there is a 15-minute Public Discussion item for people to express a view or ask a question on relevant matters on the agenda.

Details Of The Clerk for Long Man Parish Council Are:

If you would like to get in touch with the Parish Council about any issue, or to find out the details of your local elected representative, please contact the clerk Jeanne Peterson

Email: longmanclerk@gmail.com

Telephone: 07856 520699

Correspondence: Clerk, Long Man Parish Council, 42 Chichester Road, Seaford, BN25 2DL

The clerk's hours are part-time (7 hours a week) and your enquiry will be answered as soon as possible.



Royal British Legion Poppy Appeal - 28th October -11th November 2023

This year the house to house collections within our community will take place between the 28th October and the 11th November. Please give generously to this very worthwhile cause.

Thank you so much and Very Best wishes

Nigel Willson
Hon. Poppy Appeal Organiser

THE PUZZLES

We offer you two SUDOKU PUZZLES for OCTOBER 2023

Our Sudoku puzzles this month are graded as :

1: HARD &

2 : VERY CHALLENGING

				8		3	
	7		1			5	
	3	5				9	
		4	8		3		7
	9						1
3			4		1	2	
		3				7	2
	4				5		8
	1		6				

	8				4	2		3
				3			6	8
1								
	5			8				2
		1	7		6	4		
6				4			7	
								1
7	1			2				
5		3	8				2	

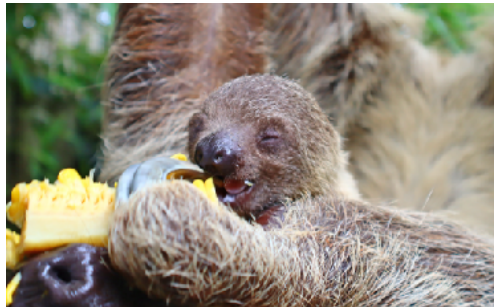
Zoo Visitor Captures Incredible Moment Sloth Gives Birth

When Erica Huggins and her family arrived for their first visit to Drusillas Zoo Park in Sussex, they hoped to be lucky enough to catch a glimpse of the sloths, but what happened far exceeded expectations as they witnessed a once-in-a-lifetime event – the incredible birth of a baby sloth. On 23rd August, Erica, her husband and their two children were exploring the zoo's walk-through enclosure when ex-veterinary nurse Erica noticed a 'glistening' whilst admiring the sloths and was quick to pull out her camera to capture the amazing moment.



Erica commented: *"We were looking forward to seeing the sloths as of all the parks we've visited this would be the first time we would experience seeing them in real life. We were excited to learn that we could walk through the enclosure and have a close-up encounter. As soon as we walked in we were informed to look straight up as the two adult Sloths were directly above us relaxing in the branches. The children struggled to see them up high and went off to explore the rest of the enclosure with my husband, whilst I stood back to take a closer look. Within a few moments, I noticed something was happening and called the children, my husband, and the member of staff over." "It was a privilege to witness the birth, the event has ignited a newfound admiration of sloths. My husband and I feel absolutely delighted to witness such a rare and important event. We hope mother and baby are doing well."*

Visitors and staff were stunned to see such a rare moment and the video captured shows the moments after the baby emerged and mum Halina tenderly licking her new infant clean. Sloth pregnancies are notoriously difficult to predict due to the anatomy of the sloth keeping abdomen swelling to a minimum and famously spend most of their time curled up in a big, hairy ball, so keepers at Drusillas (many of whom have worked with sloths for decades) have not themselves witnessed a sloth being born.



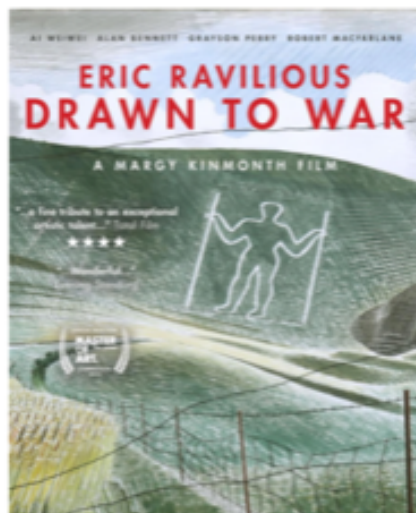
The new arrival is especially precious to the team at Drusillas who sadly and suddenly lost their infant sloth, Athena, at just six months old last year. Head Keeper, Gemma Romanis, added; "We are absolutely thrilled to bits to share this exciting news with you all, the new arrival is something we are immensely proud of as a team. Baby seems to be thriving under the careful watch of our keepers, and is doing everything it should be at this stage. Halina is being wonderfully attentive, and is more than happy for us to do our checks on baby when we need to. We don't yet know if it's a boy or a girl."

"We are so surprised that Halina chose to give birth right by the public walkway of her enclosure. It shows how comfortable and safe she must feel, and is testament to how respectful and lovely our visitors are when they come to see our sloths." The delightful youngster is already becoming a highlight for visitors lucky enough to catch a glimpse of her peacefully snuggled into mum, in one of the Zoos walkthrough enclosures.

As part of their commitment to conservation, in particular the conservation of sloths in the wild, Drusillas proudly supports The Sloth Conservation Foundation and ask visitors to support their mission in any way they can here <https://slothconservation.org/>.

Located just off the A27 in Alfriston, Drusillas Park is open daily from 10am. For more information please telephone 01323 874100 or visit www.drusillas.co.uk

Film Night at Wilmington Village Hall
Eric Ravillious: Drawn to War
Saturday 14th October
Bar opens at 7pm, film starts at 7.30pm
Tickets £6



The first feature film documentary about Eric Ravillious, who lost his life over Norway in 1942 while on commission as Official War Artist. Made with the blessing of the Ravillious Estate, his story is told in his own words through material drawn from previously unseen private correspondence and rare archive film. It recounts a compelling and enigmatic life set against the dramatic locations that inspired him - many of them in Sussex.



Buy your tickets at
<https://buytickets.at/wilmingtonvillageclub/991964>
(or via the QR code on the left)

Certificate: PG
Running time: 1hr 27min (though there will be an interval)

FRIDAY 3rd November

Wilmington Village Hall

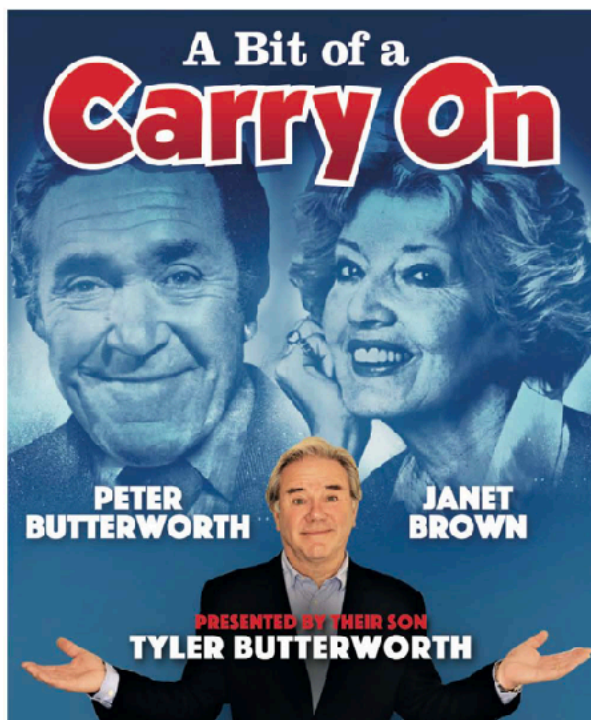
DOUBLE BILL!**6.30pm - 7.15pm****Meet the Long Man Parish Council**

Your Parish Council has some new faces and we'd like to say hello! Join us for an informal chat, with complimentary wine, soft drinks & nibbles, and get to know us. We have some new ideas but would really like to hear any questions or suggestions that you think need suggesting!

7.30pm - 9pm**A Bit of a Carry On**

With classic film & tv clips and rare photographs from his family's private collection, Milton Street resident Tyler Butterworth relates the funny, moving and unabashedly nostalgic story of his theatrical parents: his father, Carry On star Peter Butterworth who was also involved in the Great Escape in WW2; and his mother, the nation's first tv impressionist Janet Brown, famous for her remarkable impression of Mrs Thatcher - even playing the Iron Lady in the Bond film For Your Eyes Only. A fascinating evening of fun & laughter - DON'T MISS IT!

TICKETS: £10 - includes complimentary canapés. Pay Bar. All proceeds to the Village Hall.
Buy your tickets here: <https://buytickets.at/wilmingtonvillageclub/1009671>



LOCAL DIRECTORY

Arlington P.C.C. Secretary	Diana White	01323 870680
Wilmington P.C.C. Secretary	Ian Coombs	01323 870638
Chairman, Village Club	Ruth Zacharewicz	01323 871644
Wilmington Village Hall Bookings	Christine West	01323 870426
Wilmington Art Group (at Arlington now)	David Wilson	01323 506108
Clerk to Long Man Parish Council	Jeanne Petersen	07856 520699
Long Man Tree Warden	Alison Cotton	01323 871581
		07773 481492
Police Cover Team - Hailsham	Sgt. Howard Nevill	0845 6070999
Fly Tipping Inspector(?) Connects to Wealden Reception		01892 653311
		Ext. 2723
Magazine Editor (john@imacademic.com)	John Marshall	copy by email
East Sussex County Council	Lewes	0345 6080190
Member of Parliament	Maria Caulfield	
maria.caulfield.mp@parliament.uk		
County Councillor	Stephen Shing	01323 489265
Long Man District Councillor	Michael Lunn	07894 062727
	michael@michaellunn.co.uk	
Police Cover Team - Hailsham	Sgt. Howard Nevill	0845 6070999
Wealden District Council	Crowborough	01892 653111
	Hailsham	01323 443322
ESCC Highways		03456080193
Sargeant Mark Ritchie, Local Police	(mark.ritchie@sussex.pnn.police.uk)	
Police:	non emergency 101, emergency 999, voice mail 101 ext. 19028	
PCSOs Janine Daly and Liz McDonagh	07787 685751 or 101 or 01273 470101	



Ben Kilshaw Plumbing

A friendly and reliable service from a local qualified plumber

Leaky taps & burst pipes	Radiators & heating
Blockages, drains & gutters	Hot water cylinders
Toilets, sinks, showers & baths	Maintenance & repair
Bathroom design & installation	General pipe-work
Oil boiler breakdown & servicing	

From tap washers to en suites & everything in-between call:

07979 497225

Free estimates given

TREE WIZARD

TREE SURGERY & HEDGE CUTTING SPECIALIST

CALL 01323 872209



Tree Wizard is a fully qualified and insured local company based in Seaford. We have been trading since 2004 and pride ourselves on providing a professional and quality service to all our clients.

ALL FORMS OF TREE WORK UNDERTAKEN

★ FORMATIVE PRUNING ★ FELLING ★ TPOS ★ STUMP REMOVAL
★ HEDGE MAINTENANCE ★ WOODCHIP

100% GREEN WASTE RECYCLED

CALL ALEX LUCAS FOR A WRITTEN QUOTE
01323 872209 / 07708 149274



01273 481020

57 High Street, Lewes, East Sussex, BN7 1XE

info@kingsframers.com

www.kingsframers.com

HUNTER
LANDSCAPES
OVER 25 YEARS EXPERIENCE

**ALL
GARDEN
DESIGN,
CONSTRUCTION
and
MAINTENANCE**

L. Hunter N. Hunter

18 KAMMOND AVENUE,
SEAFORD,
E.SUSSEX
BN25 3JL

Tel: SEAFORD (01323) 898401
NEWHAVEN (01273) 516640
PEACEHAVEN (01273) 587296
SEAFORD (01323) 893025
Mobile: 07885 474424

ANIMAL MAGIC

PET CARE SERVICE

Dog walking

Home visits for dog/cat/rabbit/chicken feeding

Day crèche for dogs. Holiday cover.

Dog boarding in our family home.

Help with horses or any farm animal.

Experienced with excellent references.

CRB police checked and Insured.

01323 870770

wasps rats
squirrels mice
pigeons gulls
fleas
clothes/carpet moths

**Woodworm Services
Bird Proofing**

- Over 20 years experience
- Fully insured
- Unmarked vehicles
- Domestic & commercial
- Property Care Association trained technician

go pest

info@gopest.co.uk

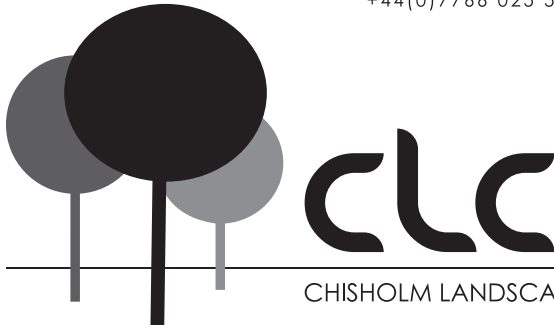
01323 811011

01273 476000

07852 427201

LANDSCAPING | GROUNDWORKS | TREE SURGERY | MACHINERY HIRE | FENCING

+44(0)7766 025 573 | INFO@CLC-LTD.UK | WWW.CLC-LTD.UK



HARDWOOD SEASONED LOGS

1m³	£95
1.5m³	£125
2m³	£165
3m³	£225

CHISHOLM LANDSCAPE CONTRACTORS LTD

**Oliver
Sweeps**

Friendly Reliable
Chimney and Flue Sweep
Trained by The Institute of
Chimney Sweeps



Contact: Oliver
07510191540
oliversweeps@gmail.com

Servicing
Eastbourne and
Surrounding Areas

CHRIS BONUS

Alfriston based plumber
Tap Washers to Bathrooms
Specialising in Kitchens, Power Showers,
Wet Rooms and Bathroom Installations
Excellent References
01323 870770



Support with
Confidence
ALTERNATIVE
EAST SUSSEX COMMUNITY COUNCIL

Home and Pet Care Specialist

(Incorporating Book a Cook & Gorgeous Gardens)



NEW Catering in the comfort of your own home



NEW Lawn cutting, Weeding, Trimming etc.



Transportation to the Shops, Doctor
or Hairdresser



Pet Feeding, Dog Walking, Pet/House Sitting
and Animal Boarding



Household chores



E.F.L. Coaching also available



Home Car Valeting Service

Reasonable rates (including weekends)

Fully Insured & D.B.S. Checked (references available)

Regular or Occasional

Tel: 01323 648179 Mobile: 07962 208847

www.eastsussex1space.co.uk

www.facebook.com/choresandpaws

Email: choresandpaws1@btinternet.com

D. NOWICKI

Painting and Decorating

Artexing and Plastering

**Interior and Exterior,
with over 25 years
experience.**

**Fully insured,
references available**

Tel: 01323 490528

Mob: 07971 271861

E-mail: nowicki@talktalk.net



£6.90

Folkington, East Sussex a Village History

by Eric Beavis, revised by Hilary Beavis

Revised edition to update research in 1986. Historical charts record the village as peaceful and tranquil within the South Downs National Park. Descriptions of the Church and Churchyard with its notable memorials to the cookery writer Elizabeth David and the harpsicord player Violet Gordon Woodhouse are included.

A section added outlines changes that have occurred over four decades within the A27 boundaries of the South Downs National Park.



To buy a copy of the book please e-mail
Beavis401@btinternet.com for an Order form

NORVETT

E L E C T R O N I C S



Established 1955

Your local electrical contractors for domestic and commercial wiring,
installation and repairs.

Home automation & cinema.

ALFRISTON
(01323) 870485

enquire@norvett.com

www.norvett.com



Wishes in Stiches

Your Village Seamstress



For all Mending and Alterations

Offering Same-Day Hemming Service

– Drop Off in the Morning & Pick up in the evening

Contact Angie 075 7000 6195 (preferably text OR whatsapp)



JUST in TIME LOCAL CARE SERVICES

Justine Coley

Support with Confidence Accredited
Member

| Personal Assistant

07910148213

justintimelocalcareservices@gmail.com

Abbeyfield in Alfriston

Security, independence and peace of mind

- Company and Support
- Fresh home cooked meals included
- Independence, privacy and choice
- Your own private studio accommodation
- Clear all inclusive pricing

We are also in Eastbourne, Hove,
Heathfield & Tunbridge Wells.
Call us on 01323 870587
email alfriston@abbsd.co.uk
or visit www.abbsd.co.uk



Abbeyfield
South Downs
Making time for older people

Independent
Supported Living
for Older People



Together Stronger

We are pleased to announce that we have
now merged with Lawson Lewis Blakers in
Peacehaven, Eastbourne and Lewes.

Call us on 0800 84 94 101

OFFICES ACROSS THE SOUTH EAST



Lexcel
Legal Excellence Quality Award
Law Society Accredited

INVESTORS IN PEOPLE
We invest in people Silver

www.mayowynnebaxter.co.uk

PUZZLE SOLUTIONS

9	2	1	7	5	8	6	3	4
4	7	6	1	3	9	8	5	2
8	3	5	2	4	6	9	7	1
1	6	4	8	2	3	5	9	7
2	9	8	5	6	7	4	1	3
3	5	7	4	9	1	2	6	8
5	8	3	9	1	4	7	2	6
6	4	2	3	7	5	1	8	9
7	1	9	6	8	2	3	4	5

9	8	5	6	7	4	2	1	3
2	7	4	1	3	5	9	6	8
1	3	6	2	9	8	5	4	7
4	5	7	9	8	1	6	3	2
3	2	1	7	5	6	4	8	9
6	9	8	3	4	2	1	7	5
8	4	2	5	6	7	3	9	1
7	1	9	4	2	3	8	5	6
5	6	3	8	1	9	7	2	4

C.B.WINTER & SONS
TURF GROWERS AND LANDSCAPING PRODUCTS

WWW.CBWINTERANDSONS.COM

Call us on 01323 870459

TRUSTED SUPPLIERS OF:

Quality Turf & Topsoil, Natural Stone & Italian Porcelain

**NEW
FOR
2022**

**NEW LIGHT INDUSTRIAL UNITS AVAILABLE TO LET EARLY
2022 - email anthony@cbwinterandsons.com for more info!**

BERWICK POST OFFICE

Berwick Station

Sweets, Tobacco, Stationery,
Greetings Cards

SUPPORT YOUR LOCAL POST OFFICE

Daily: 9.00 - 1.00 & 2.15 - 5.00
Wednesdays and Saturdays: 9.00 - 12.00

ALFRISTON 870358

NOTES FROM SAINT PETER AD VINCULA - FOLKINGTON

Church Wardens
Mrs Sabrina Harcourt-Smith

01323 482 036

Mr Alan Best

01323 487 754

SERVICES IN OCTOBER AT FOLKINGTON

Sunday October 1st ~ 10.30am ~ Holy Communion with the Benefice Team ~ The Reverend Prebendary Stephen Stuckes/ Associate Priest ~ The Reverend Christyan James/ The Reverend Damien Brennan / Pastoral Minister Mrs Kelly Ellis ~ Animal Welfare Sunday / Anglican Society for the Welfare of Animals ~ Dedication Festival

Sunday October 8th - 10.30am - Harvest Festival and Thanksgiving with The Reverend Malcolm Elwis

Sunday October 15th- 10.30 am- BCP Mattins with The Reverend Damien Brennan

Sunday October 22nd-10.30am - BCP Mattins with The Reverend Neville Manning

Sunday October 29th- 10am - United Benefice Service of Holy Communion at West Dean Church with The Benefice Team -All welcome for refreshments after the Service -

Saint Peter's continues to be open for prayer on Wednesday to Friday and Sunday, and for part of Saturday.

EARLY AUTUMN NEWS **From Saint Peter's Church, Folkington**

The late summer days of August and early September at Saint Peter's have flown by with many visitors, both on bicycles from the new pathway at the bottom of Folkington Lane, walkers from the Wealdway, on which we are a stopping place, and those coming through Church Wood from the Downs. We welcome them all, to enjoy resting in the porch or in the cool and quiet inside the church. We hope that they will find respite in the Prayer Corner and Reading Pew, inspiration and interest from our fine monuments and even enjoy browsing books for sale in aid of the church.

On the second Sunday of September, the 9th, St.Peter's was a hive of activity when we took part in the RIDE and STRIDE day. This event happens once a year in Places of Worship throughout the country in aid of restoration funds for the many county Historic Churches Trusts. Here in Sussex we are lucky enough to have the support of local Sussex Historic Churches Trust under their distinguished Committee and Chairman Christopher Whittick DL, FSA. Their generosity to our restoration works over the past 25 and more years has been wonderful. On this day, sponsored walkers from other churches were recorded. Our Recorders (also sponsored) were Karen Bailey, Cheryl, Charles Harcourt-Smith and Alan Best. Supporters in the church included many parishioners. We welcomed our own Rector Stephen who had walked and run all the way from Alfriston! A bonus for St Peter's was that neighbouring Folkington Place next to the church held an open day in their attractive garden for the Friends of Eastbourne Hospital. Their many visitors joined us in the church, happily buying books, plants and enjoying our teas.



The monies raised from the whole event go to the Sussex Historic Churches Trust who return half to us and invest the rest for future grant giving. The amount will not be known until November at the earliest. We were and are most happy to share the Ride and Stride day with The Friends of Eastbourne Hospital at Folkington Place.

OCTOBER DATES FOR YOUR DIARIES!

SATURDAY SEPTEMBER 30th ~ at 3.45 for 4 pm

A CONCERT by the VINSLOV CHURCH CHOIR from VINSLOV, SKANE, SWEDEN
Vinslov Parish is in the Diocese of Lund, Church of Sweden, in Skane, Southern Sweden. The Parish contains four medieval churches of which Vinslov is the largest, having 18th-century additions. The Choir has around 20 singers under the direction of Choirmaster Lars Hedström.

Refreshments on arrival. Tickets will be free, but donations for the Restoration Fund will be much appreciated.

Vinslov is a rural parish in a group of four medieval churches in north-eastern Skane, in the south of Sweden. The cluster of these lovely ancient churches includes Gumlosa, the oldest brick building in Scandinavia, which was consecrated in 1194 by Archbishop Absalon, then Primate of all the Nordic countries. Vinslov's Church Choir has around 20 members under the leadership of choirmaster and organist Lars Hedstrom. They sing at Feast Day Services, normal church services, and concerts. The repertoire is fairly broad from Baroque to contemporary, including solemn church settings and Swedish folk songs.

Gunnar Ericsson, Second Bass

Tickets for this performance will be free and varied refreshments will be offered, but donations will be much welcomed towards our new and forthcoming Restoration programme. Please book your places with Eventbrite <https://www.eventbrite.co.uk/d/united-kingdom/free--music--events/?page=1>

Sunday October 1st ~ As well as our usual Service of Holy Communion on this first Sunday in the month, taken by one of the Benefice Team, we would like to remember that Animal Welfare Sunday can be celebrated on this day - the nearest Sunday to the day of Saint Francis on October 4th. The Anglican Society for the Welfare of Animals (ASWA) whose chief Patron is The Most Reverend Stephen Cottrell, Archbishop of York, and which is supported by other senior clerics and church leaders working hard to expedite important animal welfare issues, such as an end to factory farming and a Parliamentary ban on the cruel export of live animals. Magazines and leaflets for ASWA will be available in the church. 'Animal friendly Churches' are given a beautiful coloured stained - glass window with animals in it!

Sunday October 8th ~ HARVEST THANKSGIVING and FESTIVAL ~ 10.30am ~ Mattins to be taken by The Reverend Malcolm Elwis. As always at Harvest Thanksgiving, donations for the Eastbourne Foodbank run by the Trussell Trust will be welcomed. If possible these should be tins, cartons or boxes, teas, coffees in small jars, soups, pet foods - mostly cat and dog but hamster, Guinea pig and budgerigar can be included! Also needed are all toiletries such as toothpaste, toothbrushes, soaps, shower gels etc. The Trussell Trust are extremely grateful for all these items. Please bring them to the church and give to the churchwardens to keep secure and deliver to the Trust.

Remembrance Sunday ~ Sunday November 12th ~ 10.45 am to coincide with the Cenotaph Service

Alan Best and Sabrina Harcourt-Smith

We are continuing to save milk bottle tops, ribbons, cartridges and stamps for the Friends of Eastbourne Hospitals. Boxes can be found by the organ. Many thanks.

Benefice Services

October 1st

The Seventeenth After Trinity

9.30 am	Arlington ~ Holy Communion	Peter Blee
9.30 am	Selmeston ~ Holy Communion	Shirley Pearce
11.00 am	Berwick ~ Holy Communion	Shirley Pearce
11.00 am	Wilmington ~ Holy Communion	Peter Blee

October 8th

The Eighteenth After Trinity

9.30 am	Alciston.~ Holy Communion	Peter Blee
9.30 am	Arlington ~ Holy Communion	Shirley Pearce
11.00 am	Wilmington ~ Holy Communion	Shirley Pearce
11.00 am	Berwick ~ Holy Communion	Peter Blee

October 15th

The Nineteenth After Trinity

9.30 am	Arlington ~ Holy Communion	Shirley Pearce
9.30 am	Selmeston ~ Holy Communion	Peter Blee
11.00 am	Berwick ~ Holy Communion	Peter Blee
11.00 am	Wilmington ~ Holy Communion	Shirley Pearce

October 22nd

The Twentieth After Trinity

9.30 am	Arlington ~ Holy Communion	Shirley Pearce
9.30 am	Alciston ~ Holy Communion	Peter Blee
11.00 am	Berwick ~ Holy Communion	Peter Blee
11.00 am	Wilmington ~ Holy Communion	Shirley Pearce

October 29th

The Twenty First After Trinity

10.00 am	Wilmington ~ Benefice Service	Shirley Pearce
3.00 pm	Alciston ` Commemoration Service	Peter Blee

November 5th

The Twenty Second After Trinity

9.30 am	Arlington ~ Holy Communion	Peter Blee
9.30 am	Selmeston ~ Holy Communion	Shirley Pearce
11.00 am	Berwick ~ Holy Communion	Shirley Pearce
11.00 am	Wilmington ~ Holy Communion	Peter Blee

Pastoral Prayer or Talk

The Reverends Peter Blee and Shirley Pearce are available to speak to people on the phone and are also able to pray with people on request in church at Morning or Evening Prayer and to offer help in any way possible; telephones: 01323 870 512, 01323 318 231. or emails: peter.blee@berwickchurch.org.uk revshirleym@gmail.com .If you have any prayer requests please pass them on – they can either be kept confidential or included in intercessions at our online services. Suggestions and comments as to what is offered online or what might be offered in addition are welcomed.

Please note that these service details might well change!. Please look at the website (www.sussexdownlandchurches.org.uk) and check carefully on the Sunday link emails. If in any doubt please contact Jane Grutchfield: benefice.administrator@berwickchurch.org.uk

Our churches remain open for private prayer and reflection every day.