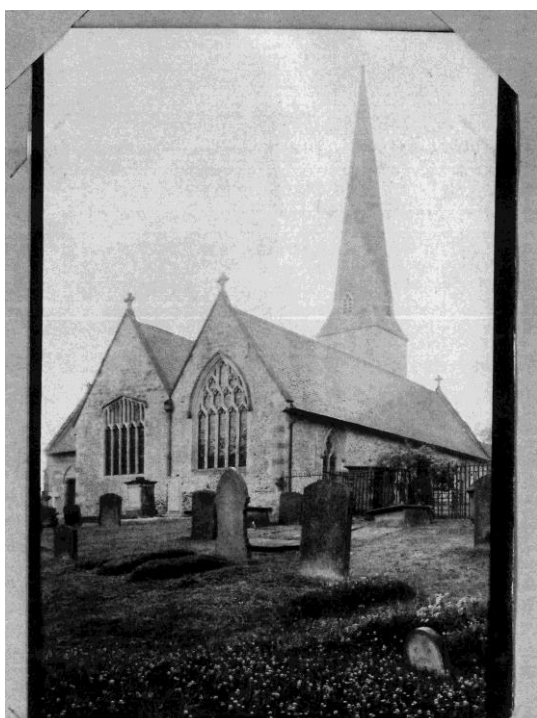


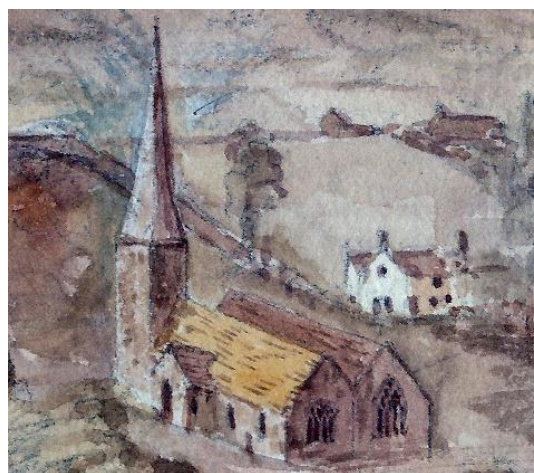
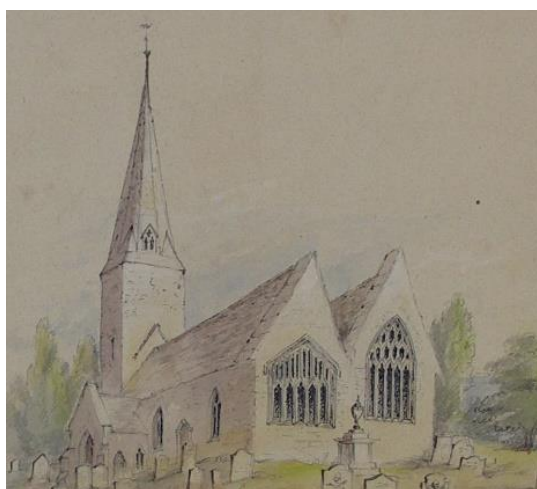
THE ROOFS



The two separate roofs were rebuilt in the 1870s restoration and are now of equal height, as per J P Seddon's plan above. Any original timbers seem to have been lost.



This view of the east end of the church was taken by the Royal Commission surveyors in 1927. The view is much the same as today except iron railings can still be seen around the graves - they were not removed until WWII.



Earlier paintings (see right above for 1849) show a scar on the eastern tower wall so the southern roof was originally higher. The view above right is unclear but almost suggests the roof was thatched, as does the view shown in item (3), the Tower and Spire. Possibly at that time it was covered in plants growing on the mossy stone roof tiles.

In 1739 1500 (sandstone) tiles from Treworgan in Llangarron were used on the roof and it cost 1s to clean up the churchyard after the tilers. There are odd mentions of roof repairs until the 1870s.