

Thameshead Benefice Deanery of Cirencester, Diocese of Gloucester

The churches of St Matthew, Coates; All Saints, Kemble; St Michael and All Angels, Poole Keynes; St Kenelm, Sapperton with St Luke, Frampton Mansell; St Peter, Rodmarton with St Osmund, Tarlton; All Saints, Somerford Keynes with All Saints, Shorncote



Lord,
We pray that you
will bring to our
family of parishes a
Shepherd who will
nourish, encourage
and guide your
people in this place.
Amen



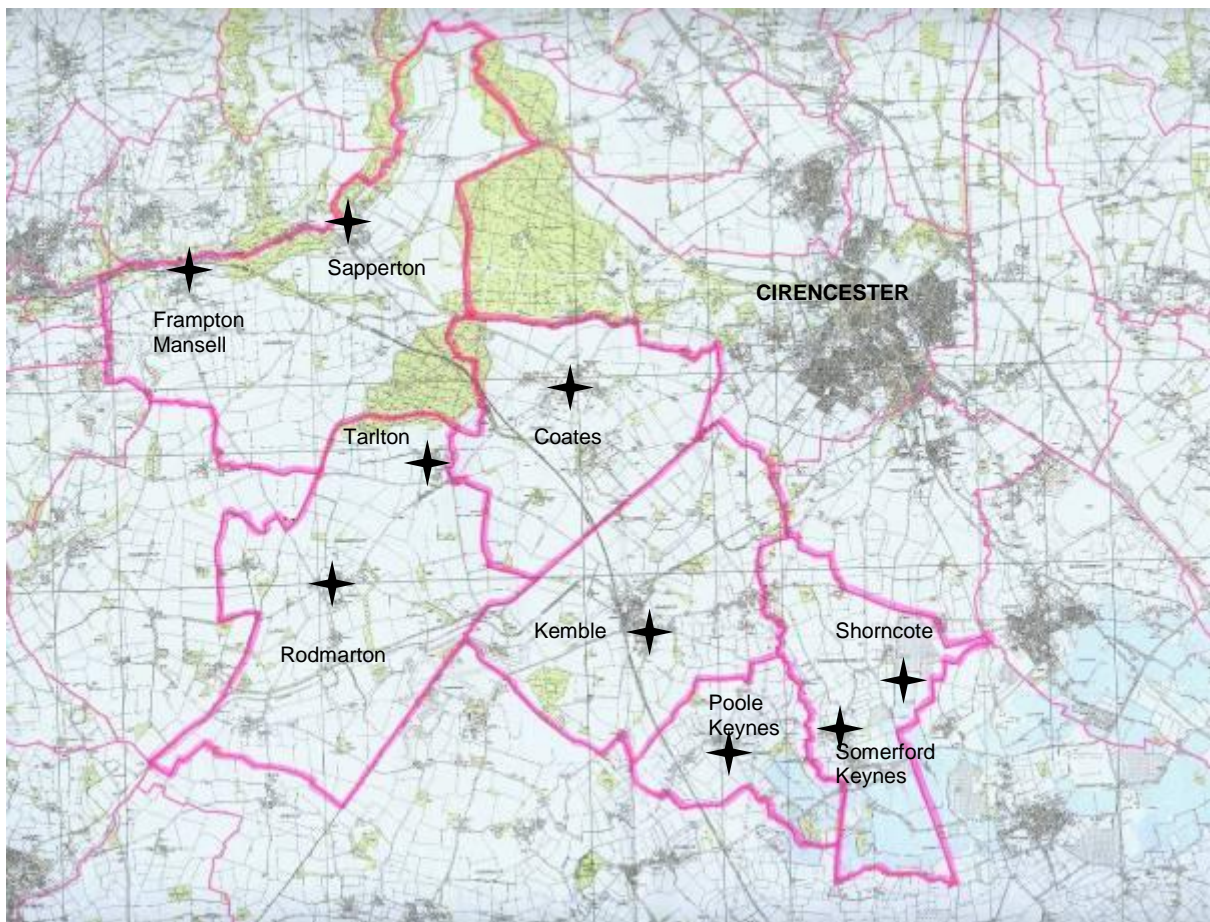
What We are Praying For

We are praying for a Priest who will share in the leadership of our churches, who will take us forward in Christ, ministering to all the people of our communities. We believe that the wide range of congregations and diversity of styles of worship, from the contemporary through to the Book of Common Prayer, are strengths that let us reach out to the whole community. We also feel that there are many benefits from working together to harness our different strengths to build up our worshipping communities and take the knowledge of Christ out into the world around us. We particularly feel that we would benefit from:

- † A leader rooted in prayer who will help people to pray.
- † A good teacher and thoughtful preacher, grounded in the sacraments, who can embrace and cherish different styles of worship from the traditional to 'fresh expressions of church' each in their appropriate time and place.
- † A mentor who will encourage those around them, releasing gifts, encouraging risk and helping to develop local ministry.
- † An able Pastor willing to sustain the place of the church in the local communities.
- † An ambassador for Christ who can reach out into our communities.

Where We Are

Seventy square miles of glorious Cotswold countryside close to the busy market town of Cirencester.





Thameshead Benefice

What We Are

The Thameshead Benefice is made up of six parishes, nine churches and 12 villages or hamlets in a lovely area of the Cotswolds, south and west of Cirencester, Gloucestershire. The Benefice is named Thameshead Benefice because the Thames rises in Coates and flows through the Benefice. Thameshead Benefice was formed by the amalgamation of the Watershed and Upper Thames Benefices in April 2006.

Our new logo represents our nine churches in six parishes as we seek to journey together with our saviour Jesus whilst Kemble's millennium window (below) reminds us of the refreshing life giving waters of the Holy Spirit.

The Places

This is a rural area with a number of relatively small communities and no large centres of population. However each of the villages supports a vibrant community with a range of different activities often based around the village hall.

The Communities

The Benefice population is approximately 3000 covering a wide range of age groups and social backgrounds, although not significantly ethnically diverse. Some are employed in agriculture, but the proximity of Swindon, Gloucester, Cheltenham and Bristol means that many work in these towns in a variety of professional and business occupations. There are a large number of commuters to Reading and London living in the area along with a number of second homes, including a growing development of holiday homes in the Cotswold Water Park near Somerford Keynes.



Parish Magazines

There are two Parish magazines produced by the churches in the Benefice. One covers Coates, Rodmarton with Tarlton, and Sapperton with Frampton Mansell. The other magazine covers Kemble, Poole Keynes and Somerford Keynes.

Who We Are

Our House for Duty Priest will be part of a team including:



† Revd Trevor Kemp who has been here for two years and lives in The Rectory, Coates. He worked in London before training at Trinity, Bristol and serving in Norwich and Southwark Diocese.



† Revd David Austin. He is presently self-supporting curate starting his third year here and lives in Somerford Keynes. Previously he was a Baptist Hospital Chaplain after leaving a career in the Police.



† Rev Pepita Walker was called to ministry late in life. She is a Local Ordained Minister with PTO, she lives in the parish of Sapperton with Frampton Mansell.



† Rev Mike Paget-Wilkes is a retired priest and Archdeacon who lives in Tarlton.



† Mr Barrie Cran is a Reader, he lives in Kemble and following a career in the Royal Navy now works in industry.



† Mrs Liz Collins is Reader in Training and lives in Kemble but worships in Poole Keynes. She will be licensed in September 2015 and works full time as a teacher.



† Anton Wynn is our half time Strategic Youth Minister supported by us through PSALMS (<http://www.psalms.uk.net/>) a local ministry partner with Scripture Union.



† Are you our House for Duty Priest, living in Kemble and sharing in the life and ministry of all our parishes.

The Wardens from all Parishes meet regularly to discuss matters of common interest and ministry at a Benefice level. There is also a small Benefice fund. While most of the activity within the Benefice is on a Parish basis, there are a number of activities where the Benefice family comes together. Last year we began a process of reflection to see how we can work better together and are currently discussing a formal Benefice Council with powers devolved from the PCCs. Our youth work provides an effective model for this with a Local Management Team driving strategy and allocating resources for the whole benefice.

Benefice Services

Each church has its own character and beauty. All have been and are well maintained and each village community deeply values its local church. In each parish there is a worshipping core community supplemented at major festivals by many more. At Christmas for example perhaps 25% of the population will come at some time to a Service.

Sunday worship

The pattern of Sunday worship across the Benefice is focused around services at 9.30am and 11am. There is considerable variety in worship, but each Parish will hold at least two Sunday Eucharistic Services, and at least one Family Service per month. In addition Rodmarton, Somerford Keynes and Kemble have 1662 Morning Prayer. At Tarlton there is an 8am Service of Holy Communion once a month according to the Book of Common Prayer. Generally speaking in all the churches (except Rodmarton and Tarlton where traditional language is preferred) there is both traditional and modern liturgy according to Common Worship.

Benefice Services – On the fifth Sunday of the month there is usually a Benefice Service, when all the churches come together for worship - and no other services are held.

Messy Church – In 2014 school which has been this into other family Club in Coates and our Keynes.



we launched Messy Church in Kemble very successful and we have linked activities in the benefice such as Farm Easter Activity Day in Somerford

Midweek worship

There is a 10am Service of Holy Communion on Wednesdays in Kemble and a monthly group in Frampton Mansell and for many years a faithful group has met every Tuesday morning to pray for Kemble parish.

Contemporary Worship

We hold a monthly informal evening Benefice Service called 'The Source' at All Saint's Church, Kemble. The format of worship varies but is characterised by more modern worship songs and a variety of preaching styles.

In addition, more recently 'The Filling Station' has provided another contemporary service for the whole area. Held at the Royal Agricultural University it is on the edge of the Benefice and is well supported by Thameshead members.

<http://www.thefillingstation.org.uk/1172/general/cirencester-has-a-filling-station/>



Learning Together

We have a mature bible study group meeting in Kemble on Wednesday evenings and a morning group for women called 'Time Out' who share, study and pray together. For Lent last year we started a Pilgrim Group that now has up to eleven members and look forward to further growth in the future

Youth and Children's Ministry

Working with a Stroud based Christian Charity called PSALMs, the Benefice funds 3 days a week support from a Strategic Youth Minister, Anton Wynn. This ministry is wide-ranging, covering the ages of 6 to 17. Anton works in all three primary schools, supported by teams from across the Benefice, providing lunchtime and after school PULSAR clubs. He also runs Club Pulse for year groups 6 to 9 on two Sundays a month and Pulse+ for older teenagers mid week.



Anton also supports family services and helps lead Messy Church and our associated activities. One of the key aims is to encourage and build sustainable ministry by encouraging lay leadership and confidence.

Association with Lee Abbey

Parishioners from across the parishes have enjoyed weekend visits to Lee Abbey most recently in May 2015 when 35 adults and children enjoyed being refreshed and revived. We deeply value the opportunity to go away together and will look to encourage increasing numbers to join us as building relationships and encouraging one another in our walk with Jesus is pivotal to effective discipleship.



Living Here

The Area

Sitting at the apex of a Triangle formed by Swindon, Bristol and Cirencester, the area has ready access to a wide variety of activities and amenities. Bristol airport is just over an hour away; Bristol, Bath, Swindon, Cheltenham and Gloucester are all within an hour's drive. The Benefice overlaps with the edge of the Cotswold Water Park and there are a wide variety of walks and cycle rides. The Thames Path long distance footpath starts in the Benefice following the river to London.

The Vicarage

Accommodates
four-bedroom



garden.

will be in Kemble. This is a modern detached house with lovely views and two minutes walk from the church. It has oil fired heating (as does the rest of the village) – and a medium sized secluded



Local Amenities



There is a shop/newsagent and full service Post Office in Kemble. Cirencester which is a large market town with a wide range of supermarkets, shops, banks etc. is only three miles away.

There are three Primary Schools of high standard in Sapperton, Rodmarton and Kemble. Sapperton has a Church Aided school. Good secondary schools exist in Cirencester, Stroud and Cheltenham.

There is a Doctor's surgery with a dispensary in Kemble.

There are Village Halls in every parish with many local activities such as a Rural Cinema which is held regularly in several. Amazing pubs and restaurants abound – many feature in the Gloucestershire and national Pub and restaurant guides.

Local tourist attractions include activities in the expanding water park facilities at Somerford Keynes whilst Fairford Airshow, Badminton Horse Trials and Cheltenham Races are all held



close by. The Cotswolds are a popular destination for walkers, cyclists and horse riders as well as other holidaymakers.

Our benefice includes many pathways varying from the steep valleys below Sapperton to the flat walks along the Thames Path. The area has historic connections too as Cirencester was a major Roman settlement and two of our villages in particular (Rodmarton and Sapperton) have strong connections with the 'arts and crafts' movement.

Kemble is home to the main railway station in the area with regular services to

Gloucester, Cheltenham, Swindon, Reading and London (London Paddington is 1 ¼ hours on a direct train).

Other public transport consists mainly of rural bus routes to and from Cirencester.

A car is essential because of the dispersed nature of the benefice, the need to cut across the main transport routes that radiate from Cirencester and the time allowed between services in different parishes.

Benefice Finances

From 2016 our Diocesan Contribution will be set for the benefice rather than individual parishes. We have established a Benefice Finance Group and have a benefice Treasurer. We are currently discussing how best to achieve the full payment requested. For some years the benefice has struggled to meet its target although most parishes have met their contribution. In 2014 we held a stewardship campaign that increased regular giving by over £10,000 pa. A very positive result, however it has created a surplus in some parishes whilst others continue to struggle. We are determined to move forward positively from this position to achieve longer term financial stability.

Our new Minister

We believe that God is calling someone to join us. We have seen God answering prayer and bringing new and vibrant gifts into our community, we are seeing people respond to the need for financial stability and we are seeing new opportunities open in our schools and villages. We believe God is at work among us and we want to respond to that call. We want to see people grow in faith and knowledge. We want to grow disciples in this place, people from all backgrounds excited to be called the children of God. We want you to be excited by that too. We could make a long list of gifts that would be useful (we started with a few ideas) but you don't have them all, so most of all we want your passion for Jesus. If you are musical, wonderful. If you preach repentance like Jonah, fantastic. If you will love with us and share your faith with us, offer your gifts with us and journey with us that is all we ask. Every ministry is difficult, every ministry is full of challenge and this is no exception. Whilst living in Kemble we expect you to engage across the whole benefice as a valued member of our team and congregation and in return we will pray for you and with you and do our best to support you as we work together to make the love and life of God present in this place.

June 2015

Appendix

Typical Monthly Sunday Services

Months Vary - this is June 2015 as an example

Sunday	Parish	Time	Type / Liturgy
1 st in Month	Coates	11:00	Holy Communion (usually 9:30)
	Kemble	09:30	Holy Communion
	Poole Keynes	11:00	Family Service
	Somerford Keynes	11:00	Morning Prayer (BCP)
	Rodmarton	11:00	Holy Communion
	Sapperton	11:00	Family Holy Communion
2 nd in Month	Coates	09:30	Holy Communion
	Kemble	09:30	Family Service
	Poole Keynes	09:30	Holy Communion
	Somerford Keynes	11:00	Holy Communion
	Rodmarton	11:00	Mattins(BCP)
	Tarlton	11:00	Holy Communion by extension
	Frampton Mansell	11:00	Holy Communion
3 rd in Month	Coates	09:30	Family Service
	Kemble	09:30	Holy Communion
	Poole Keynes	11:00	Morning Prayer
	Somerford Keynes	11:00	Family Service
	Rodmarton	11:00	Holy Communion (BCP)
	Frampton Mansell	09:30	Family Service
4 th in Month	Tarlton	08:00	Holy Communion (BCP)
	Coates	09:30	Holy Communion
	Kemble	09:30	Family Holy Communion
	Poole Keynes	09:30	Holy Communion
	Somerford Keynes	11:00	Holy Communion
	Rodmarton	11:00	Family Service
	Frampton Mansell	11:00	Holy Communion
	Kemble	18:00	The Source (Benefice wide non-liturgical service)
5 th in Month	(in rotation)	1000	United Benefice Service

Population and Congregation Statistics

Parish	Census (2011)	Electoral Roll	Average Congregation	Peak Congregation (Festivals etc)
Coates	492	50	20+	50-60
Kemble	1015	115	35	100-125
Poole Keynes	189	33	10	56
Somerford Keynes	418	66	15	90-100
Rodmarton & Tarlton	360	53	10	50-60
Sapperton & Frampton Mansell	440	44	15-20	90-100