



Put yourself at the heart and
soul of our community

EAGLESHAM PARISH CHURCH PROFILE





The beautiful centrepiece in the ceiling of Eaglesham Parish Church

CONTENTS

1 Our Vision

2 Eaglesham

The Parish
History
The Church
The Halls
The Manse

Outreach
Pastoral Care and Fellowship
Admin
Faith Development
Youth Strategy
Youth Worker
Church halls lets and
community organisations

3 Facts & Figures

Finance

6 21st Century Buildings Fit For Our New Minister

4 Worship

7 Lockdown And Beyond...

5 Church Organisations

The Kirk Session

8 The Vacancy



The Sanctuary is situated in a prominent place right in the heart of the community of Eaglesham

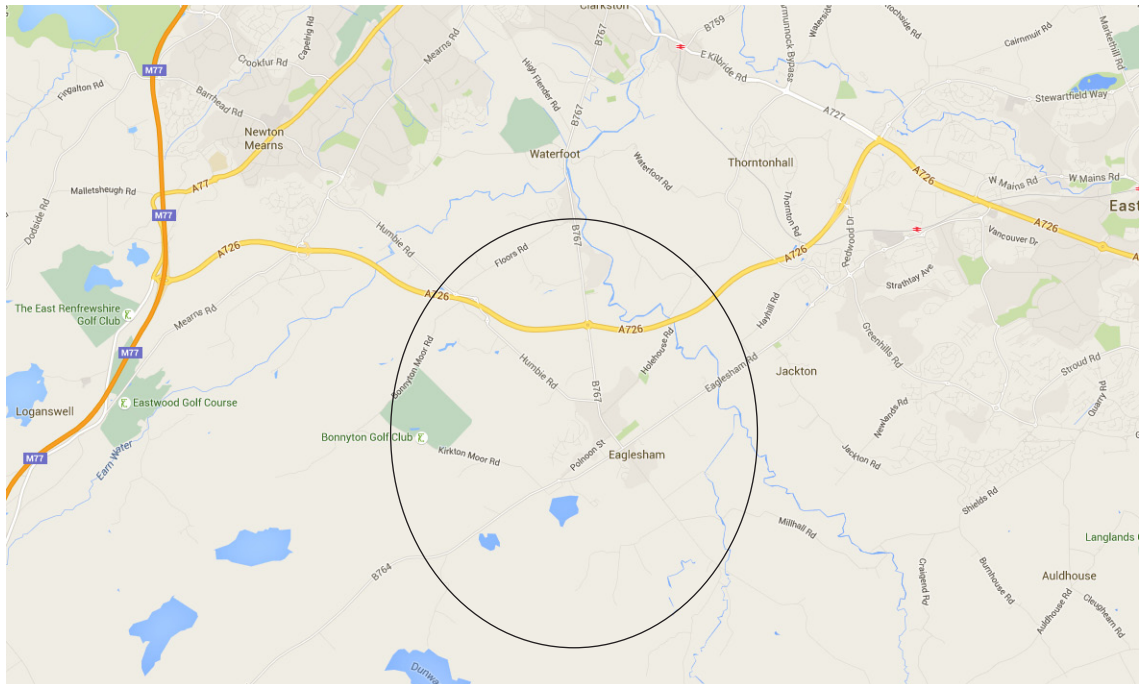
1 OUR VISION

Our **vision** as
a congregation
is to **promote**
Christ's Church
at the **heart** of
the **local** and
worldwide
community

Eaglesham Parish
Church – vibrant in
the community and
the wider world



2 EAGLESHAM



THE PARISH

The Parish of Eaglesham (pronounced Eagles-ham) lies nine miles south of Glasgow and has a population of 4,500.

There are two main centres of population within the parish - Eaglesham village and a large proportion of the community of Waterfoot.

The primary school is in Eaglesham and the local secondary school, Mearns Castle, is in the neighbouring parish of Maxwell Mearns. Both have long-established, excellent, academic reputations. Despite its proximity to Newton Mearns and East Kilbride, Eaglesham retains its own strong sense of place.

The parish includes farmland and moorland to the south and east. Although a number of locals are employed in the area, the majority commute to Glasgow and Lanarkshire.

The Glasgow Southern Orbital road opened in May 2005, diverting heavy traffic from the village and restoring tranquillity to Eaglesham. A bonus is that it also provides easy motoring access to the wider area. Another major change has been the development of Whitelee Windfarm - Europe's largest onshore windfarm - which draws many visitors to the area.

St Bridget's Roman Catholic Church is the only other church in the village. There are other Church of Scotland charges as well as Baptist, Episcopal and Evangelical churches in the surrounding areas.



Eaglesham Parish Church, seen here from across the 'Orry' is a local landmark

HISTORY

The community of Eaglesham dates back to at least the 12th century and possibly earlier.

In the late 18th century, Alexander Earl of Eglinton created a new plan for the village. The old village was demolished and the new one built around the "Orry" - the A-shaped park at the centre of Eaglesham.

The village has expanded significantly due to 20th and 21st century housing developments. The present community has pride in the uniqueness of the village, including its Covenanting history and its status as Scotland's first conservation village.

THE CHURCH

Eaglesham Parish Church is undoubtedly a landmark within the village.

Designed by Robert McLachlane and completed in 1790, it was originally octagonal in shape and changed to its present form in 1882. The interior of the Church features traditional pews, pulpit and chancel. The balcony houses a fine Father Willis organ and there is also a modern digital piano and keyboard within the sanctuary. Modernisations have included an induction loop system, disabled access and toilet and a video camera and projector system.

THE HALLS

The halls come from amalgamations of the Carswell Presbyterian Church, the Free Church and Eaglesham Old Parish Church. All halls are well used throughout the week by various Church-related organisations and commercial lets.

Carswell Centre

Prior to our last vacancy, significant investment was made into the old Carswell Church building to make it fit for a 21st century church and the community. This is a major asset to the church and has to its rear significant grounds and the BB garage accommodating the BB van.

Laird Hall/BB Club Room

This building has also undergone a major renovation in the last decade, with revamped kitchen and toilet

facilities. The rooms are used for more active pursuits, for example Boys' Brigade, badminton and Kids Time Out (after school care).

The BB Company have a Club Room at the back of the Laird Hall, again with extensive grounds to the rear.

THE MANSE

The most modern of all Church properties, the Manse was built in 1992 and is a well-appointed, good-sized, family home with gas-fired central heating.

The accommodation comprises a large lounge with gas fireplace and connected dining room that can be partitioned and used separately.

There is an L-shaped hall with a walk-in cupboard and small toilet and cloakroom for visitors' use. There is also an office/small sitting room and a large kitchen complete

with gas range cooker, dish washer, fridge freezer and walk-in larder.

A utility room houses a washing machine, dryer, drying cupboard and walk-in boiler room/cupboard, all with tiled self-draining flooring. Next to the back door, there is another small toilet.

There are four bedrooms - one en suite - as well as a family bathroom. Outside, there is a large walled courtyard with a single brick garage and storage room and a large enclosed garden at the rear.

Occupants of the manse are assigned an elder for pastoral care. The manse is situated a short walk from the Church and within easy reach of local amenities.

All Church properties are well maintained on a regular basis by the excellent team of volunteers who form the Fabric Group.



The Laird Hall, above left, has been upgraded to make it more useful. The Manse, above right, is our most modern property

3 FACTS & FIGURES

	2017	2018	2019
NUMBER ON ROLL (AS AT 1 JANUARY)	502	490	481
NEW MEMBERS	3	5	4
NUMBER OF BAPTISMS	3	5	6
NUMBER OF WEDDINGS	1	1	1
NUMBER OF FUNERALS	15	11	5
NUMBER OF ELDERS (MALE/FEMALE RATIO)	45 26/19	42 24/18	50 28/22
ATTENDANCE AT WORSHIP AVERAGE	100-120		

6 EAGLESHAM PARISH CHURCH PROFILE

FINANCE

The Admin Team monitors the day-to-day financial affairs of the Church, with major decisions taken/ratified by the Kirk Session as Trustees.

Both Session and Admin regularly review our income and expenditure

against budget. We have a small budget deficit this year but we anticipate that we will improve on our figures.

We have reserves to cover fabric and general unexpected expenditure and it is anticipated that our income may increase in the years ahead following the

completion of the Carswell Halls project.

We regularly meet our commitments to the central Church and Presbytery. There is a restricted fund for the employment of our Youth Worker, which is sustained by regular contributions from some Church members and organisations.

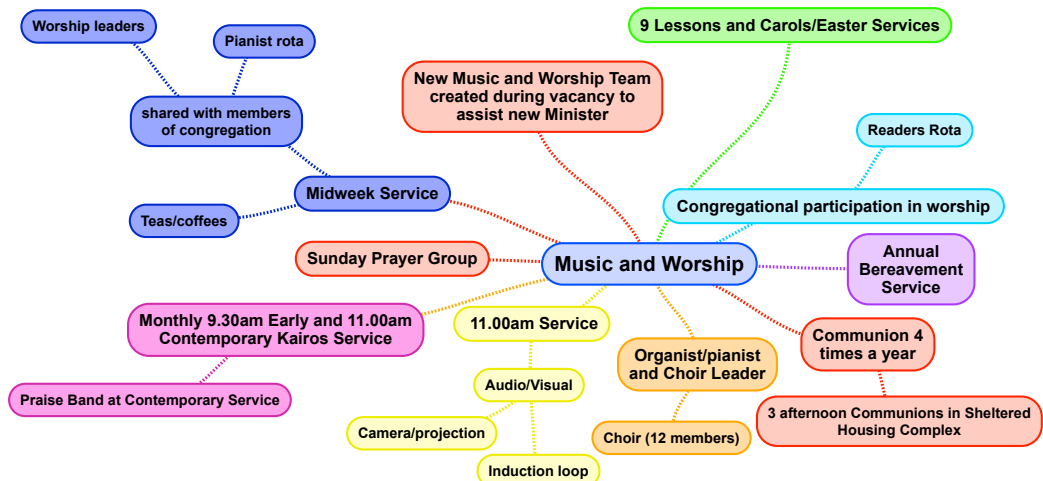
PARISH CHURCH GENERAL FUND BUDGET

		Budget for year to 31/12/20	Actual for year to 31/12/19
INCOME	£	£	£
Members	106,000		107,317
Tax Recovered	20,000	126,000	23,243
Other Income		30,880	24,930
Total		156,880	155,490

EXPENDITURE

Ministries & Mission Allocation	74,666		84,414
Presbytery Dues	4,644	79,310	4,739
Congregational Expenditure		80,850	71,525
Total Expenditure		160,160	160,678
Surplus/(Deficit)		(3,280)	(5,188)

4 WORSHIP



A fairly traditional worship service takes place at 11am every Sunday morning. (In the months of July and August, this begins at 10am.) Members of the congregation are regularly involved along with the Minister in this service, offering prayers, Bible readings and children's talks.

The average attendance at a Sunday service is fairly consistent at between 100 and 120.

From September to June, a short mid-week service takes place on Wednesdays at 11am, with a congregation of about a dozen.

This caters for those unable to attend on a Sunday and is a shorter, more intimate service. More modern forms of worship have been introduced in recent years:

A contemporary service, Kairos, takes place on the middle Sunday of the month from September until the end of June at 11am in the Carswell Centre, featuring food and group discussions. (This is preceded by a traditional service at 9.30am.) Messy Church is held in the Carswell Centre on a Friday evening about once every six weeks. It is focused on families and led by the Minister,

our Youth Worker and the Messy Church team, feeding young families spiritually and physically. Church Builders (Sunday School), start in the Church for the younger children who then move to the Carswell Centre for the rest of their activities. We have also run a creche for babies and toddlers in the past. Both Church Builders and the creche have had a relatively small number of users and more volunteers to run both are needed. There is a Prayer Group who meet in the Carswell Centre prior to the Sunday service, remembering

And at Easter, we celebrate the Joy of the Risen Christ with the Cross Flowering.

Communion takes place three times a year in the Church at 11am and also at our local sheltered housing complex - Montgomerie Court - on the same afternoon. (It's also held on Maundy Thursday evening.) Elders deliver invitations to the members of their district - we do not use communion cards.

We have a close relationship with St Bridget's Roman Catholic Church. Their congregation join us for Remembrance - the community War Memorial is incorporated into the Church wall - and various other activities throughout the year.

Music is an important part of our worship. We routinely sing from CH4, alternative hymns are also regularly used and we are exploring more contemporary songs.

Our Church choir leads the singing, with introits and anthems, and we have an experienced organist/choir leader at the helm.

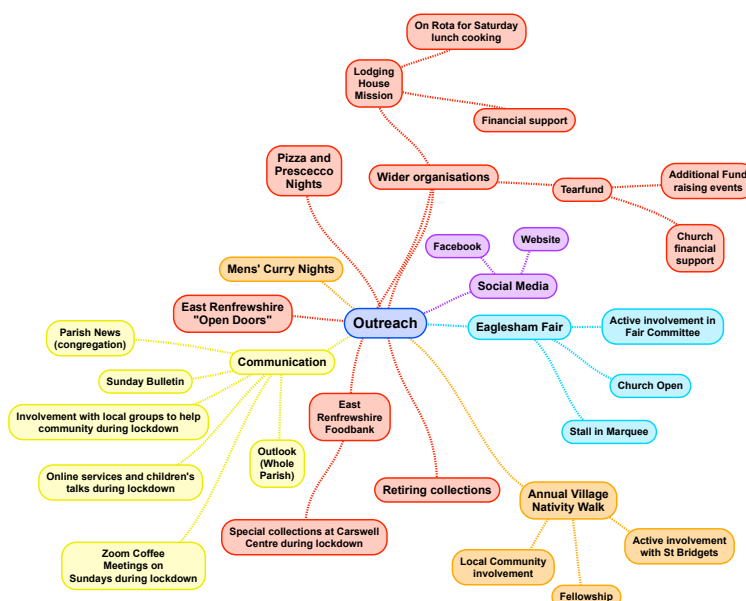
Our small praise orchestra/band leads our contemporary service.



The Sanctuary is beautifully decorated for Remembrance and Christmas services

OUTREACH

There are 50 elders in the Session meeting every two months at meetings chaired by the Minister and we operate under the unitary constitution. The Church membership is divided into districts and most elders have a district for which they are responsible. The Session works harmoniously, with the elders acting as a link between the Minister and the congregation. Most years, the Session holds an "away day" when more detailed discussion on things spiritual and secular take place. Responsibility for the different aspects of Church life is divided among several teams, with the intention being that members rotate through these teams, which also include non-elders. However, ultimate responsibility for decisions lies with the Session, not the teams. The teams are as follows:



8 EAGLESHAM PARISH CHURCH PROFILE

The Outreach Team engages with the wider community both locally and internationally to promote the Church and to try to draw non-Christians to faith. Locally, this involves publicising and helping to organise Church-led events and services – such as the Nativity Walk – as well as ensuring the Church is involved in external celebrations such as the Village Fair and the Doors Open weekend. Eaglesham Parish Church supports various organisations in the local area and within Glasgow. In particular, members provide physical and financial support to the Lodging House Mission in East Campbell Street, Glasgow. The Lodging House Mission is a charity dedicated to providing support to homeless, vulnerable and socially excluded people. Overseas, Eaglesham Parish Church is partnered with Tearfund's Partner Church programme. Eaglesham Parish Church –



Our Church backs Tearfund's work around the globe. Below, the Nativity Walk

including our youngsters – backs the project financially and in prayer. The Tearfund scheme directs support to wherever the need is greatest globally and works closely with the local churches and provides a moral voice for God. The charity sends updates back to Eaglesham giving an insight into the lives we are helping.



PASTORAL CARE AND FELLOWSHIP



This team aims to help the Minister and elders in caring for people in the congregation and parish, and seeks opportunities to bring members of the congregation together. Activities include the provision of transport for hospital visits, home visits and flower distribution after each Sunday service, at Christmas and after Harvest Thanksgiving. A social evening takes place each year to thank those who give of

their time and talents to support the work of the Church. The group includes the Church's safeguarding co-ordinator. A walking group meets twice monthly, visits are arranged to museums or other places of interest and the group staffs a rota to provide tea and coffee after Sunday and Wednesday services. In the past, there have been Manse lunches to welcome new members.

The team looks forward to updating the Welcome Booklet and website once we have a new Minister.

Visiting

There is a significant elderly population in the Parish – many actively involved in Church and other community activities. There is sheltered accommodation in the village. Some parishioners live in nearby residential homes outwith the Parish and retain an interest in the life of the village. They are visited regularly by the Minister. Visits are made to in-patients at local East Kilbride and Glasgow hospitals.

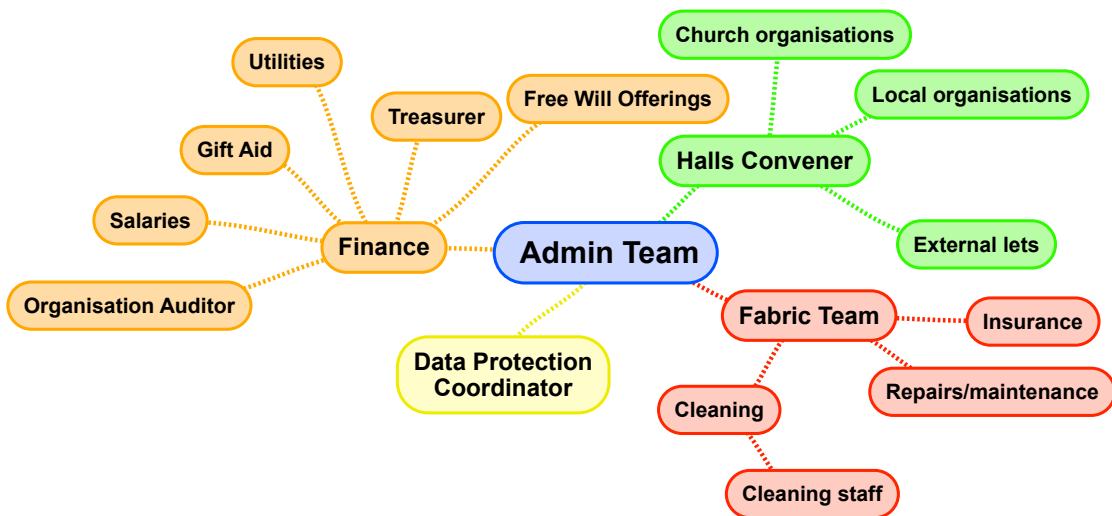
Kirk Carers

The group exists to organise lifts for those who require transportation to hospital or other appointments. A system of lifts to Church for those without cars is also in operation. And the group can offer help in other areas, for example form-filling.

The walking group, who get out and about twice a month, is just one of the activities overseen by the Pastoral Care and Fellowship Team



ADMIN



This team consists of 15 members and is responsible for monitoring all financial, fabric and administrative matters. Meetings take place nine times a year and a report is given to each Session meeting, when policy recommendations can be made and advice received. The four main areas of responsibility are:

Finance

Budgeting, preparation of accounts, financial stewardship, arranging an organisation auditor, promoting awareness of the financial situation of the Church and recommending how to fund special projects.

Fabric

Maintenance and renewal of fabric as necessary, proactive programme

of maintenance, ensuring adequate insurances and compliance with Health and Safety Regulations.

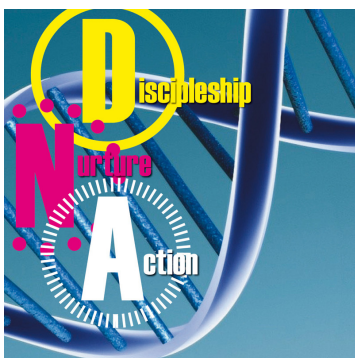
Halls Commercial Lets

Setting conditions of let, reviewing charges. Liaison with hall users.

Administration

Administration: Duty rota, data protection procedures, staff contracts and salaries.

FAITH DEVELOPMENT



The DNA groups are proving popular

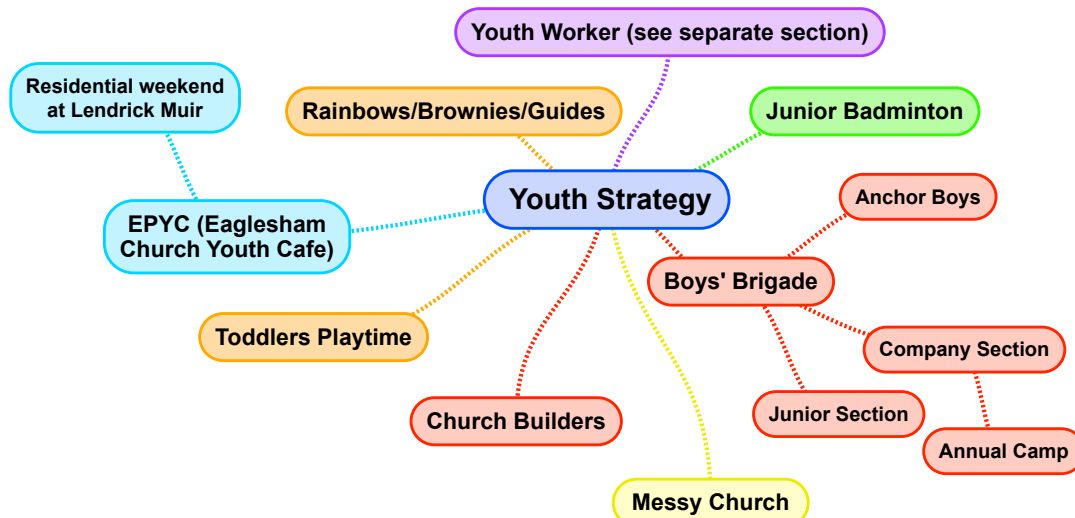
This group organises events that will raise the spiritual consciousness of the congregation. Small DNA (Discipleship, Nurture and Action) groups of four to six people meet during Lent and in the autumn, encouraging fellowship and using Bible study guides to focus on current issues and pray together. Zoom meetings are planned for the future DNA sessions. The team also runs short series such as The Bible Course and The God Question. It is responsible for the church library and resources such as

booklets encouraging faith and prayer. Faith Development provides a short prayer each week for the church bulletin or website. A monthly prayer sheet is emailed to a group who participate in responding to prayer requests. A Sunday morning meeting responds to prayer requests made online or from cards provided in church. The team holds interactive prayer and reflection mornings, while an Easter Reflective Walk uses scenes from the Biblical events to provide opportunities to pray.

6 The youth of
the community
are our future...
and they are
important to the
Church of today



YOUTH STRATEGY



The Summer Holiday Club has been a big hit with children in the past... and the adult volunteers seem to quite enjoy it, too

The long-term aim of the team is to encourage young people to participate in Church life both now and when they mature into young adults and beyond.

This group is in charge of the section of the community that is our future. The Youth Strategy Team aims to provide support and encouragement to the various youth organisations within our Church.

These comprise the uniformed organisations of the Boys' Brigade, Brownies and Guides, our Church Builders (Sunday School), Eaglesham Parish Youth Cafe (EPYC), which is similar to a youth fellowship group, Youth Badminton, Messy Church and the Summer Holiday Club.

As a Church, we have funded a



EPYC leaders and youngsters show off new hoodies at a pre-Christmas supper

12 EAGLESHAM PARISH CHURCH PROFILE



Youth Worker who has brought an energy and engagement with the young people in the community for more than a decade. Our Youth Worker has been very much involved with all of these groups and he has also had a significant presence at our local primary and secondary schools. The team aims to support the Youth Worker and ensure that all of our organisations have the resources necessary, both staffing and financially, to fulfil their objectives. EPYC has become a staple of the youth work in Eaglesham. It's a youth group that meets on Sunday evenings, bringing the message of the Bible to young people through a mix of games, activities, discussion, videos, prayer and Bible study. We have a very active and well-supported Boys Brigade, with a regular camp to Whiting Bay, on Arran, that has amazingly seen more than 60 years of loyal visits.

Education

The Youth Worker has been in

charge of the chaplaincy to Eaglesham Primary School and Nursery. There are about 370 pupils in the school and 100 children in the nursery.

This work involves numerous class visits and assemblies throughout the year covering a wide range of Christian themes.

JAFFA - Jesus A Friend For All - is our Primary School ministry, which takes place every week on Friday lunchtimes during term times.

Our Youth Worker leads JAFFA for 25-plus children in P6 and P7 using games, activities and a Bible passage to show what Christianity means for their lives.

Services are held in the Church at the end of each term.

There is another school ministry to Mearns Castle High School, led by Maxwell Mearns Minister Scott Kirkland, who is assisted by his Youth Worker and ours.

This includes various assemblies, services and running a CU group meeting each Thursday at lunchtime during term-time.

Mearns Castle High School and, right, Eaglesham Primary School

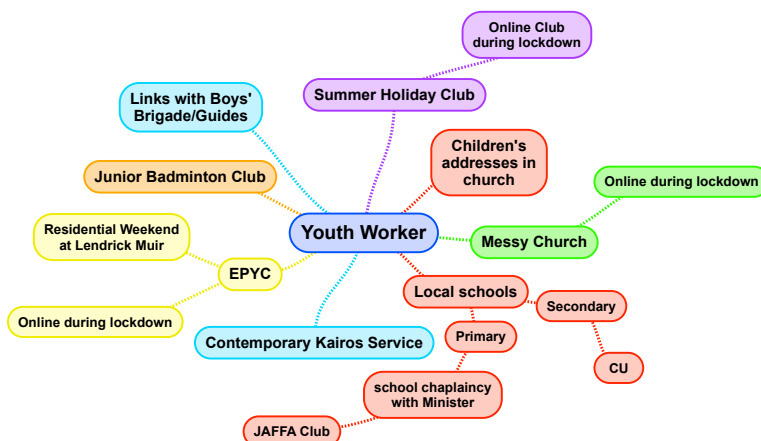


YOUTH WORKER

Our Youth Worker post is currently vacant but the congregation is very much committed to having the role filled. This is a contracted post for 35 hours a week with funding in place for the job going forward.

This work is supported and given prominence due to the importance that we place on the youth of the community and the belief that they are our future.

The role of the Youth Worker is referred to in various parts of the profile but, to emphasise the importance of this work, there is a dedicated "map" for Youth. References are made in the previous Youth Strategy section but this pulls it all together!



CHURCH LETS AND COMMUNITY GROUPS

Church Halls Lets to Organisations

Aerobics
Badminton Club
Boys' Brigade, Guides and Brownies
Eaglesham Community Club
Kids Time Out
Yoga

Community Organisations

Action Research
Age Concern Eastwood
Angling Association
Bowling Club
Community Council
Curling Club
Fair Committee

Football Club
History Society
Karen Watson School of Dance
Katsura Karate Club
Music & Drama Group
Parent & Toddler Group
Senior Citizens Club
TREE - The Regeneration of Eaglesham's Environment

6 21ST CENTURY BUILDINGS FIT FOR OUR NEW MINISTER



This section focuses on the buildings that support us in our mission and a view of our requirements for our next minister.

We have rationalised our estate by disposing of the former Mid Halls and the old Telephone Exchange and carried out significant developments to the former Carswell Church, which is now known as the Carswell Centre. All of this work was completed before our last ministry but it is worth emphasising that the underlying belief was that we needed buildings that were fit for purpose in the 21st century and that would meet the needs of both our church and the community.

We believe the Carswell Centre puts the church at the heart of the community, with its prominent position in the village and its flexible, adaptable, disabled friendly and attractive space.

The building was developed to help draw people to a living and relevant Christian faith. It aims to create an open and welcoming space for many within a village and conurbation that lacks many public amenities.

It provides in addition to a church office and vestry accommodation for worship, social, business, youth and recreational purposes. There is a dedicated space for our young people, modern kitchens and a lift. Already we have hosted weddings, baptism celebrations as well as group activities. Messy Church and Kairos are hosted in the upper area. The Centre also houses the six renowned Eaglesham statues that form part of the community history and in return receive an income from East Renfrewshire Council.



The large upper hall is used for modern worship and activities, while the ground-floor hub hosts after-church refreshments among other things

The development is without debt, having been funded by the congregation, fundraising and grants. We worked on the principle that the project would not proceed without the assurance of funds. Although this is now in the past, it is worthy of mention as it reflects very much on a committed and dedicated community believing in the message of God's love for us. Since the Centre has been completed, there has been development in its use. But we believe that our next Minister has the opportunity to develop its use further and cater even more for the congregation and the community by placing the Church firmly at the heart of life in Eaglesham.

Our next minister

It is with this background of our development, that we wish to attract our next minister who will be:

- Enthusiastic and committed to

working within the community to bring God's love to the congregation and wider community;

- A leader in the widest sense, with good organisational skills, who will work to inspire, challenge, encourage us in our Christian discipleship and witness and broaden the Church's appeal;
- Keen to stimulate new life and energy in the congregation and help grow the congregation by embracing fresh ideas for worship;
- Willing to work with our Youth worker (when appointed with the new minister's involvement) to continue the growth of our work with children and families, as well as engaging with the local schools;
- Innovative and willing to use modern technology to build the reach of God's word;
- Caring and empathetic in pastoral care;
- Able to preach in a way that is engaging, sound, Biblical and well applied to everyday life.

14 EAGLESHAM PARISH CHURCH PROFILE



The modernised Carswell Centre now has all the necessary facilities for a variety of social gatherings and community groups



The main room and kitchen of the Carswell Halls - before the building work that totally transformed it for 21st century use



Members of the Kirk Session inspect the new first floor and check out developments on the ground floor during building work



Rain didn't dampen people's spirits during a family fun day held in the village to raise funds for the Carswell project

7 LOCKDOWN AND BEYOND...

The Covid-19 crisis has undoubtedly created many challenges for our Church but it has also provided many opportunities for it to reach out to a far wider audience. Our locum minister and Youth Worker seized the chance to produce video sermons and talks

that were posted both on our website and Facebook page – and they have been watched by far greater numbers than would traditionally attend Church. Zoom coffee mornings and Session meetings have also become part of our parish life. As a result of all of

this, there is now an ambition to record and stream services. A tech team is being established to ascertain what new equipment is needed and to liaise with neighbouring churches to learn lessons about how they have grown their digital presence.



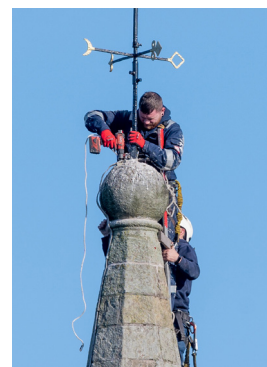
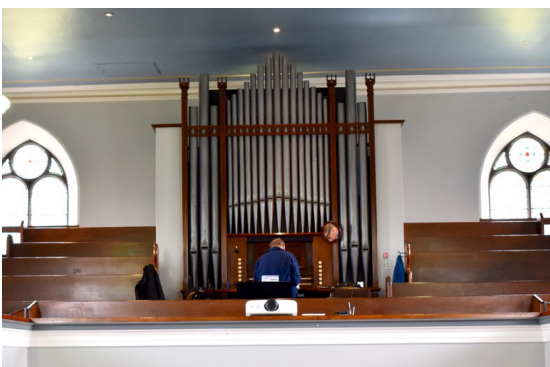
Eaglesham Guild are very active in both Church life and the wider community, with a number of fundraising initiatives

8 THE VACANCY

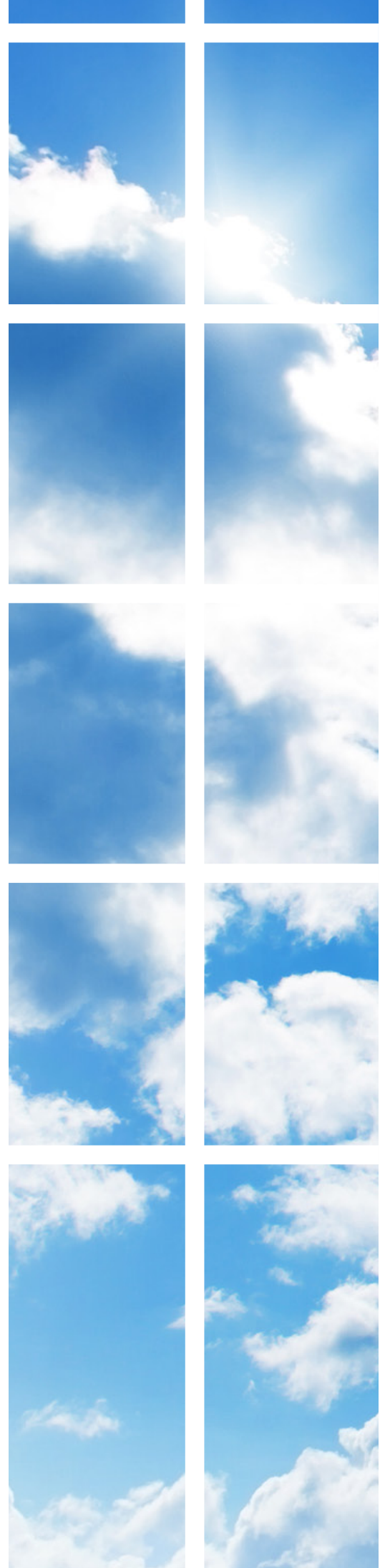
The vacancy has arisen because our previous minister moved to another charge. But we hope that, after reading our profile, you can sense the strengths and areas of development for our Church, and what we consider to be our present and future challenges. Our office bearers and congregation are great team players who will offer

excellent support, friendship and encouragement to their new Minister. Do you see yourself as part of this vision? If so, we look forward to hearing from you. Eaglesham is an unrestricted charge. The Kirk Session of Eaglesham Parish Church has voted by a majority for departure from the

Church's practice in relation to human sexuality. Applications, in writing with CV and the names of two referees, should be made to the Clerk to the Nominating Committee. You will find their contact details along with those of the interim moderator on our website: www.eagleshamparishchurch.co.uk/



Church members care passionately about maintaining the buildings – the organ and steeple have been recently overhauled



Put yourself at the heart and
soul of our community

EAGLESHAMPARISHCHURCH
EAGLESHAMPARISHCHURCH

Parish Profile: published by Eaglesham Parish Church, Scottish Charity Number SC006377, © EPC2020